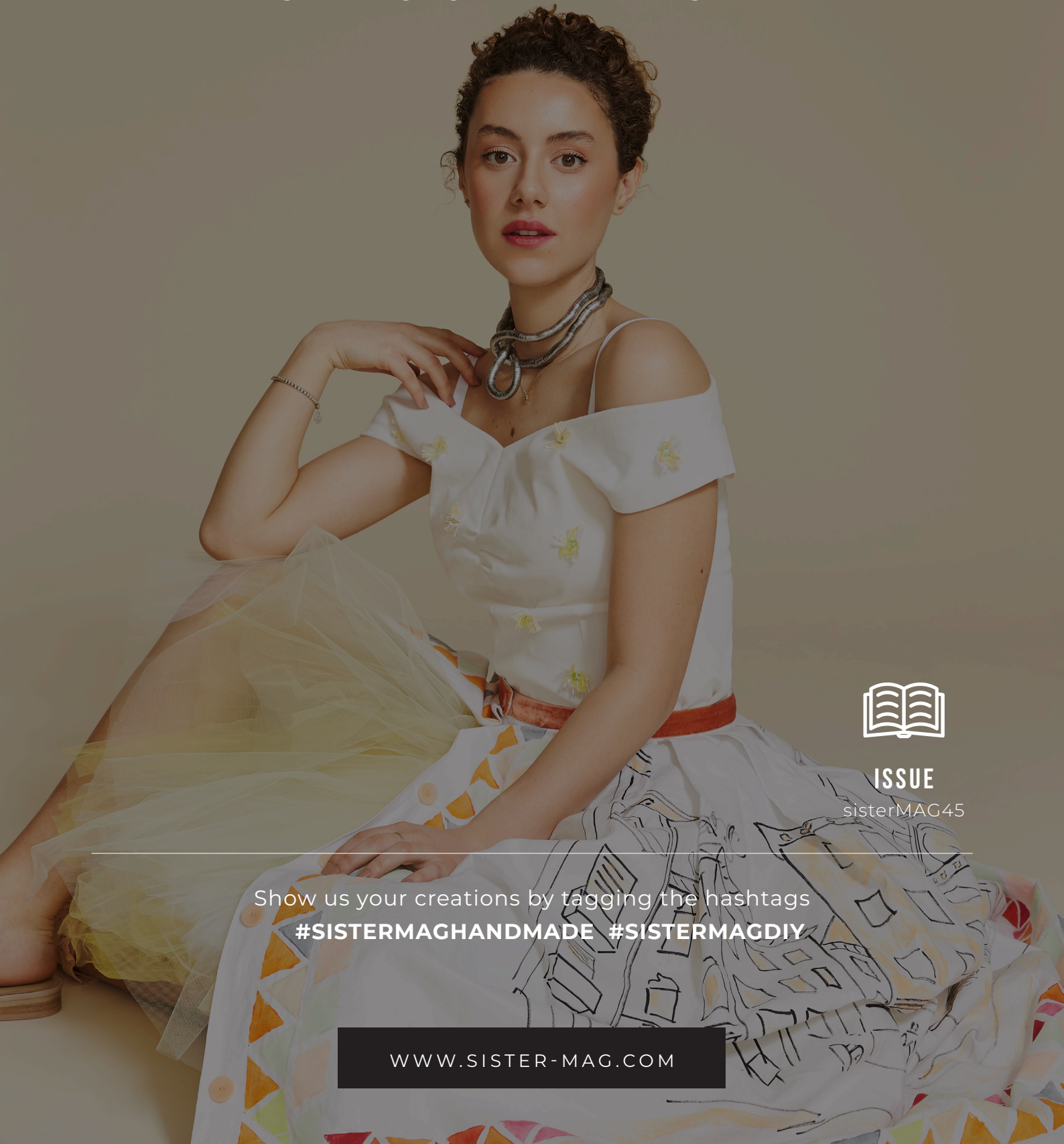




PATTERN

# BUTTONED-DOWN POTATO STAMPED SKIRT



ISSUE

sisterMAG45

Show us your creations by tagging the hashtags  
**#SISTERMAGHANDMADE #SISTERMAGDIY**

[WWW.SISTER-MAG.COM](http://WWW.SISTER-MAG.COM)



# BUTTONED-DOWN POTATO STAMPED SKIRT

## MATERIALS

- ❑ 2,70 heavy linen (e.g. from Pavani <http://bit.ly/2DfRoPC>)
- ❑ Different textile colours. We used the Marabu Textil colours
- ❑ Textile pen in black
- ❑ Paintbrushes
- ❑ Potatoes
- ❑ Velvet ribbon in desired colour and width (we used 78 cm of 2,5 cm wide orange velvet ribbon for a 71cm waist)
- ❑ Filler to iron onto the waistband (78cm x 10 cm)
- ❑ 5 buttons + 1 special button for the waistband



**SIZE**  
36/38



**ISSUE**  
sisterMAG45



**MORE  
PATTERNS**

## (1) CUTTING AND PREPARATIONS

1. Cut the fabric with a width of 2,60m + 5+5cm add-on (front seam to front seam) and the desired length (waistband to bottom seam) – in our case 77 cm
2. Using our chosen material of heavy linen, the bottom seam does not have to be sewn (selvedge). If you are using a different fabric, please add 5cm for the seam in length.
3. Stitch the fabric on the left and right using the zig-zag setting
4. Iron over 5 cm of fabric on the left and right for the button holes
5. For the inner print, print the template on 22 DIN-A4 pages. Glue the edges together and trace with an ironing pen.
6. Put the template onto the fabric upside down. Place in the centre (be careful to leave the same amount of space on both sides for the edge of your stamp.)
7. Consulting your trace lines, iron on the picture (usually with high temperature and without steam). You'll colour it in later.

## VIDEO TUTORIAL

## (2) STAMPING

8. Start stamping: you can easily choose your own pattern. The pattern for our stamps can be found with these instructions.
9. Print out the stamp shapes and cut them out. Place them on half a potato and cut the edges about 5mm deep. Cut off the outer parts to reveal a raised shape.
10. Choose your liquid textile colours and apply them to the top of the potato stamp using a paintbrush. Start stamping!
11. When your done with the edges, let everything dry. Continue with the shapes in the centre.

## (3) PAINTING THE INNER DESIGN

12. Trace the cityscape with a textile pen. Choose a pen that won't bleed into your fabric – best to try it out first.
13. Use black or a colour of your choice to trace all of the lines. Then add highlights with a different colour using a paintbrush (e.g. windows..)
14. Let everything dry for 24 hours
15. Iron the colours into the fabric to fixate them according to the instructions on the package.

**(4) SEWING THE SKIRT**

16. First up, lay the pleats. The calculations for your length can be found in the information box on the right.
17. Draw on the pleats and fix every one with a pin before sewing them (about 1cm away from the edge)
18. Continue with every pleat.

**CALCULATING THE PLEAT SIZES**

Our skirt's pleats can be as wide or narrow as you want. We used the following calculations for our cover skirt

**waist of our model = 71 cm**

Add-on for comfort = 2 cm --> 73 cm is what the folded fabric should be in diameter at the end!

We want to use 10 pleats for our skirt (10 is chosen randomly, you could also make more or less pleats). At the two sides we will leave 10 cm free for the stamp printing and the buttons

$$73 \text{ cm} - (10+10) \text{ cm} = 53 \text{ cm}$$

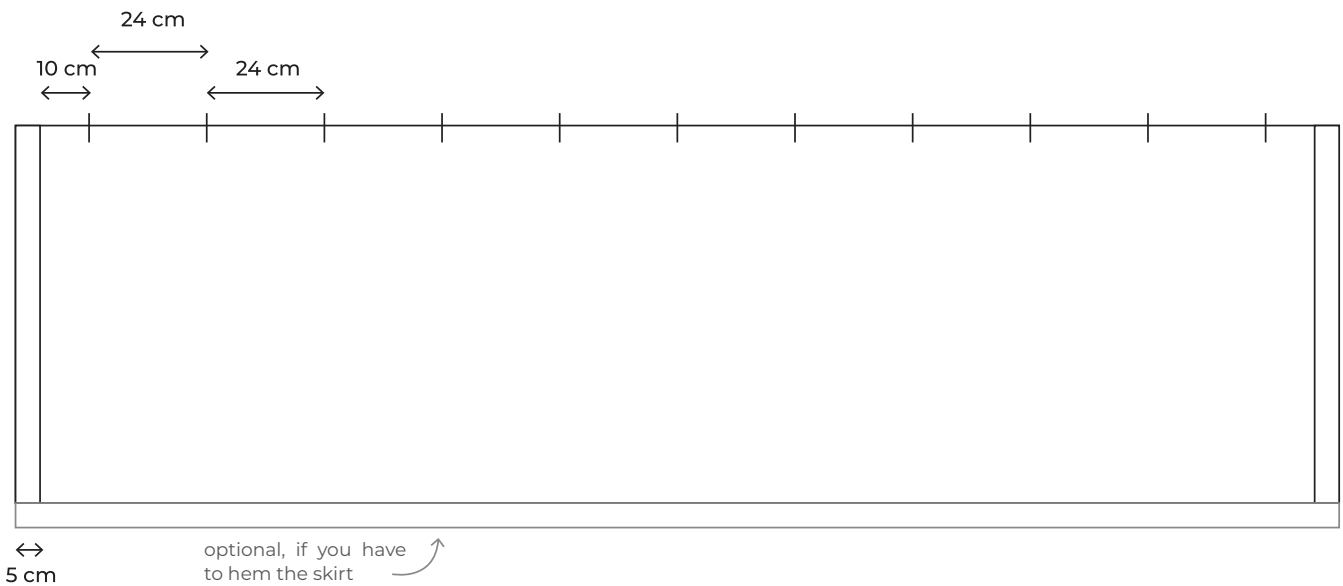
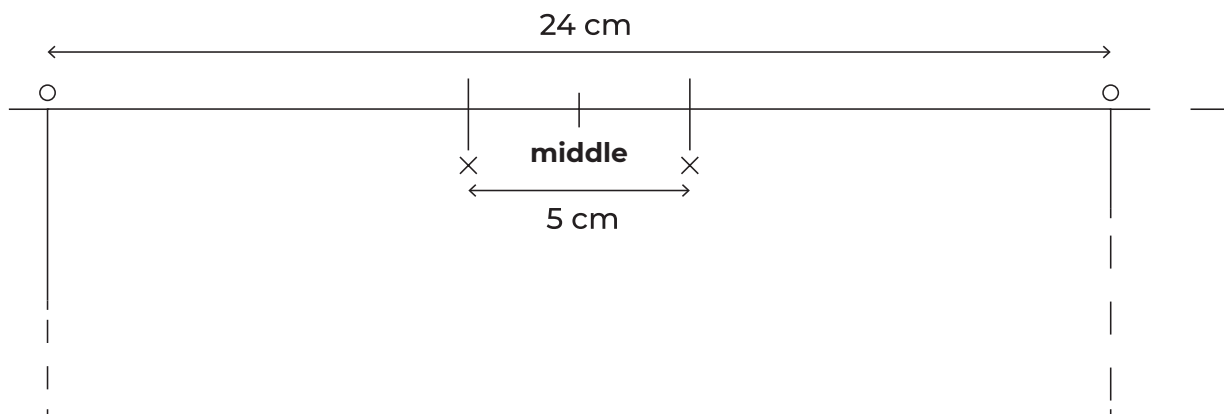
$$53 \text{ cm} / 10 \text{ pleats} = \mathbf{5,3 \text{ cm (rounding up to 5cm)}}$$

Our fabric which we'll put in pleats is 2,40 cm – BECAUSE

2,70 m original fabric - (5+5) cm fold - (10 + 10) for stamping at the sides = 2,40 m

$$2,40 \text{ m} / 10 \text{ pleats} = \mathbf{24 \text{ cm}}$$

which means: 24 cm are divided in the middle (=12 cm marker), afterwards you'll mark 2.5 cm to the left and right (= 5 cm fold width, which you'll see later (see sketch B))

**PLEATS ON THE LENGTH OF THE MATERIAL****THE SINGLE PLEAT (B)**



19. For the waistband, cut a velvet ribbon the length of your waistband (Calculation: waist width + 2 cm addition + 2 cm seam allowance + 3cm underlap).
20. Cut your waistband from the skirt fabric – size of the velvet ribbon + 1,5 cm seam allowance around the edges
21. Iron the inlay / filling onto the waistband (skirt fabric).
22. Now sew the velvet ribbon with the shorter side (right on right) along its selvedge onto the skirt fabric that has been fixed with the filling.
23. Sew the waistband onto the top edge of the skirt (left on left).
24. Iron to the top and flip the velvet ribbon to the front. Invisibly stitch it onto the front by hand.
25. Fold over the ribbon by the edges and invisibly sew them on by hand using small stitches.

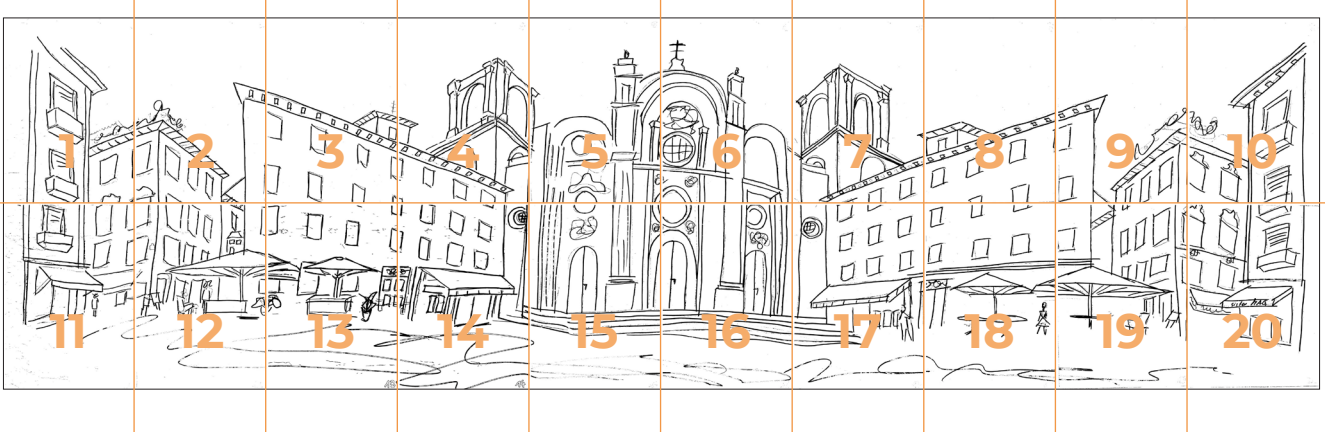


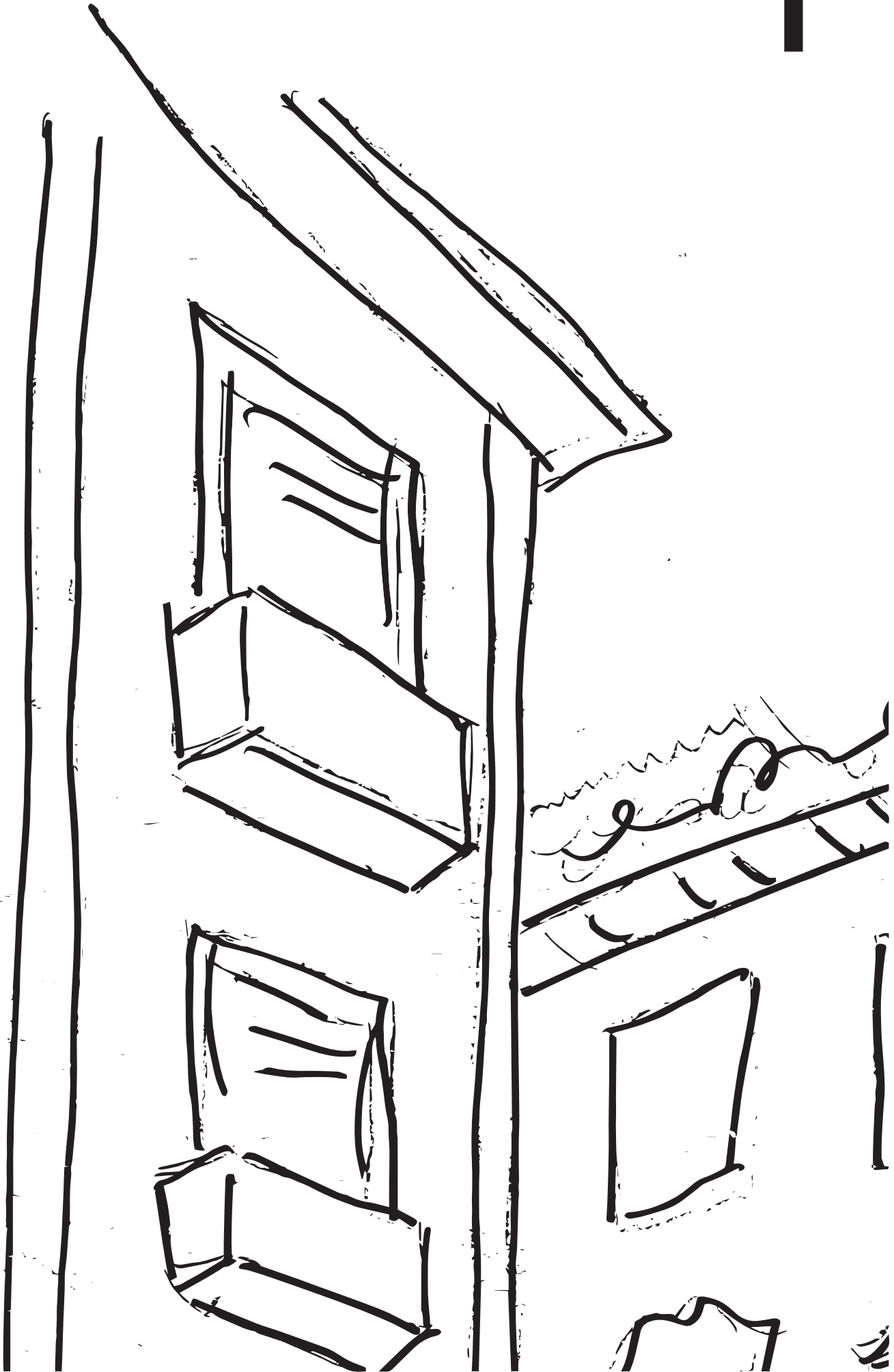
# PATTERN OVERVIEW

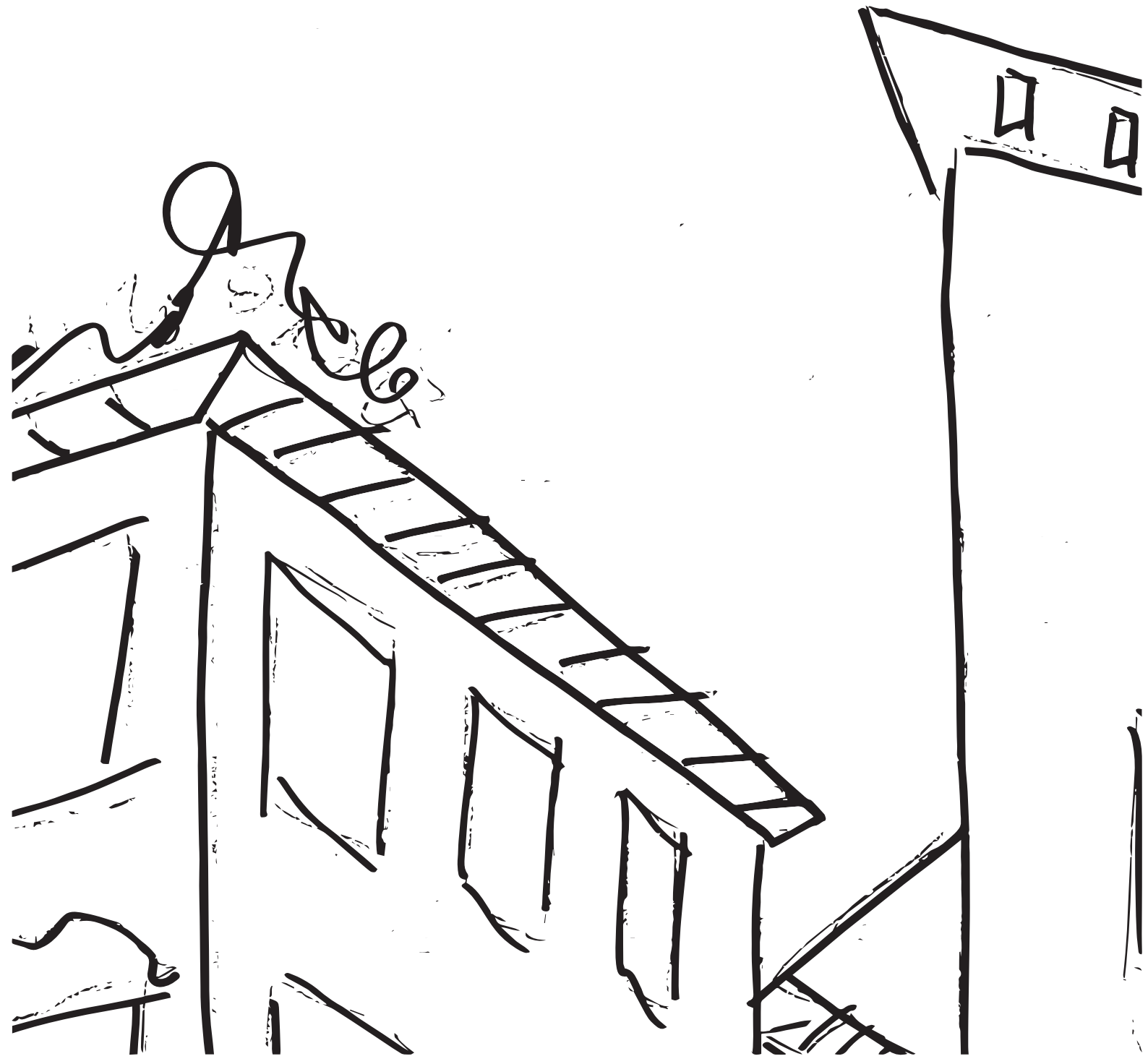


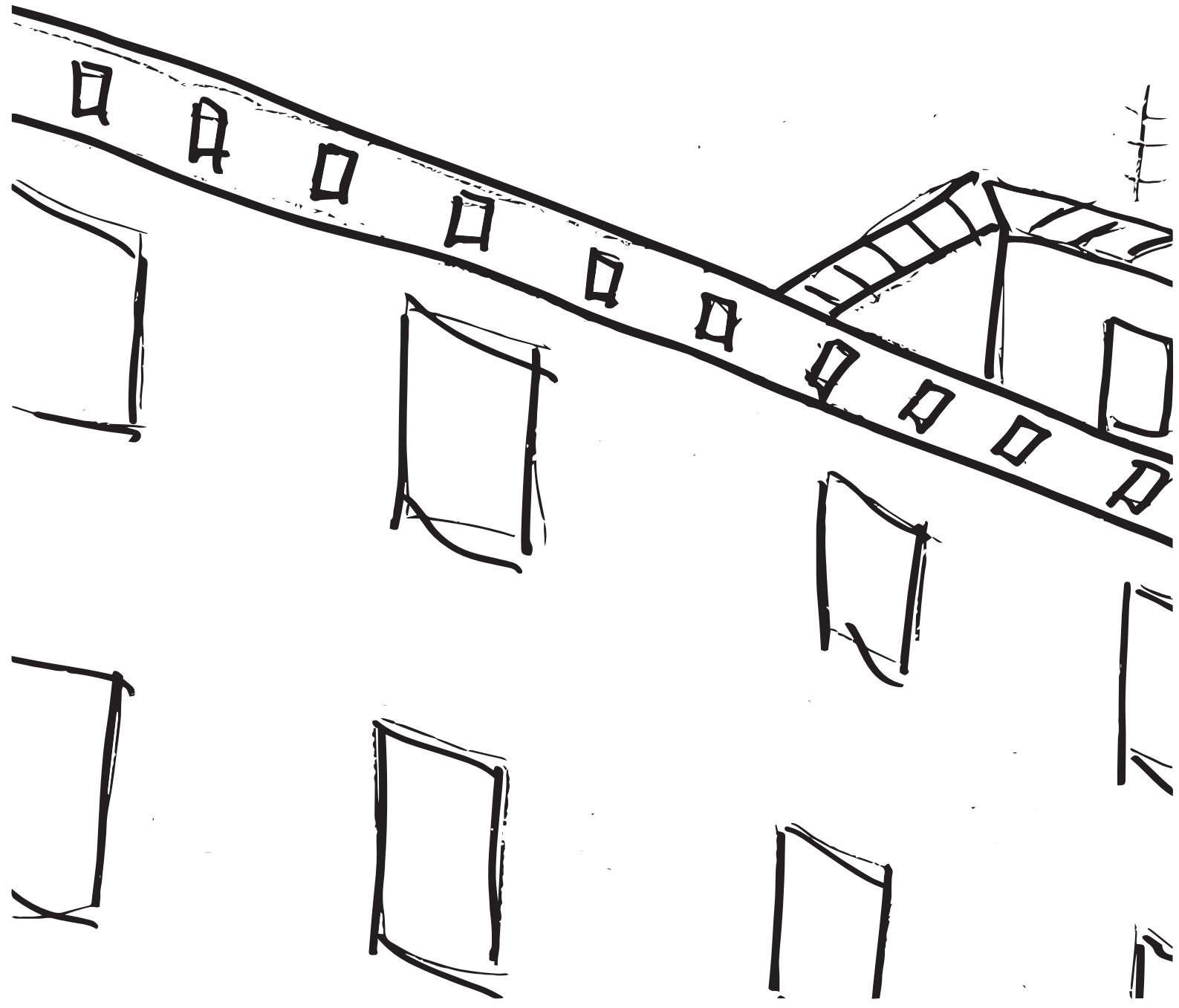
**MORE  
PATTERNS**

Lochen

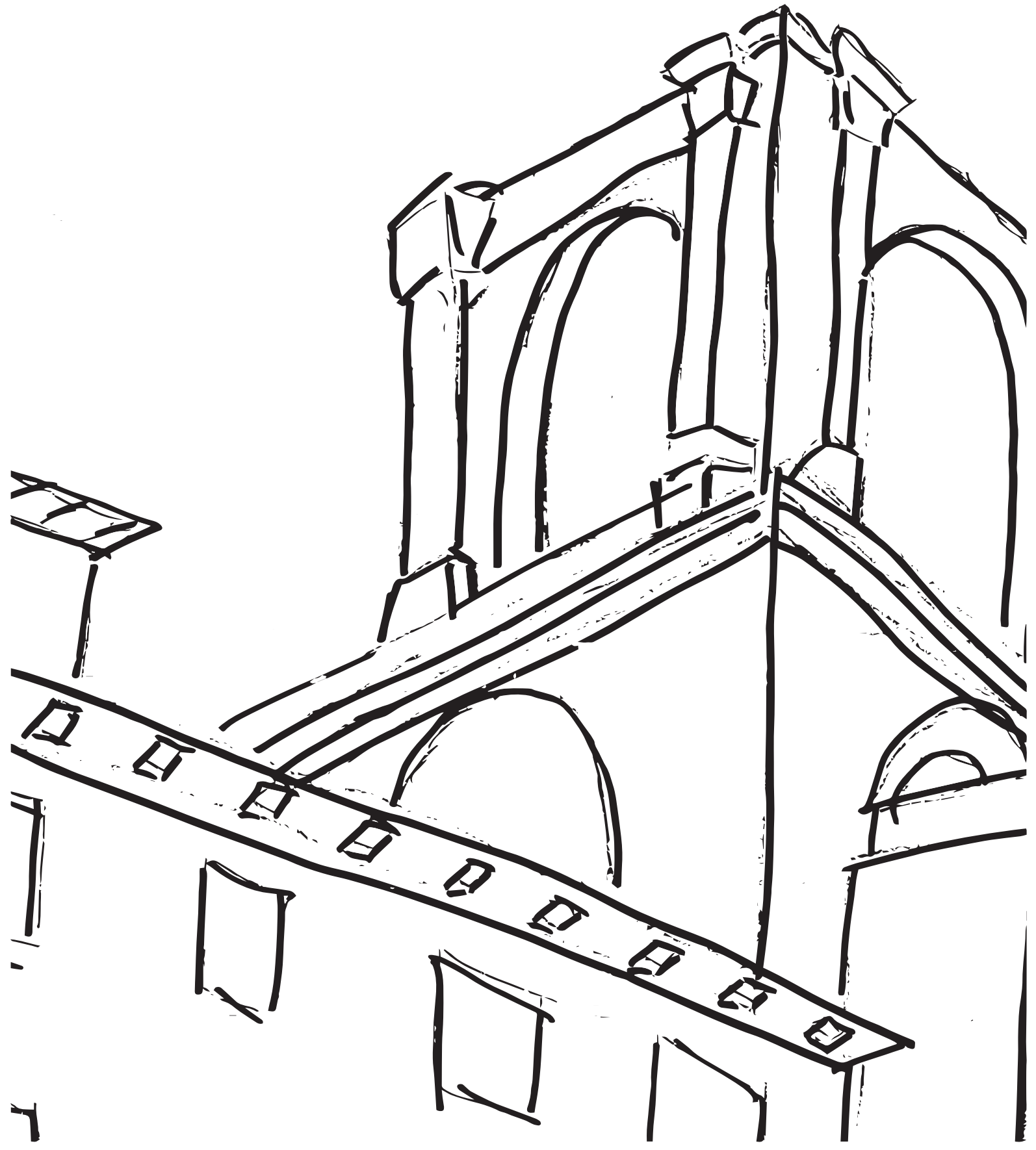




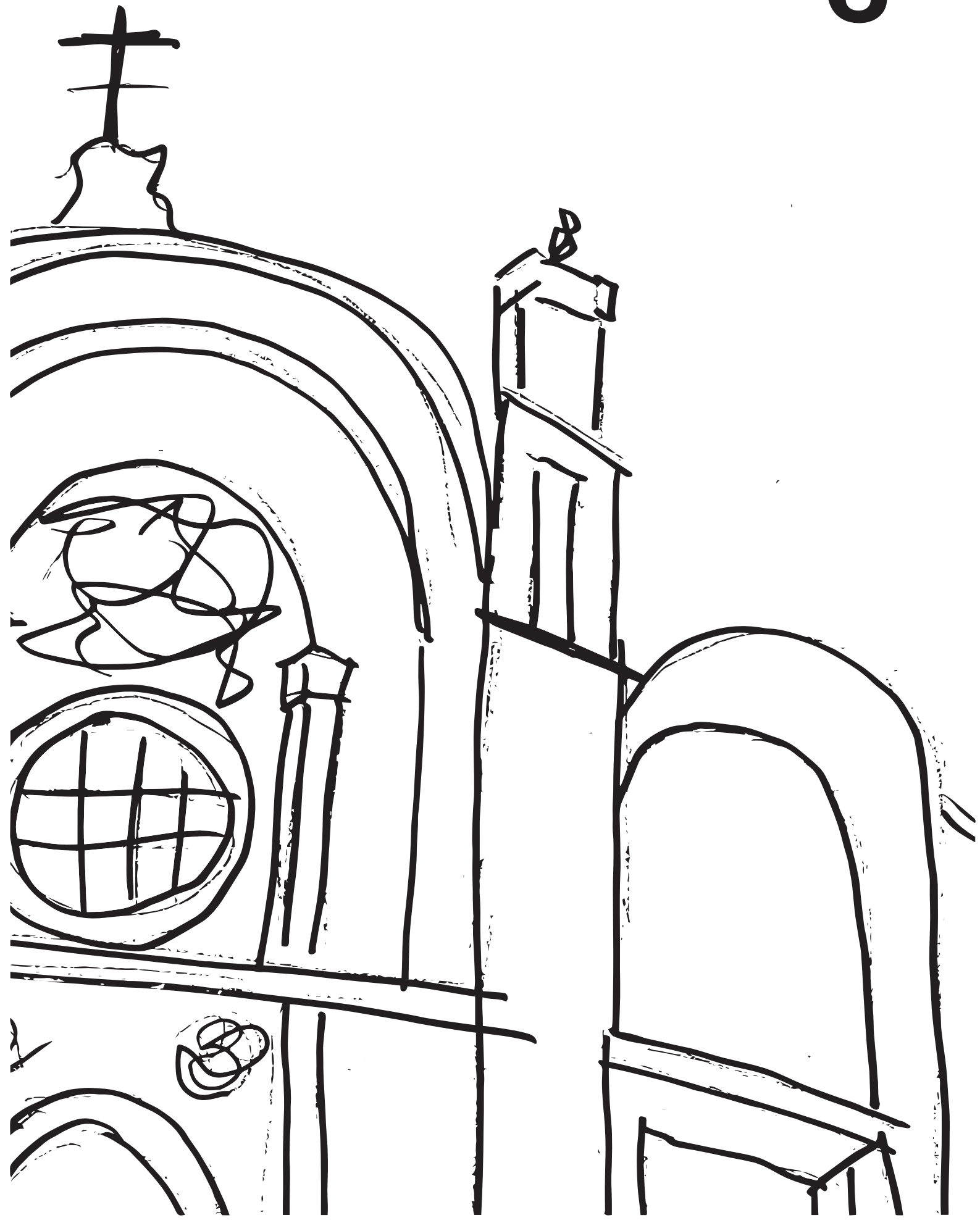


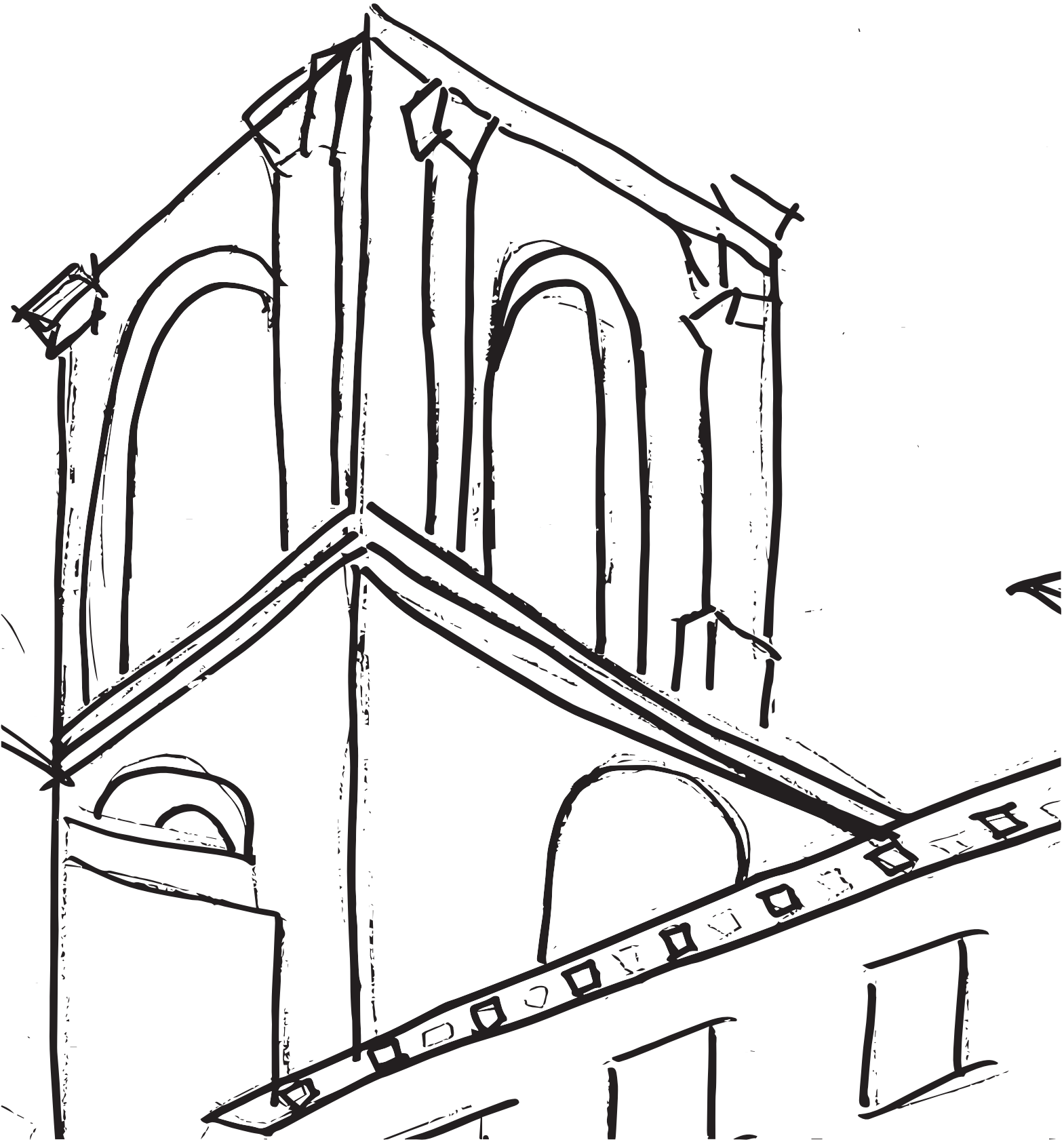


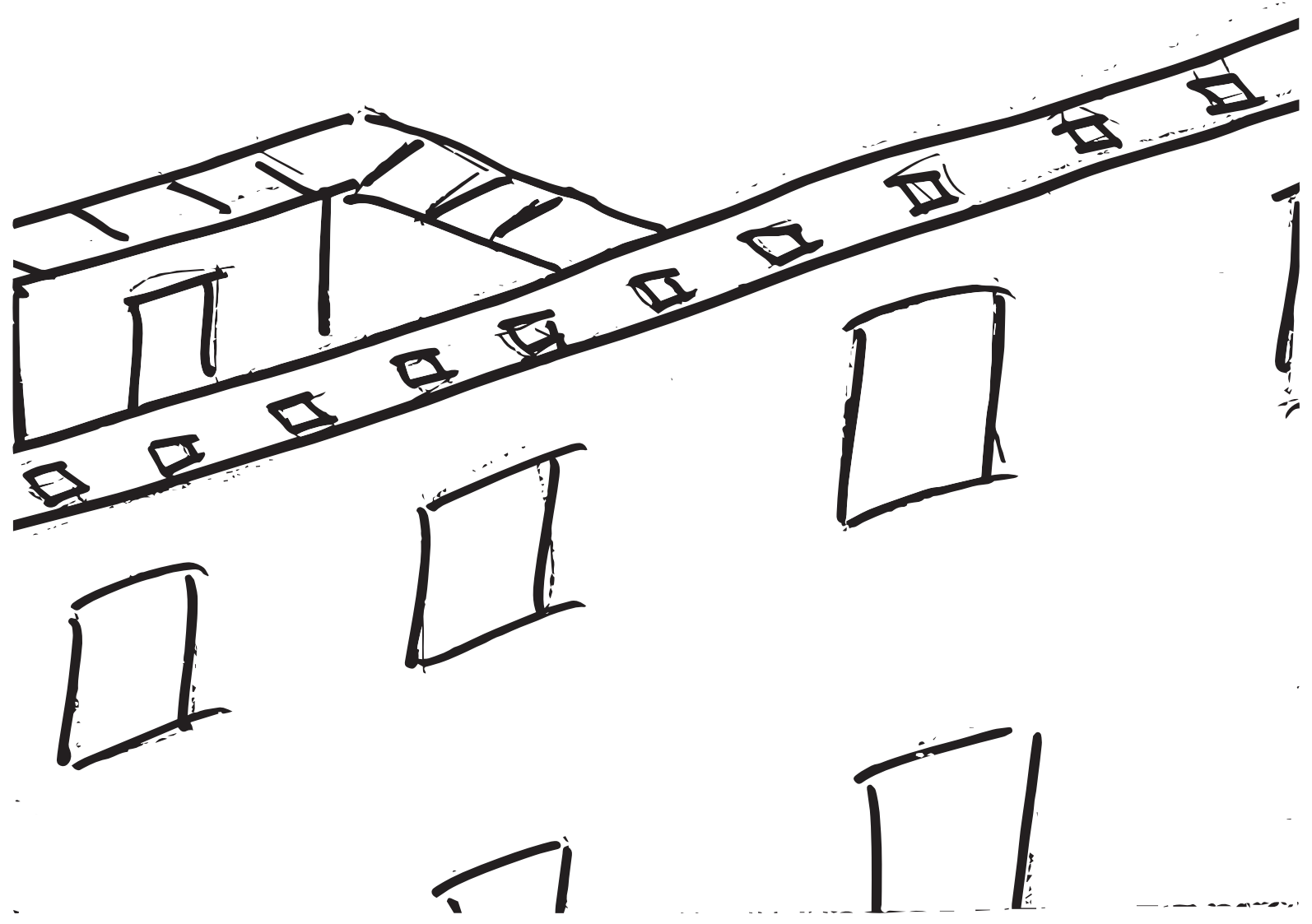




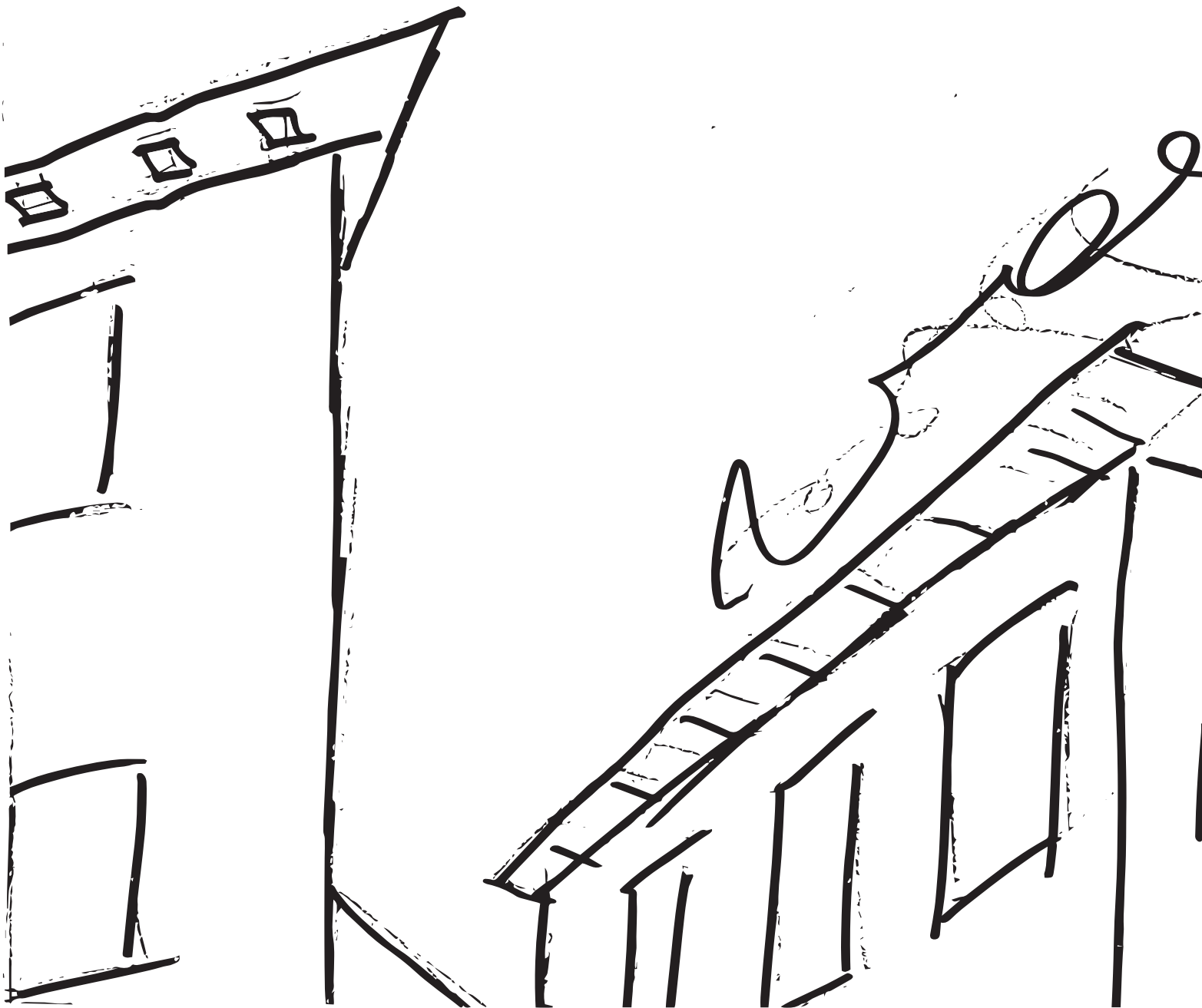




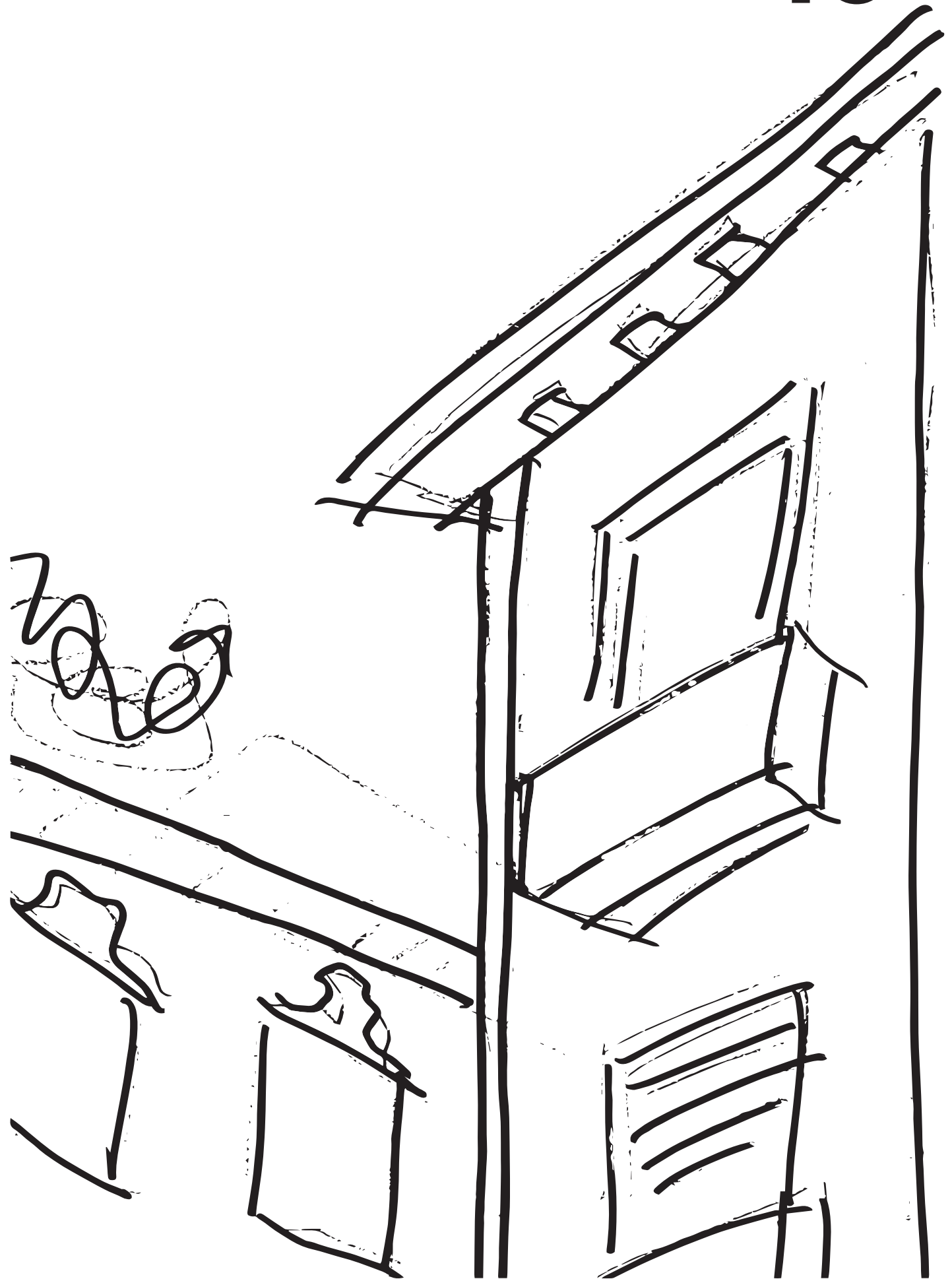


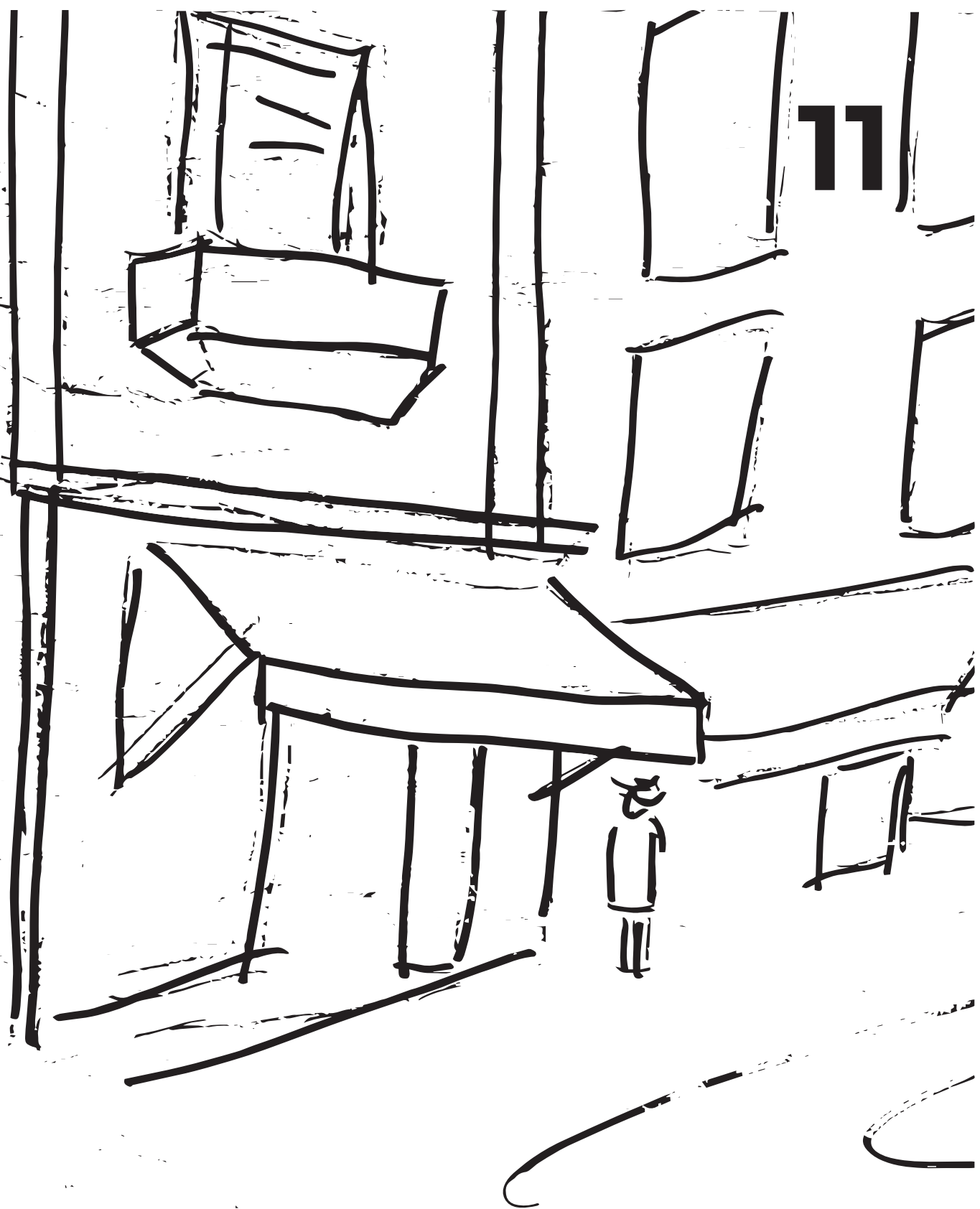






10







13

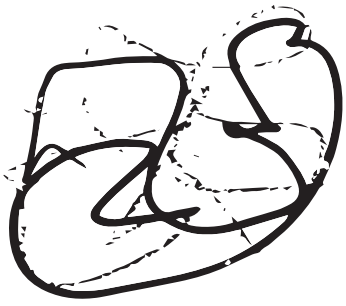


13'





15











19



20

sister MAG 1

run

