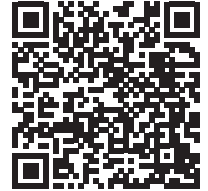


## TUTORIAL



TITEL

### SATIN-TRIMMED PINK FLEECE DRESS

FROM THE FEATURE

Fashion shooting jersey

SIZE

UK22/US26/EU54

SISTERMAG

N°34

### MATERIALS

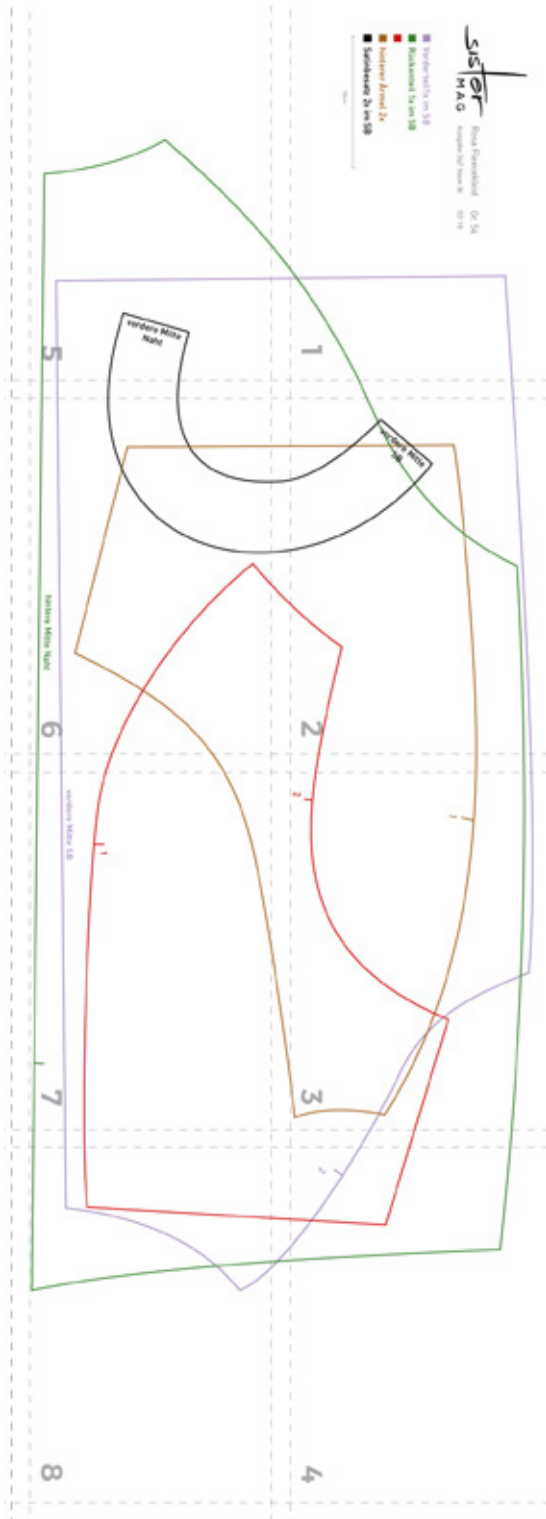
- ❑ 1.3 yd
- ❑ powder pink
- ❑ cotton fleece  
<http://bit.ly/2Em179p>
- ❑ 12" cuffing jersey  
<http://bit.ly/2E4ESla>

### HOW-TO

1. Sew front sleeves to front
2. Sew back sleeves to back
3. Sew up back seam to mark
4. Close side and shoulder seams
5. Cut a 47 x 7.9" piece of cuffing, double the material and turn over narrow sides, iron
6. Sew cuffing to lower edge
7. Cut two 14.5 x 8" pieces of cuffing and sew together on arrow sides, double the material and sew to lower sleeve edges
8. Cut satin trim and iron on lining
9. Close back seams and sew up neckline edges with right sides facing
10. Turn inside out and iron
11. Turn over neckline edge with trimming
12. Finish inner trimming by hand



## PATTERN-OVERVIEW



- Frontpanel 1x in SB
- Backpanel 1x in SB
- Frontsleeve 2x
- Backsleeve 2x
- Neckline 2x in SB

10cm

# Sister

M A G

Rosa Fleecekleid  
Ausgabe 34// Issue 34

Gr. 54

02-18

■ Vorderteil 1x im SB

■ Rückenteil 1x im SB

■ vorderer Ärmel 2x

■ hinterer Ärmel 2x

■ Satinbesatz 2x im SB

10cm

1



vordere Mitte  
SB

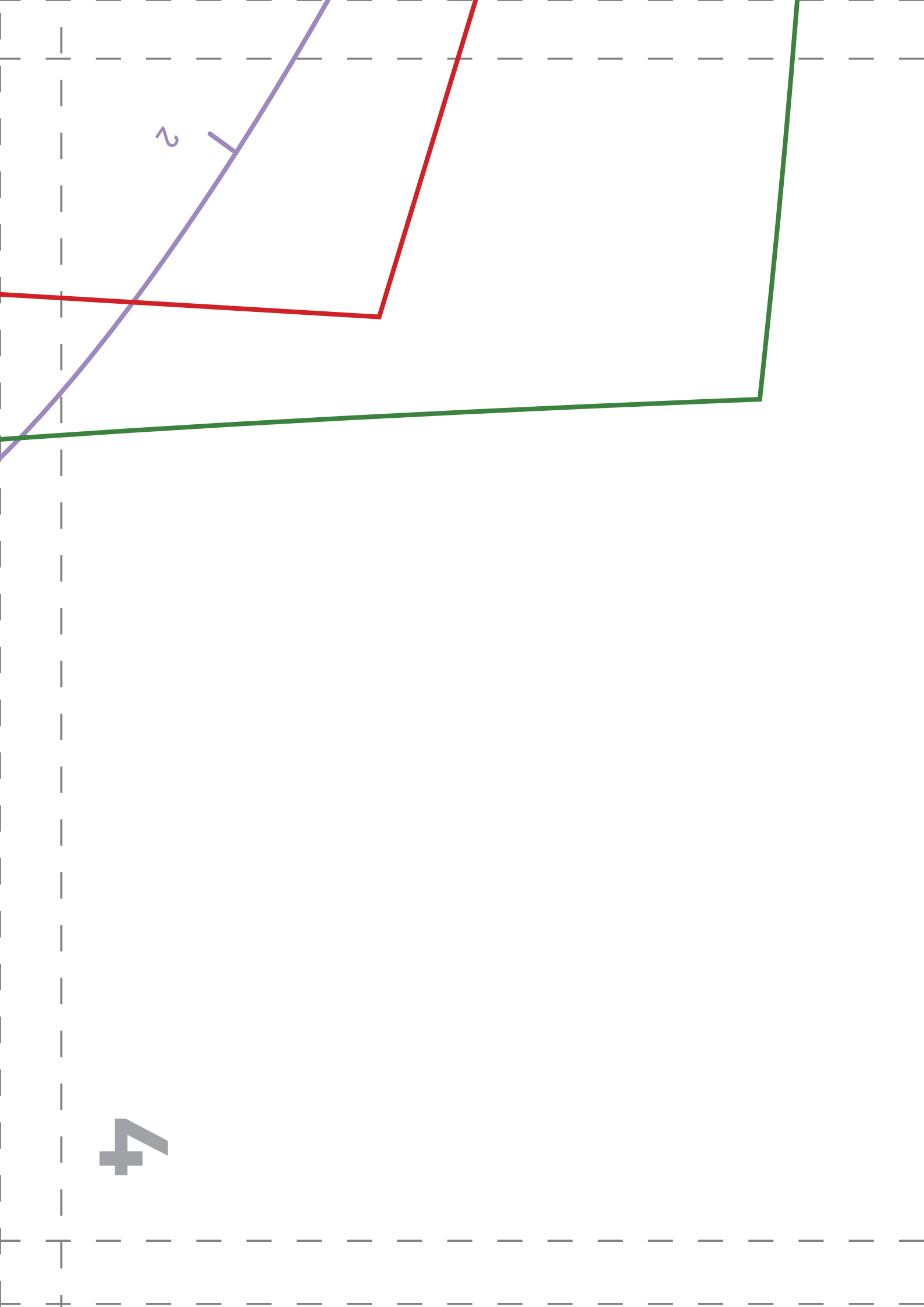
2



2

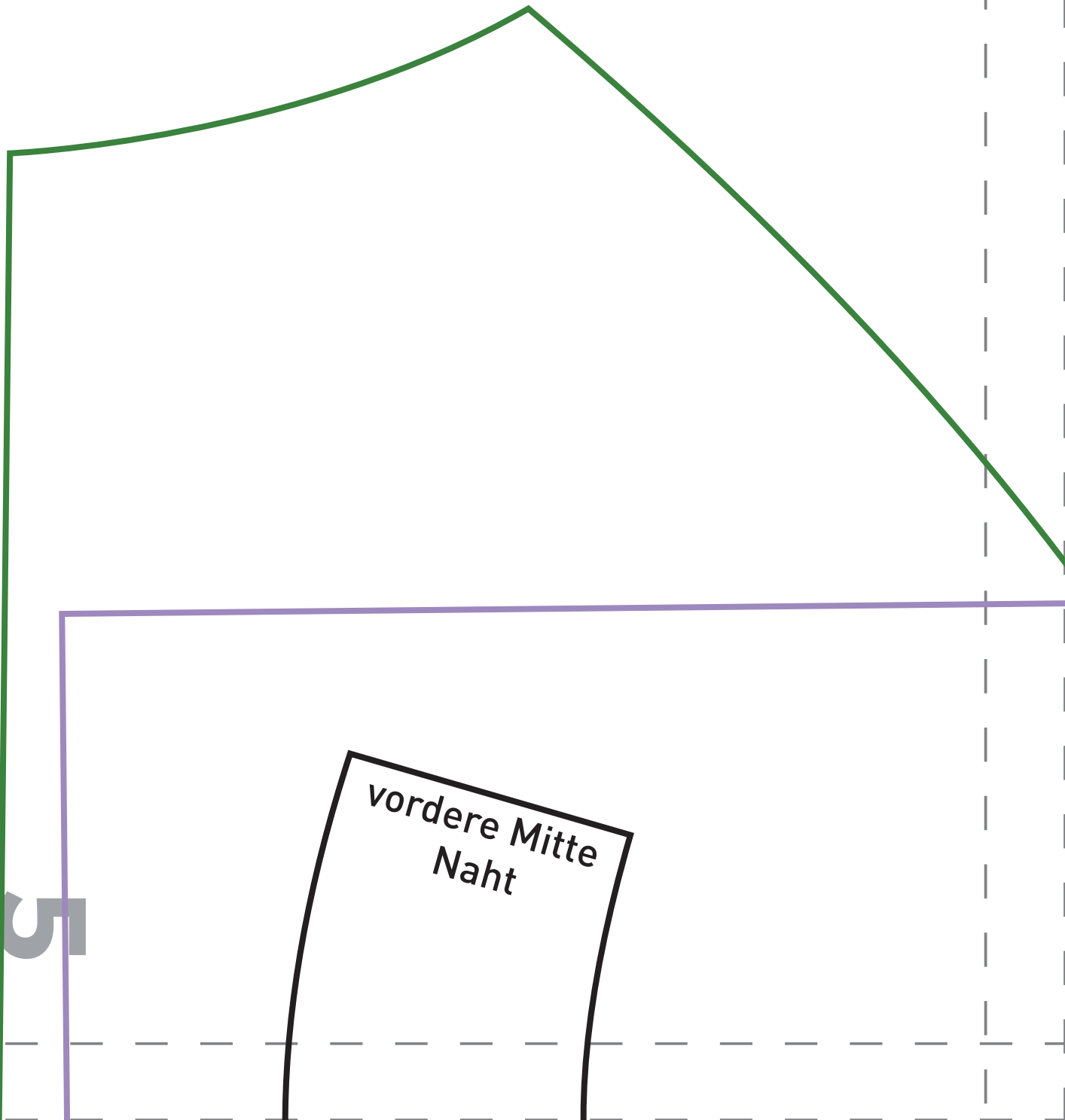
1

3



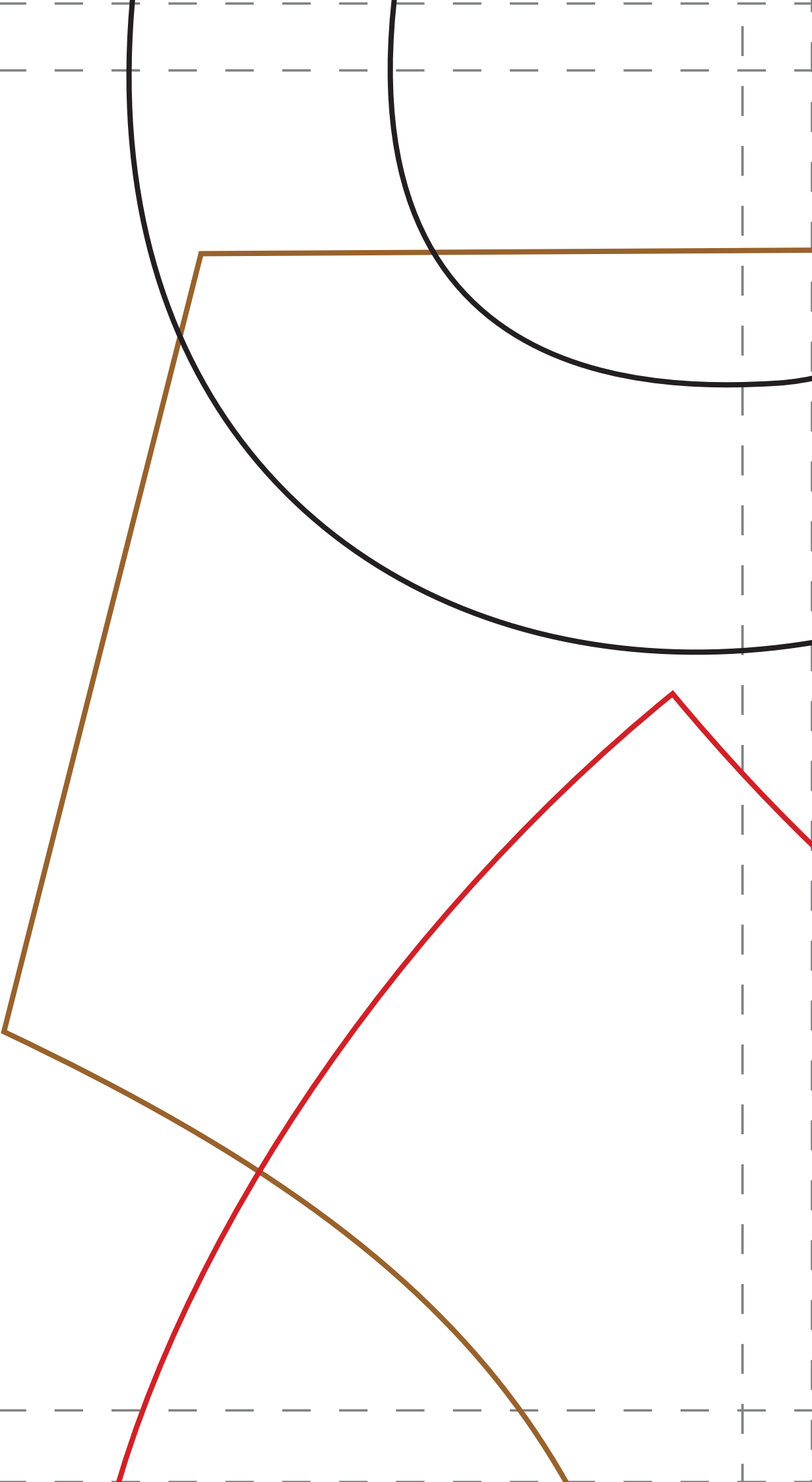
5

vordere Mitte  
Naht



hintere Mitte Naht

6



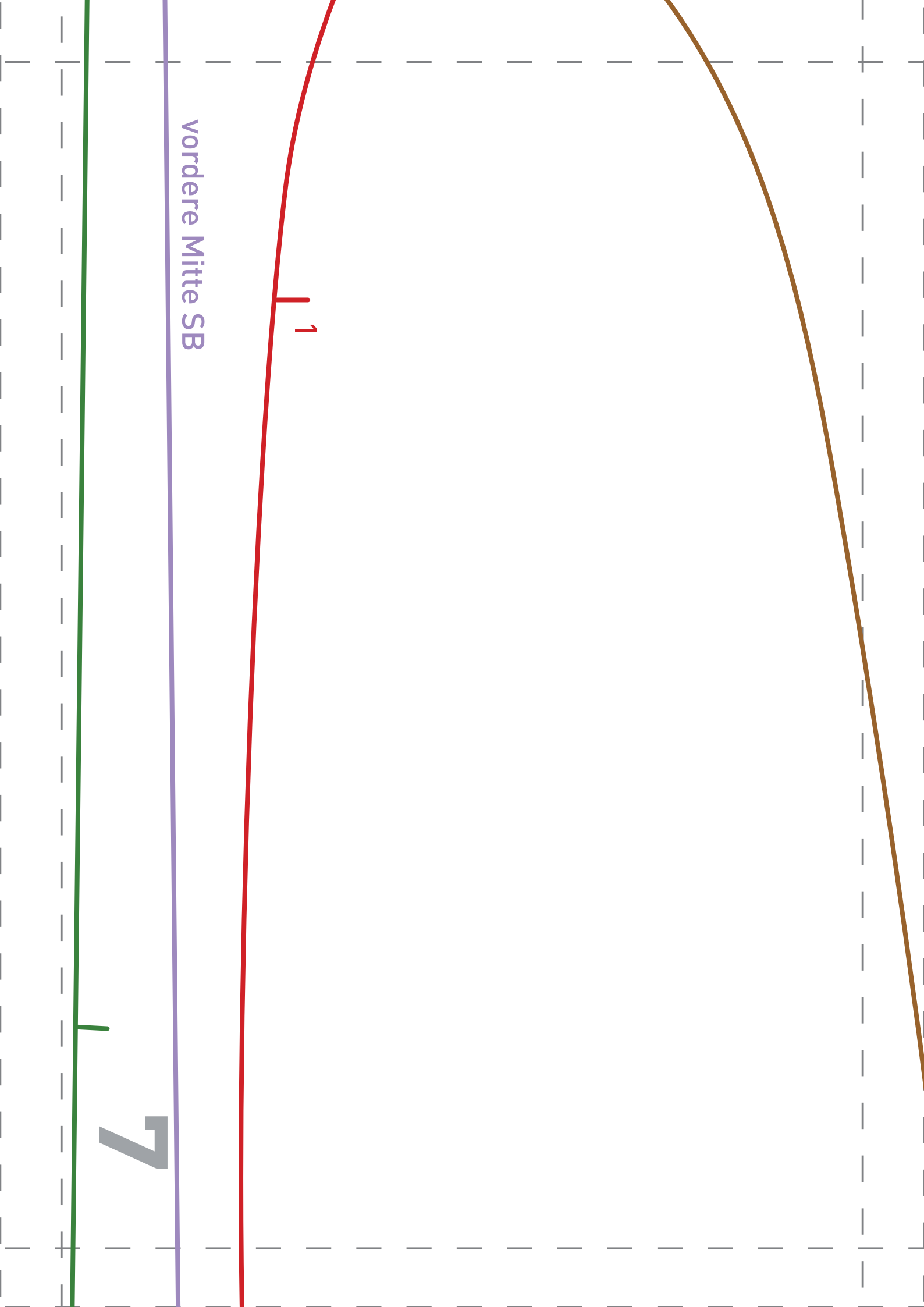


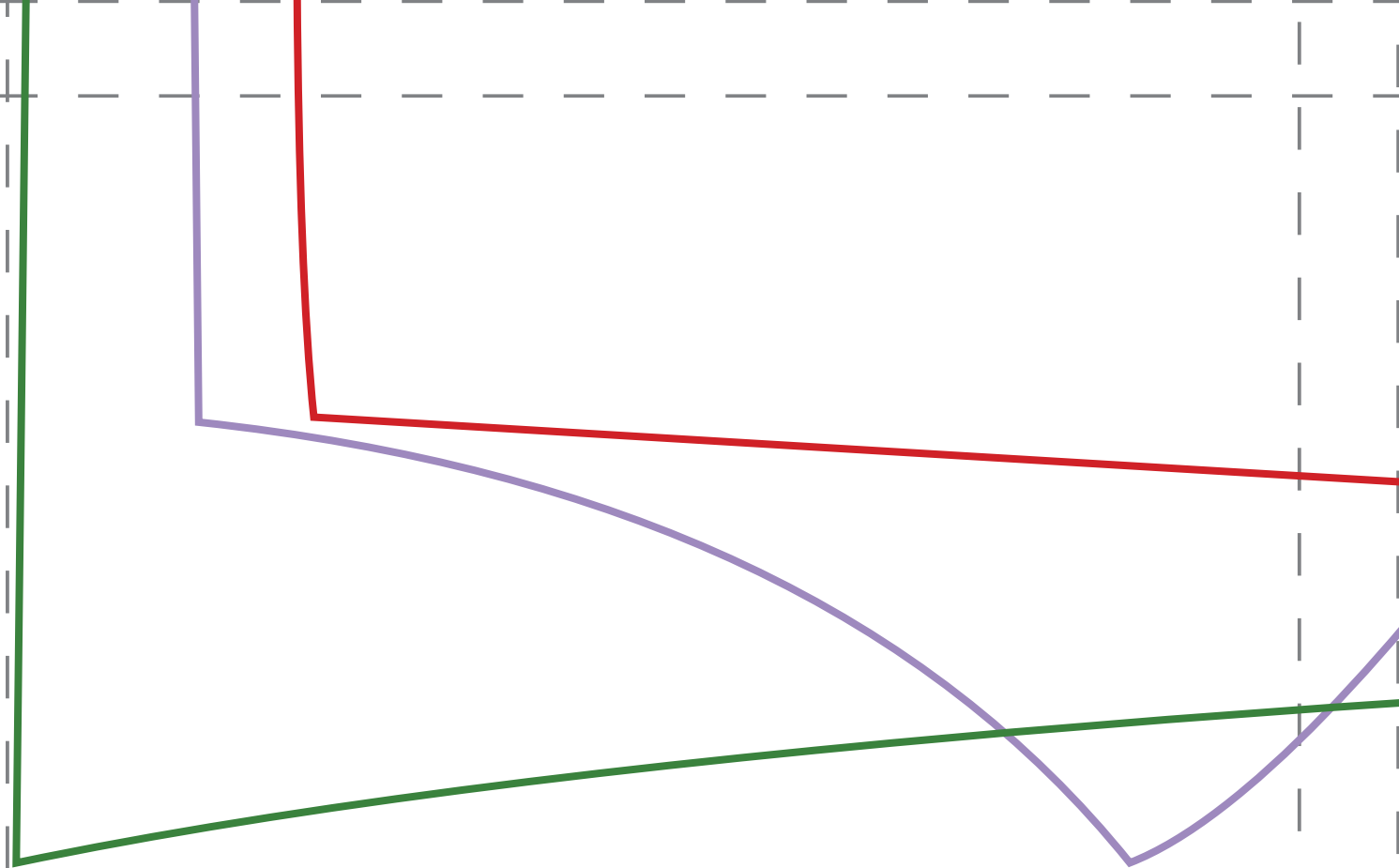
vordere Mitte SB

1

7

1





8