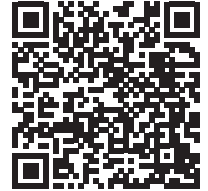


TUTORIAL



TITEL

MINT GREEN COTTON FLEECE DRESS

FROM THE FEATURE

Fashion shooting jersey

SIZE

8-10 UK/4-6US/36/38EU

SISTERMAG

N°34

MATERIALS

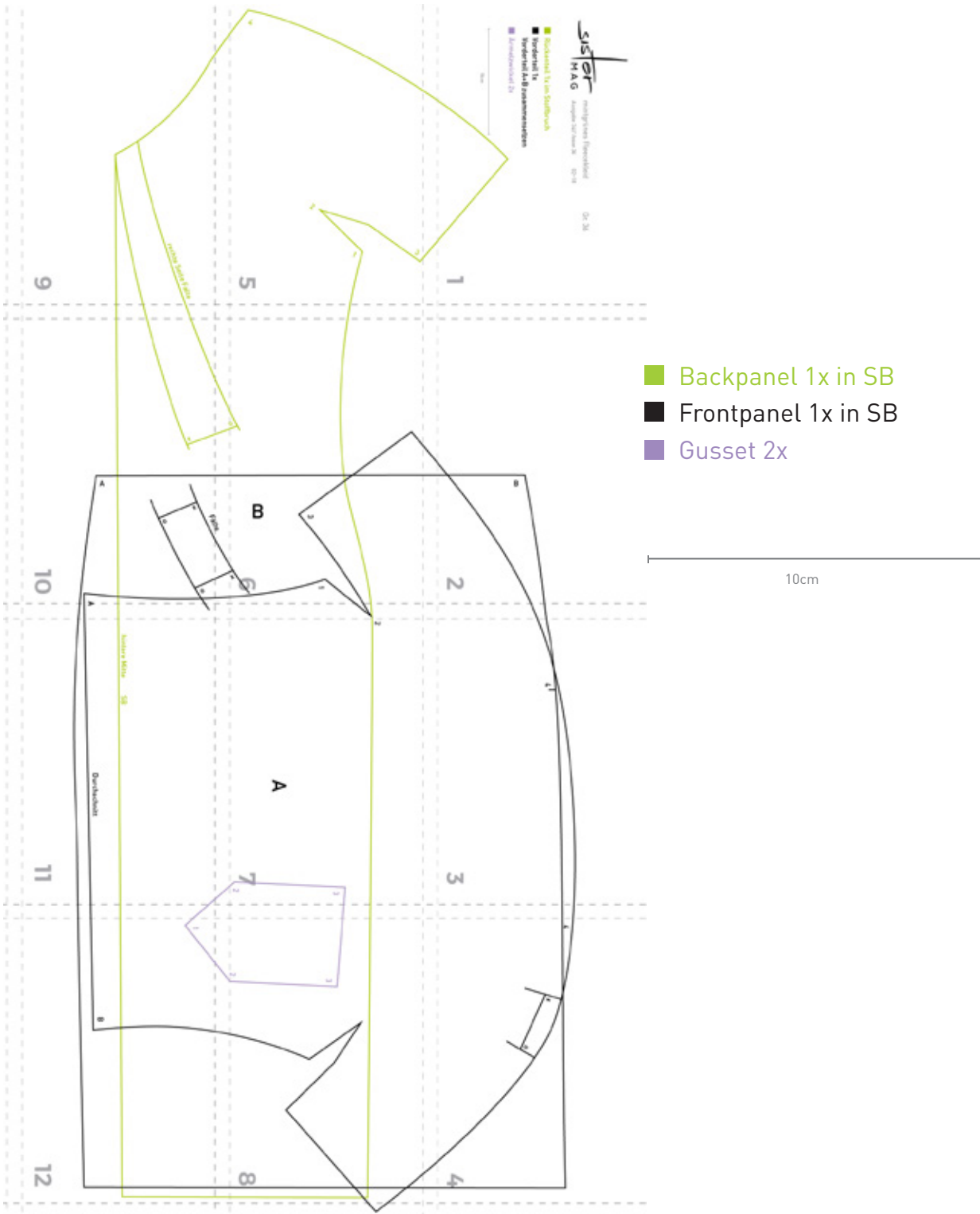
- ❑ 1.3 yd mint green cotton fleece <http://bit.ly/2FSnn7U>

HOW-TO

1. Set folds matching x to o and sew
2. Sew gusset (mind the numbers)
3. Close shoulder and side seams
4. Hem sleeves by hand
5. Hem dress
6. Hand hem backline close to selvedge



PATTERN-OVERVIEW



Sister

M A G

mintgrünes Fleecekleid

Gr. 36/38

Ausgabe 34 // Issue 34

02-18

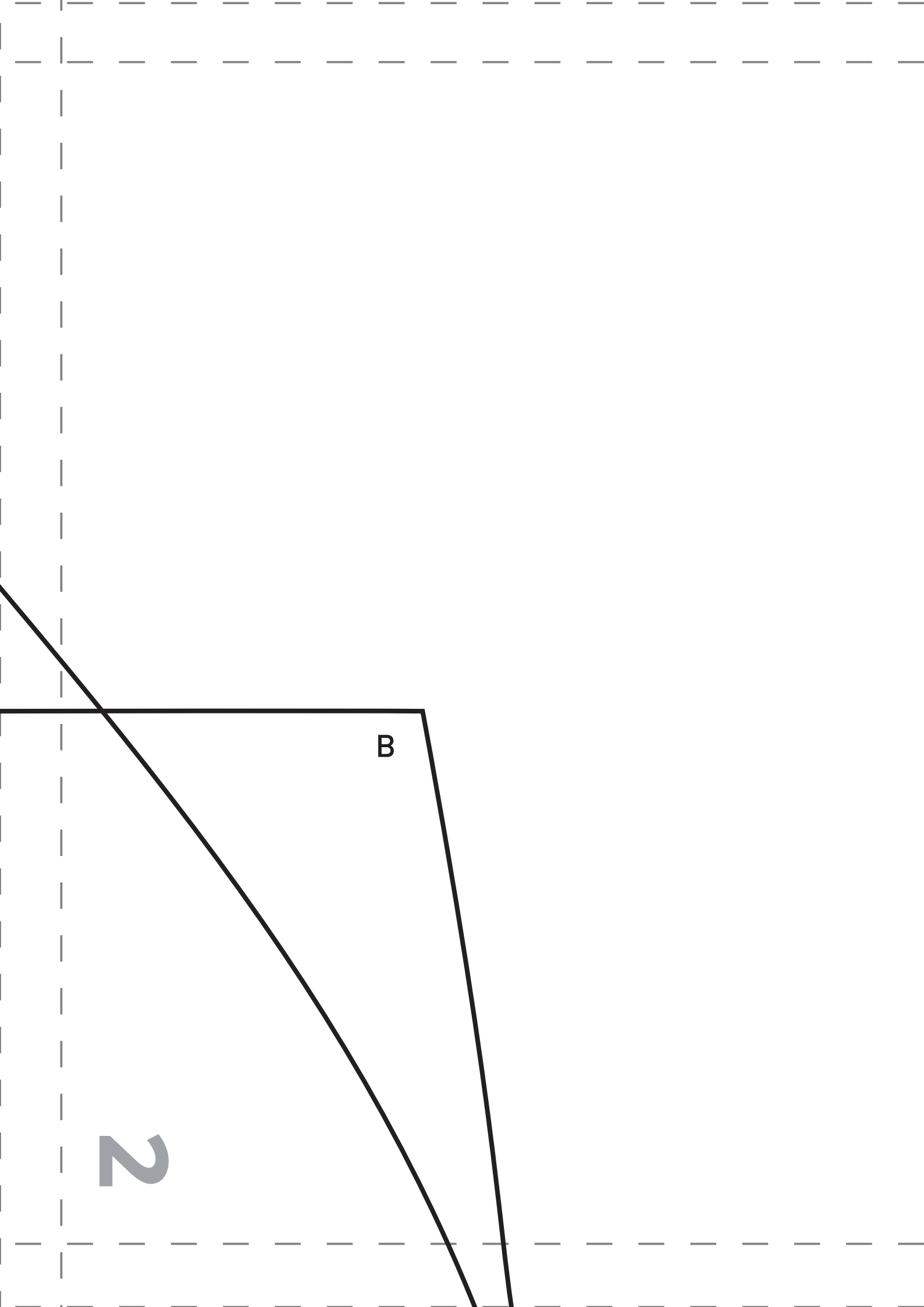
■ Rückenteil 1x im Stoffbruch

■ Vorderteil 1x

Vorderteil A+B zusammensetzen

■ Ärmelzwinkel 2x





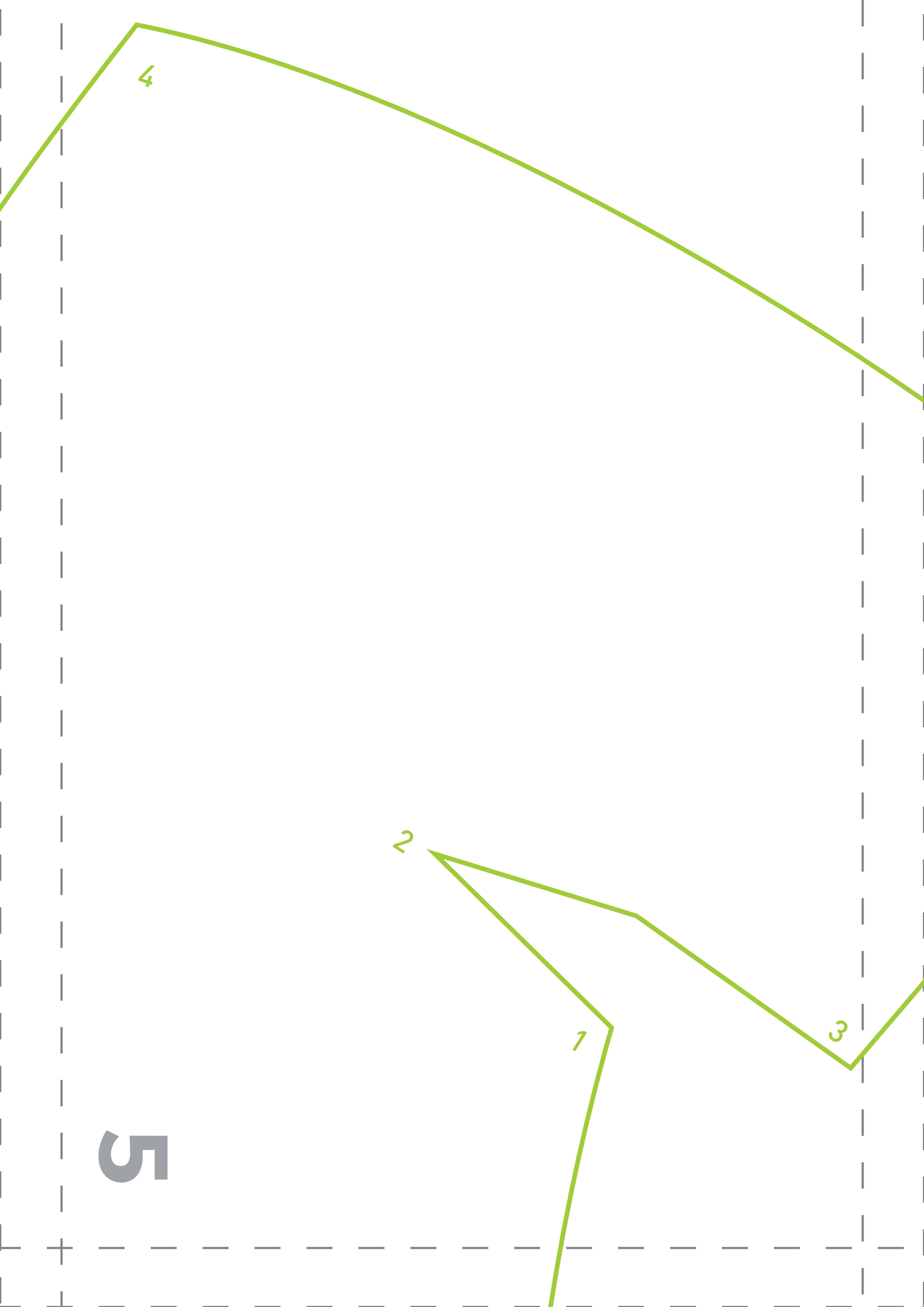
B

2

3

7





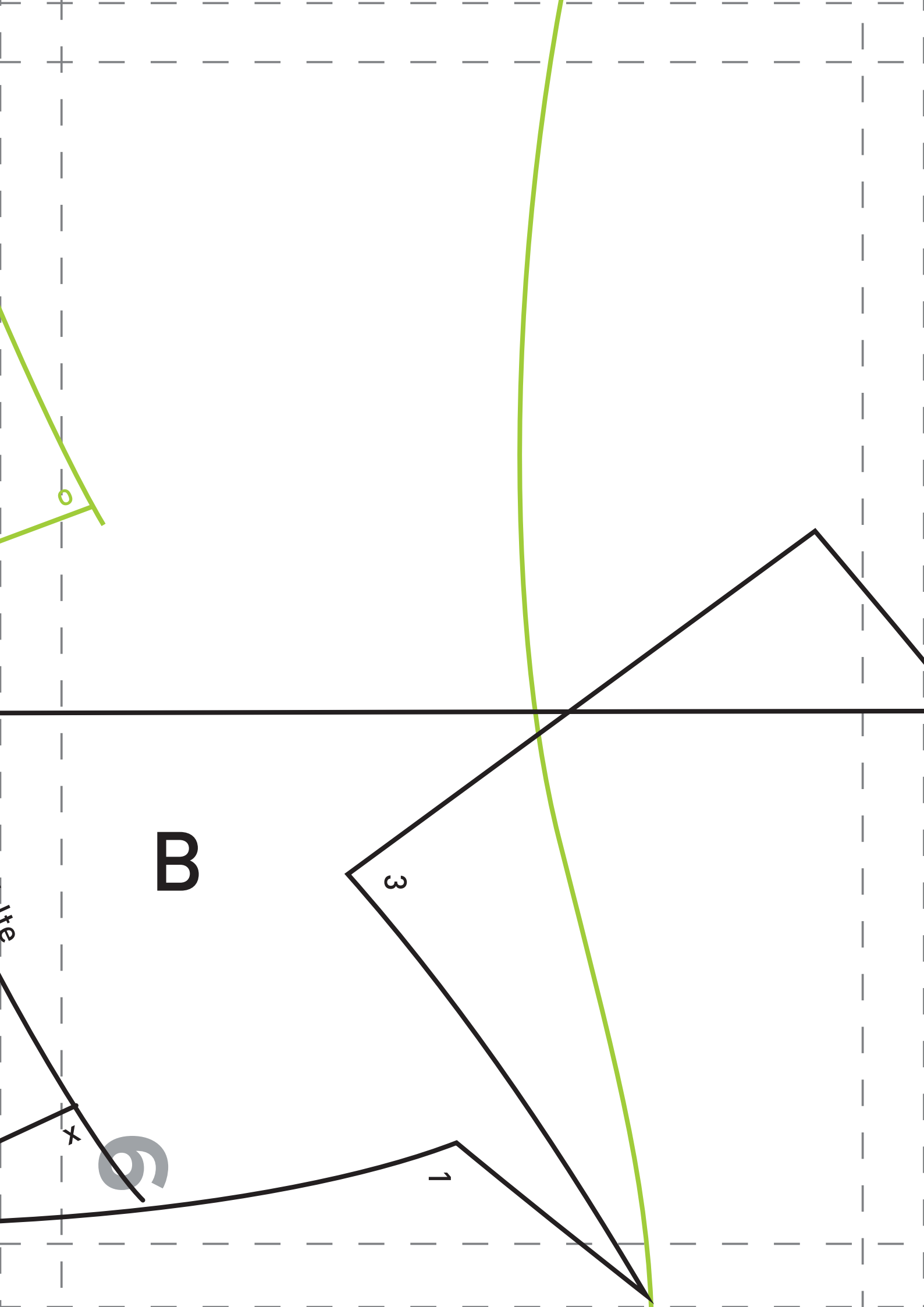
4

2

1

3

5



0

B

3

1

x

l



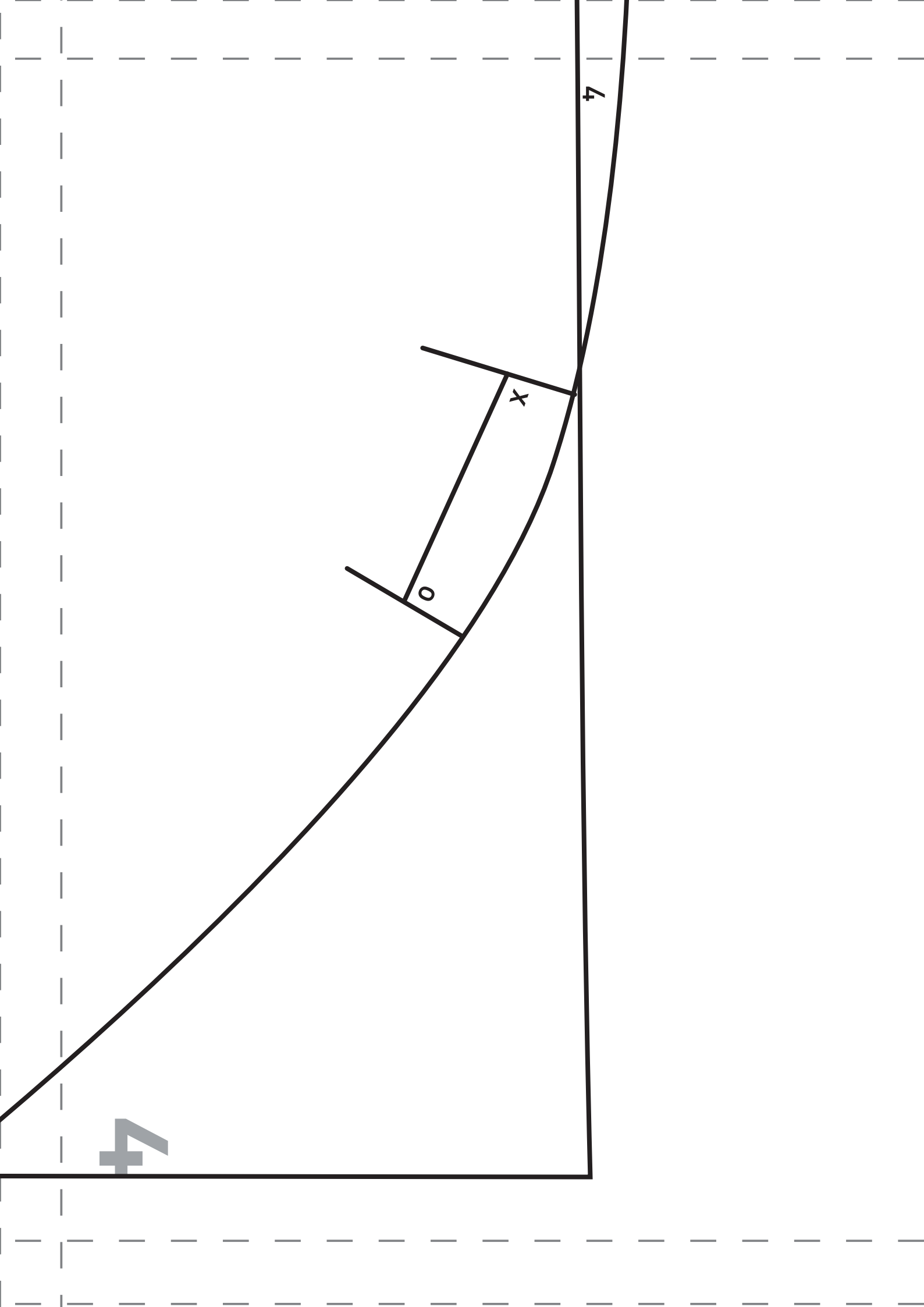
2

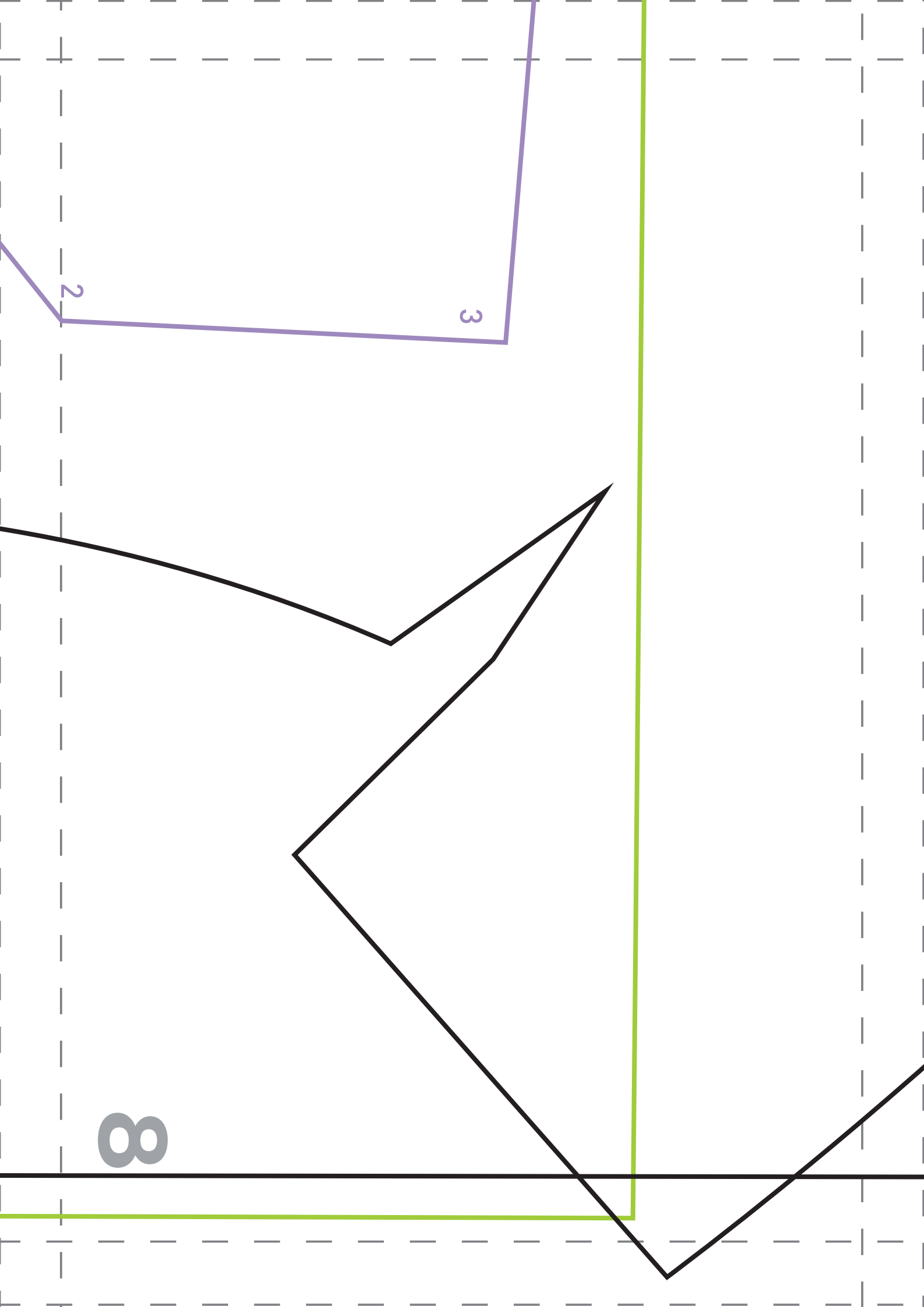
A

2

3





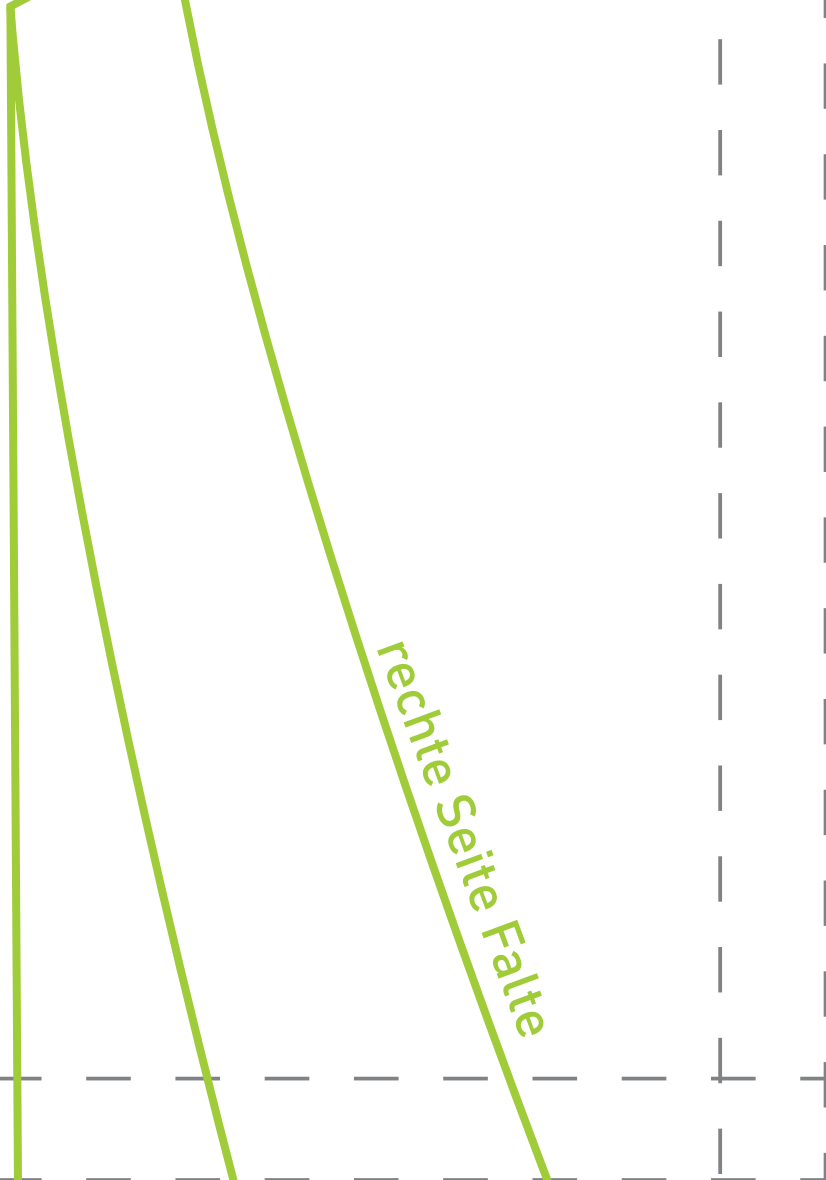


2

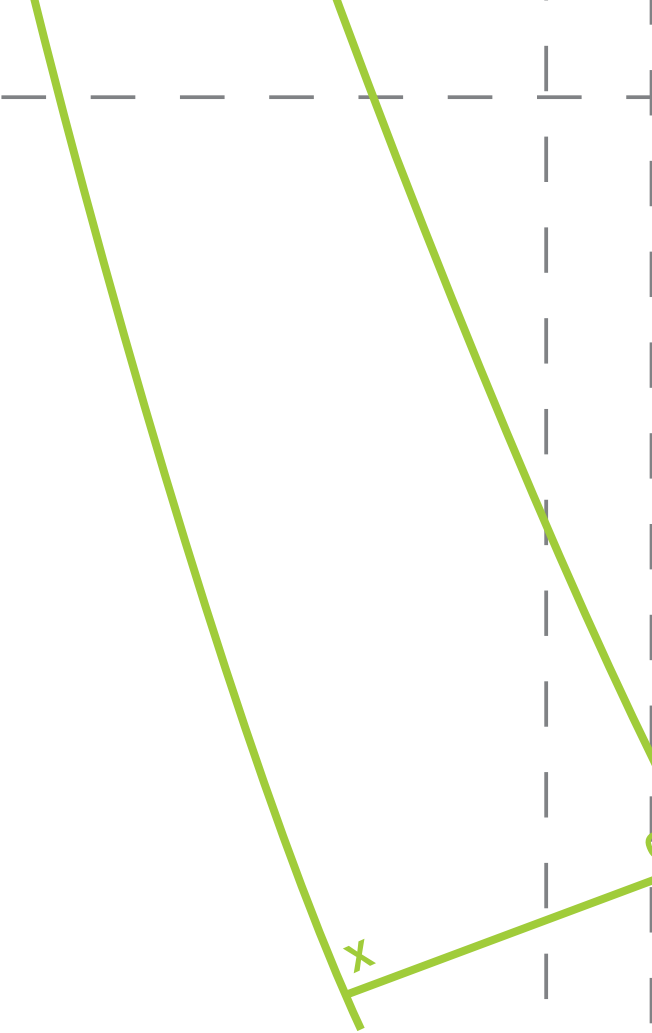
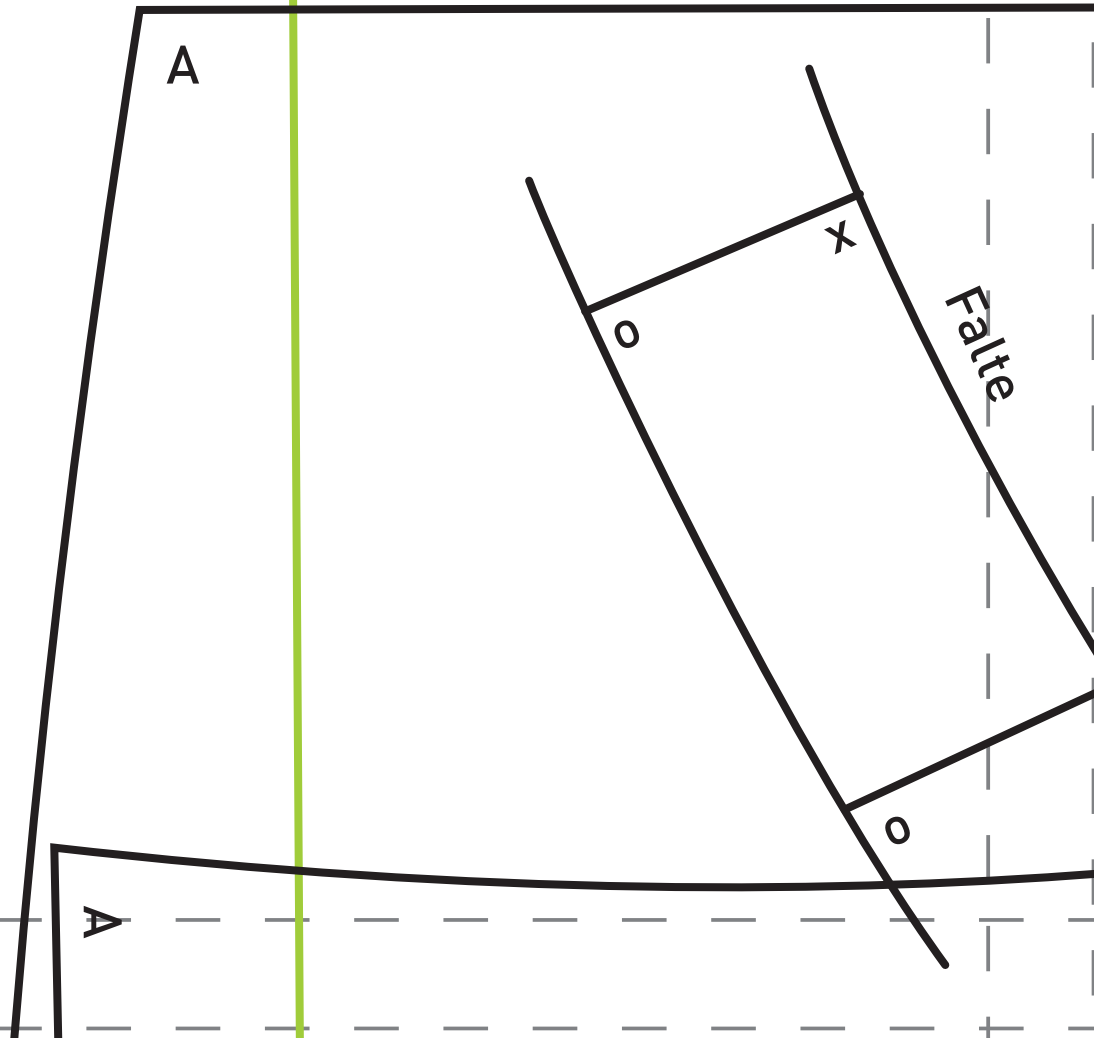
3

8

6



10

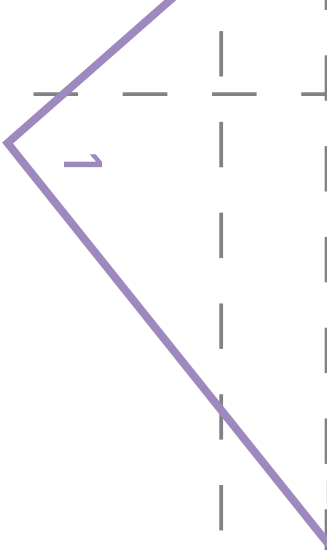


hintere Mitte

SB

Durchschnitt

11



B

12