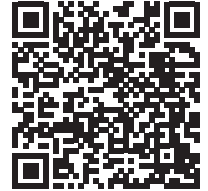


TUTORIAL



TITEL

DARK GREEN JERSEY DRESS

FROM THE FEATURE

Patterns

SIZE

12UK/8US/40EU

SISTERMAG

N°34

MATERIALS

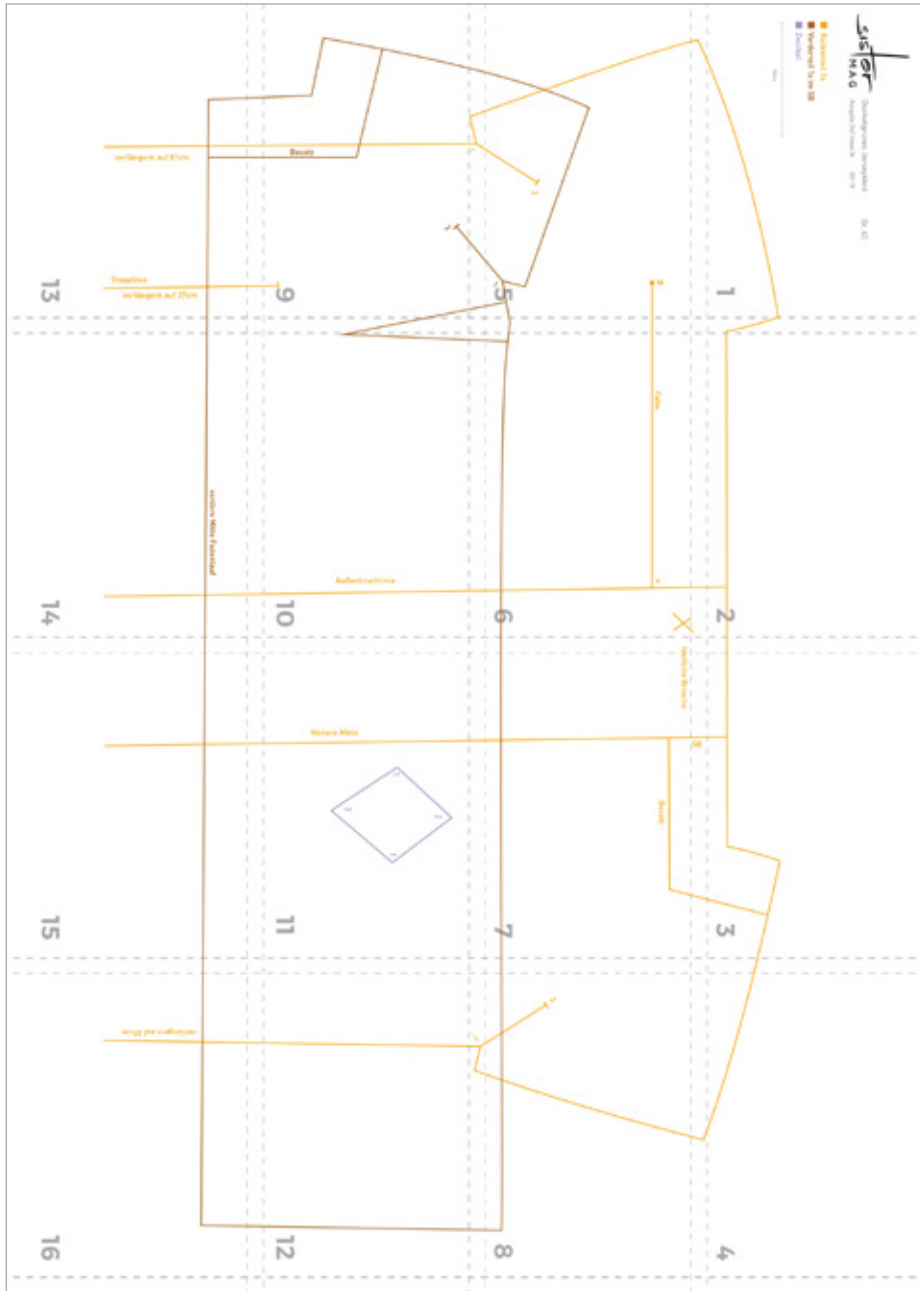
- 2.4 yd dark green cotton jersey <http://bit.ly/2nGvsGg>
- Beads and sequins

HOW-TO

1. Sew front darts
2. Set back fold matching x to o, iron
3. Turn over upper fold edge up to centre back
4. Stitch up fold as per marks
5. Insert sleeve gussets (mind the numbers)
6. Close side and shoulder seams
7. Turn over neckline with facing
8. Hem by hand
9. Hem sleeves by hand
10. Add embroidery



PATTERN-OVERVIEW



- Backpanel 1 x
- Frontpanel 1 x in SB
- Gusset

10cm

Sister MAG

Dunkelgrünes Jerseykleid
Ausgabe 34// Issue 34

02-18

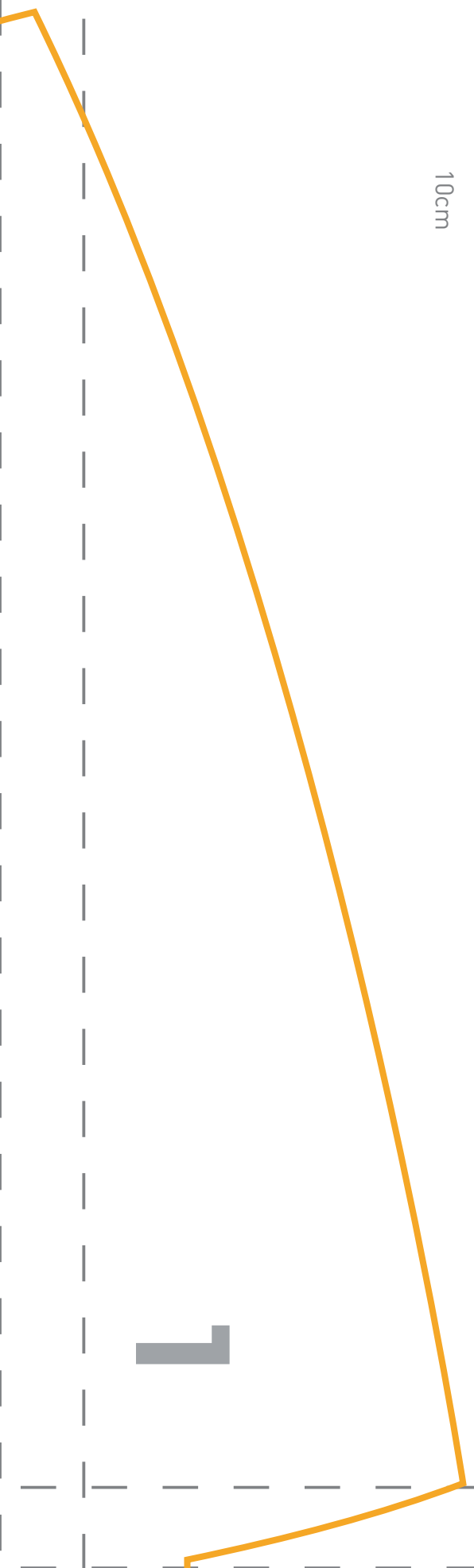
Gr. 40

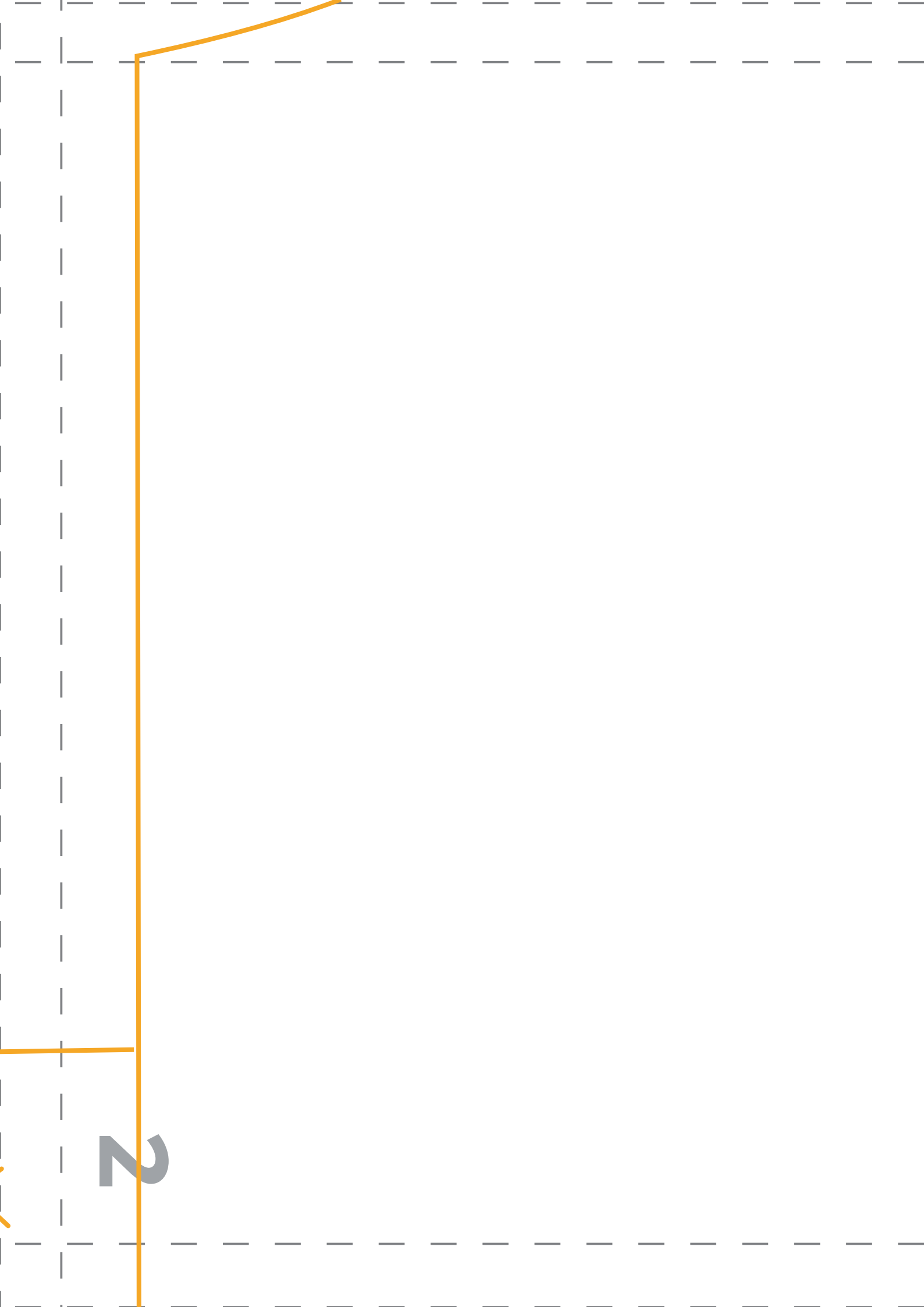
■ Rückenteil 1x

■ Vorderteil 1x im SB

■ Zwickel

10cm





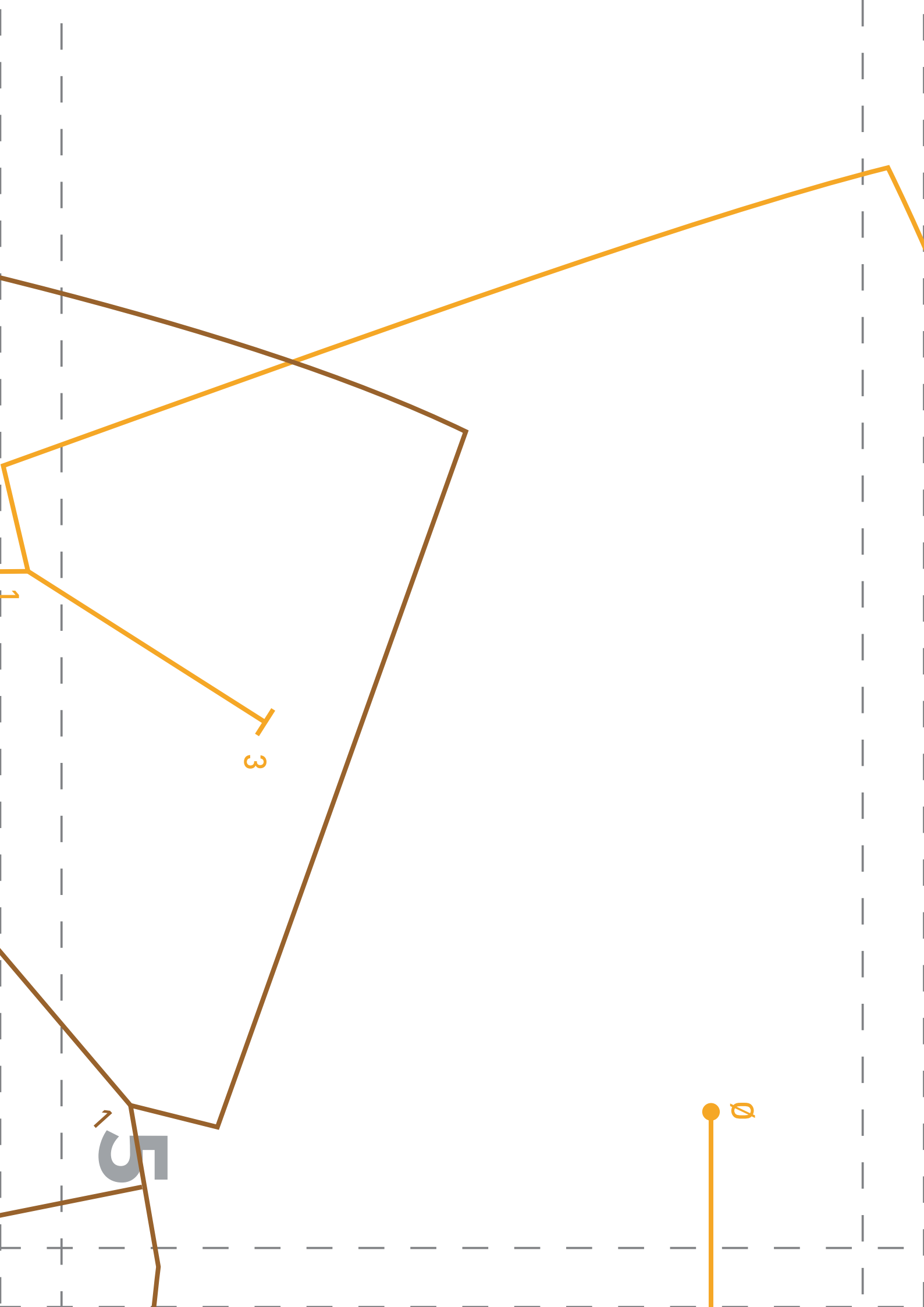
2

SB

3



4





fe

Falte

x

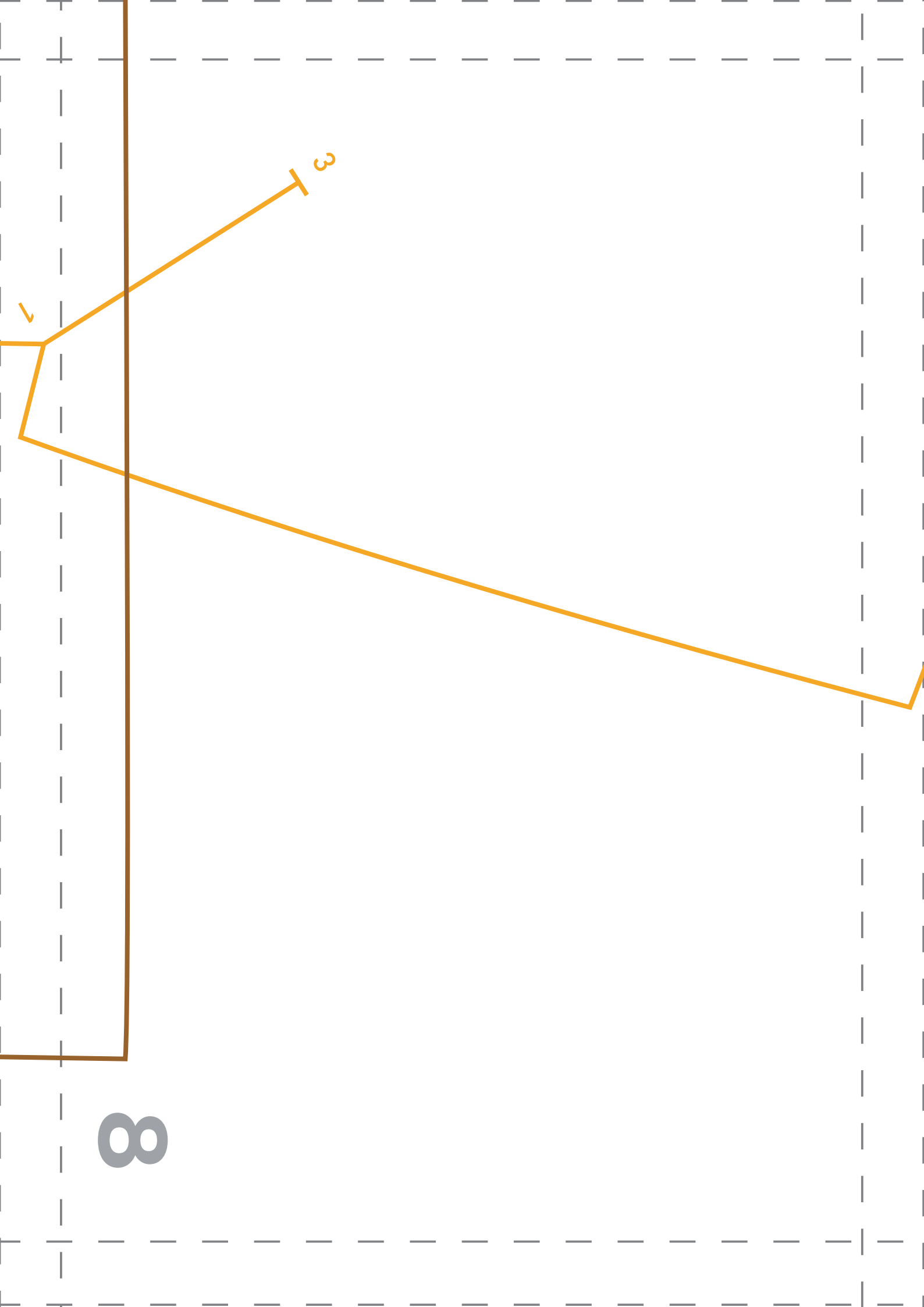
6

festliche Brosche

SB

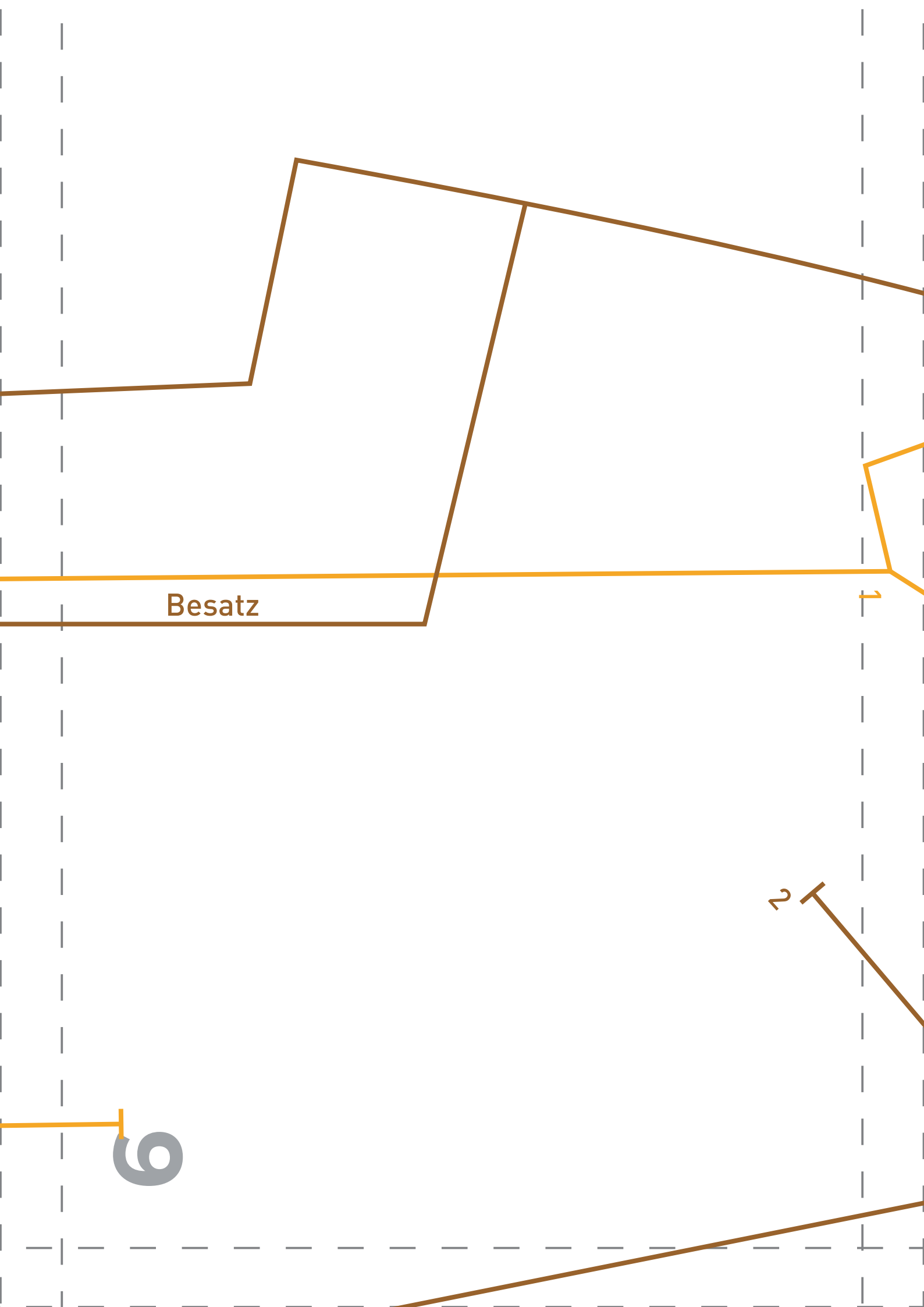
Besatz

7



8

3



Besatz

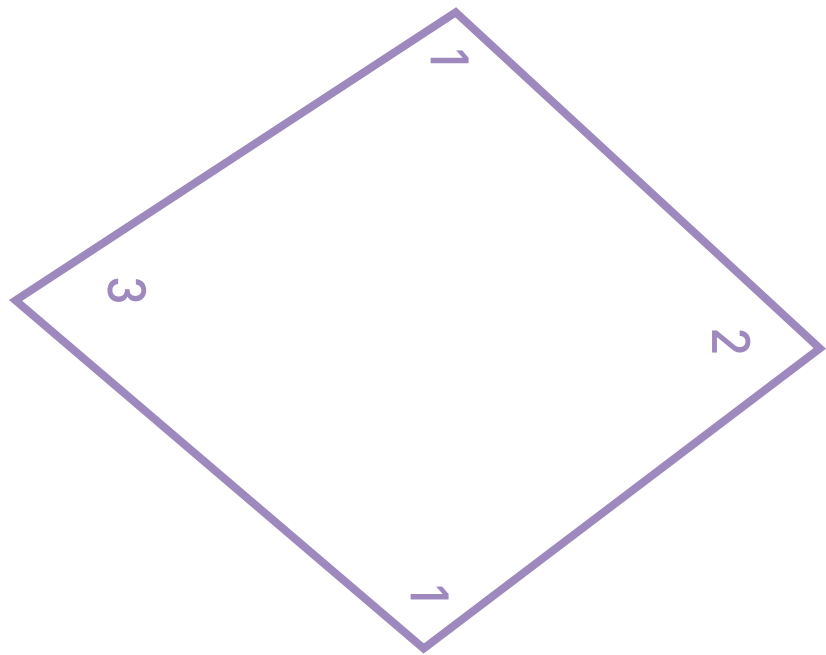
6

2

Außenbruchlinie

10

Hintere Mitte



12

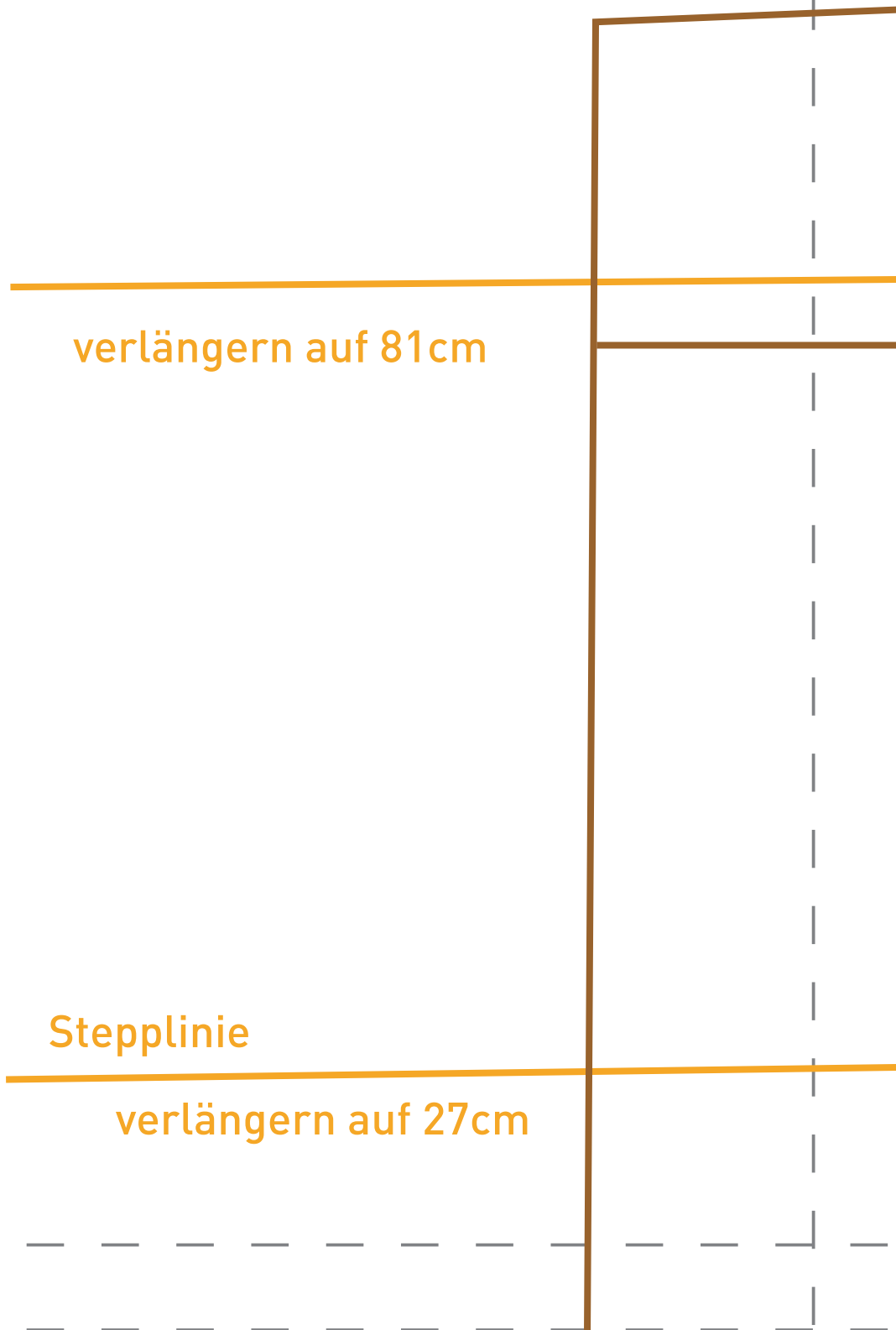


13

verlängern auf 81cm

Stepplinie

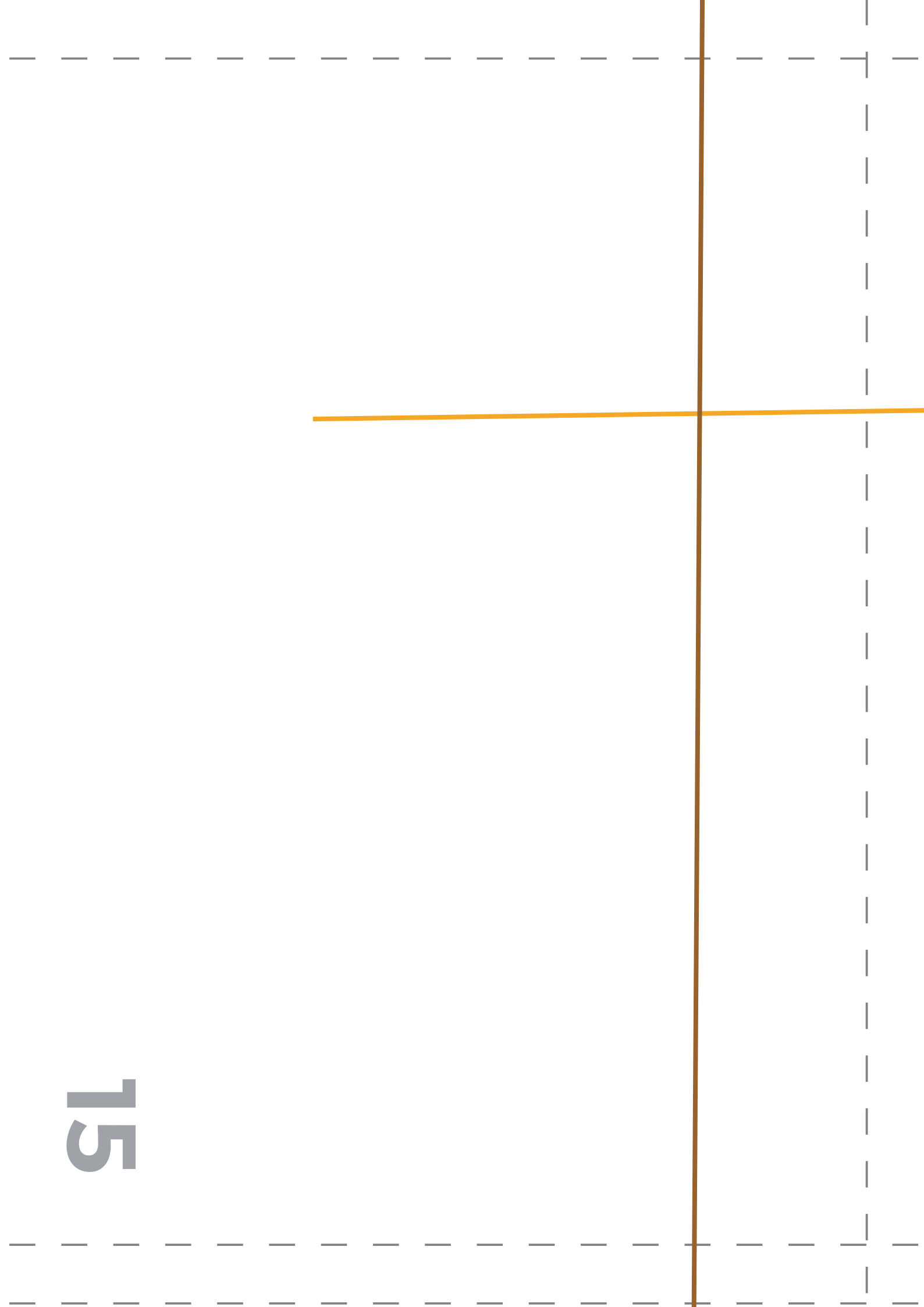
verlängern auf 27cm



vordere Mitte Fadenlauf

14

15



verlängern auf 81cm

