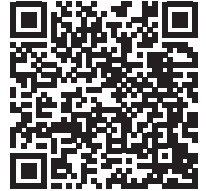


TUTORIAL



TITEL

GREY BLOUSE WITH REVERSIBLE COLLAR

FROM THE FEATURE

Patterns

SISTERMAG

N°32

MATERIALS

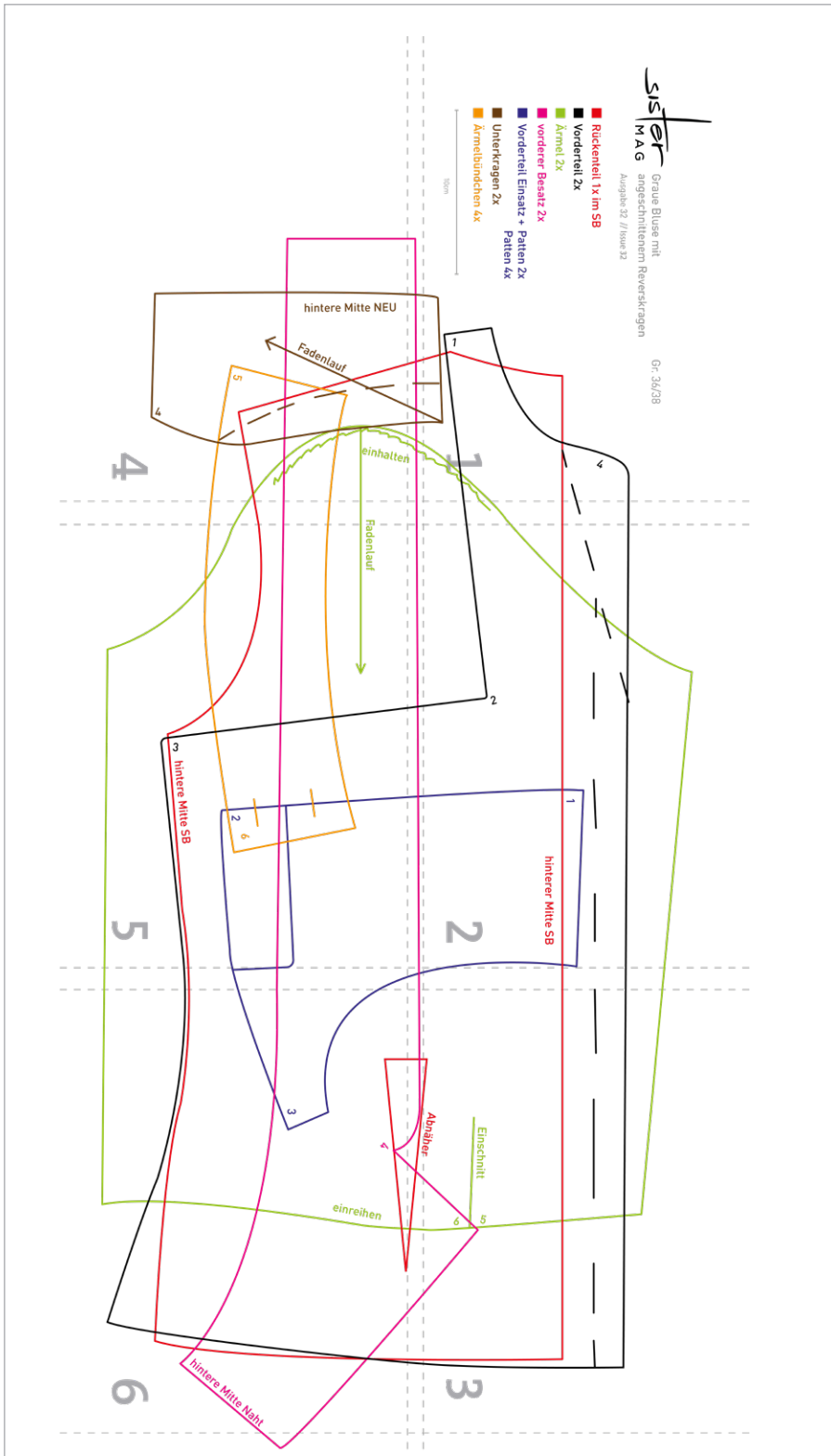
- ❑ 1.2 m of grey fabric.
Or use the remainder of the fabric from the dress.
- ❑ 8 buttons

HOW-TO

1. Sew dart on the back section.
2. Fold flaps, iron and attach to the front panels as indicated by the markers.
3. Sew front panel inserts into the front panel. Pay attention to the numbers.
4. Close shoulder and side seams.
5. Sew on undercollar. Pay attention to the numbers.
6. Work on sleeves.
7. Work on slits in the sleeves.
8. Close the sleeve seams and sew on the sleeve ties.
9. Insert the sleeves.
10. Reinforce panel with insert.
11. Sew panel to the front edge.
12. Sew on buttons through the buttonholes.
13. Hem blouse by hand.



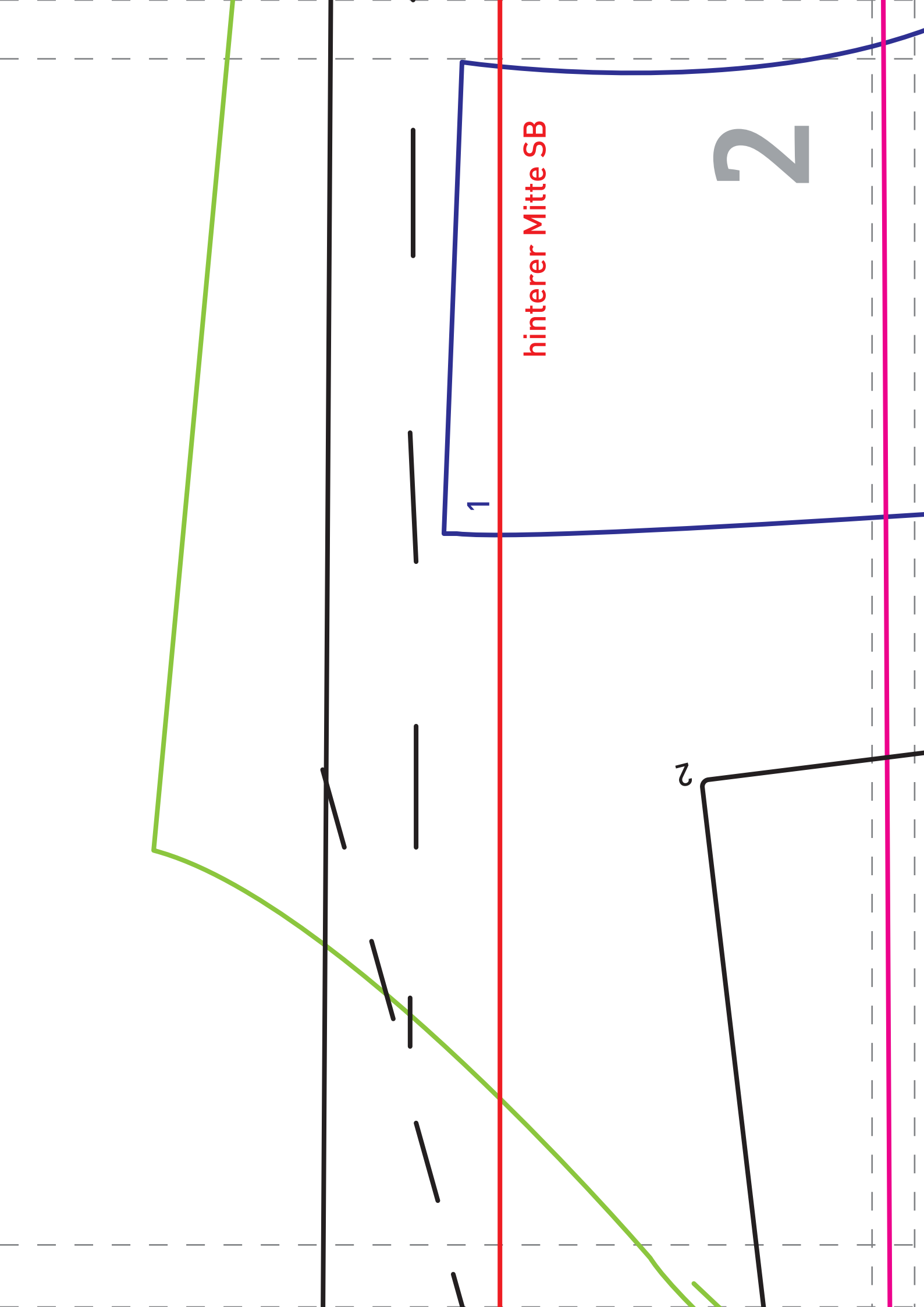
PATTERN-OVERVIEW



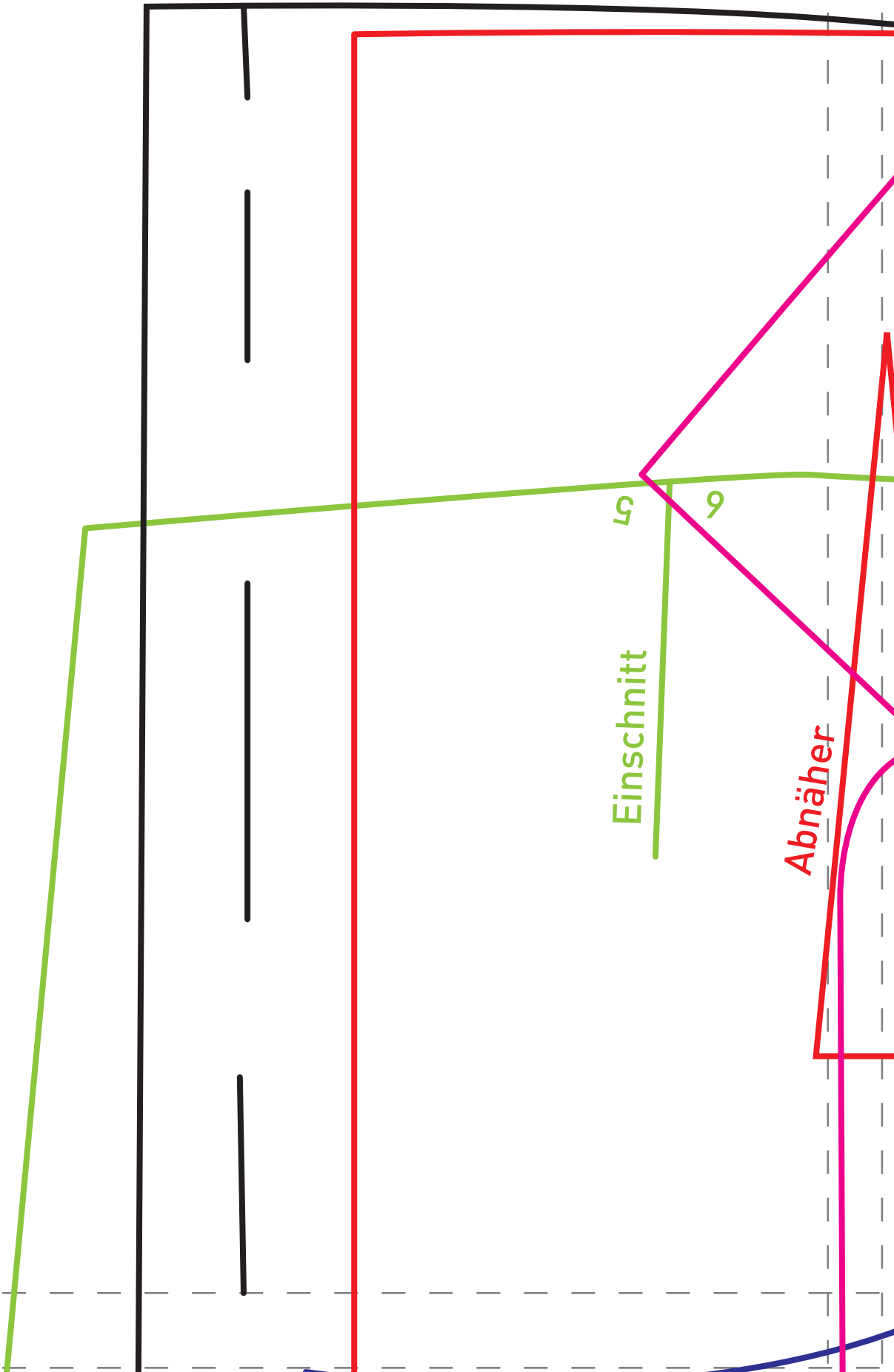
- Back panel 1x in SB
- Front panel 2x
- Sleeves 2x
- Front panel 2x
- Front insert + flaps 2x + flaps 4x
- Undercollar 2x
- Sleeve ties 4x

- Rückenteil 1x im SB
- Vorderteil 2x
- Ärmel 2x
- vorderer Besatz 2x
- Vorderteil Einsatz + Patten 2x
Patten 4x
- Unterkragen 2x
- Ärmelbündchen 4x





3



4

7

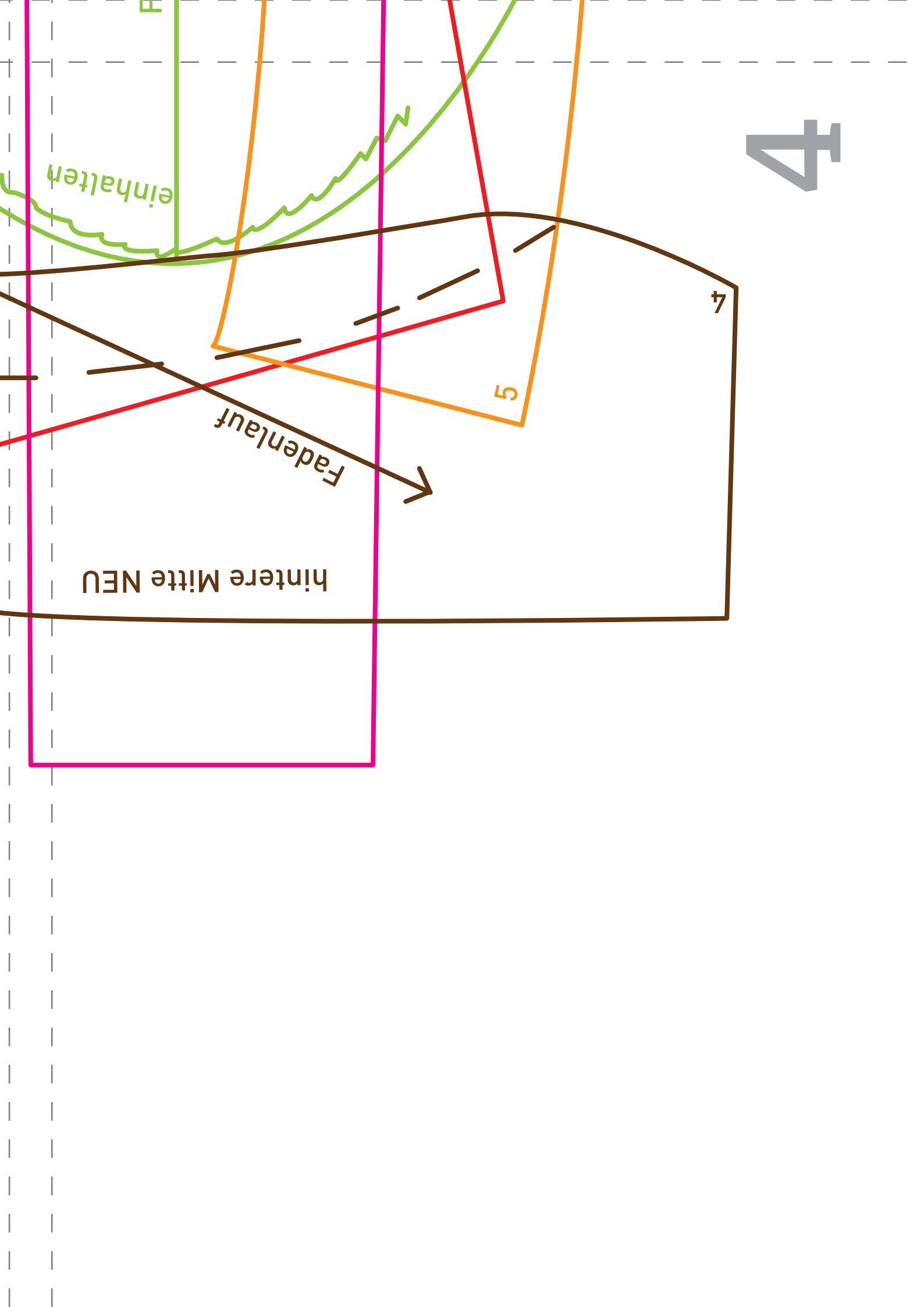
5

hintere Mitte NEU

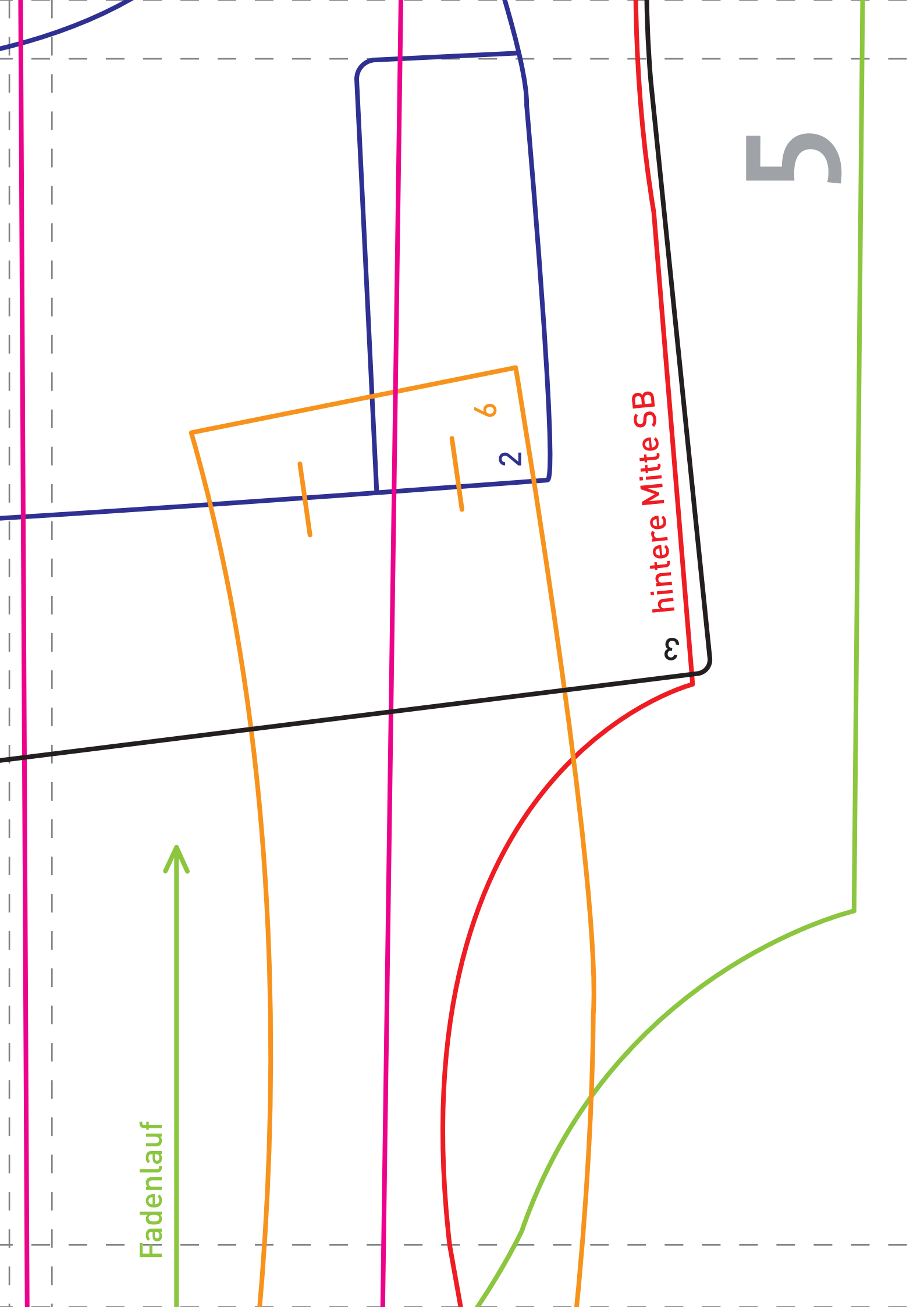
Fadenlauf



einhalten



Fadenlauf



hintere Mitte Naht

einreihen

4

3

...allef

