

TUTORIAL



TITLE

BRAUNER SAMTHAUSANZUG

FROM THE FEATURE

Miele

SISTERMAG

N°29

SIZE 38

MATERIALS

- » 1,9 m velvet or nicky velours
e.g. <http://bit.ly/2l6hi0C>
- » 60 cm Fabric for cuffs
<http://bit.ly/2l6o0sV>
- » 2 eyelets
- » 1 m cord

HOW-TO

1. Put darts in the back parts of the pants
2. Topstitch the crease in the front parts of the pants as drawn on
3. Sew inner and outer seams of the pants
4. Work along the sown pockets as drawn on
5. Sew the middle seams of your pants
6. Cut out two of your cuffs for the pants 24 cm x 17 cm
7. Cut out one waistband 66 cm x 15 cm
8. Fold the eyelets into the waistband at the front and centre
9. Sew the cuffs together and double them, sewing them onto the bottom of the pant leg
10. Sew the waistband together, double it and sew it onto the top part of your pants
11. Put the cord in
12. Close the darts in the front and back
13. Sew in the gusset as drawn on
14. Close the side and shoulder seams

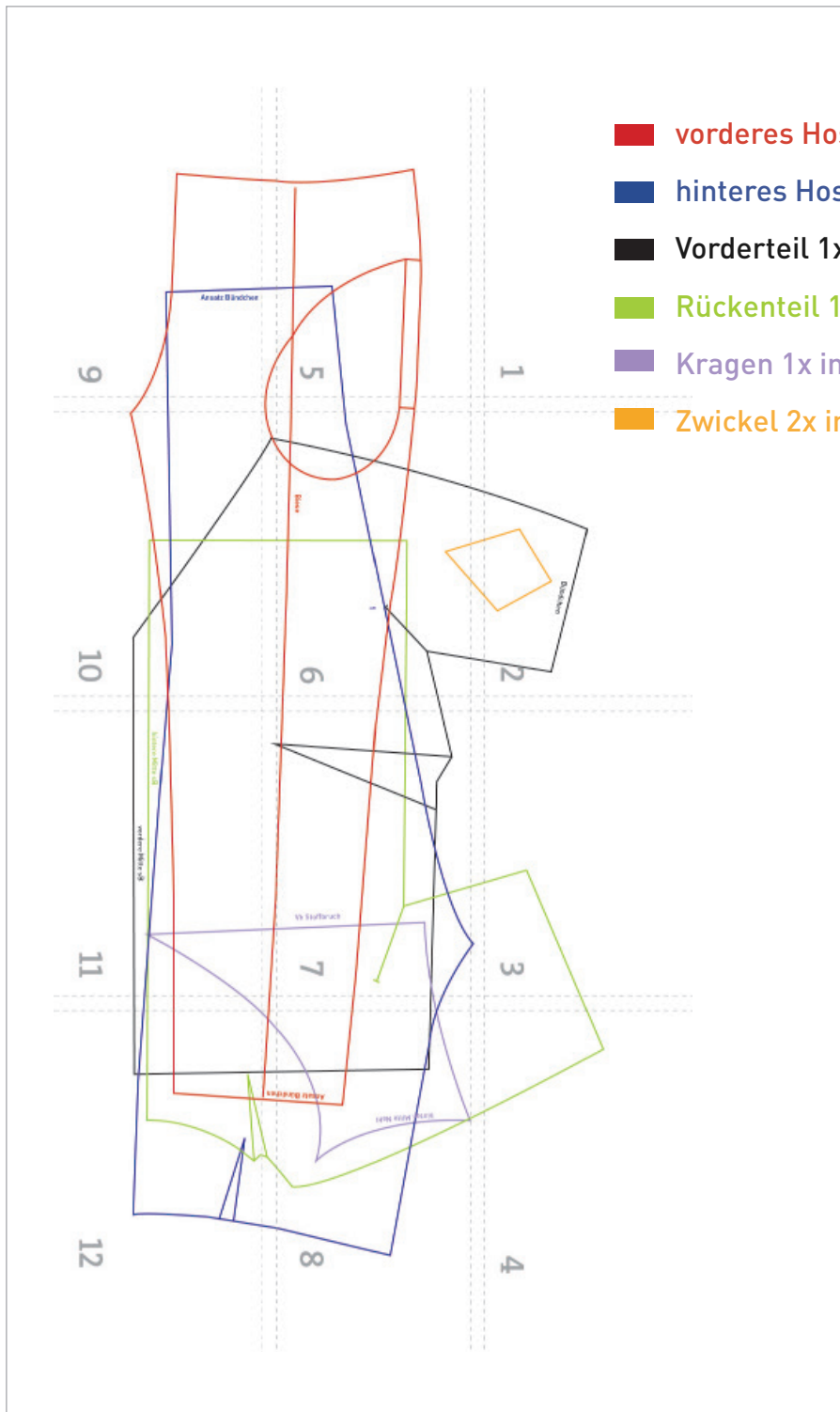


CONTINUATION

15. Cut out the sleeve cuffs 27 cm x 18 cm, sew them together, double and sew them onto the bottom of the sleeves
16. Sew the collar from cuff fabric together in the back middle and attach to the neckline
17. Attach collar
18. Hem the bottom of your top



CUTTING PATTERN - OVERVIEW



- 1** vorderes Hosenteil 2x / *front trousers panel 2x*
- 2** hinteres Hosenteil 2x / *back trousers panel 2x*
- 3** Vorderteil 1x im SB / *front panel 1x in SB*
- 4** Rückenteil 1x im SB / *front panel 1x in SB*
- 7** Kragen 1x im SB / *collar 1x in SB*
- 8** Zwickel 2x im Bündchenstoff / *gusset 1x in cuff fabric*

Braune Samthausanzug

Ausgabe 29 // Issue 29 05 - 17



■ vorderes Hosenteil 2x / front trousers panel 2x

■ hinteres Hosenteil 2x / back trousers panel 2x

■ Vorderteil 1x im SB / front panel 1x in SB

■ Rückenteil 1x im SB / front panel 1x in SB

■ Kragen 1x im SB / collar 1x in SB

■ Zwickel 2x im Bündchenstoff / xxx 1x in xxx

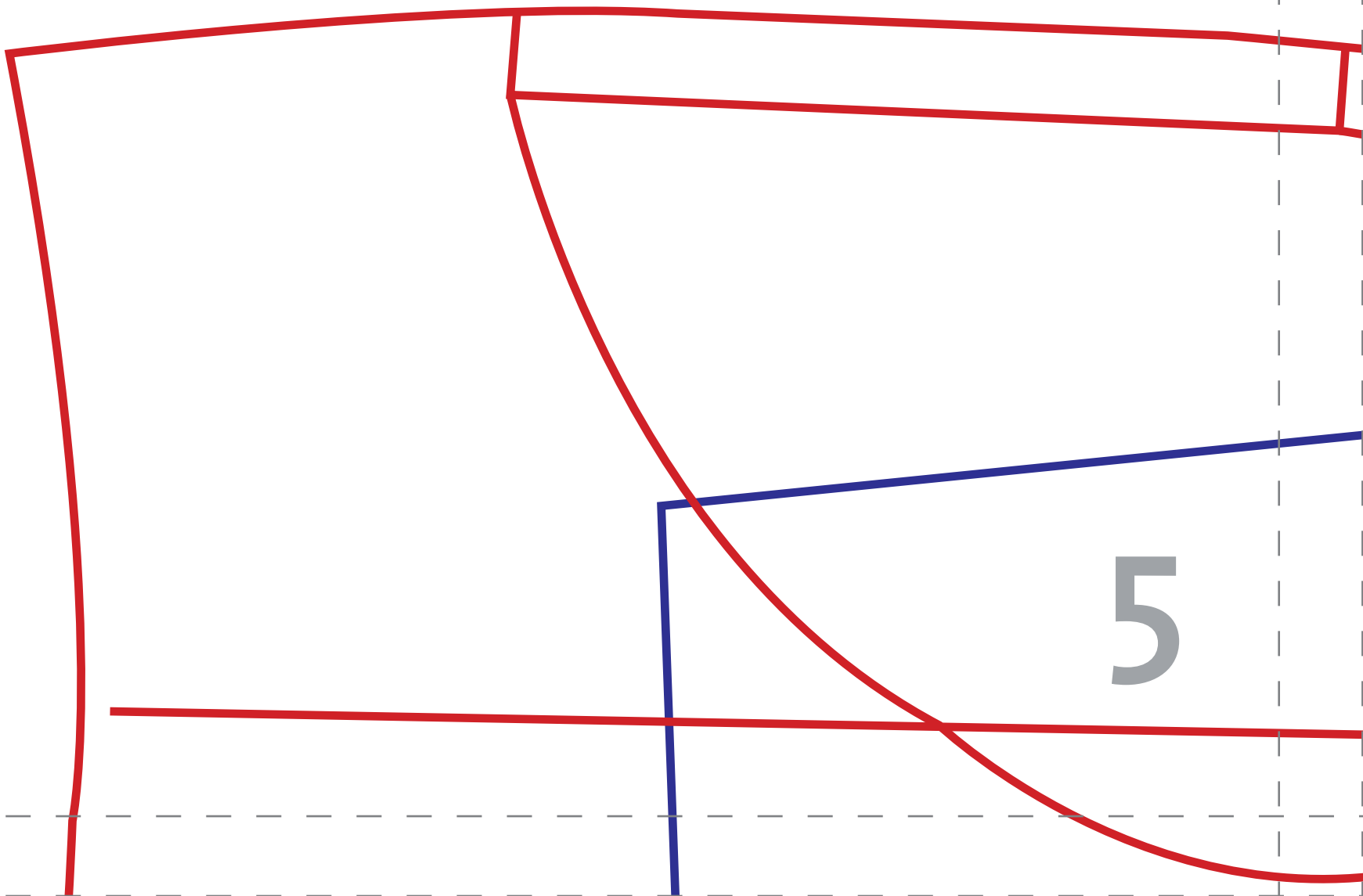
1

Bündchen

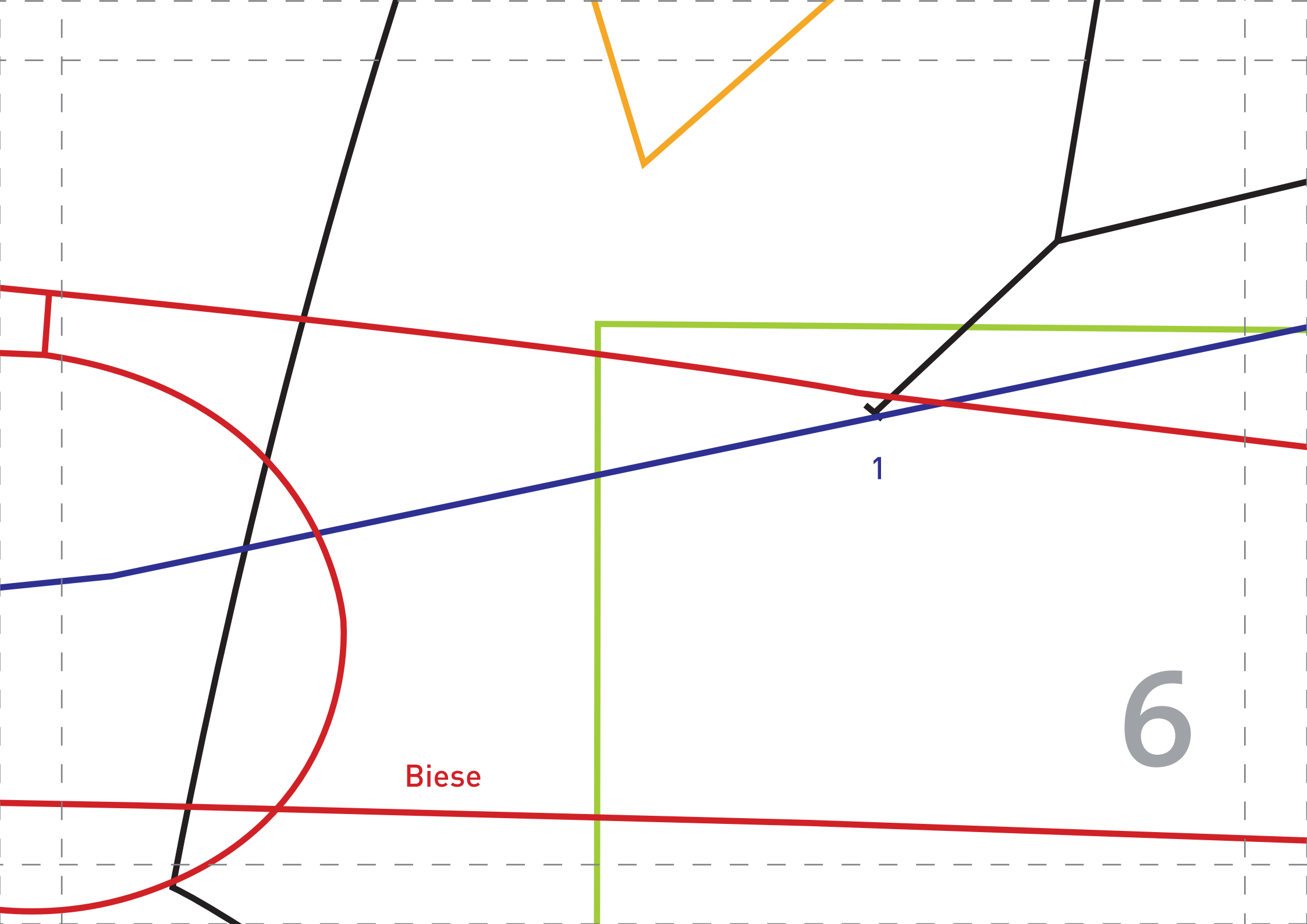
2



3



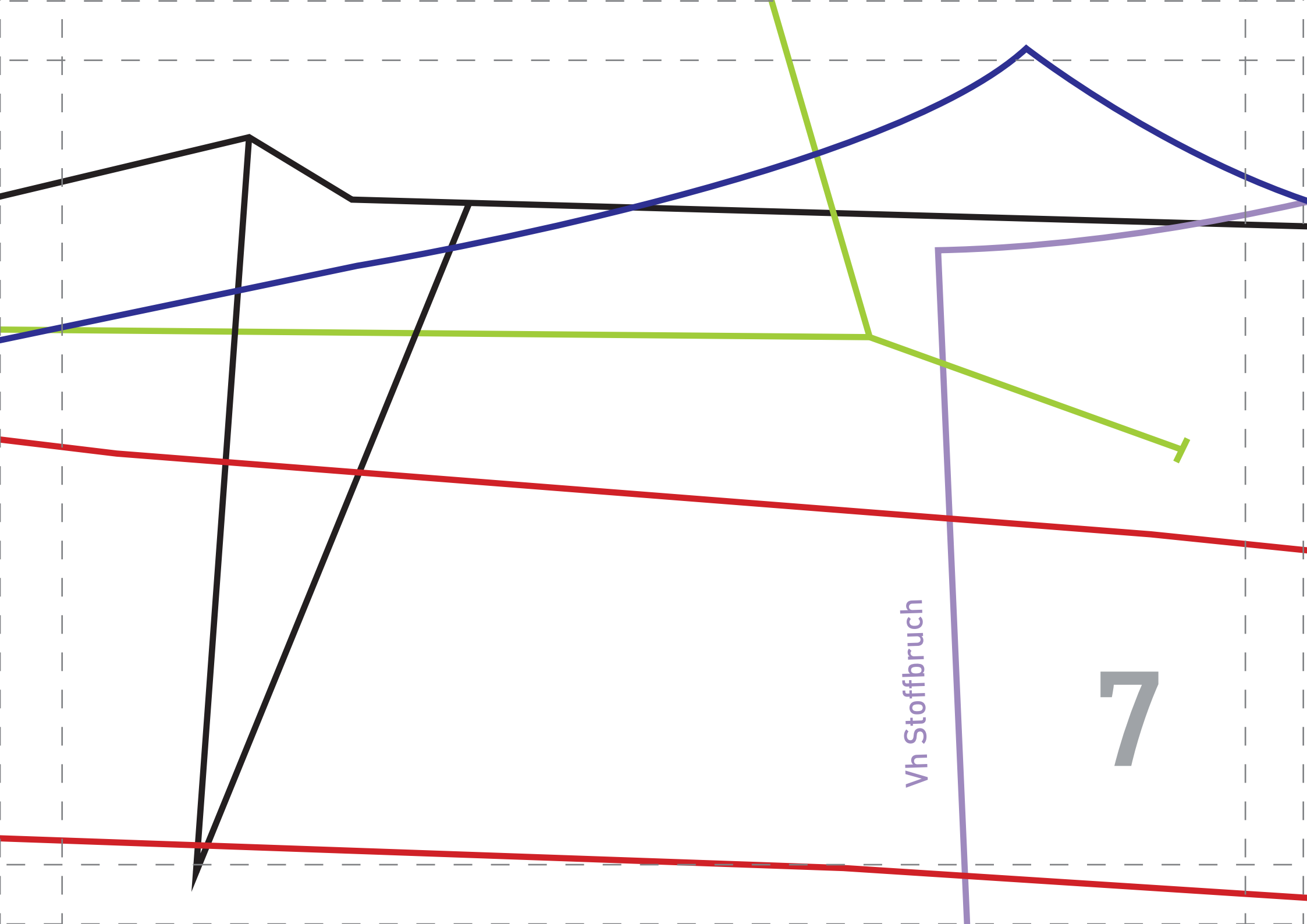
5



Biese

1

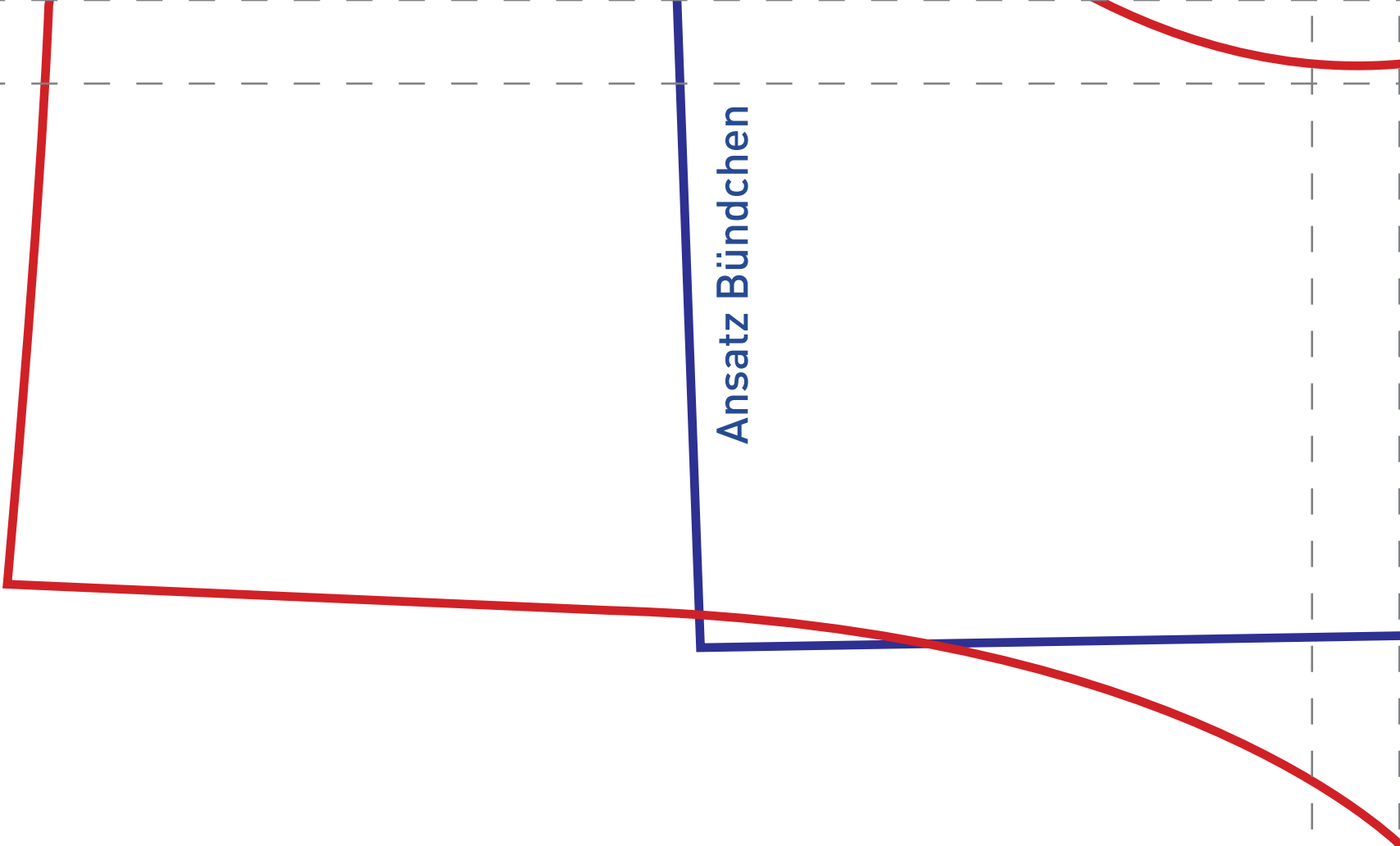
6



Vh Stoffbruch

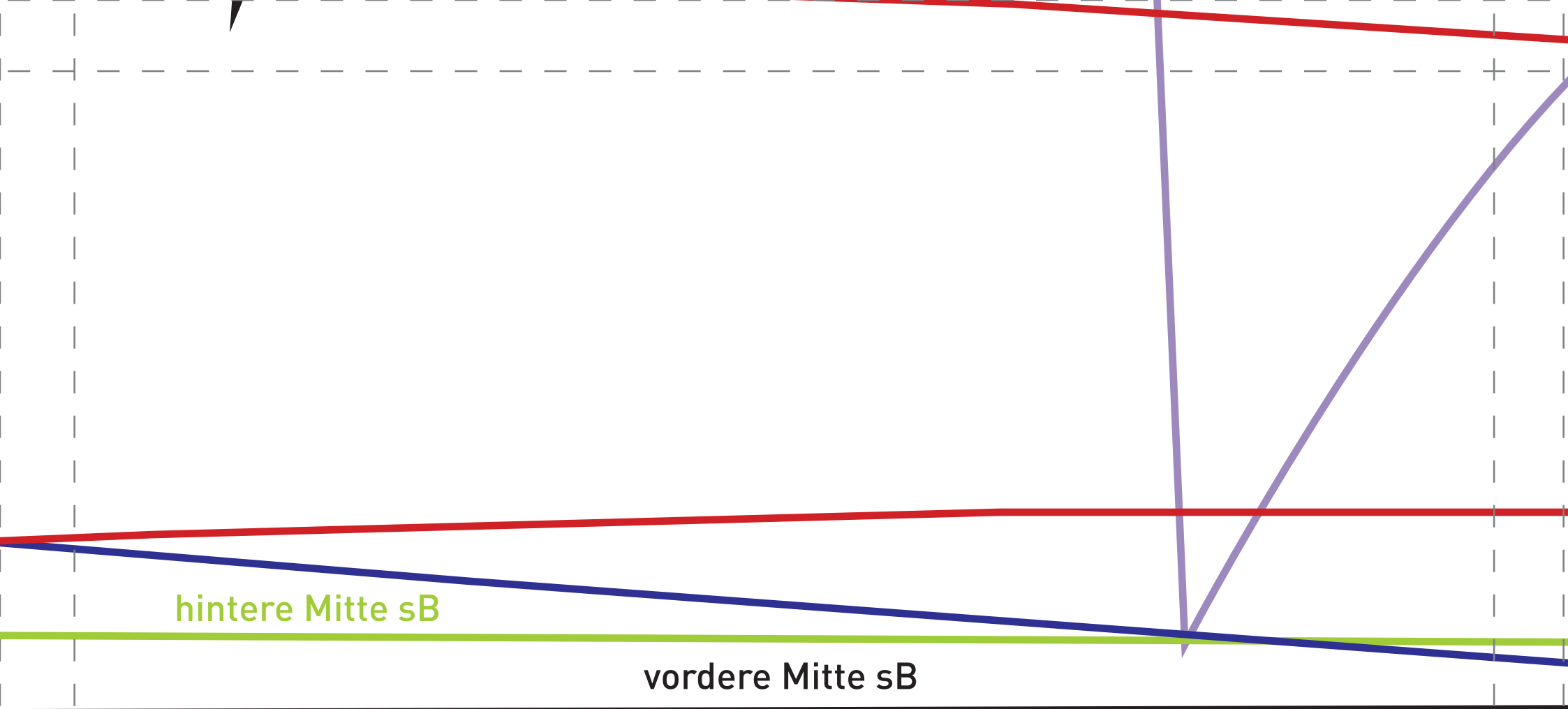
7

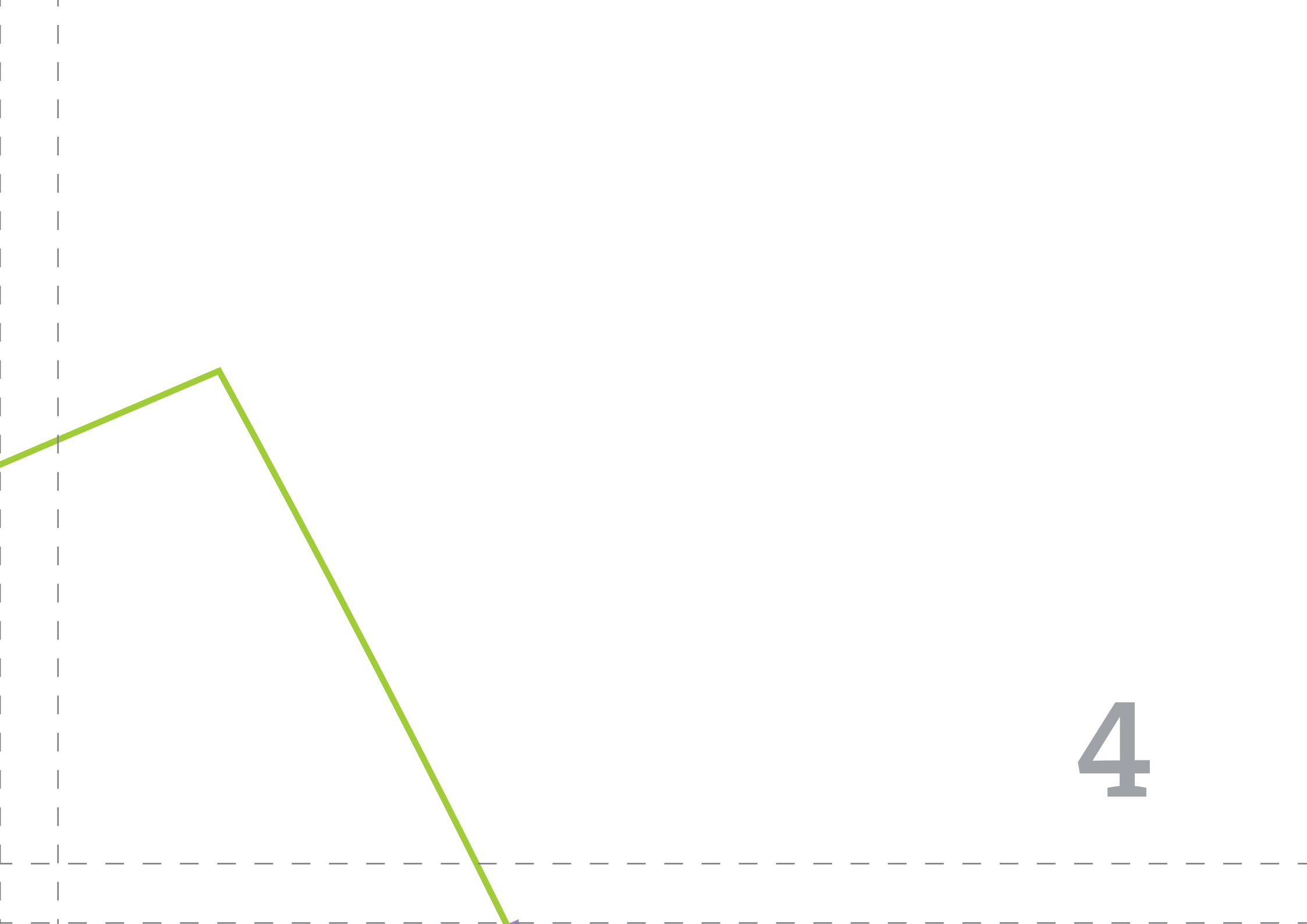
Ansatz Bündchen



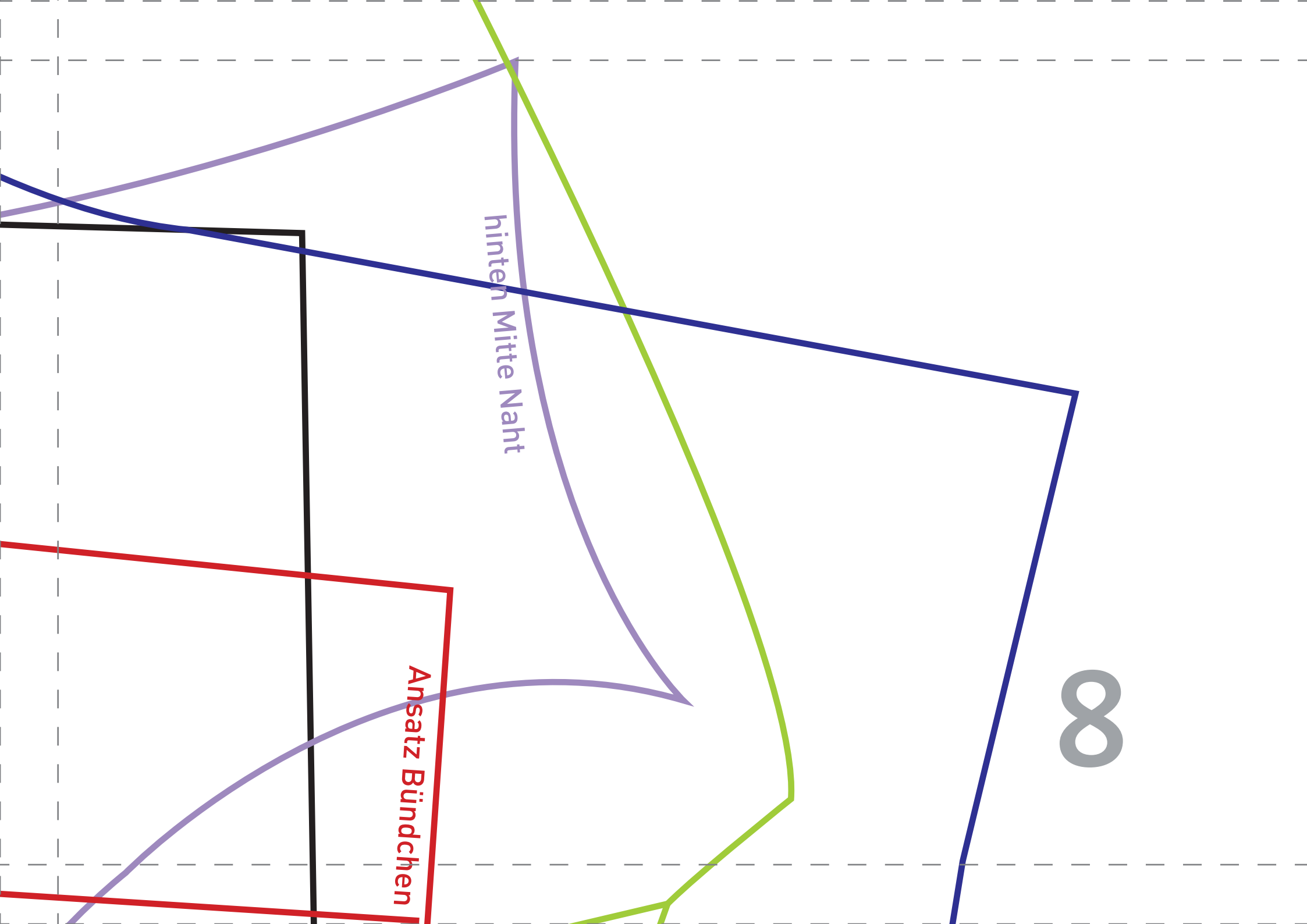


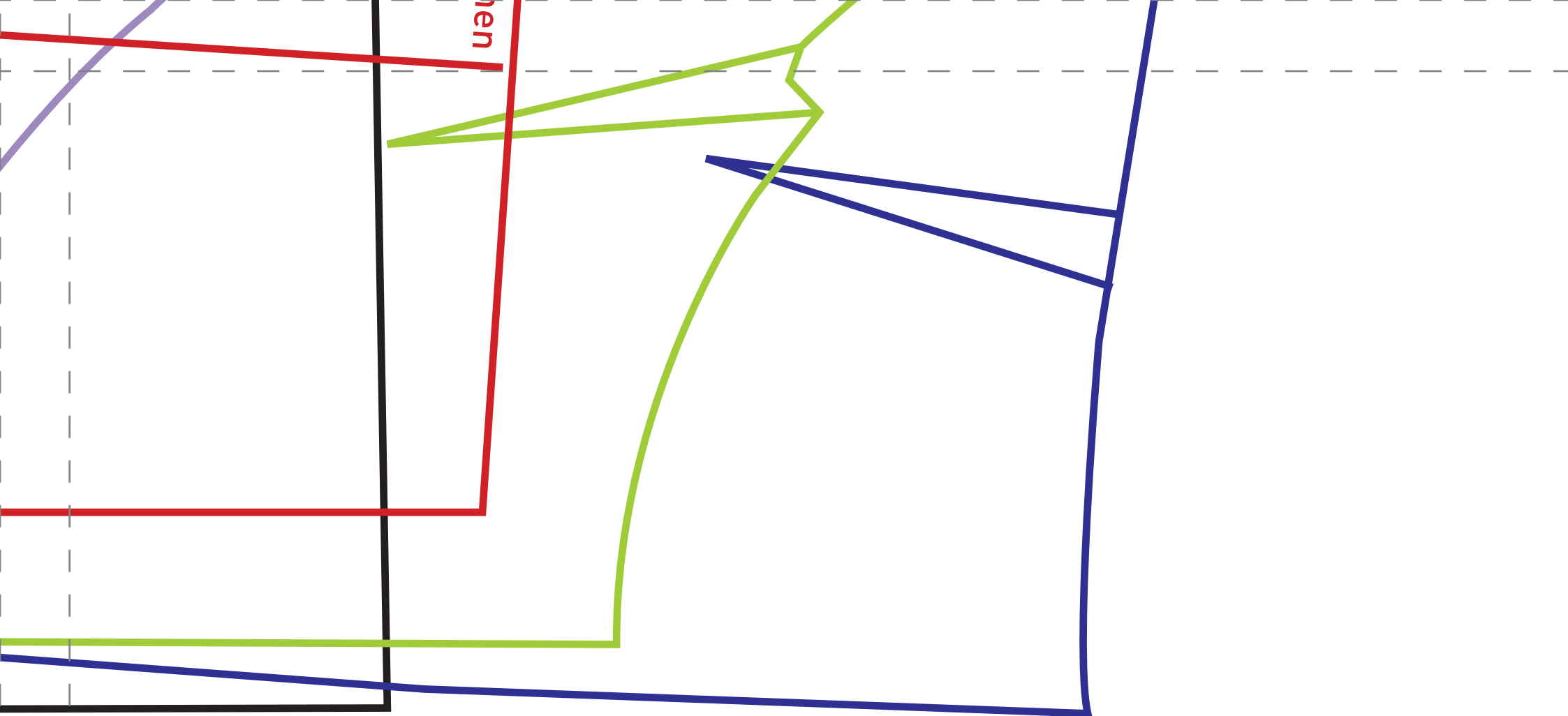
10





4





12