

TUTORIAL



TITLE

LIGHT GREEN TULLE GOWN

FROM THE FEATURE

water colour

SISTERMAG

N°25

SIZE 36EU – 10 UK – 8 US

MATERIALS

- » 1 m checked viscose
- » 0,35 m lining silk
- » 20 cm seam zipper
- » sequins in 7 different colours
- » 4,5 m pale green tulle
<http://bit.ly/29mAVbC>
- » 4,5 m applegreen tulle
<http://bit.ly/29n2T8a>
- » 0,35 m off white tulle
<http://bit.ly/29yZTXf>
- » 1 button

HOW-TO

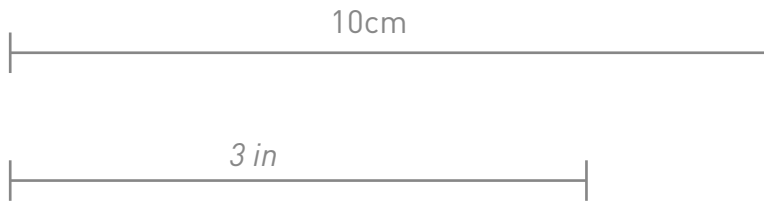
1. Sew the centre front piece onto the outer front pieces.
2. Finish the side seams.
3. Sew and turn over the straps and attach them to the front according to the pattern.
4. Put the lining together like the outer fabric.
5. Pin the two tops together, outside on outside, and sew the top edges together – leaving gaps open for the straps in the back.
6. Embroider a flower out of the sequins.
7. According to the pattern, stick the straps into the gaps and sew them in.
8. Put together and sew the pants.
9. Cut the tulle (*pale green 4,5 m x 0,65 m , 4,5 m x 0,8 m*) (*apple green 4,5 m x 0,67 m, 4,5 m x 0,78 m*) (*off white 1,2 m x 0,35 m*)
10. Drape and pin the tulle to the top's waistline. Start off with the long pieces, then add the short pieces – all lightly twisted around each other.
11. Sew on the tulle
12. Sew the pants onto the top's waistline
13. By hand, sew the lining onto the waistline on the inside invisibly.
14. Prepare the button hole and sew on the button



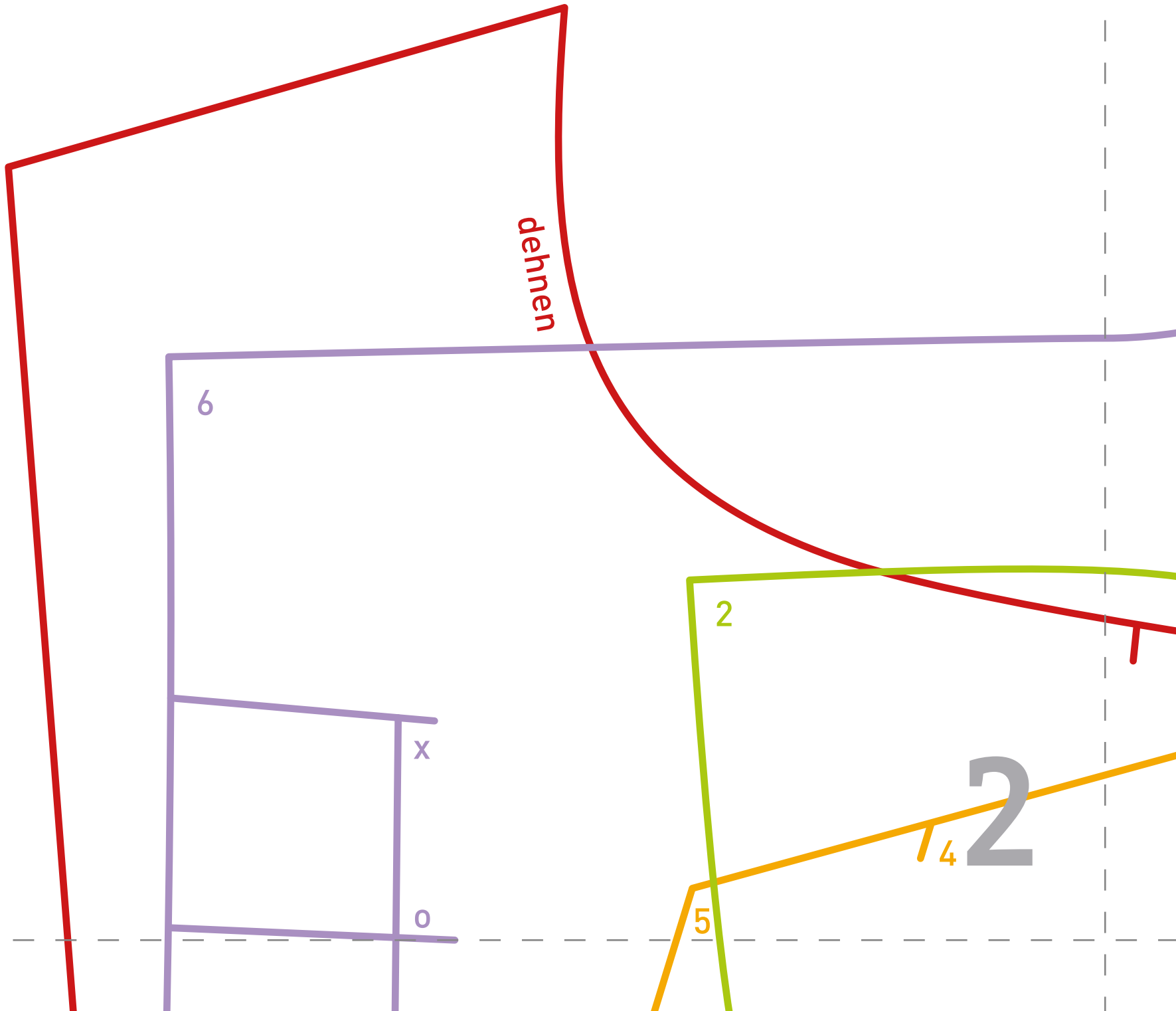
SCHNITTMUSTER - ÜBERSICHT

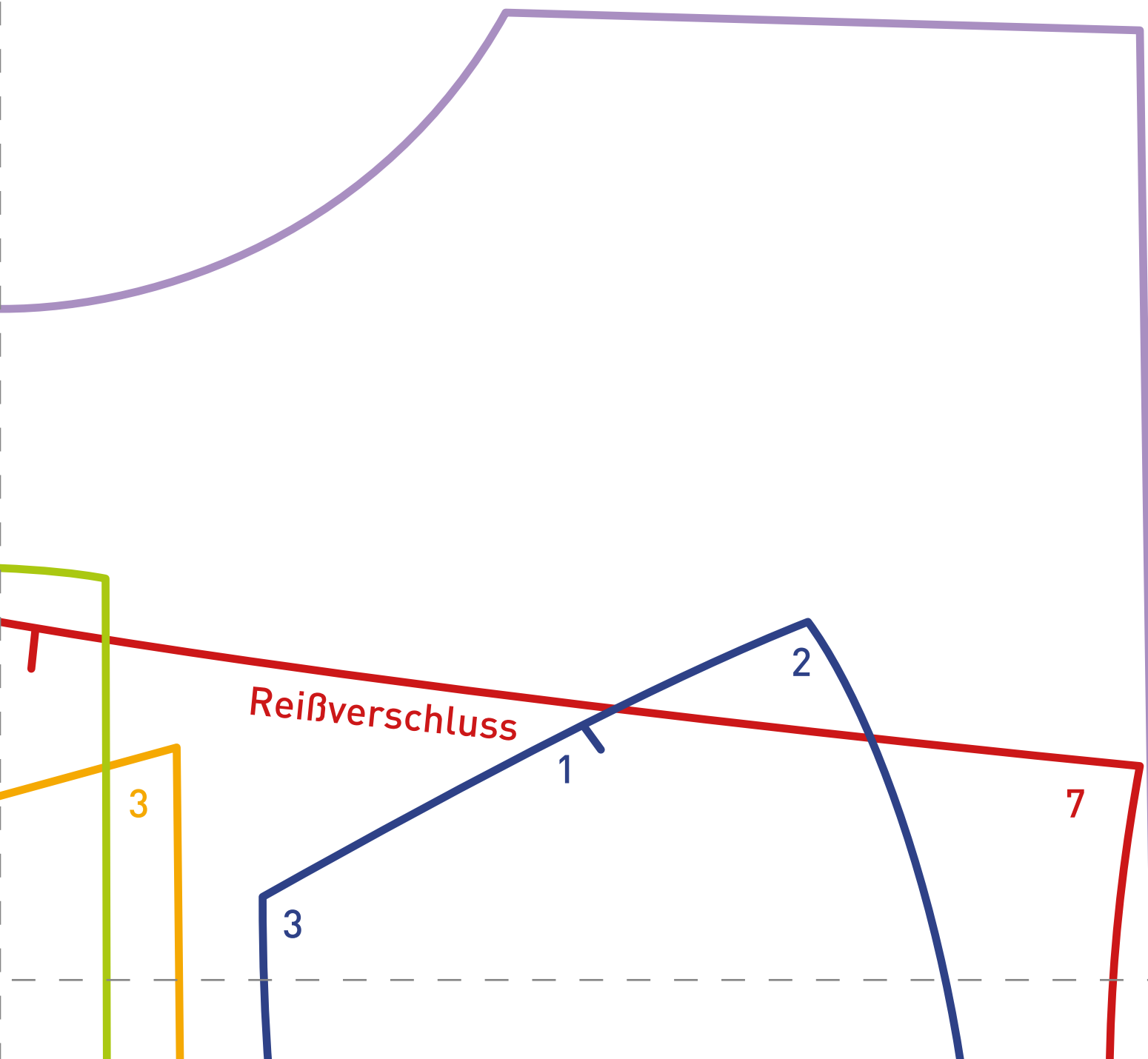
-  vorderes Hosenteil 2x / *front trousers panel 2x*
-  hinteres Hosenteil 2x / *back trousers panel 2x*
-  mittleres Vorderteil 1x im SB 1x Futter /
1x middle front panel 1x lining
-  seitliches Vorderteil 2x im SB 2x Futter/
2x lateral front panel 2x lining
-  Rückenteil 2x im SB 2x Futter/
2x back panel 2x lining
-  Träger 2x / *strap 2x*





- vorderes Hosenteil 2x / *front trousers panel 2x*
- hinteres Hosenteil 2x / *back trousers panel 2x*
- mittleres Vorderteil 1x im SB 1x Futter / *1x middle front panel 1x lining*
- seitliches Vorderteil 2x im SB 2x Futter/ *2x lateral front panel 2x lining*
- Rückenteil 2x im SB 2x Futter/ *2x back panel 2x lining*
- Träger 2x / *strap 2x*





Reißverschluss

1

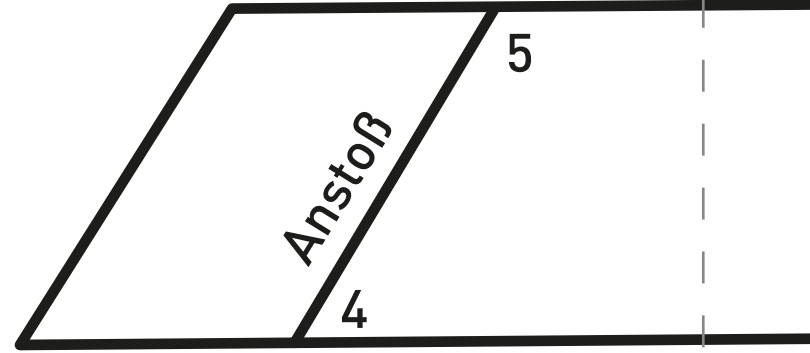
2

7

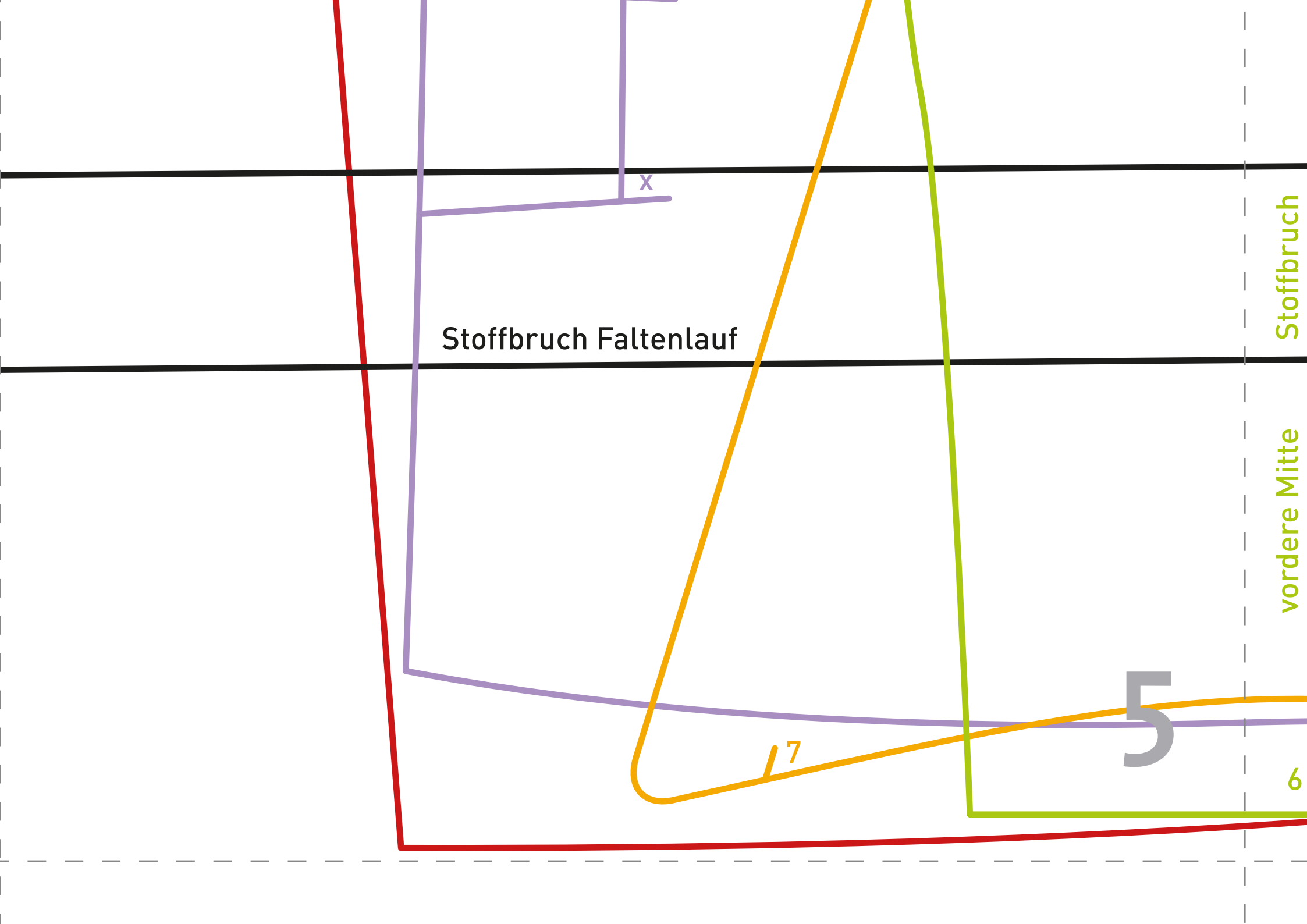
3

3

3



4



Stoffbruch Faltenlauf

x

7

5

6

Stoffbruch

vordere Mitte

