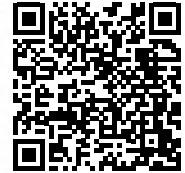


## TUTORIAL



TITLE

### LIGHT BLUE BALL GOWN

FROM THE FEATURE

water colour

SISTERMAG

N°25

SIZE 38EU - 12 UK - 10 US

### MATERIALS

- » 3 m heavy decor fabric (bought at [Stoffmarkt-holland](http://Stoffmarkt-holland))
- » 50 cm seam zipper
- » 50 cm untreated cotton
- » embroidery pearls
- » bodice bone <http://bit.ly/29qiumU>
- » inlay to iron on

### HOW-TO

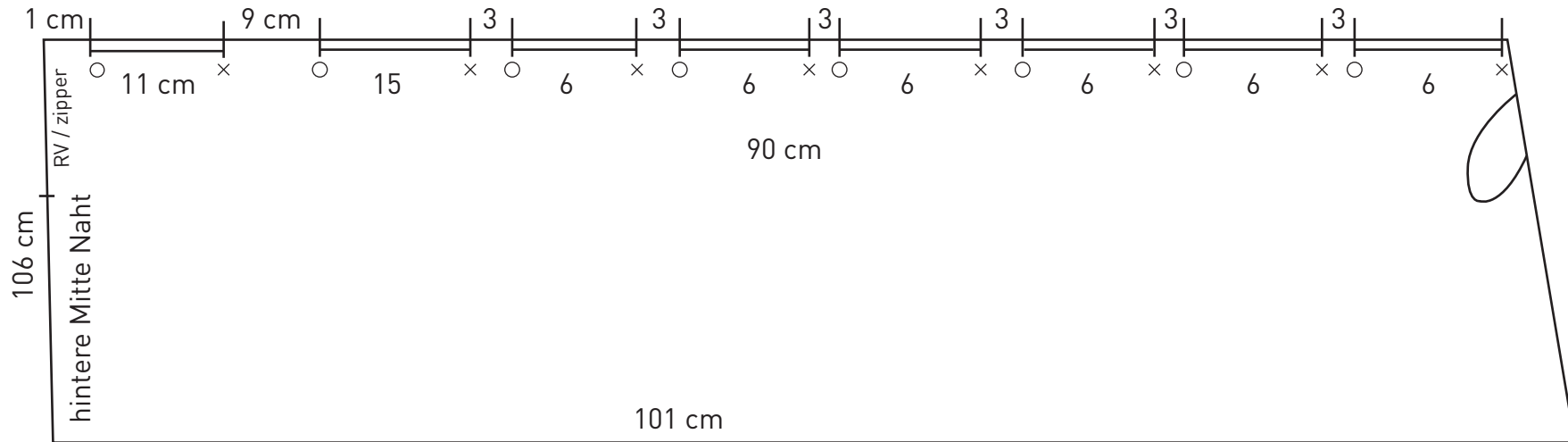
1. Iron the inlays into the bodice pieces and sew together – pay attention to the numbers on the pattern.
2. Embroider the bodice with pearls.
3. Cut and sew another bodice out of the untreated cotton, leave tunnels for the bodice bones.
4. Sew the bodice and lining together at the top and insert the bones.
5. Sew the skirt pieces together and make seam pockets.
6. Pleat the skirt.
7. Attach the skirt to the bodice.
8. Insert the zipper.
9. On the inside, sew on the untreated cotton bodice invisibly by hand.
10. Finish the dress seams.

# Der Rock // The Skirt

Rückwärtige Rockbahn  
Back skirt panel

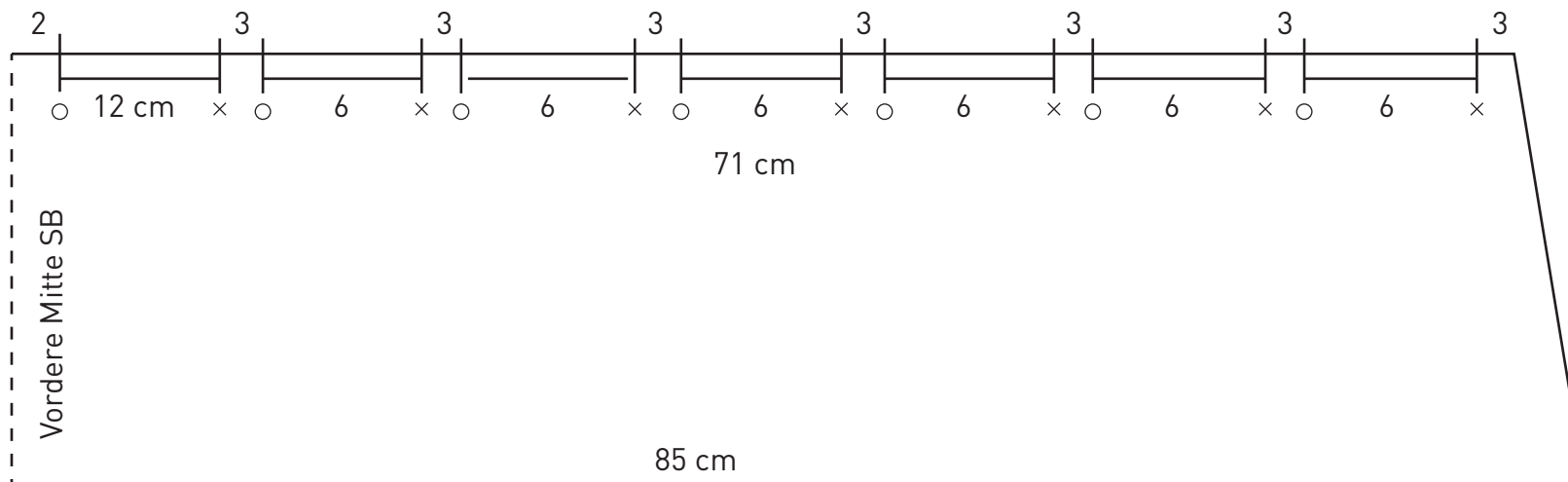
2x zuschneiden  
Cut out two times

Dies ist nur ein Schema – NICHT maßstabsgetreu!  
This is only a scheme/diagram – not true to scale!



Vordere Rockbahn  
Front skirt panel

1x im Stoffbruch zuschneiden  
Cut out once in the fold





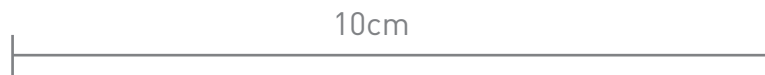
## SCHNITTMUSTER - ÜBERSICHT





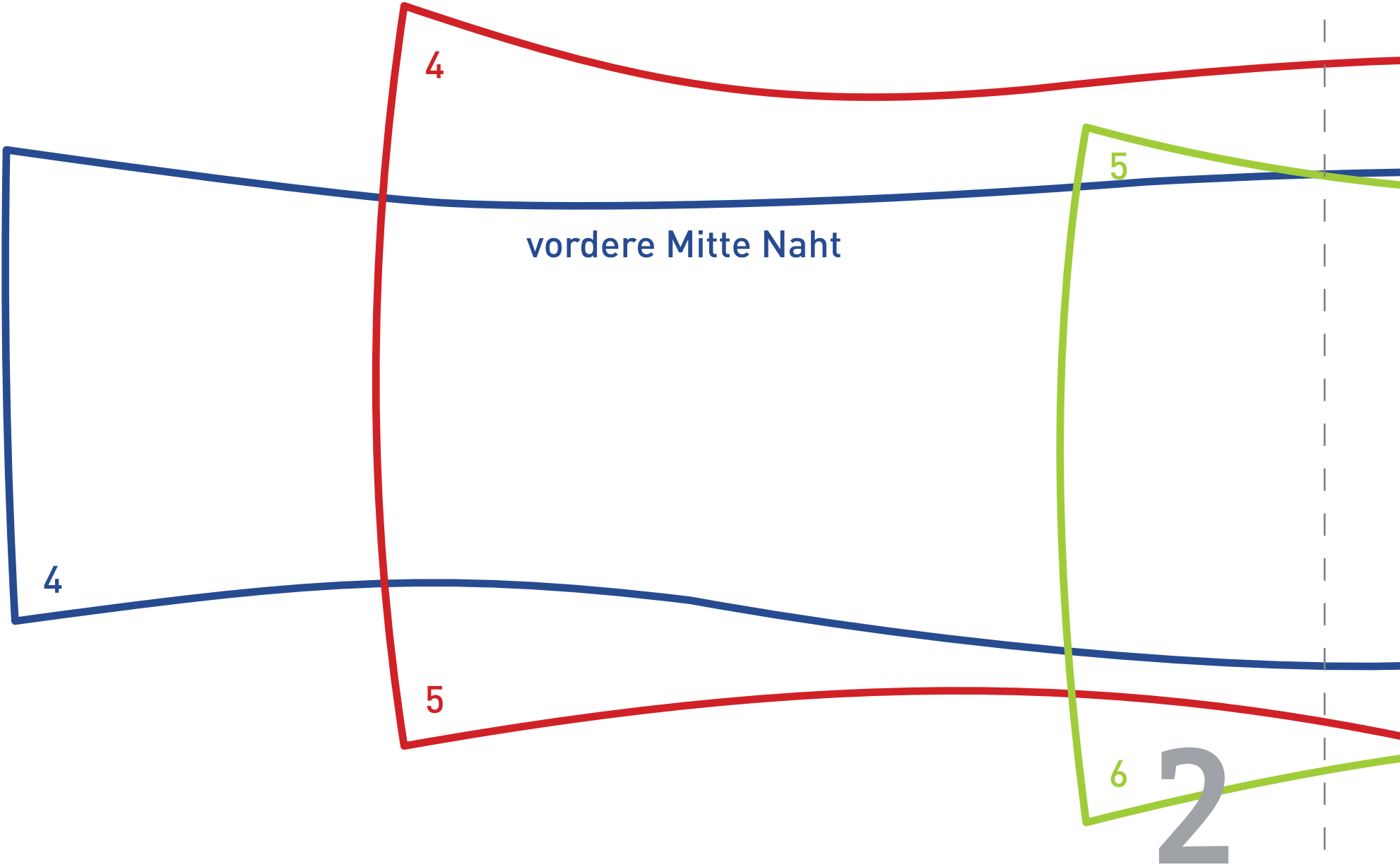
Ballkleid, hellblau / *light blue ball gown*

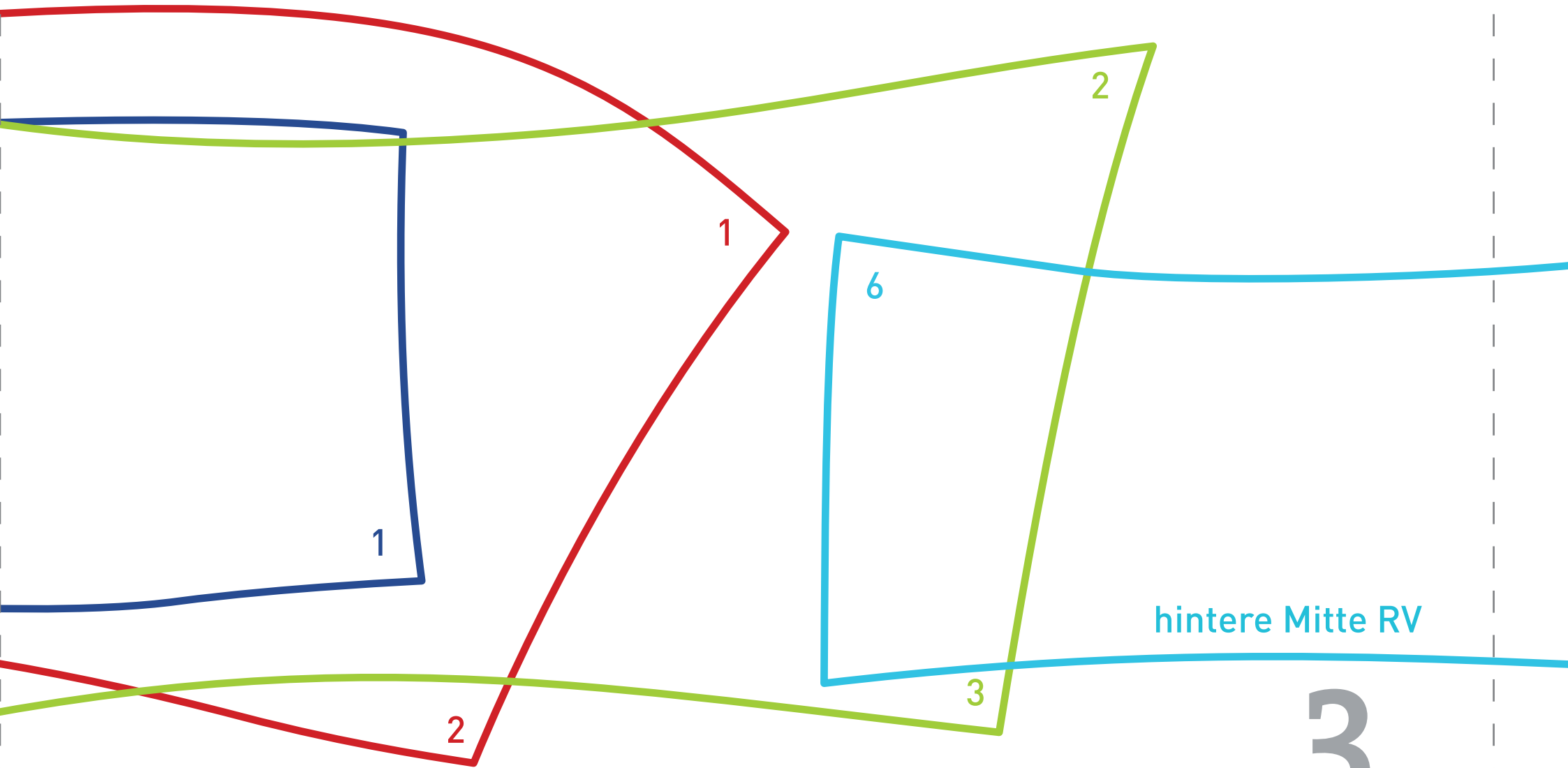
Ausgabe 25 // *Issue 25* 07 - 16



- mittleres Vorderteil 2x / *middle front panel 2x*
- seitliches Vorderteil 2x / *lateral front panel 2x*
- seitliches Rückenteil 2x / *lateral back panel 2x*
- mittleres Rückenteil 2x / *middle back panel 2x*

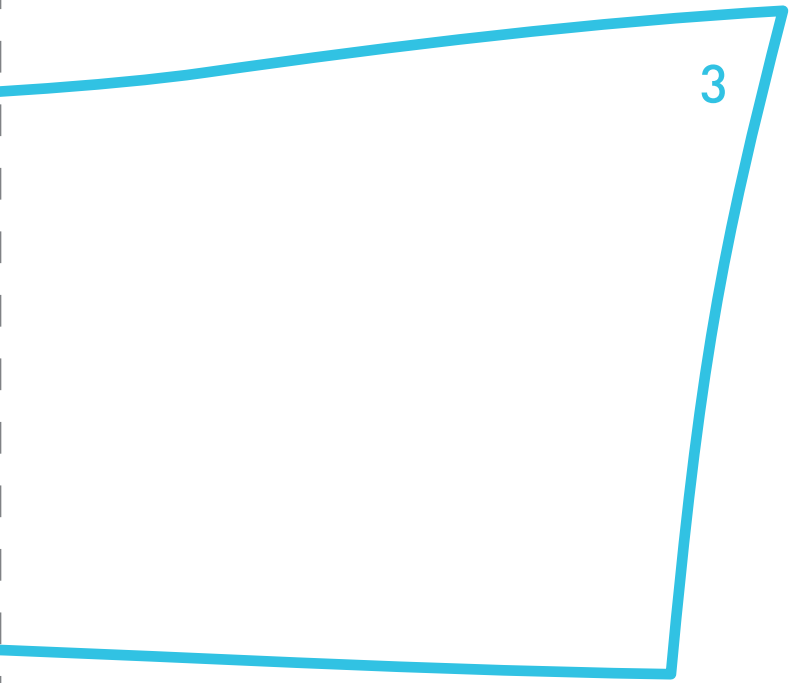
1





hintere Mitte RV

3



4