



TUTORIAL



TITLE

BROWN MILITARY BLOUSE

FROM THE FEATURE

Spring Fashion - from 10 to 20°C

SISTERMAG

N°18

MATERIALS

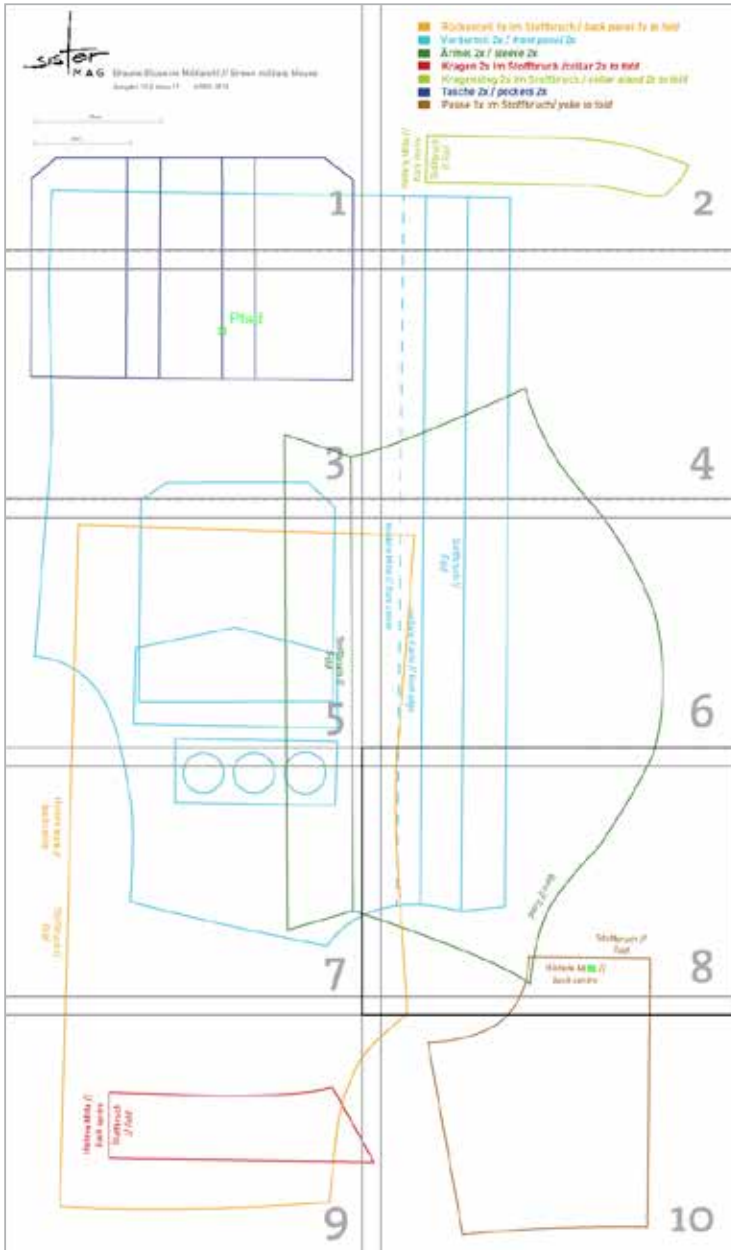
- » 1,2 m Cotton Poplin
- » 10 Buttons
- » Interfacing
- » Rhinestones

HOW-TO

1. Turn over and stitch pocket flaps, epaulettes (12x4 cm)
2. Drape the crease of pocket, stitch and iron edges
3. Cut strip of fabric for embellishments and press edges, embellish with rhinestones
4. Sew collar <http://bit.ly/1D93Nei>
5. Close shoulder seams
6. Put epaulettes on shoulder seams and stitch edge
7. Sew on sleeves
8. Close side and sleeve seams
9. Press and stitch sleeve hemlines
10. Press and stitch front edge
11. Place and stitch pockets and pocket flaps
12. Stitch embellishments
13. Sew collar
14. Turn up and sew lower edge
15. Sew button holes and sew on buttons



PATTERN - OVERVIEW



- Back Part (1x in fold)
- Front Part (2x)
- Sleeves (2x)
- Collar (2x in fold)
- Collar stand (2x in fold)
- Pocket (2x)
- Yoke (1x in fold)

sister
MAG

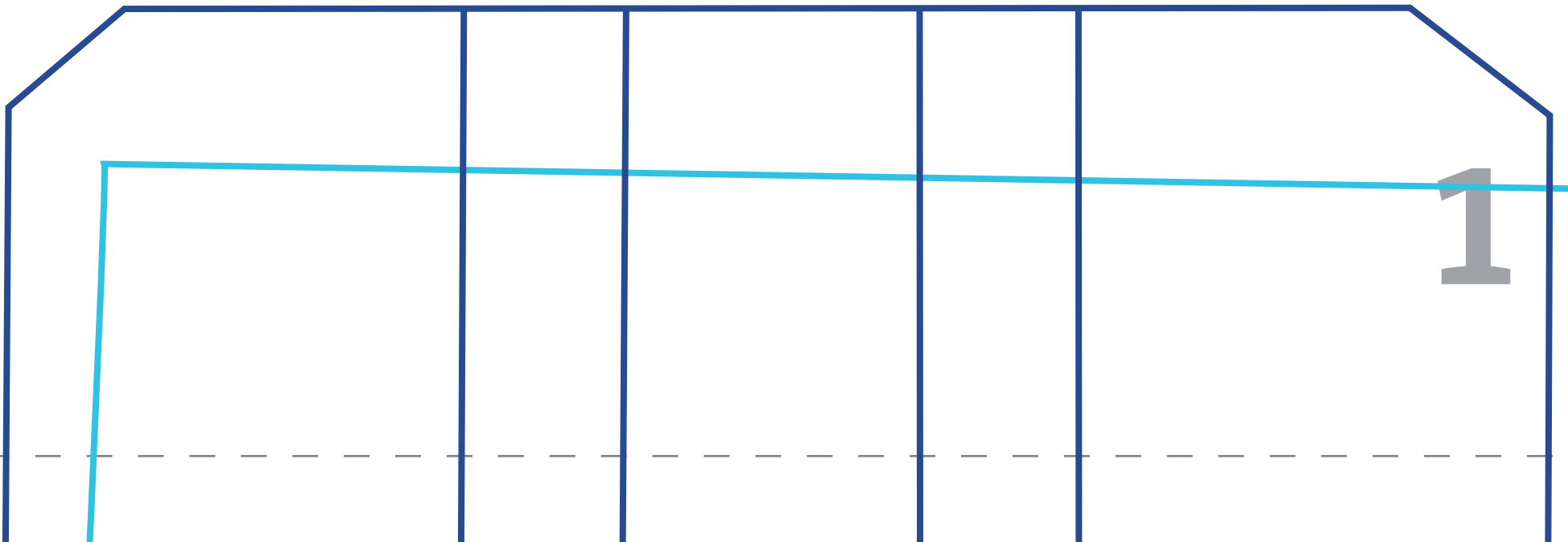
Braune Bluse im Militärstil // Brown military blouse

Ausgabe 18 // Issue 18

APRIL 2015

10cm

3 in

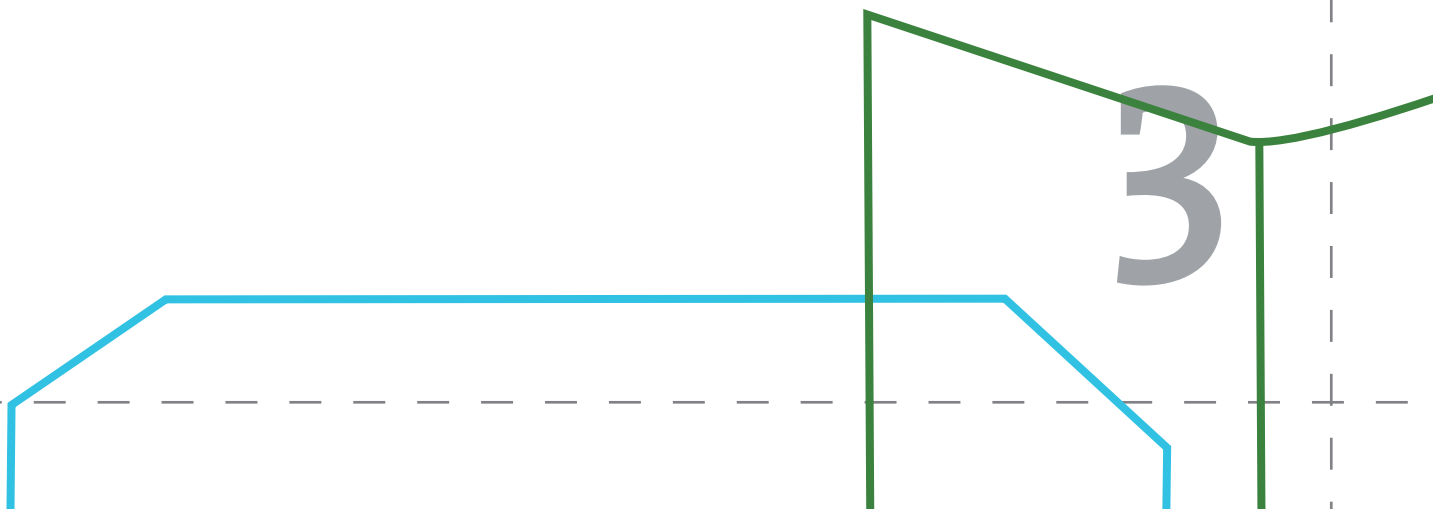
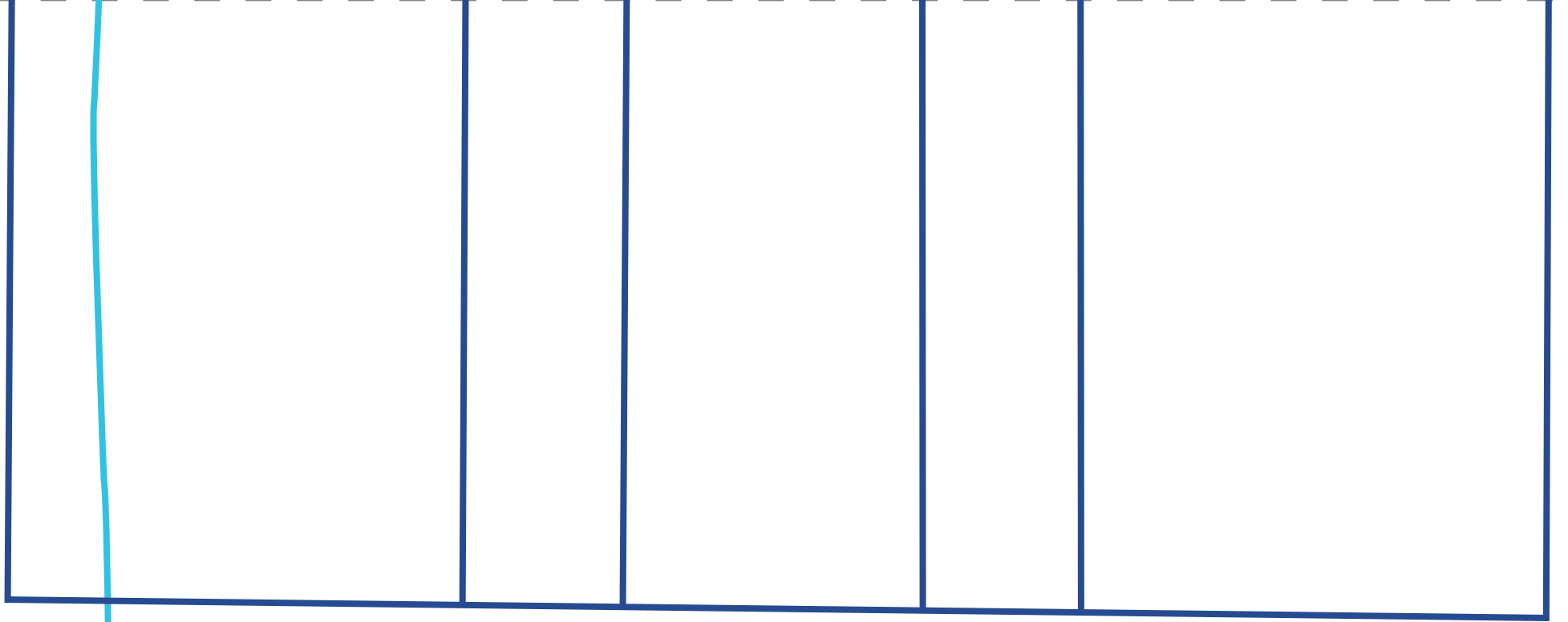


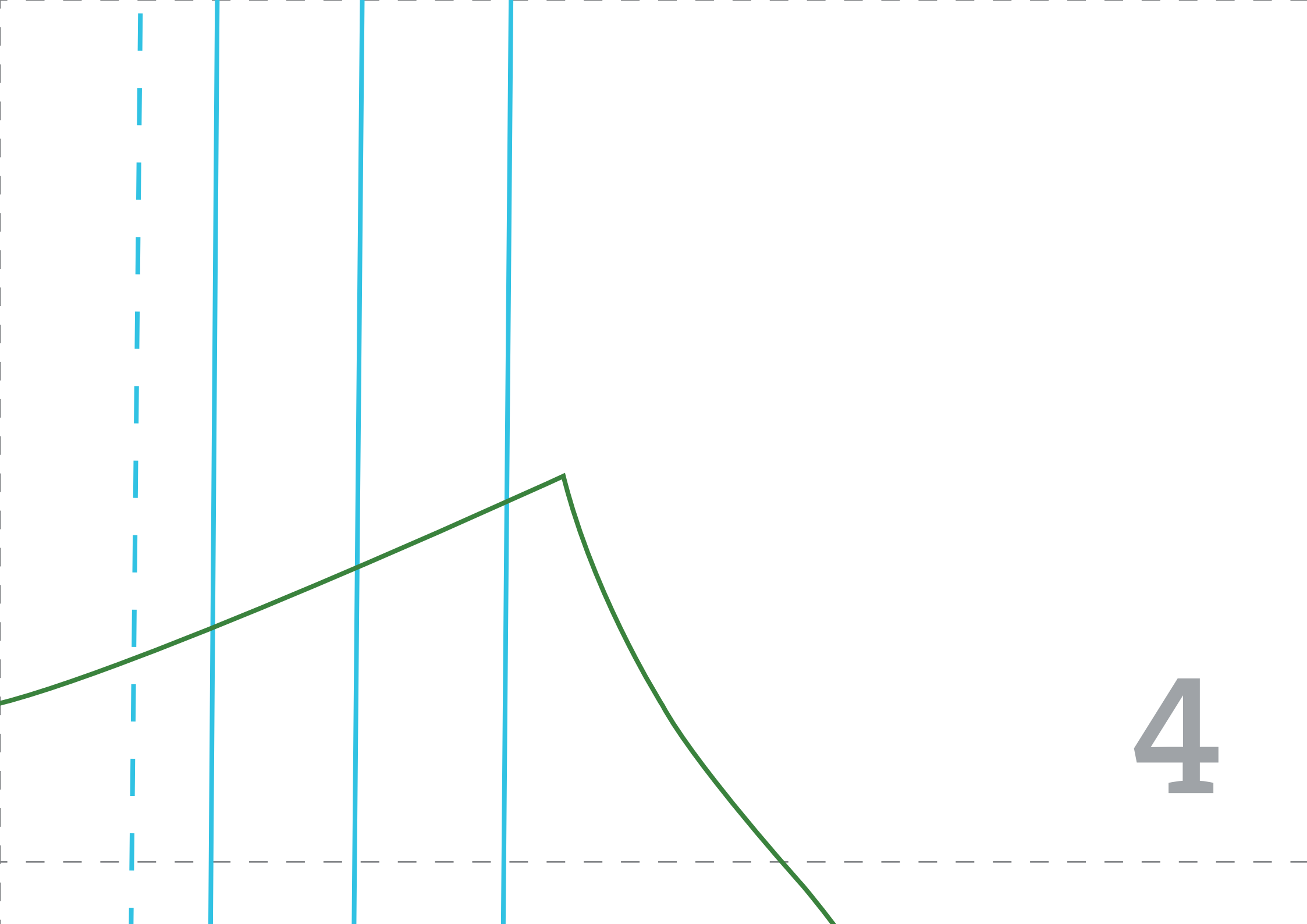
- Rückenteil 1x im Stoffbruch / *back panel 1x to fold*
- Vorderteil 2x / *front panel 2x*
- Ärmel 2x / *sleeve 2x*
- Kragen 2x im Stoffbruch / *collar 2x to fold*
- Kragensteg 2x im Stoffbruch / *collar stand 2x to fold*
- Tasche 2x / *pockets 2x*
- Passe 1x im Stoffbruch / *yoke to fold*

Hintere Mitte //
back centre

Stoffbruch
// Fold

2

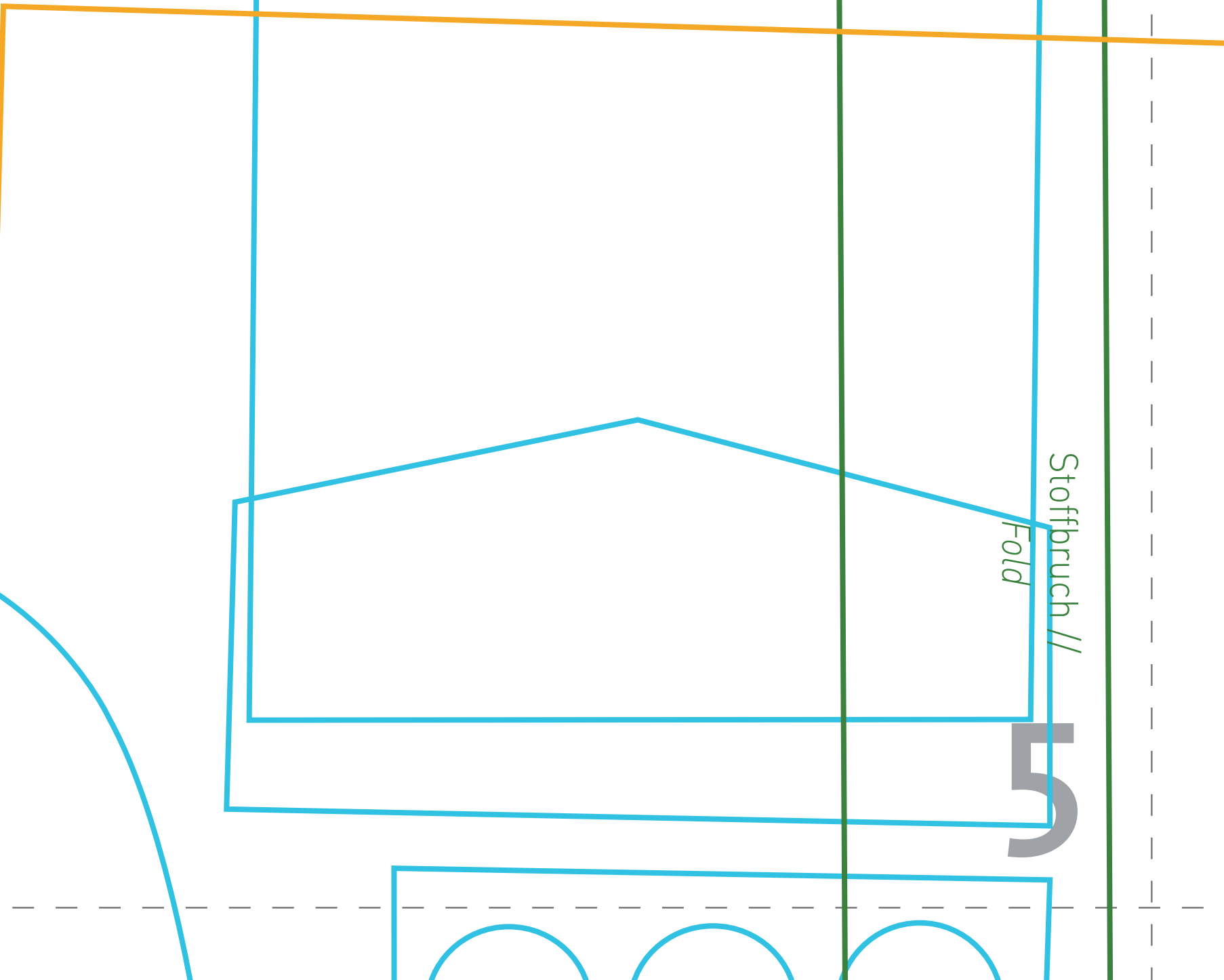
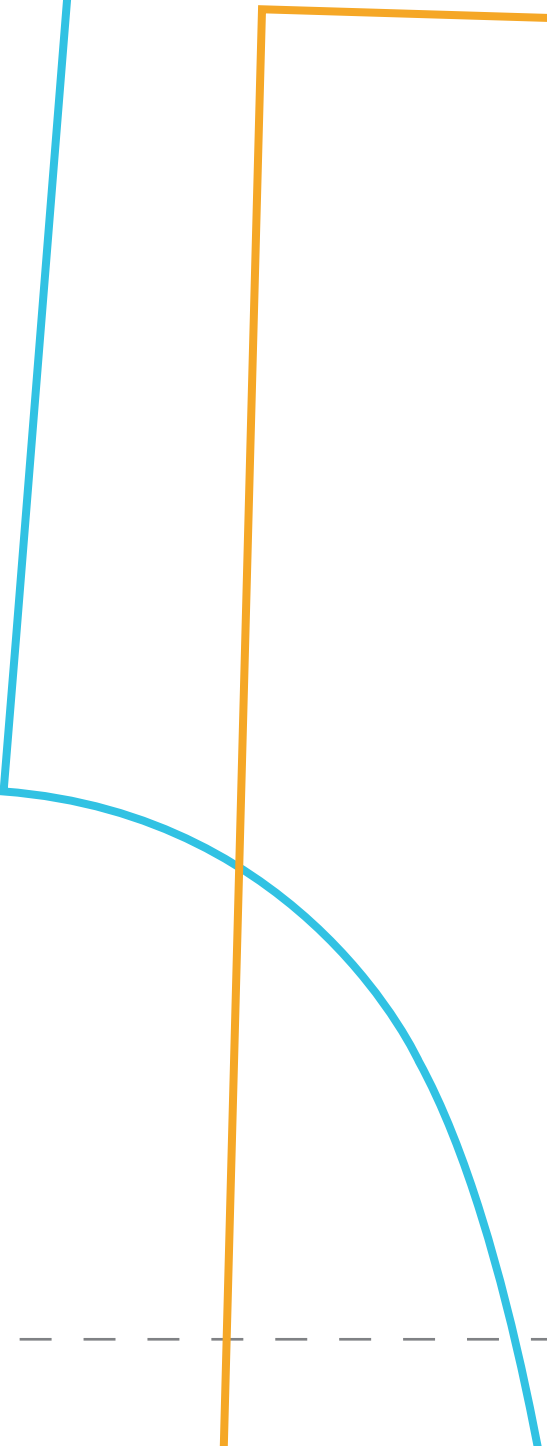
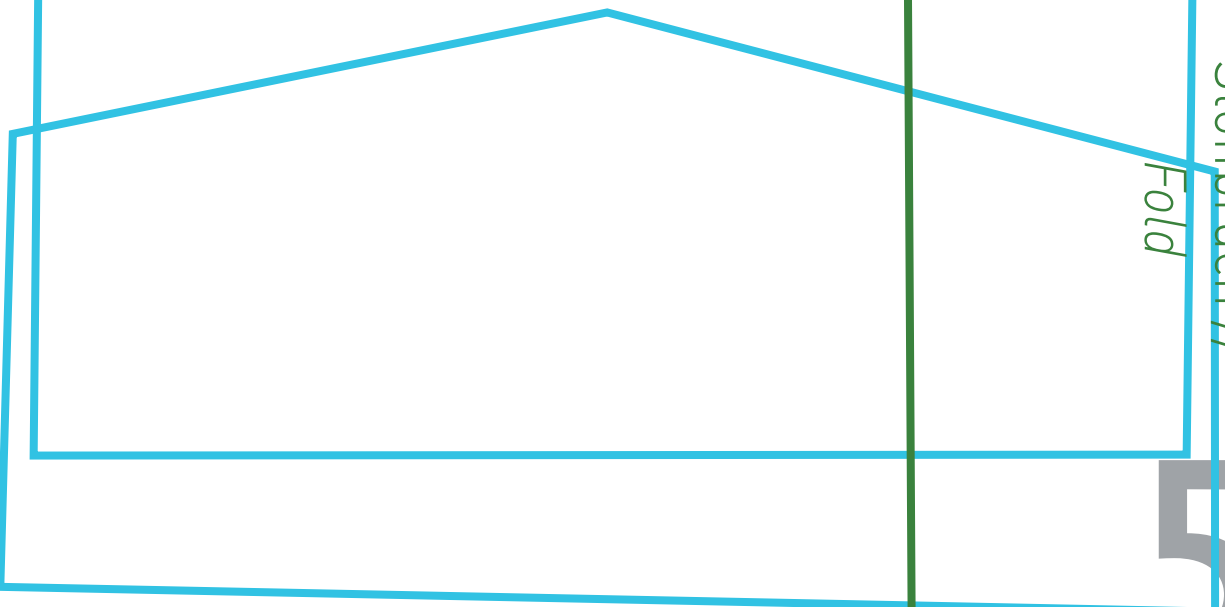
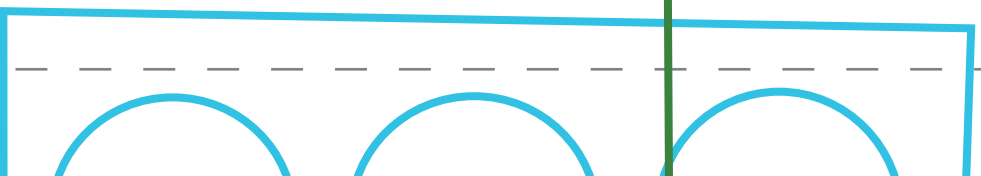




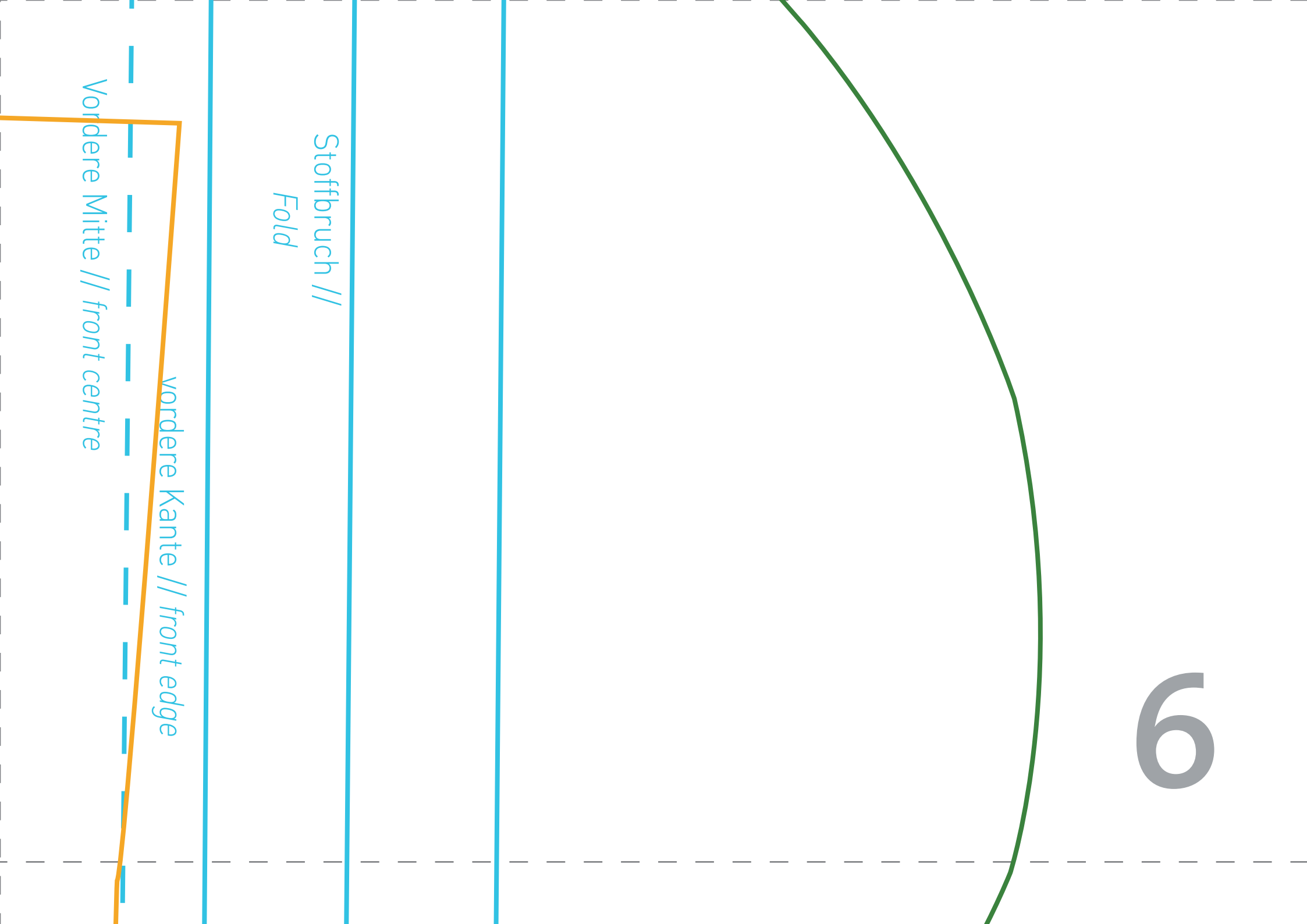
4

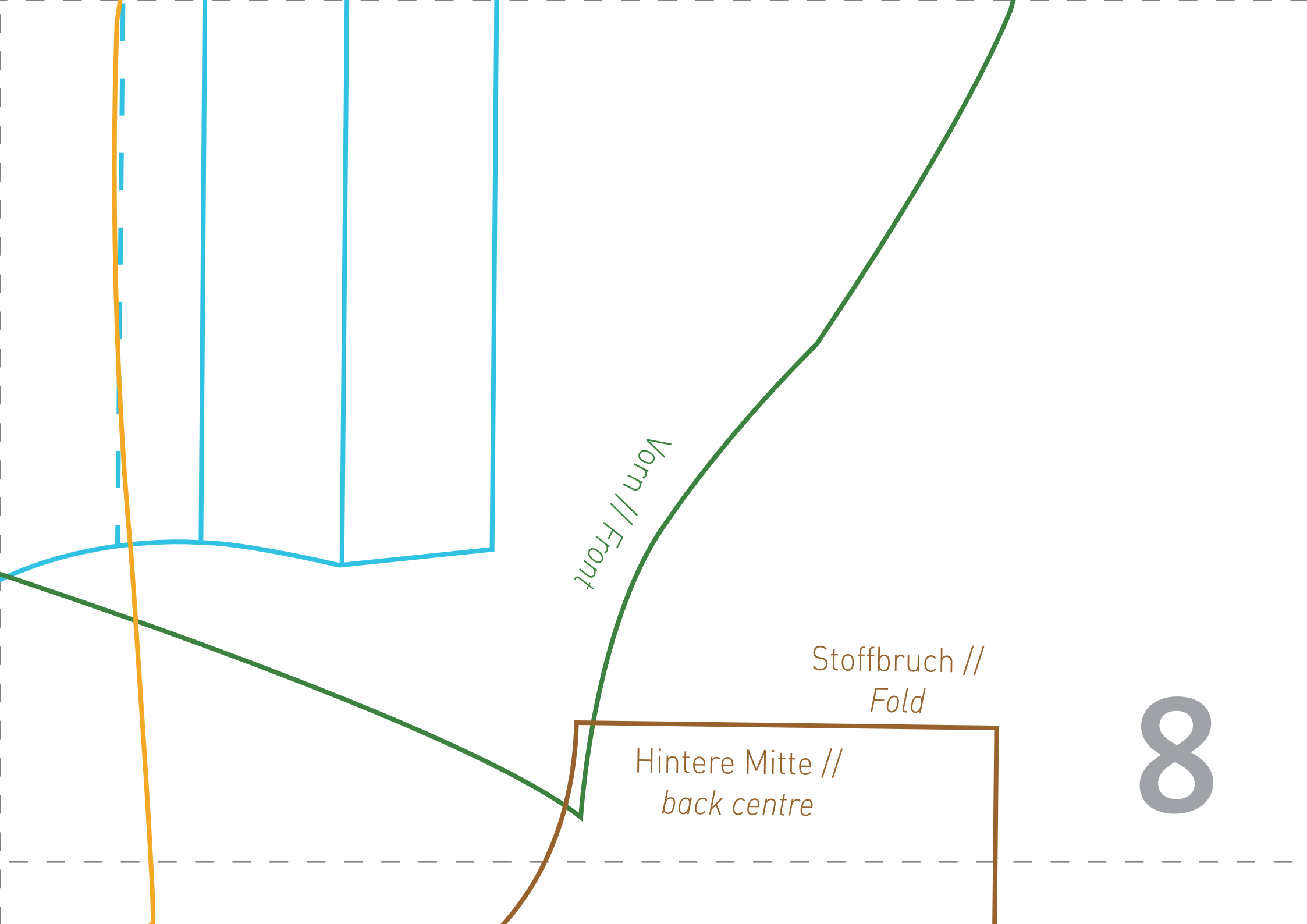
Stoffbruch //
Fold

5



6

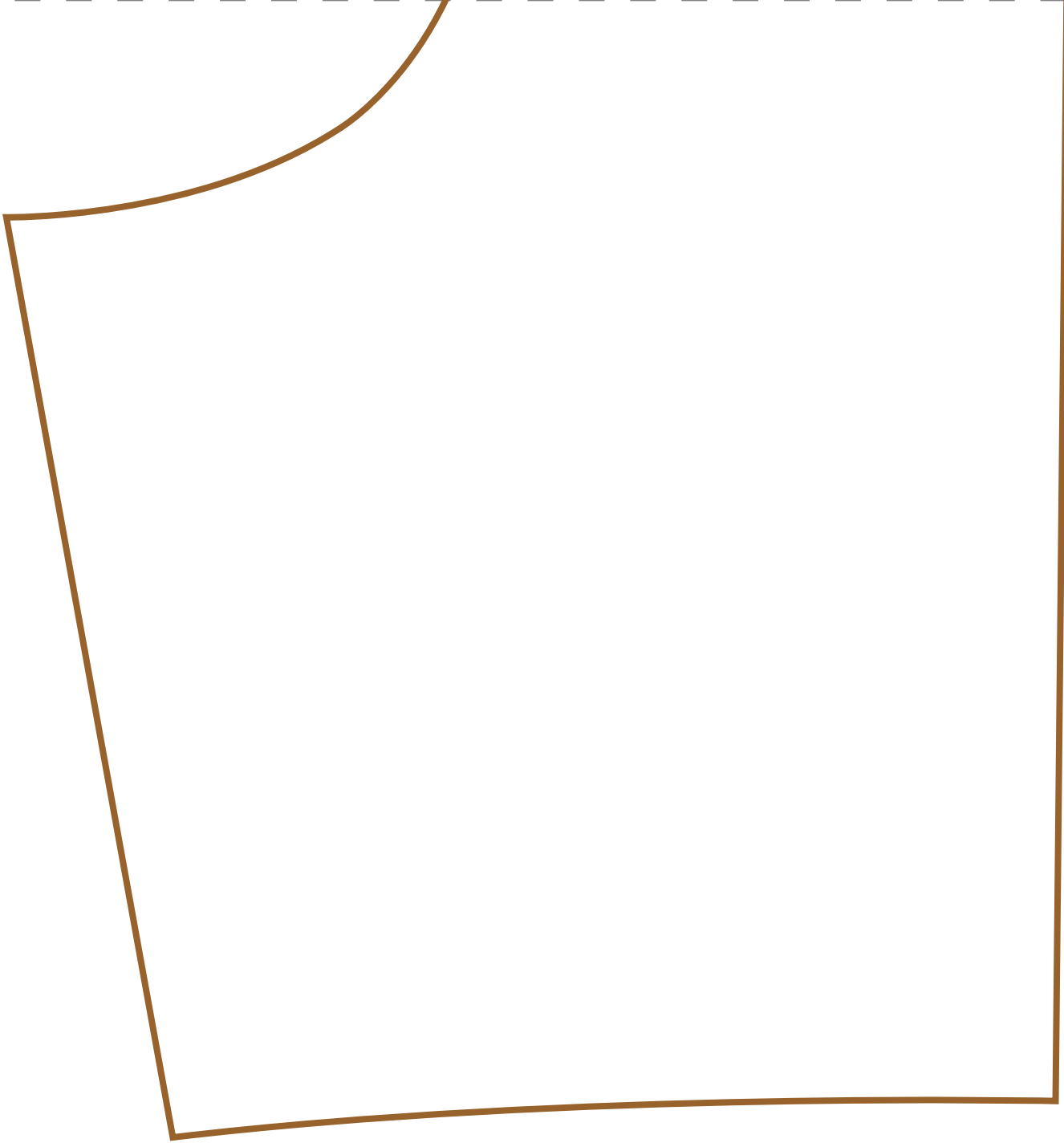




Hintere Mitte //
back centre

Stoffbruch
// *Fold*

9



10