



TUTORIAL



TITLE

BLACK CROPPED BLAZER

FROM THE FEATURE

Business Fashion

SISTERMAG

N°17

SIZE 10 UK/8 US/38 EU

MATERIALS

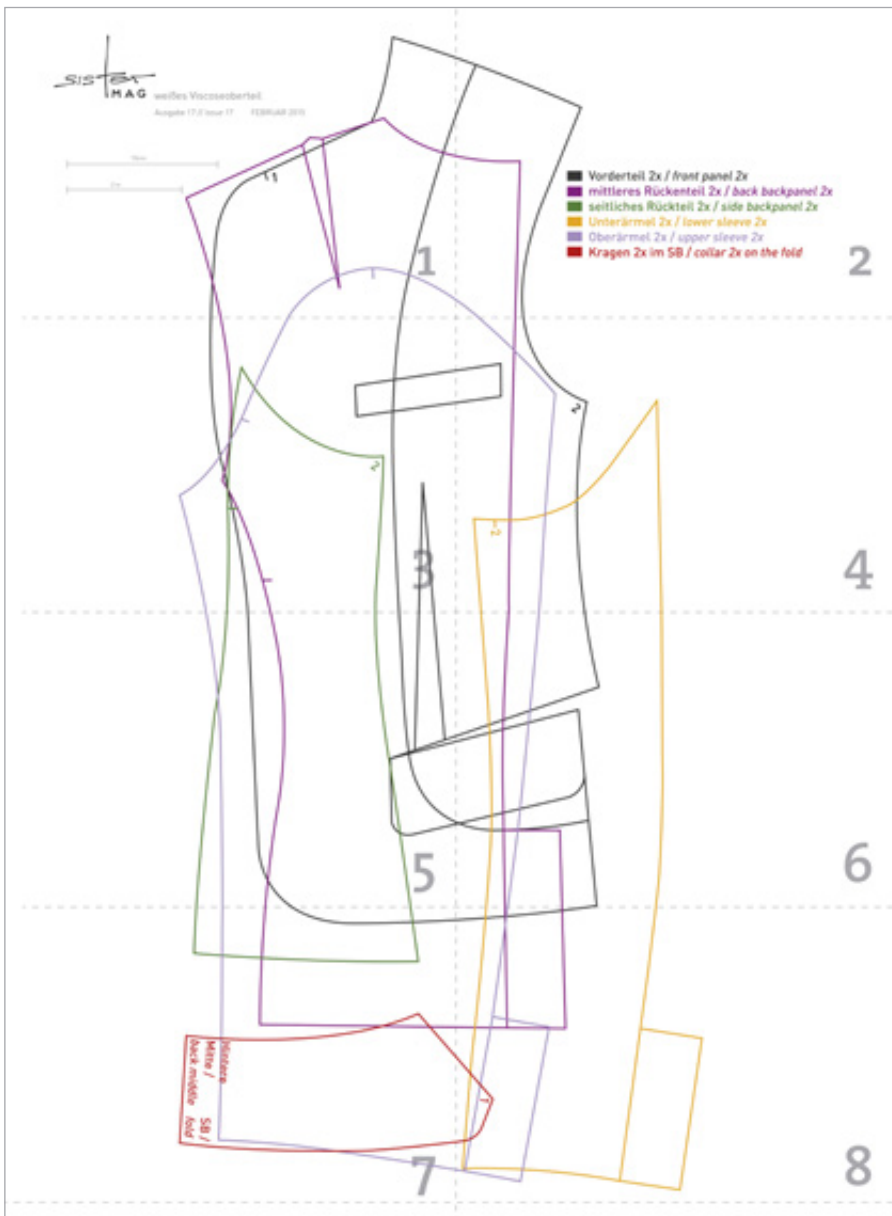
- » 1.3 m/4.3ft black new wool
- » 1 m/3.2ft lining silk
- » 9 buttons
- » Interfacing

HOW-TO

1. Sew darts in front pieces
2. Sew back sides to front pieces
3. Work flap pockets
4. Sew piped pocket on left front piece
5. Close back seam
6. Sew side pieces to middle back part
7. Close shoulder seams
8. Sew sleeve seams working sleeve slits
9. Sew on sleeves
10. Sew under collar to neck
11. Re-inforce front facing and upper collar with interfacing
12. Sew lining jacket and sew on to neck facing
13. Turn over lining jacket and outer jacket
14. Sew in shoulder pads
15. Hem sleeves
16. Hem jacket sewing in back slit
17. Sew button holes
18. Sew on buttons



PATTERN - OVERVIEW



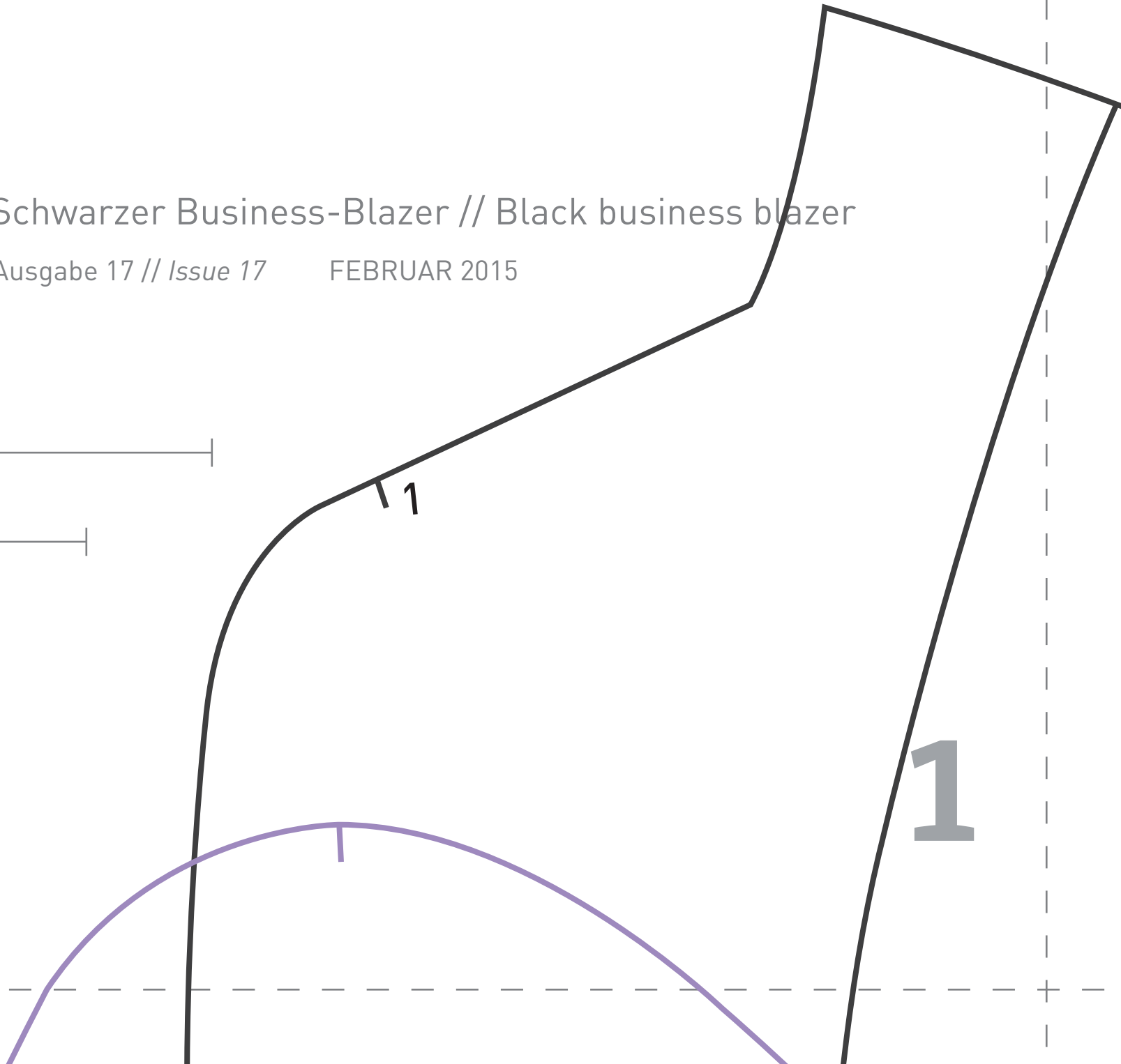
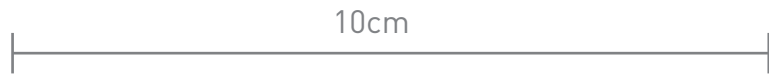
- Vorderteil 2x / front panel 2x
- mittleres Rückenteil 2x / back backpanel 2x
- seitliches Rückenteil 2x / side backpanel 2x
- Unterärmel 2x / lower sleeve 2x
- Oberärmel 2x / upper sleeve 2x
- Kragen 2x im SB / collar 2x on the fold

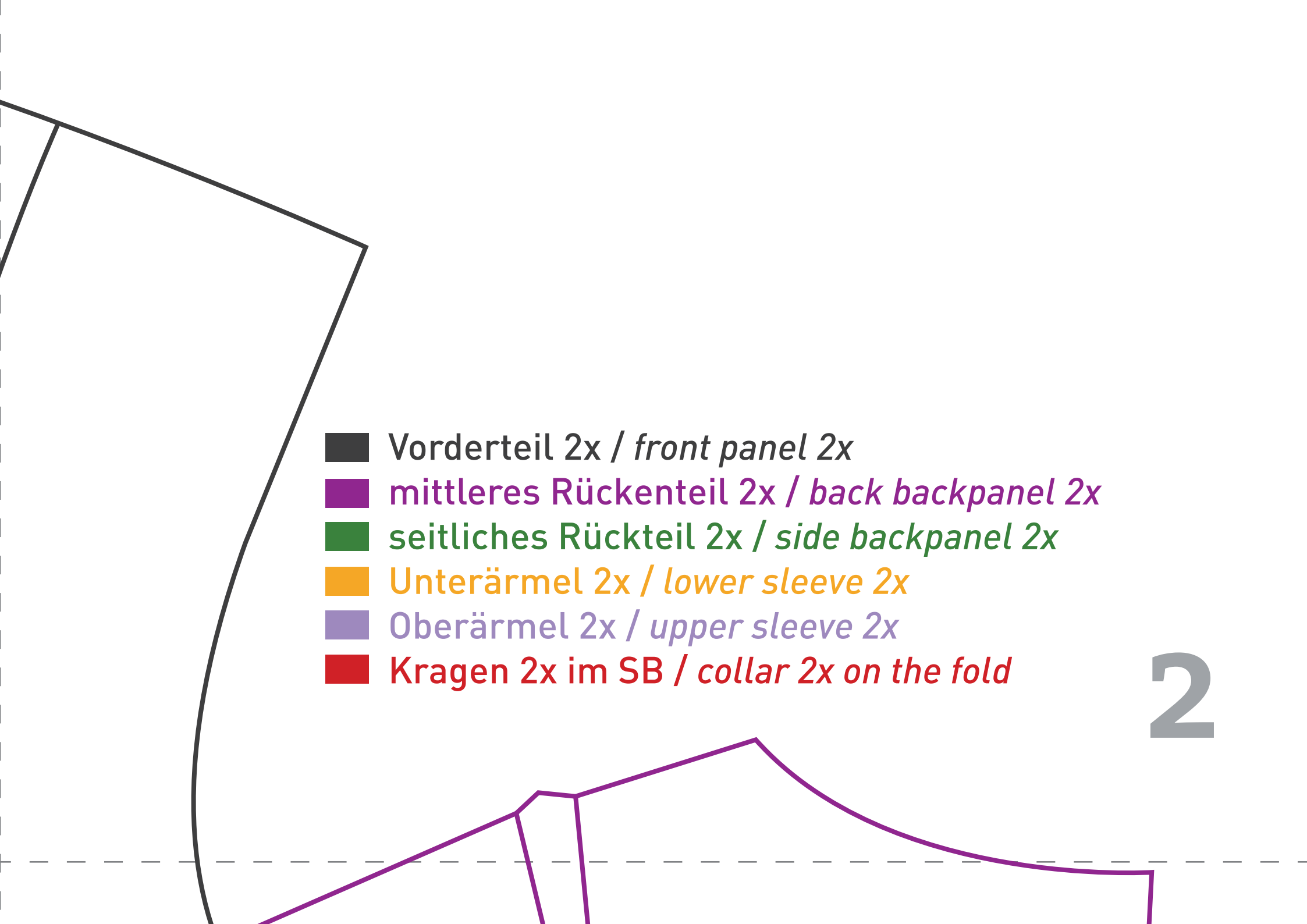
sister
MAG

Schwarzer Business-Blazer // Black business blazer

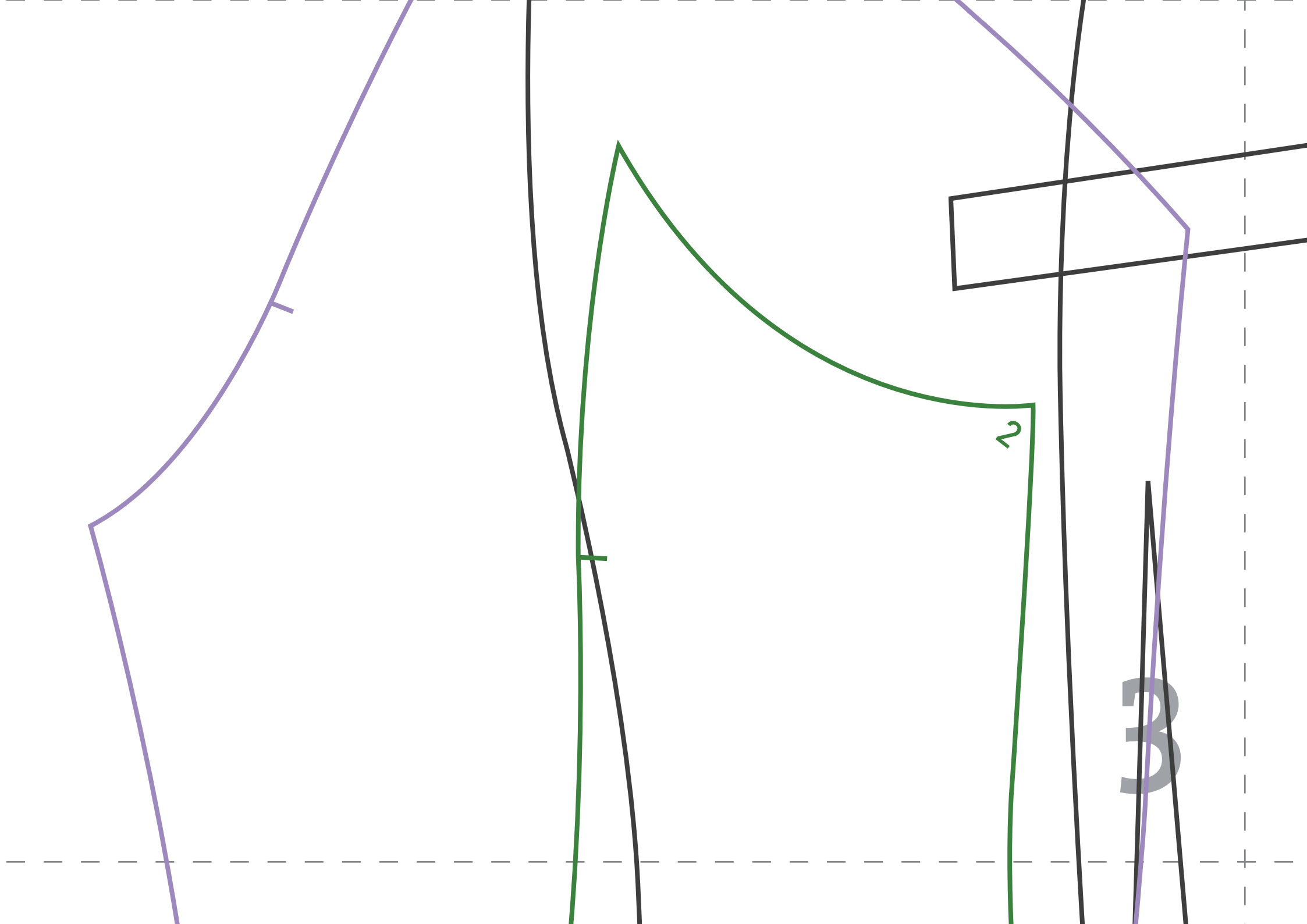
Ausgabe 17 // Issue 17

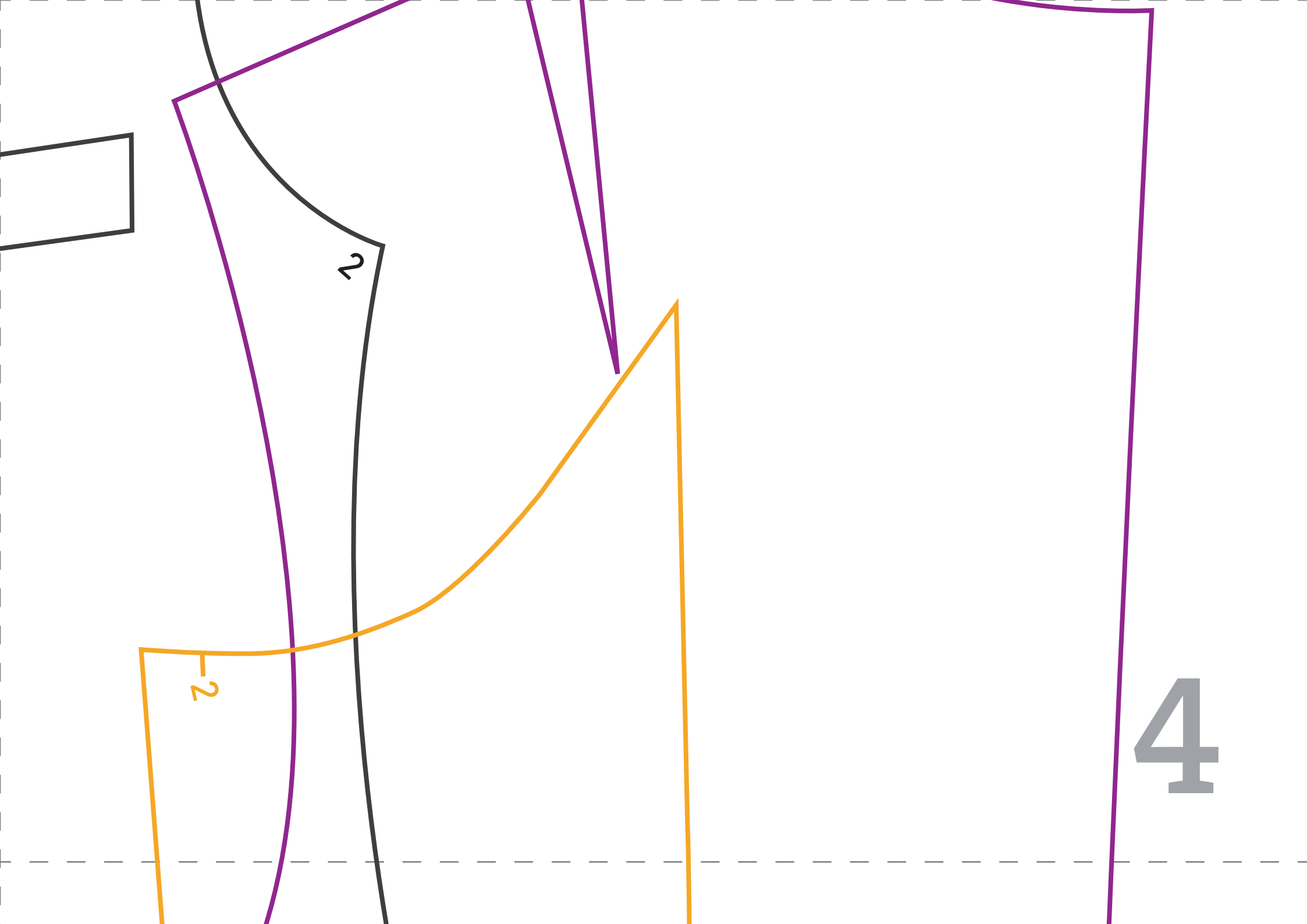
FEBRUAR 2015



- 
- Vorderteil 2x / *front panel 2x*
 - mittleres Rückenteil 2x / *back backpanel 2x*
 - seitliches Rückenteil 2x / *side backpanel 2x*
 - Unterärmel 2x / *lower sleeve 2x*
 - Oberärmel 2x / *upper sleeve 2x*
 - Kragen 2x im SB / *collar 2x on the fold*

2

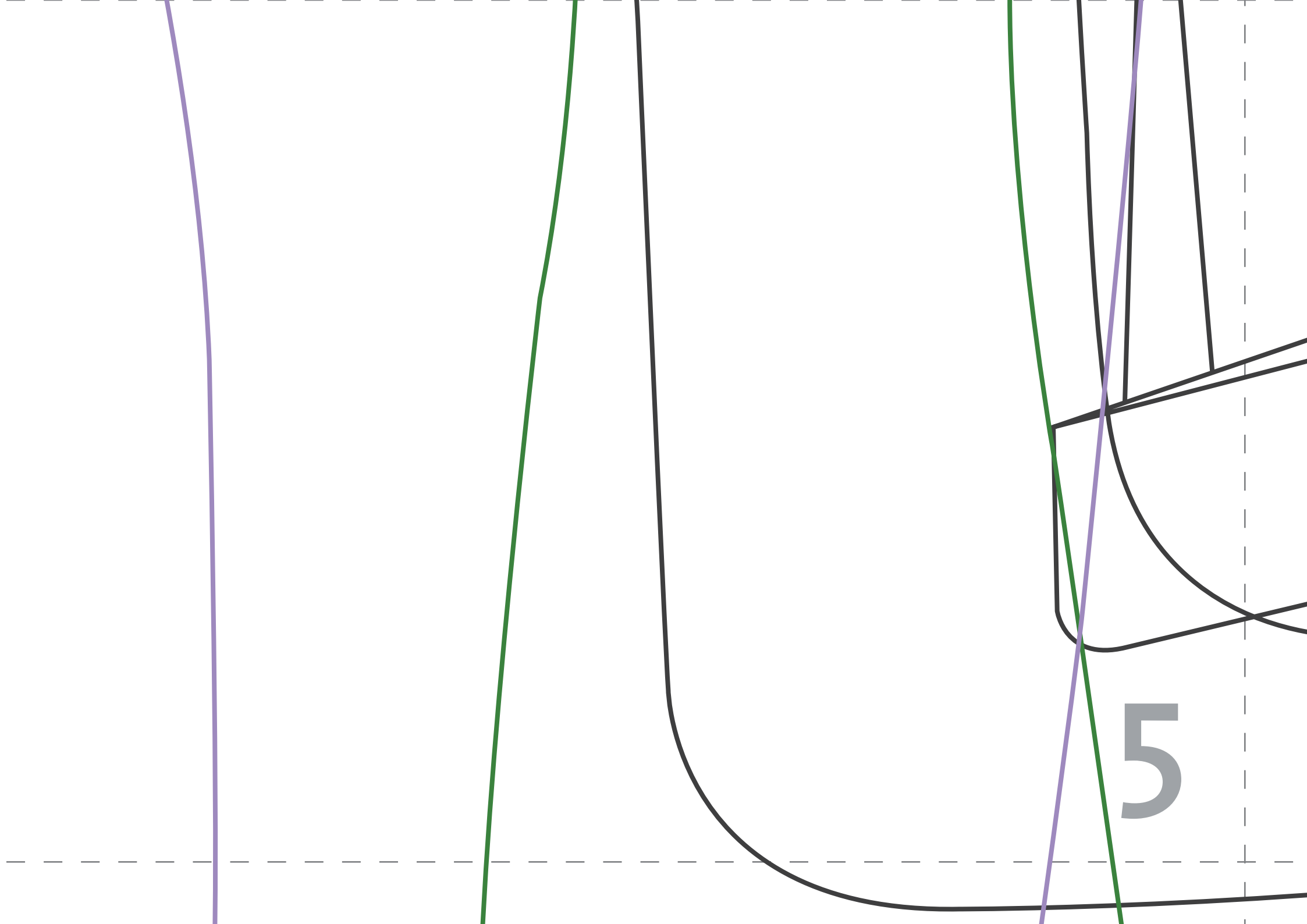




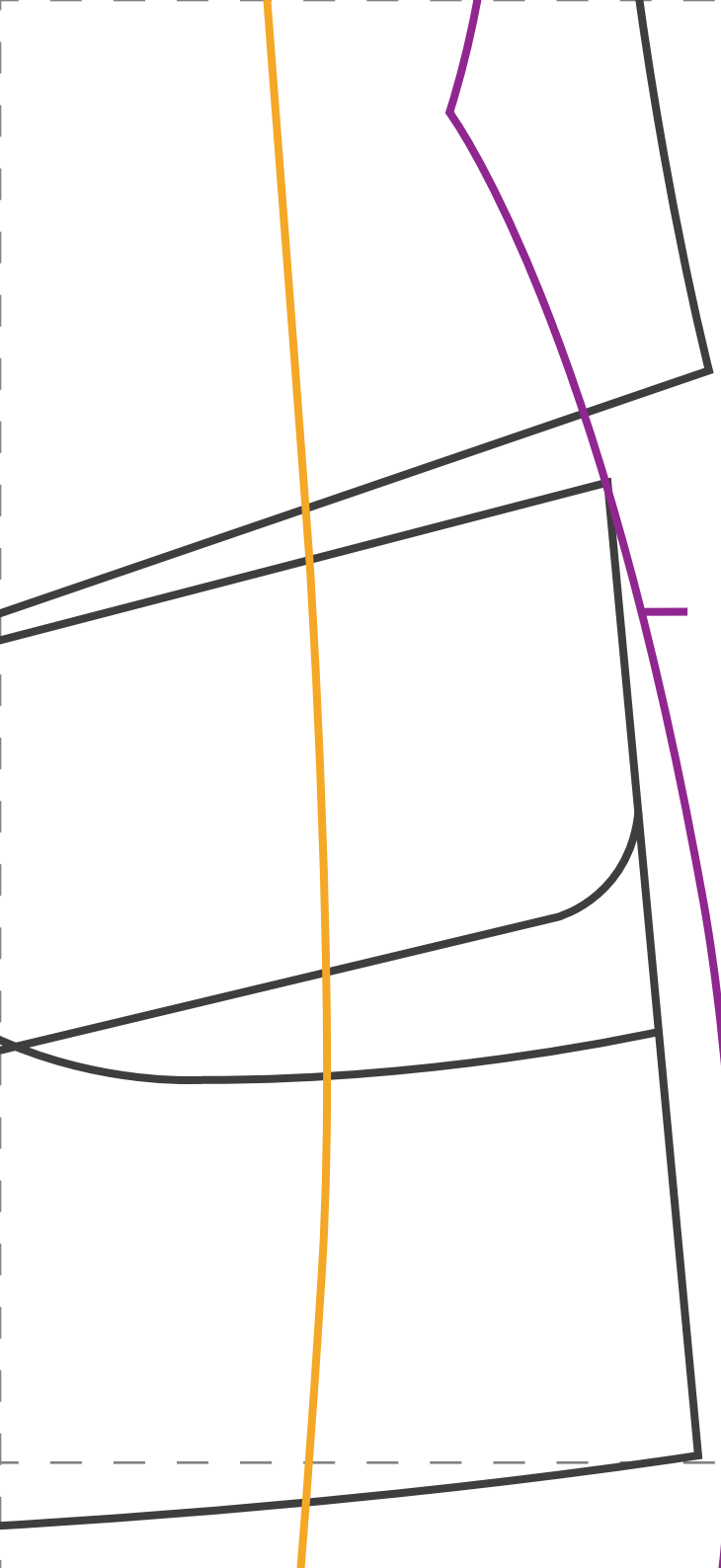
2

-2

4



5



6

Hintere
Mitte /
back middle
SB /
fold

7



1

8