

TUTORIAL

TITLE

Rose-coloured floral dress

FROM THE FEATURE

As if cropped - short dresses & jackets

SISTERMAG

N°8

MATERIALS

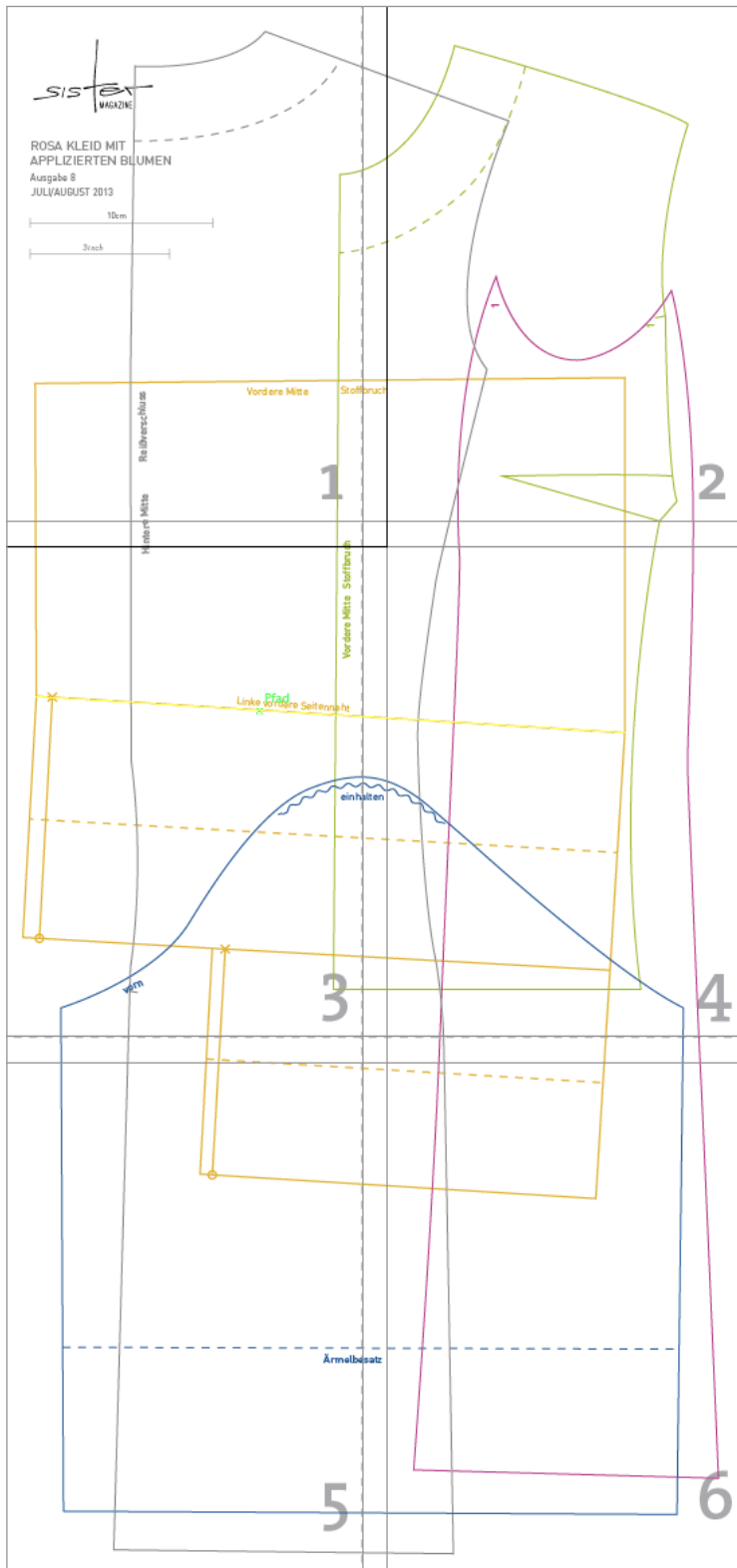
- » 1.40 m fabric
- » Remnants of white and black silk
- » Red and black embroidery thread
- » Zipper 50 cm long

TUTORIAL

1. Cut out petals and circles
2. Cut from dress fabric squares and rectangles in desired size and number, iron edges
3. Work the flowers on the parts.
4. Lay lower front part of the dress on the left in pleats, sew to the upper front part
5. Sew darts
6. Sew side parts to front and back parts
7. Sew seam zipper in the back centre and close back seam
8. Sew by hand with invisible stitches a flower piece onto one of the sleeve
9. Close sleeve seams, trim bottom sleeve edges and insert sleeves
10. Position the other flower pieces on the dress and also sew
11. Copy neckline facing from pattern, cut to size and sew right sides together on the neckline, iron inwards and sew by hand at the shoulder seams and the zipper. Trim the dress hem.



OVERVIEW PATTERN



- Lower front part
- Upper front part
- Side part
- Back part
- Sleeves

Rose-coloured
floral dress

Issue 8

JULY/AUGUST 2013



Centre front

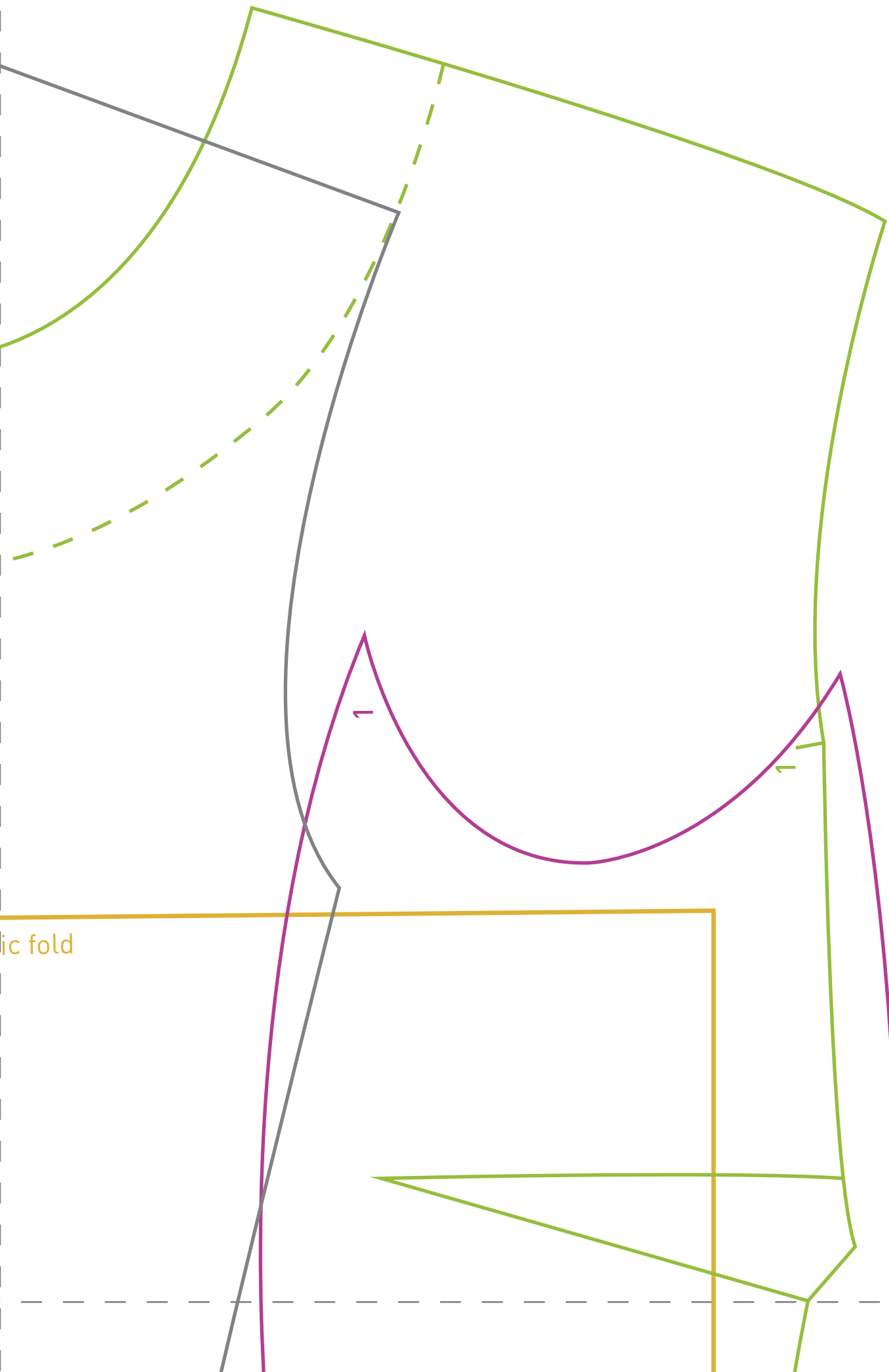
Fabric fold

Zipper

Centre back

1

1d



ic fold

Centre

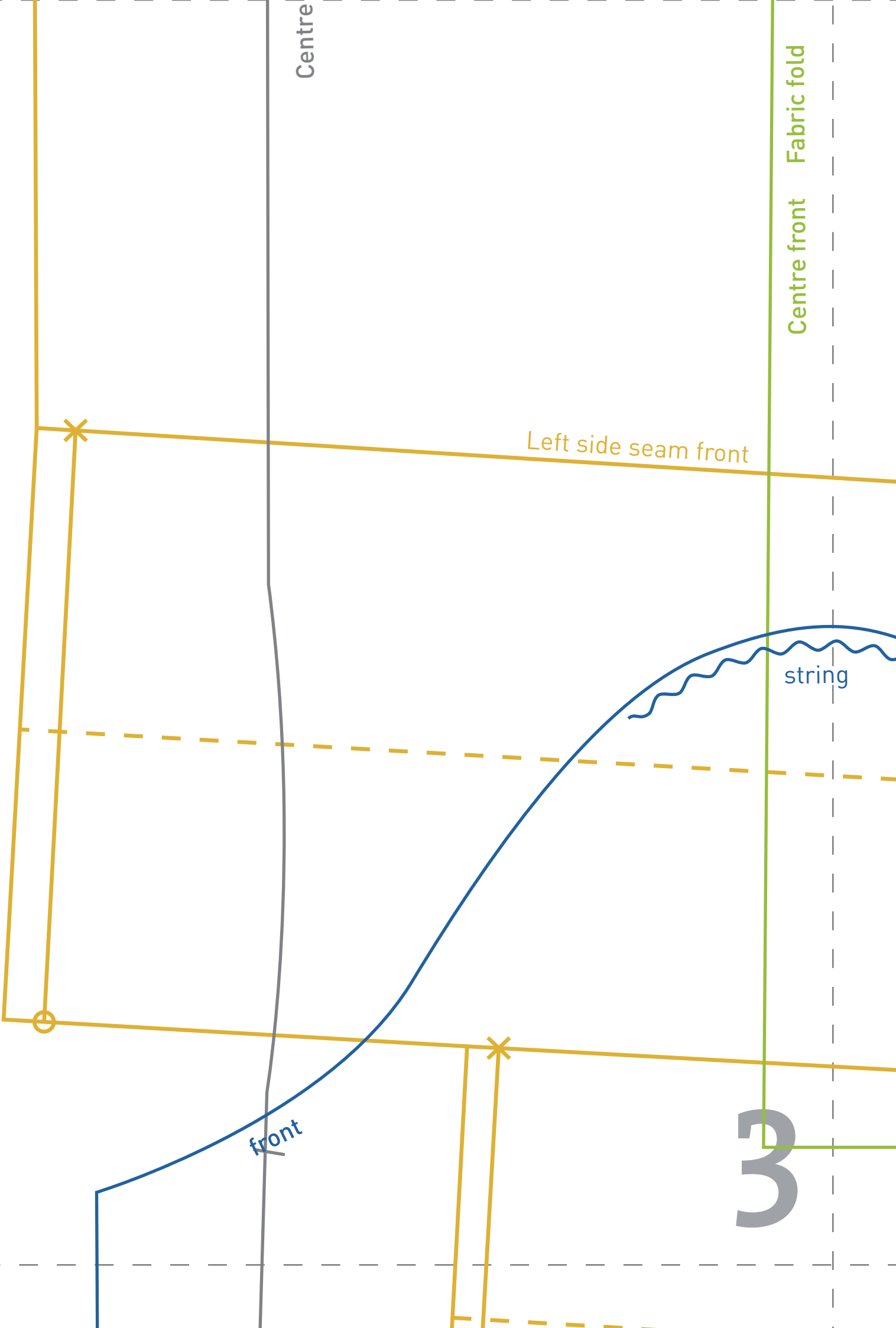
Centre front Fabric fold

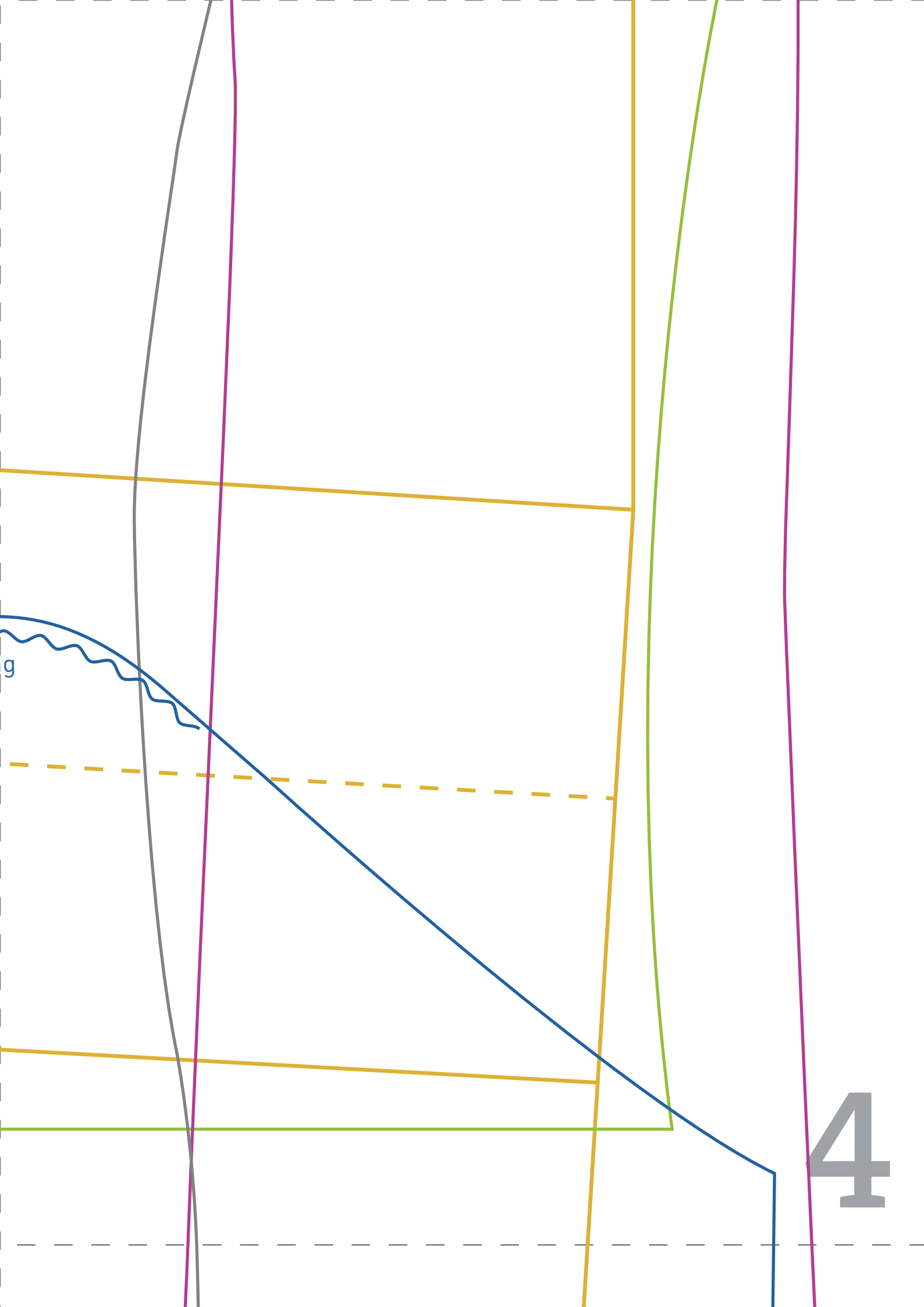
Left side seam front

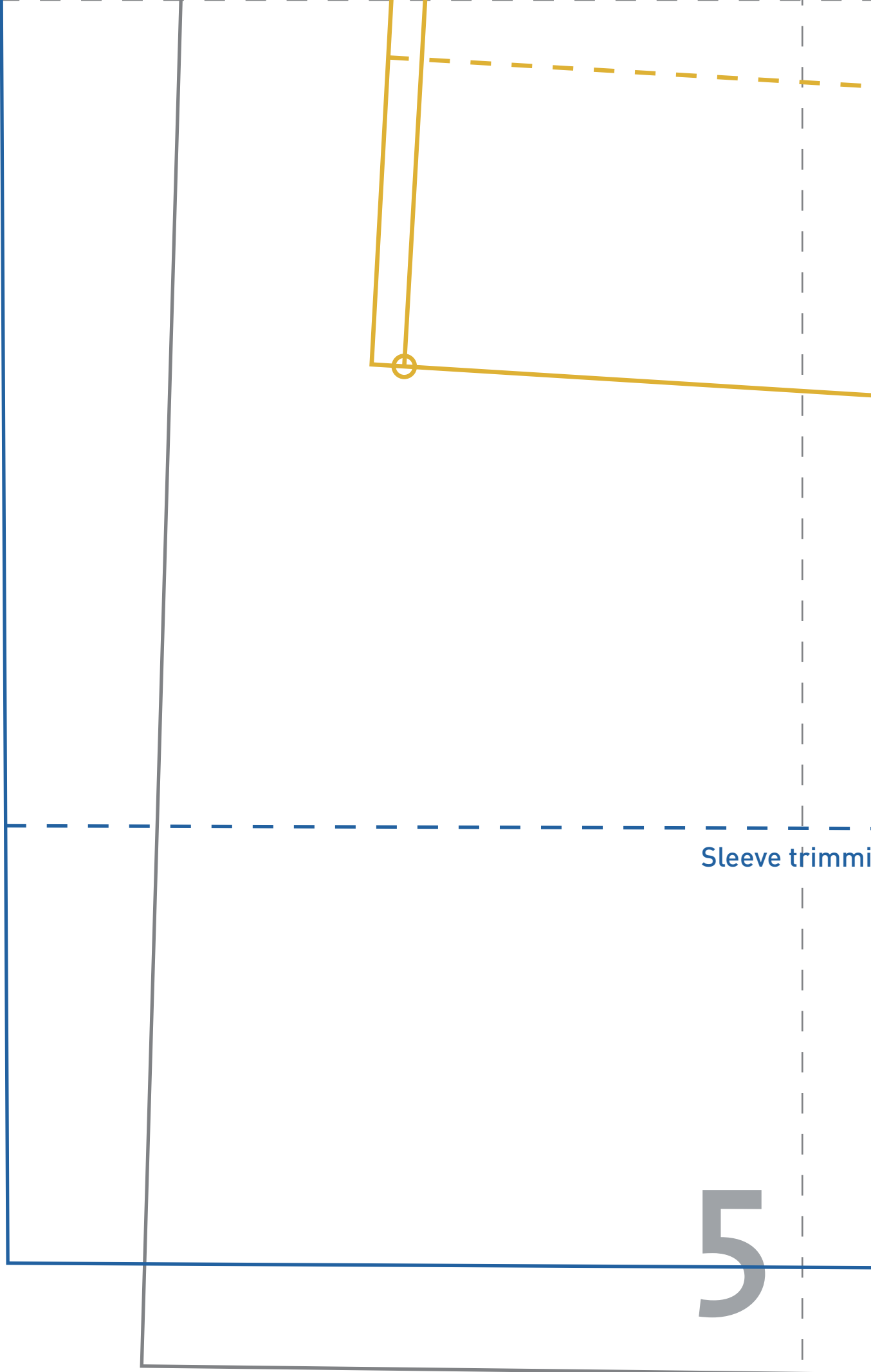
string

front

3







Sleeve trimmi

5

rimming

6