



sister
MAG



TUTORIAL

TITLE

COTTON DRESS

FROM THE FEATURE

ROMAN HOLIDAY

SISTERMAG

N°19

SIZE 36 (UK 8 – 12/US 6 -10)

HOW-TO

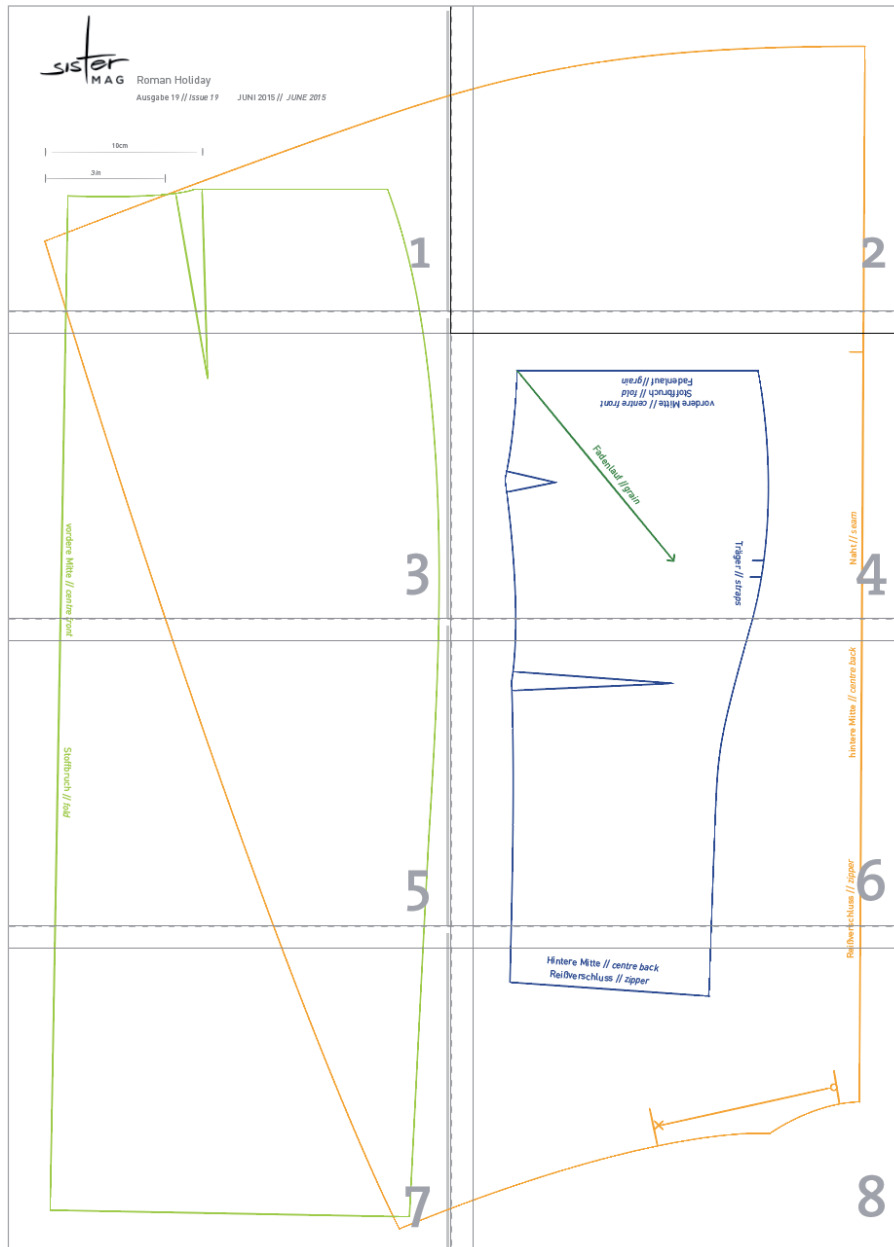
MATERIALS

- » 1.5 m (1.65 yards) pink cotton (<http://bit.ly/1Uc-0XBq>)
- » 1 m (1.1 yards) grey cotton (<http://bit.ly/1H-zfpQy>)
- » Cuts of black tulle
- » Invisible zipper 60 cm (23.5")
- » Beads and sequins

1. Sew front bodice and front skirt together, do the same with the back panels
2. Gather the shoulder parts of both front and back unevenly to yield a width of 9 cm., stitch together
3. Stitch back middle seam up to zipper edge, then sew in zipper
4. Gather the neck to a width of 10 cm (4") at the back and 14 cm (5.5") at the front (for a finished neck line of 48 cm (18.9"))
5. Sew on tulle cuts using a zigzag stitch
6. Sew front shoulder edge to back shoulder edges
7. Close side seams adding seam pockets
8. Add facings to arm holes (turning over) and close facings# inside seams by hand
9. Trim neck line using bias tape
10. Hem
11. Cut stripes of fabric for the belt (150cm x 14cm / 59" x 5.5") and sew together adding buckle
12. Embroider dress using beads and sequins



PATTERN - OVERVIEW



- top (1x to fold)
- lining (1x to fold, same as top, but different grain)
- back panel of skirt (2x to fold)
- front panel of skirt (1x to fold)

sister
MAG

Roman Holiday

Ausgabe 19 // Issue 19

JUNI 2015 // JUNE 2015





9 cm

10cm

3 in

um 27 cm verlängern// make 27 cm longer

1

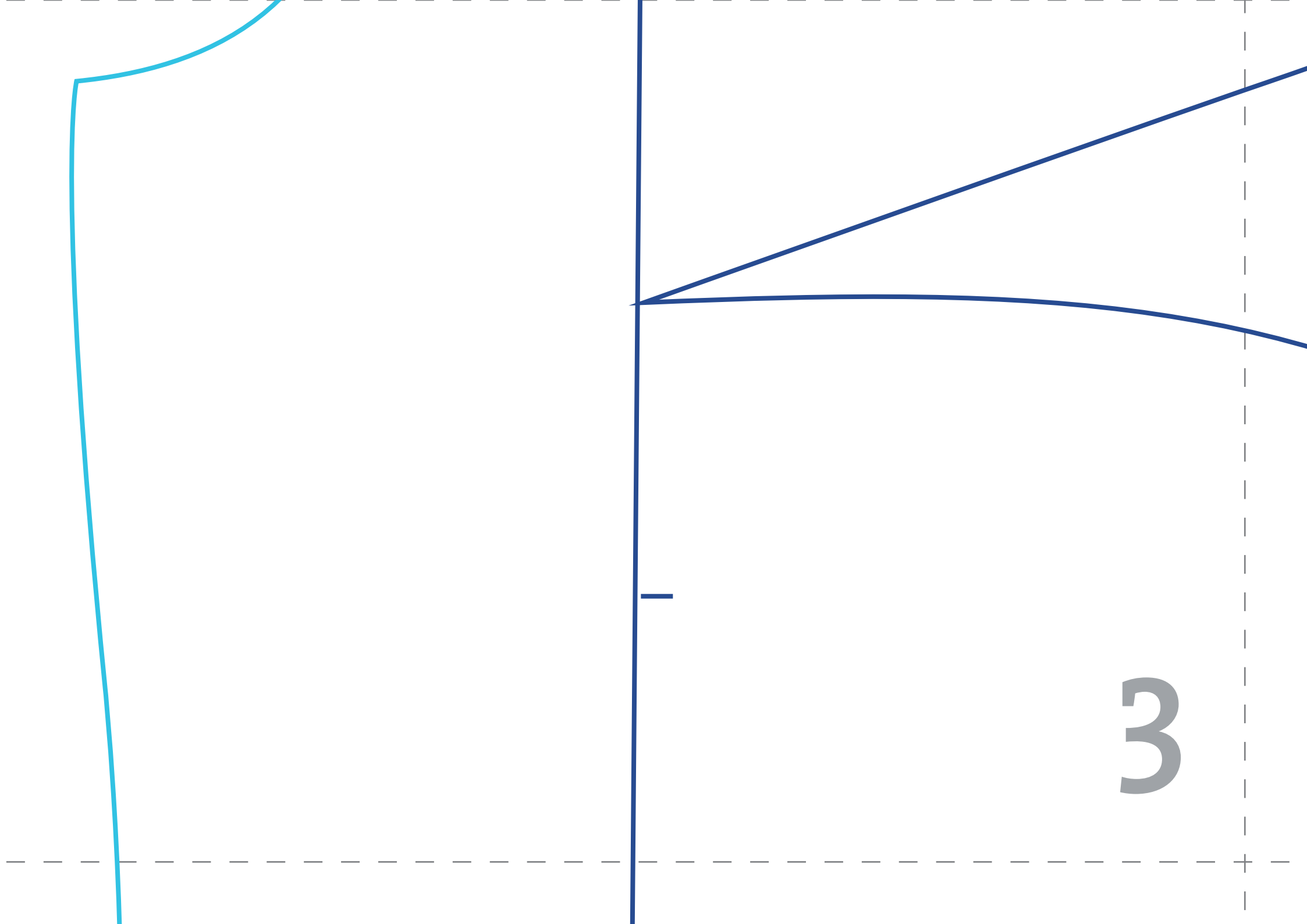
-  Vorderteil (1x im Stoffbruch) // *front panel (1x to fold)*
-  Rückenteil (2x) // *back panel (2x)*
-  vorderer Armbesatz (2x) // *arm trimmings front (2x)*
-  hinterer Armbesatz (2x) // *arm trimmings back (2x)*

14 cm

Durchschnitt linke Seite // average left

... // make 27 cm longer

2



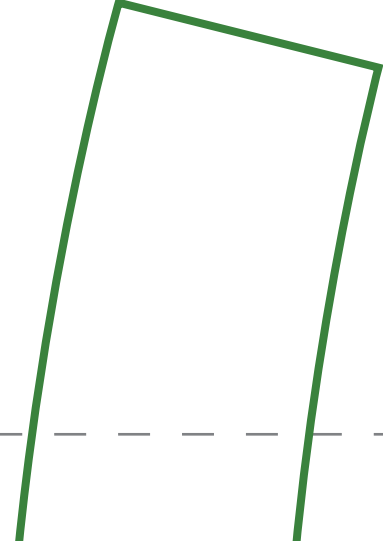
linke Seite // average left side

Durchschnitt rechte Seite // average right side

bruch // fold

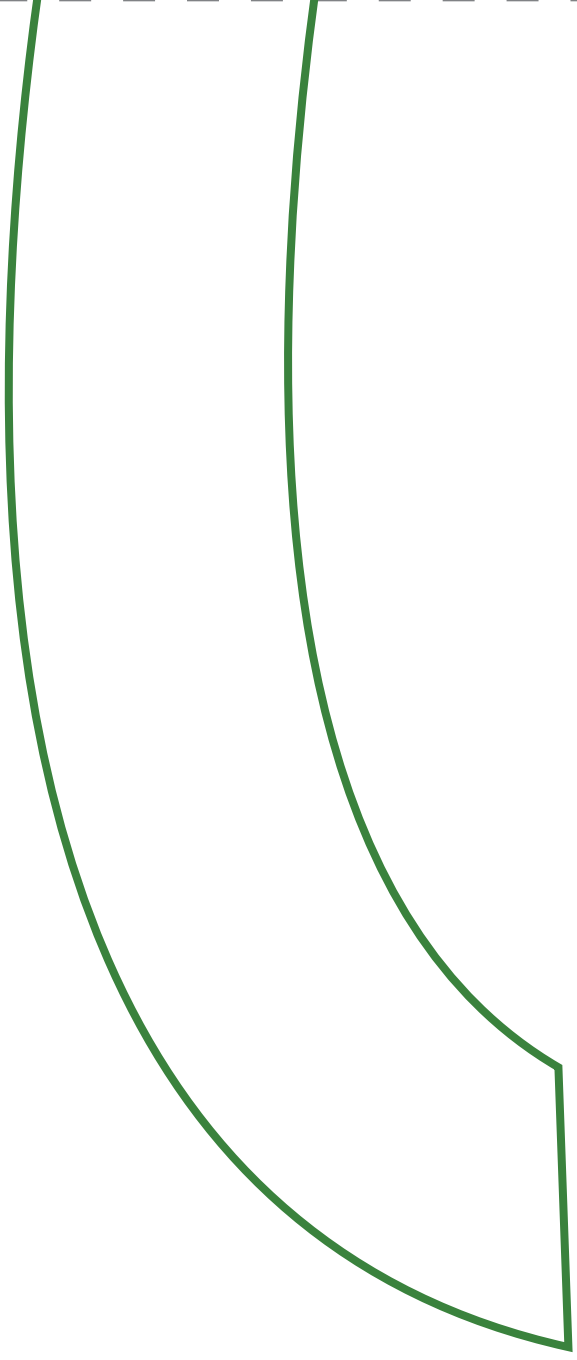
um 27 cm verlängern // m

4



Reißverschluss // zipper

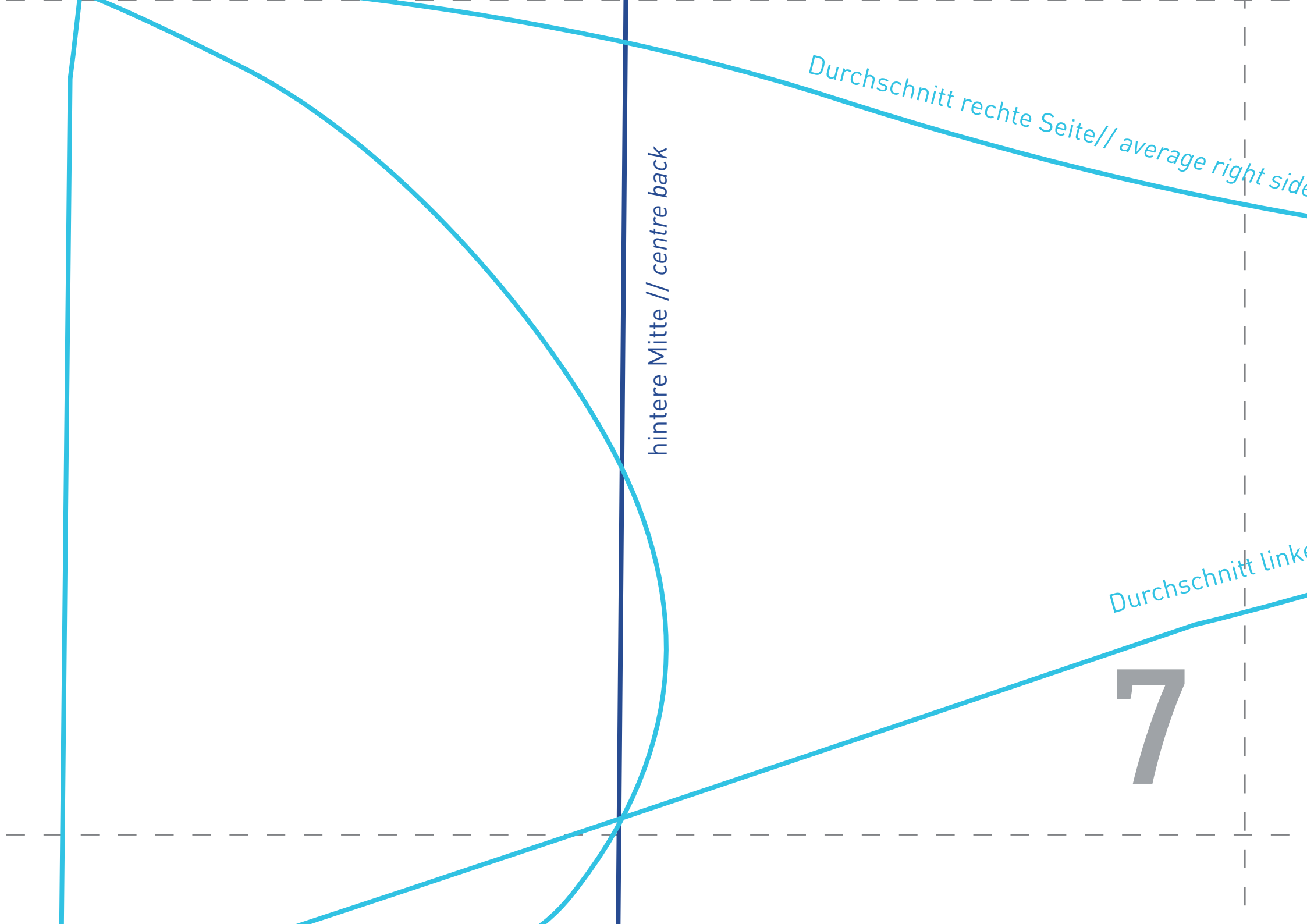
5



vordere Mitte // centre front

Stoffbruch

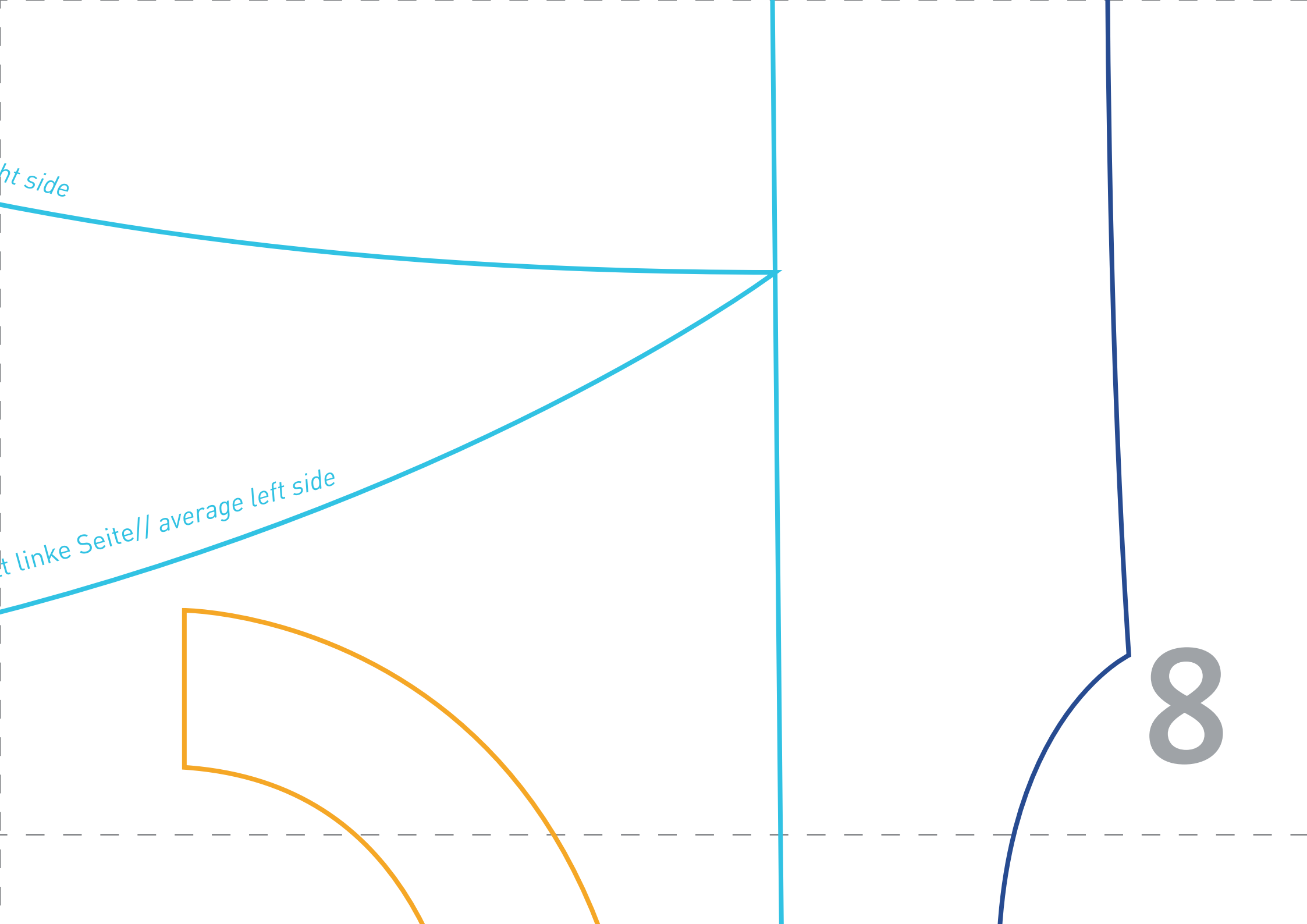
6



ht side

t linke Seite // average left side

8



um 22 cm verlängern// make 22 cm longer

10 cm

9

