

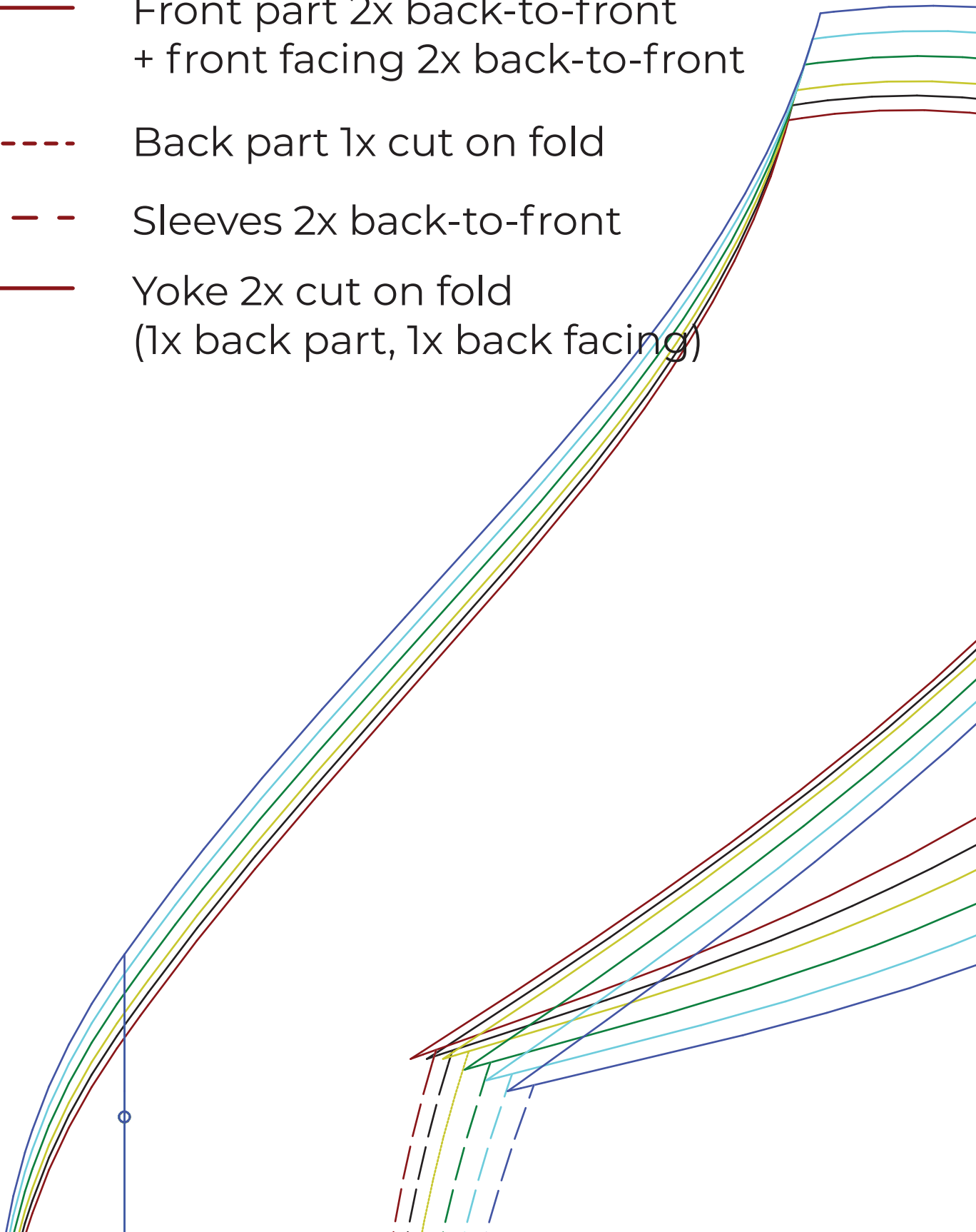
Sand-coloured chambray dress

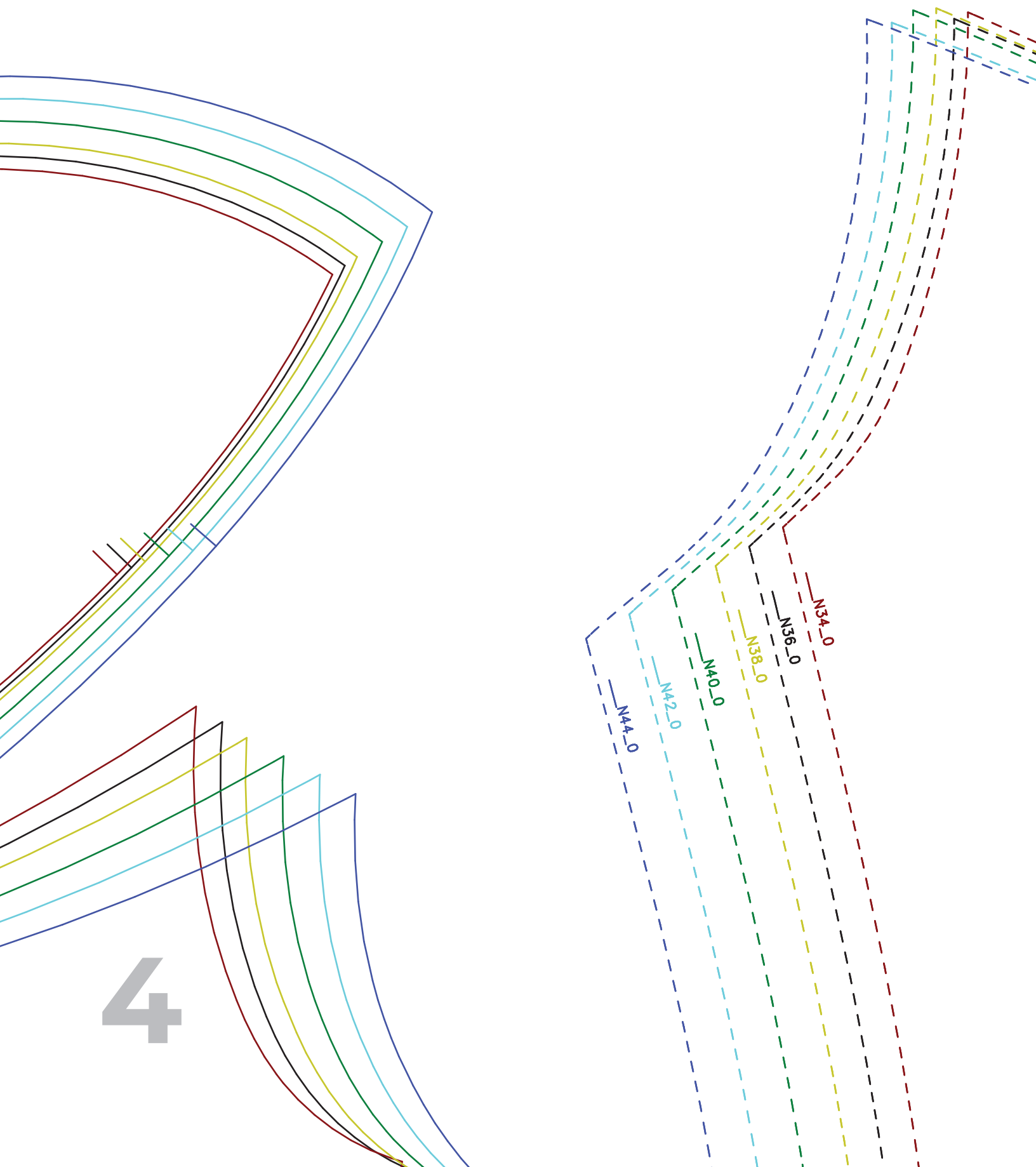
sM48 May 2019 / Sizes 34-44

- Front part 2x back-to-front
+ front facing 2x back-to-front
- - - Back part 1x cut on fold
- - - Sleeves 2x back-to-front
- Yoke 2x cut on fold
(1x back part, 1x back facing)

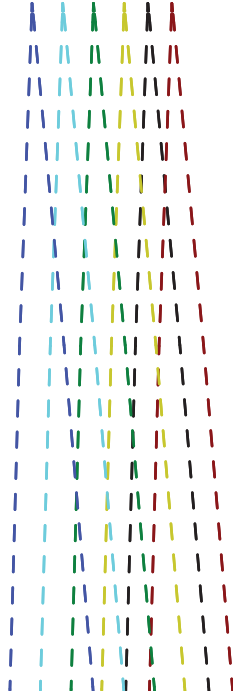
10 cm

1





7

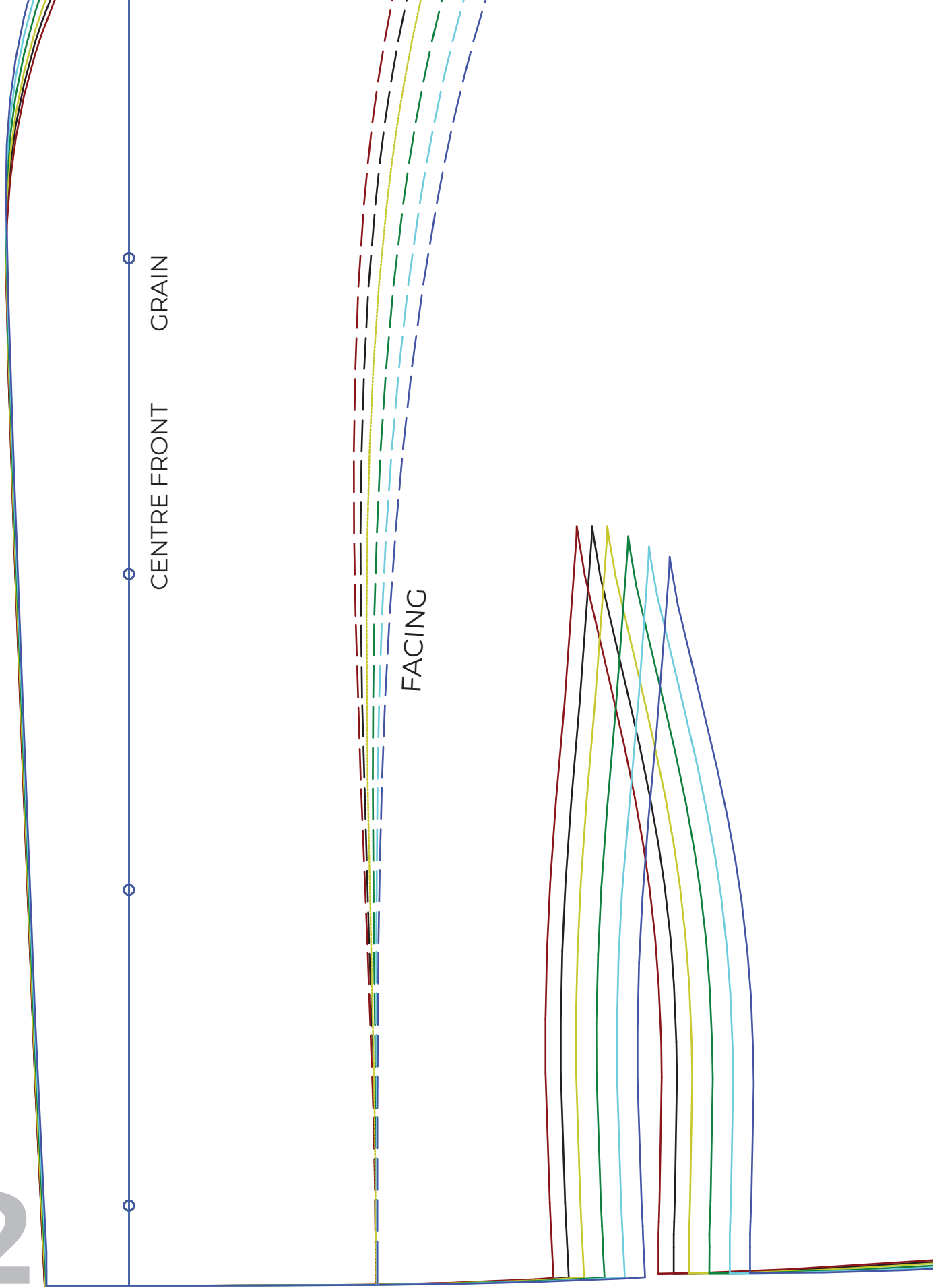


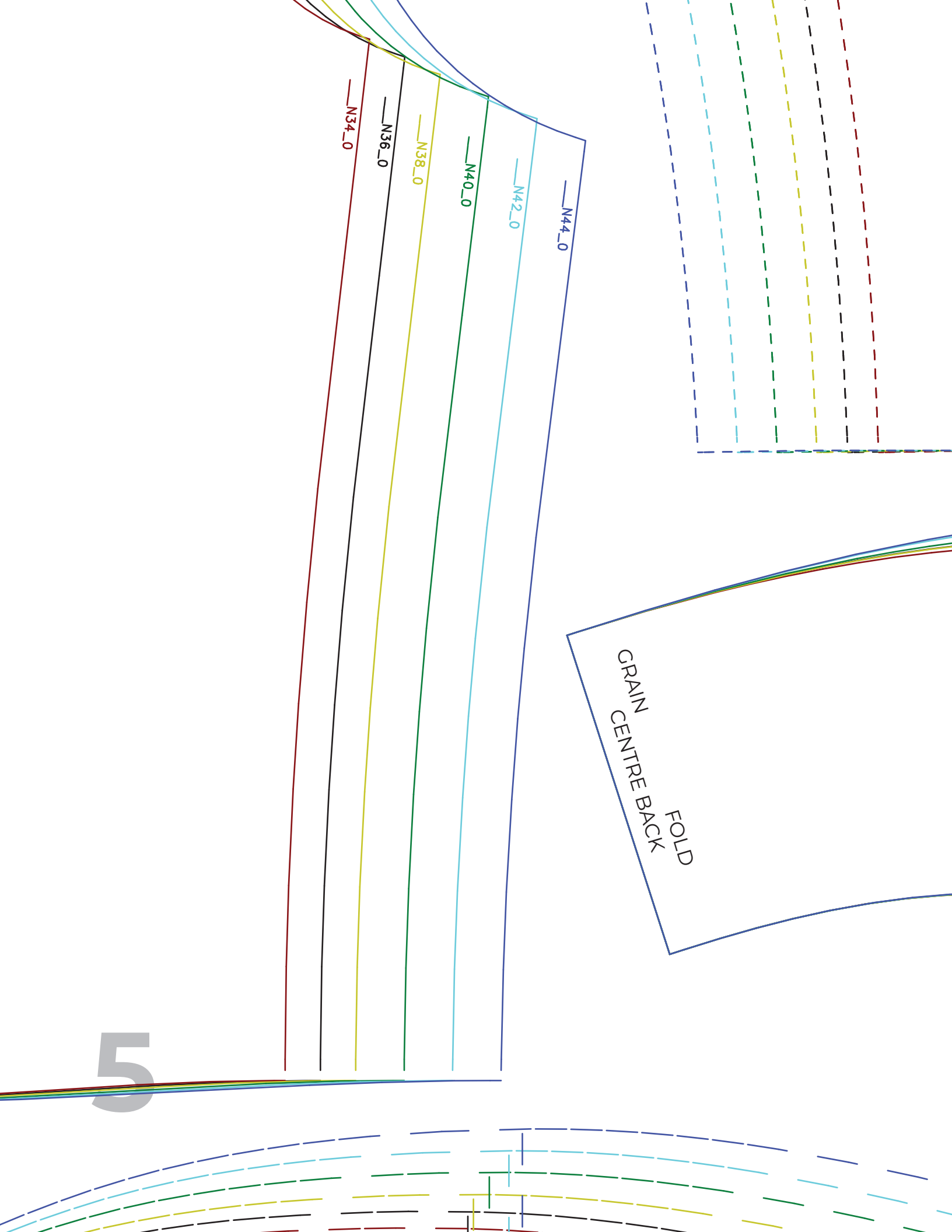
CENTRE BACK

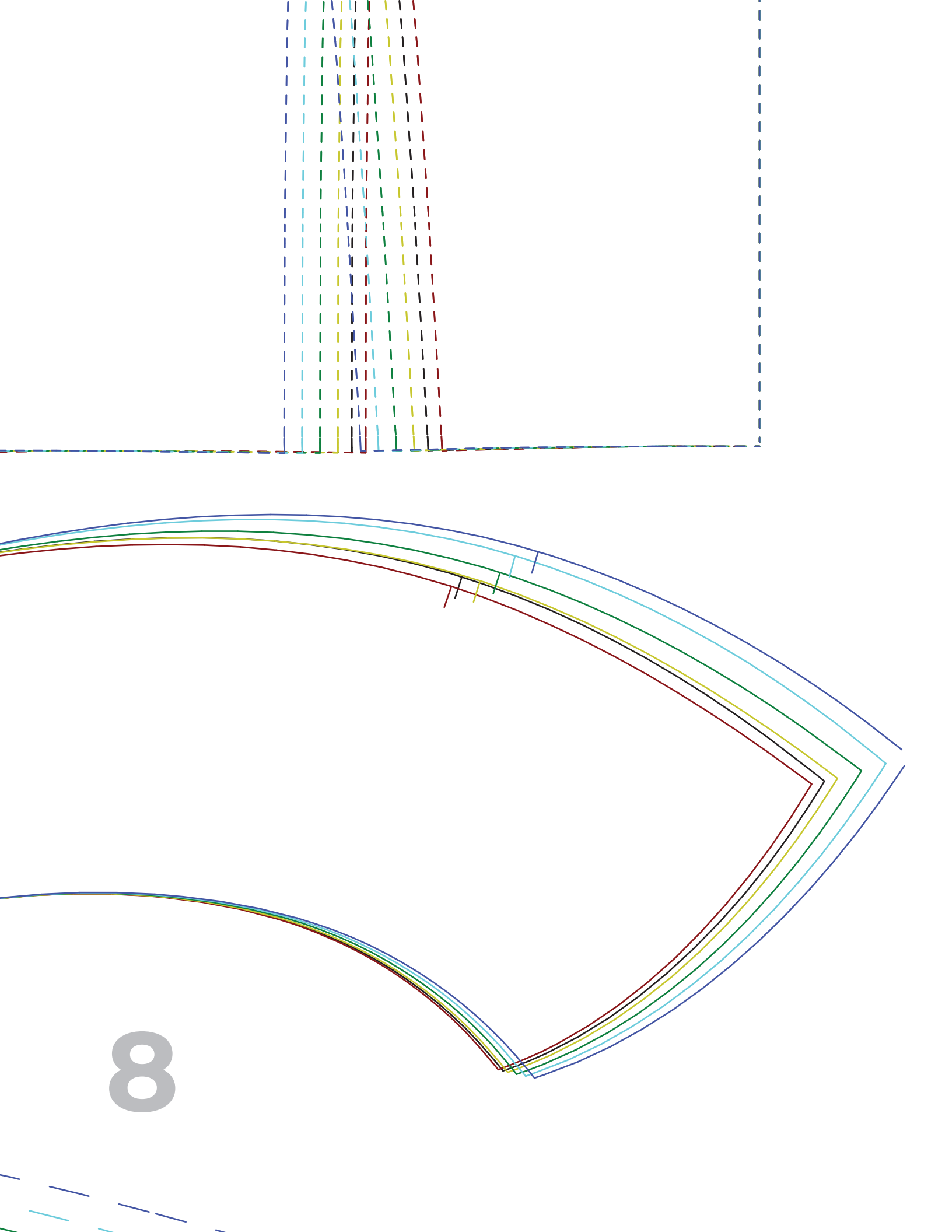
FOLD

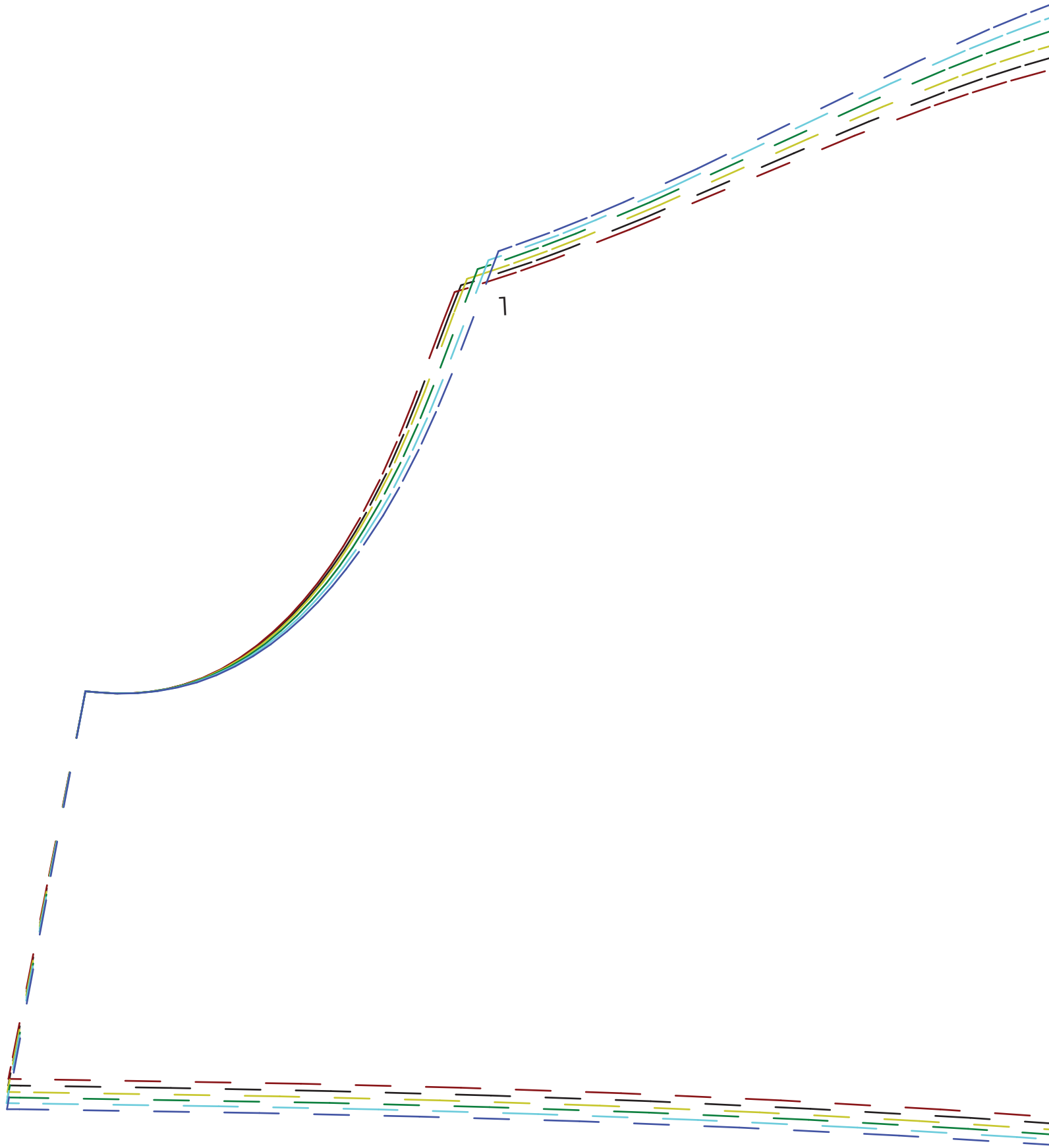
GRAIN

2



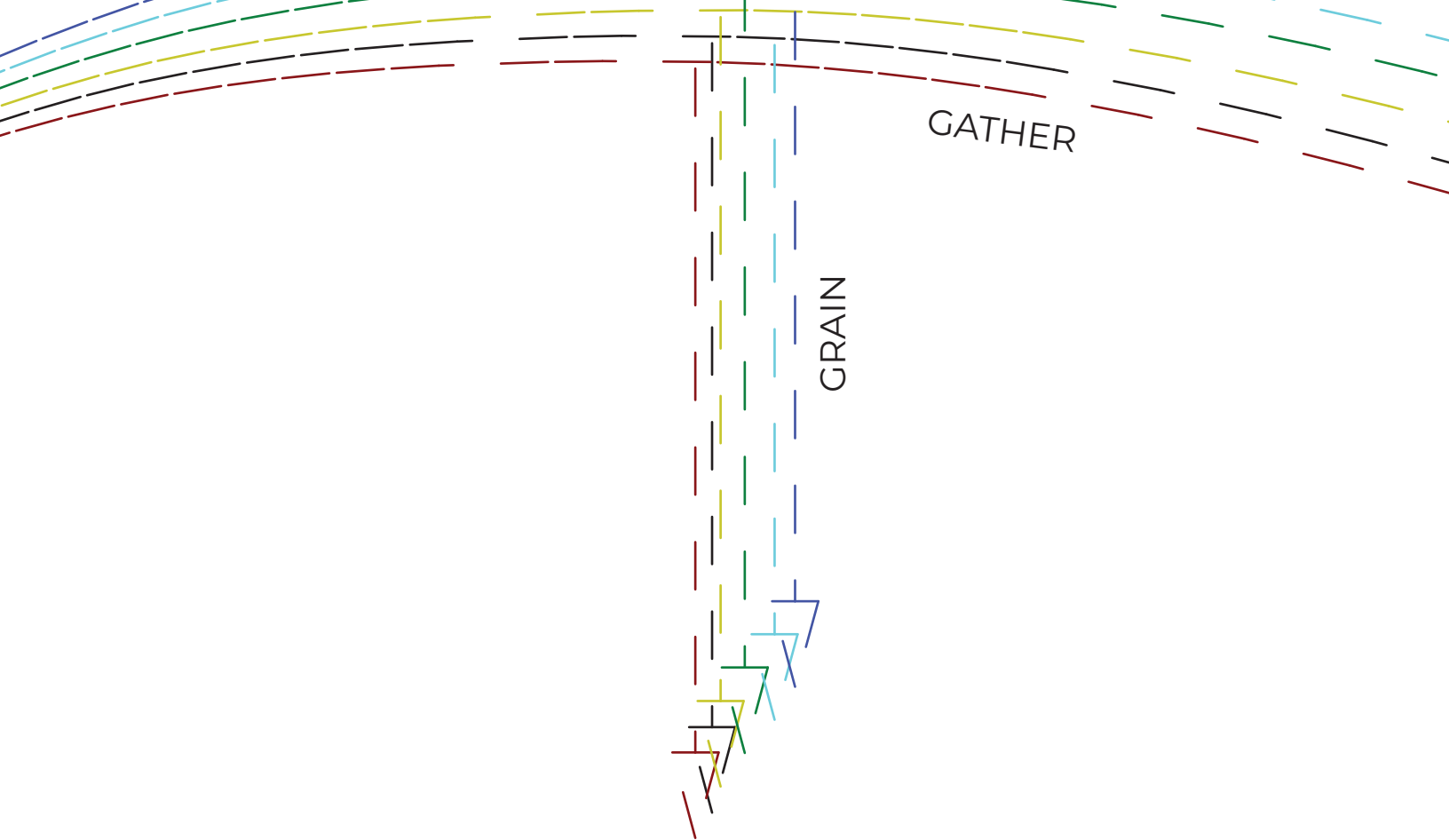






3

1



6

