

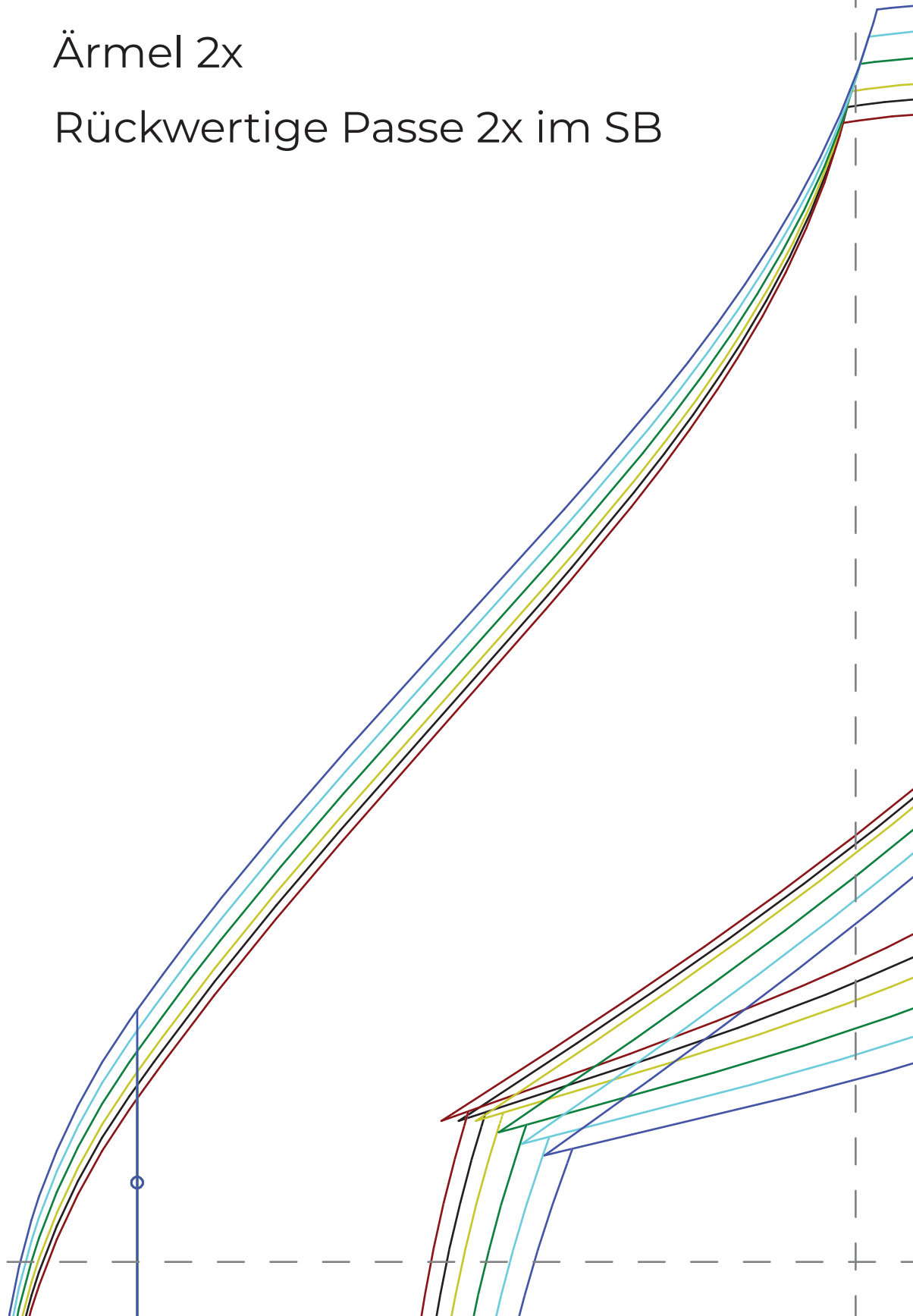
# Sandfarbenes Baumwollkleid aus Chambray

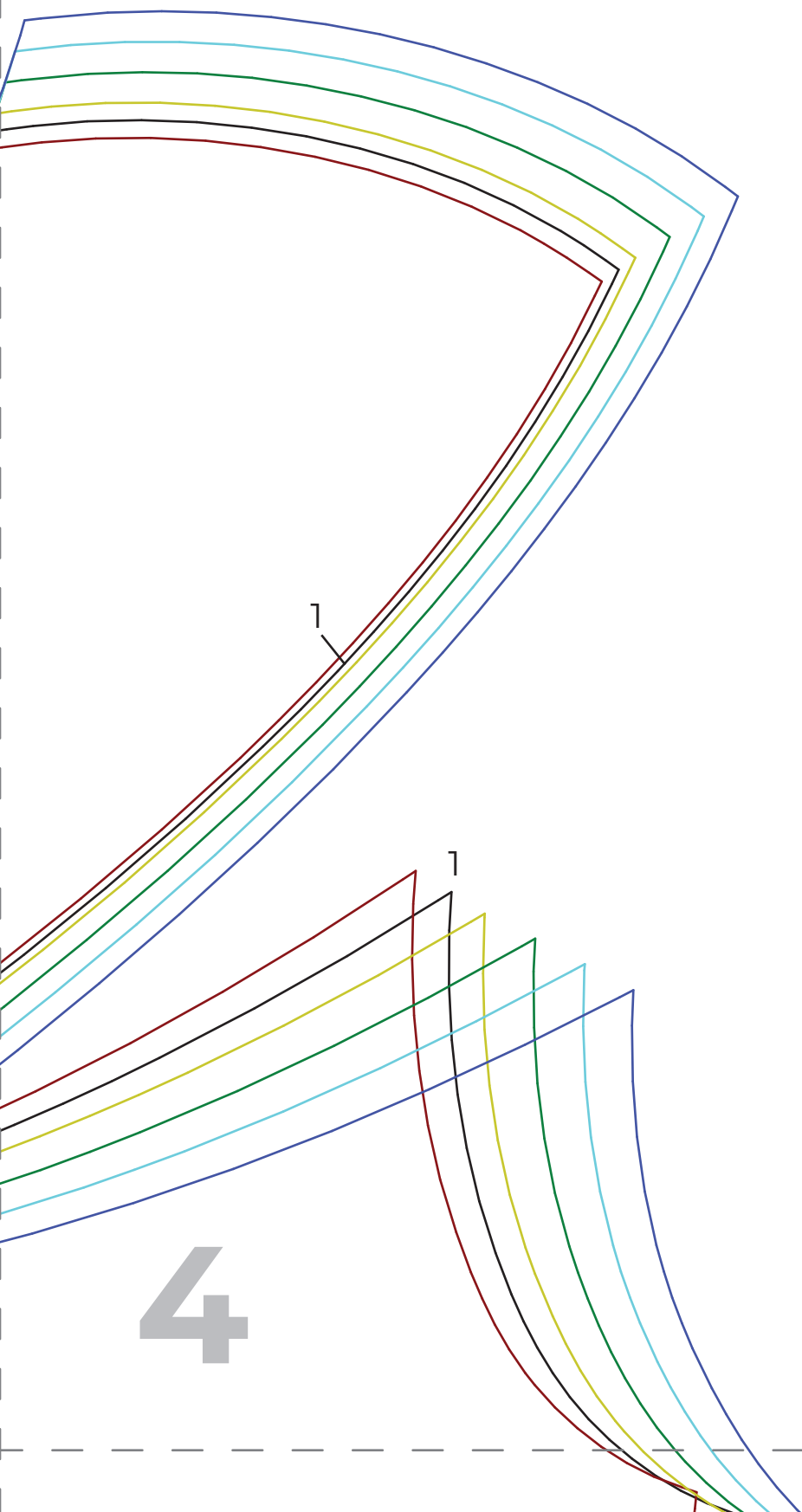
sM48 Mai 2019 / Größe 34-44

- Vorderteil 2x + Besatz 2x
- - - Rückenteil 1x im SB
- - - Ärmel 2x
- Rückwertige Passe 2x im SB

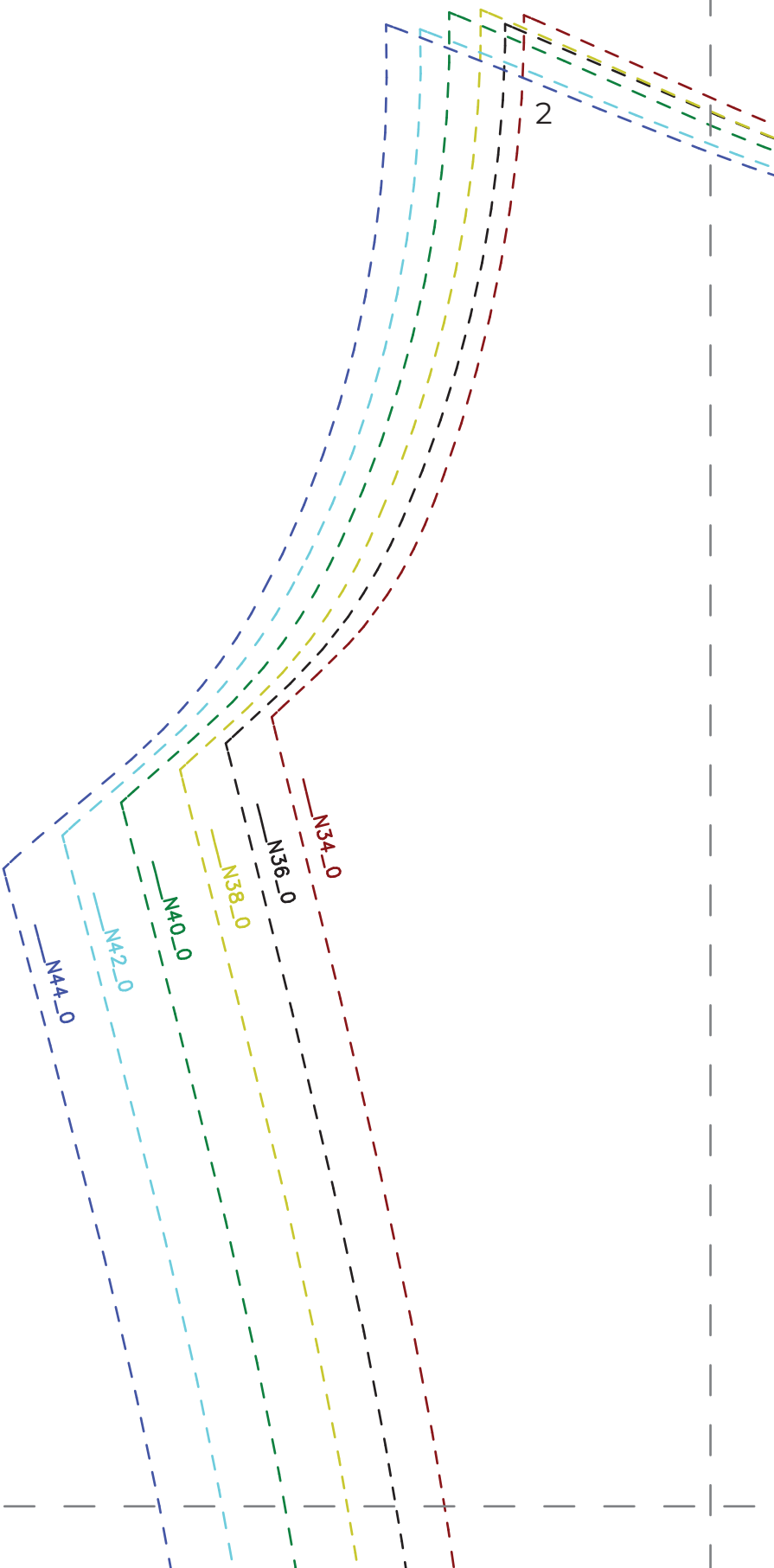
10 cm

1



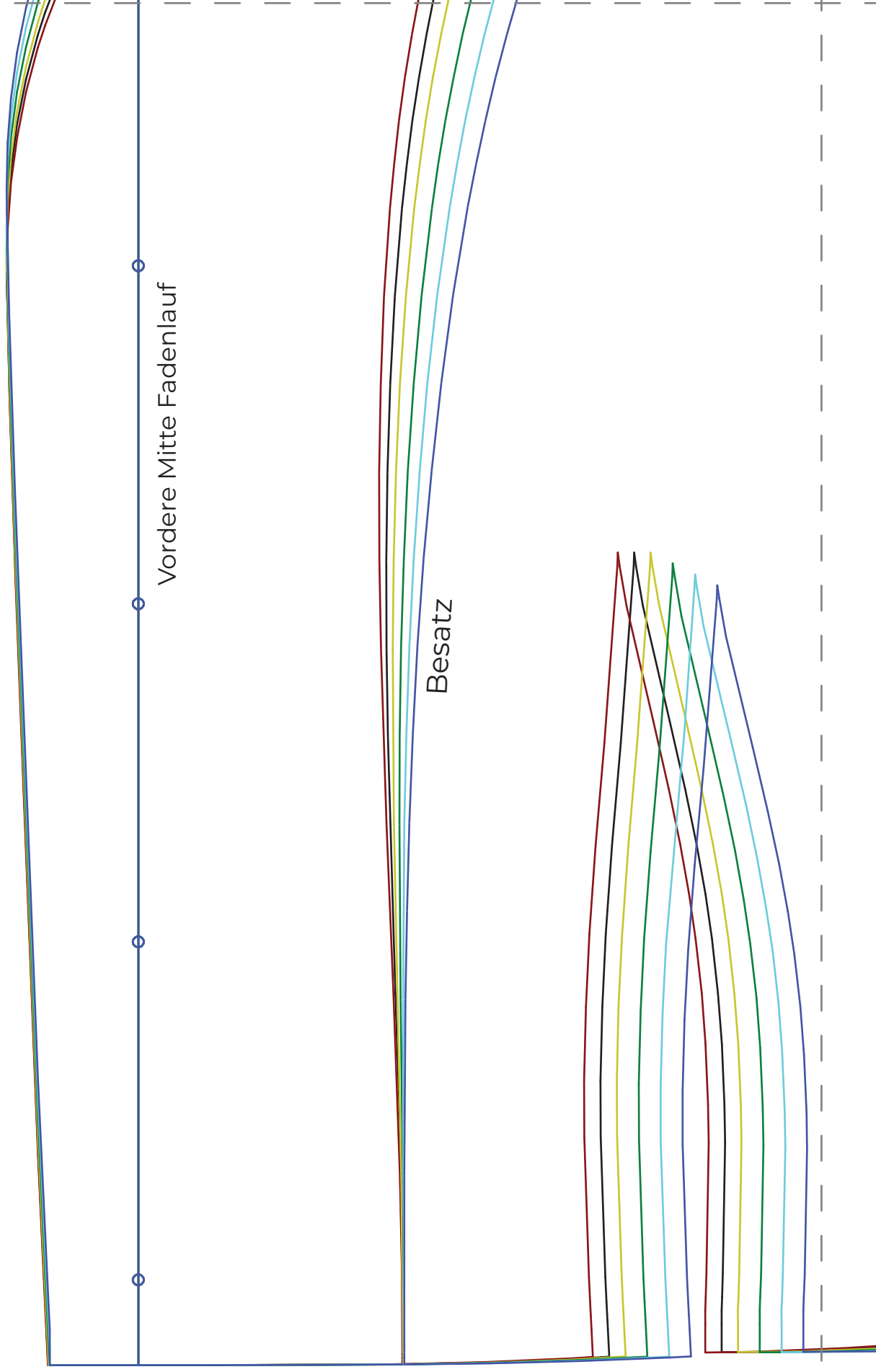


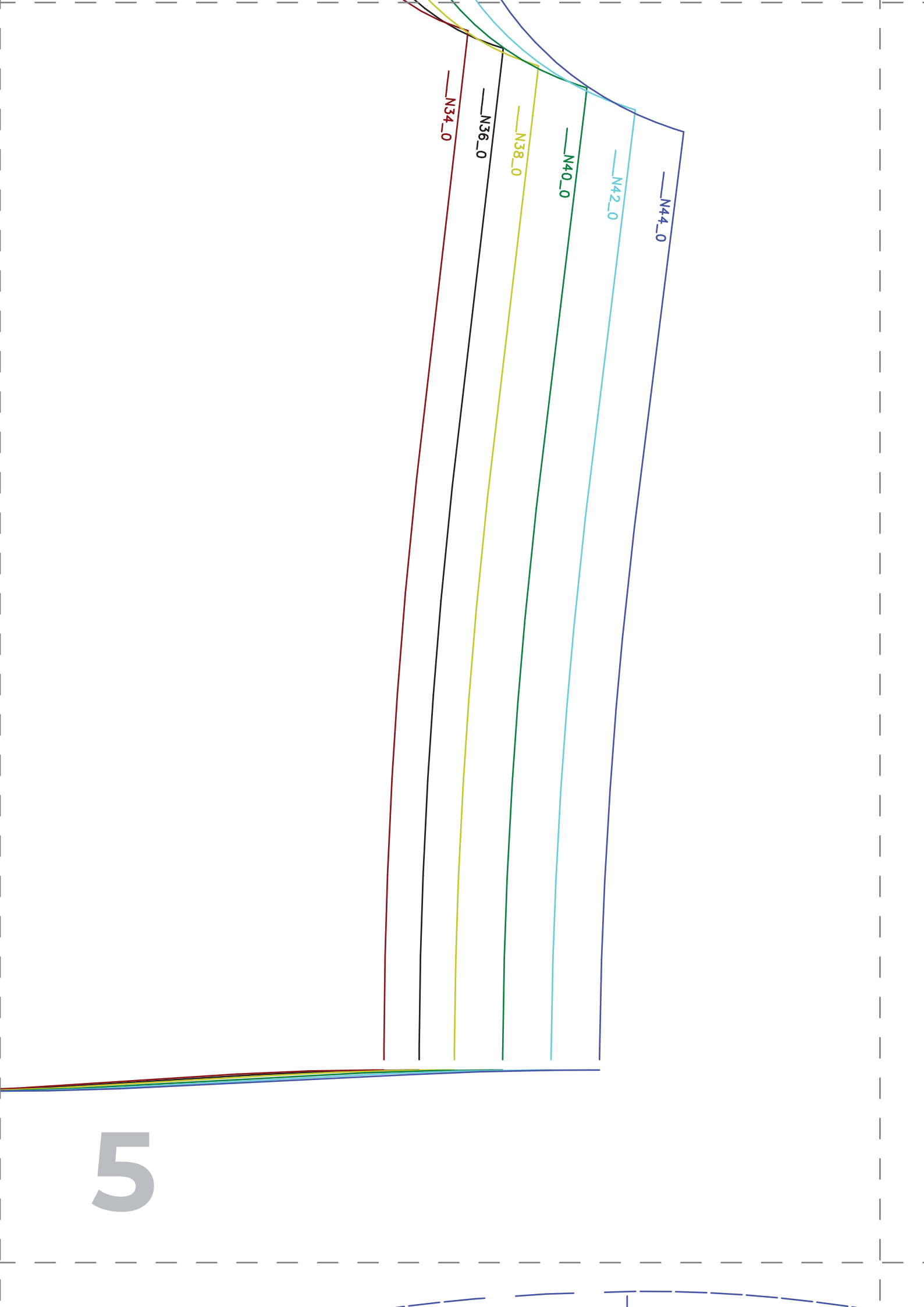
7



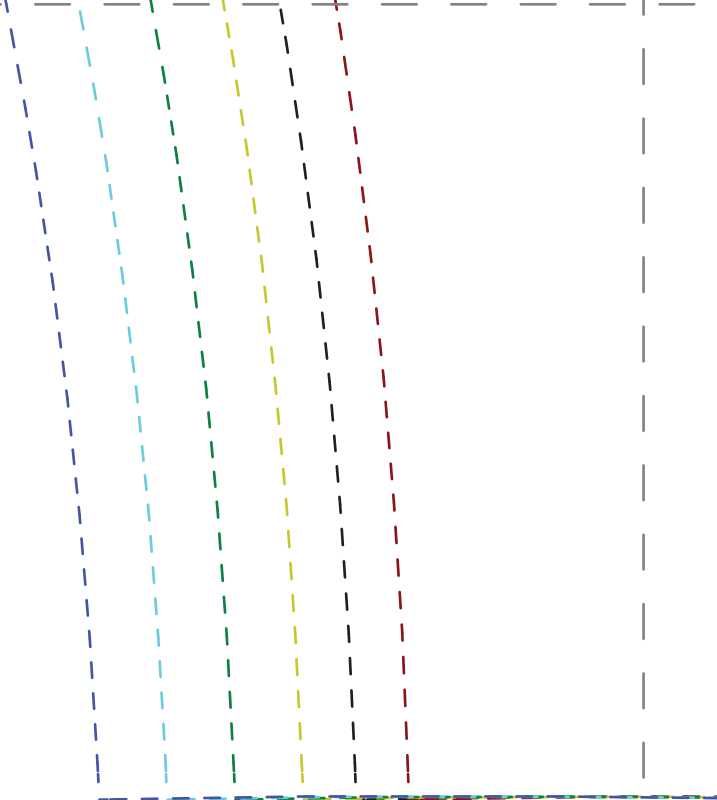
10

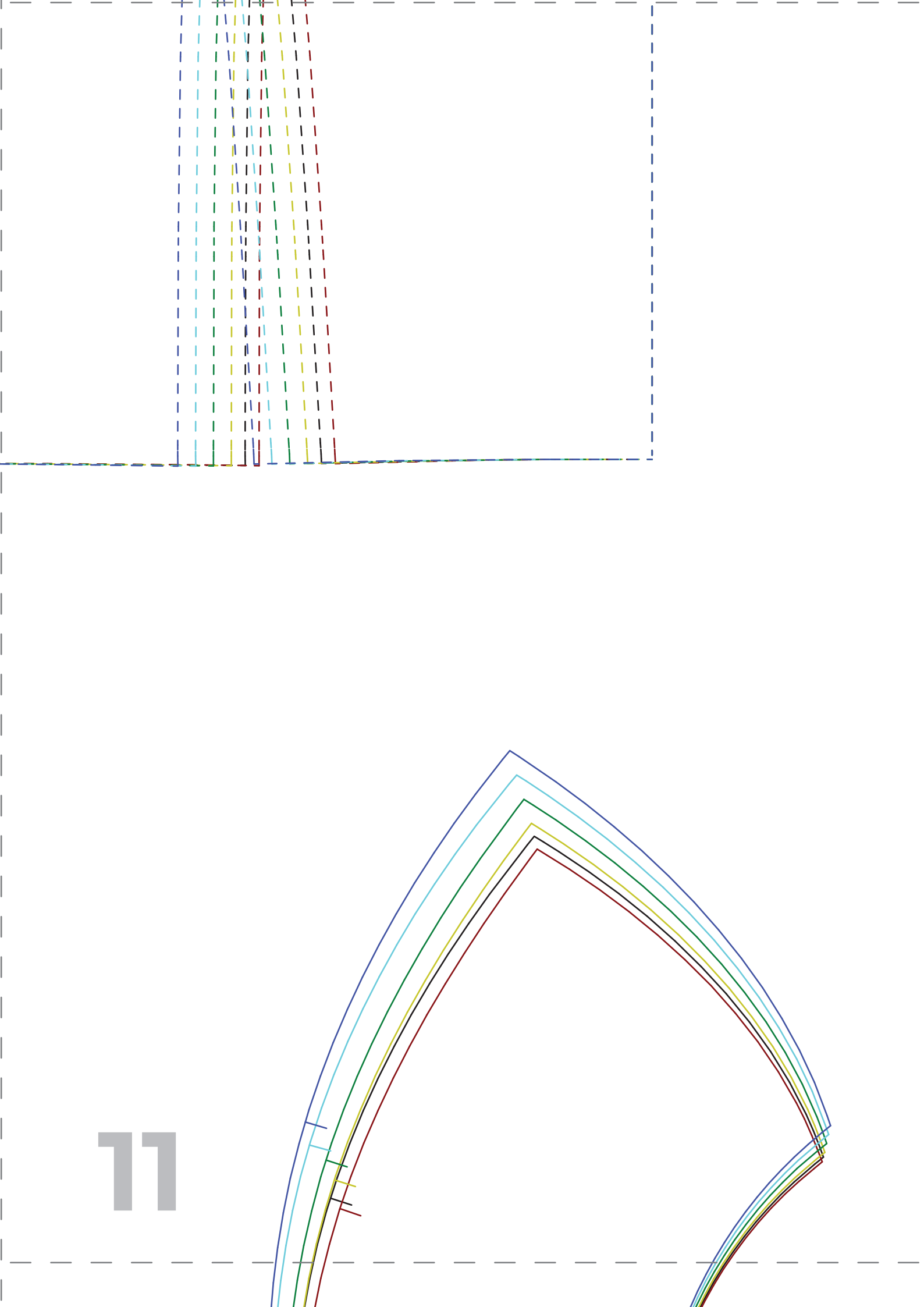
Hintere Mitte Stoffbruch Fadenlauf





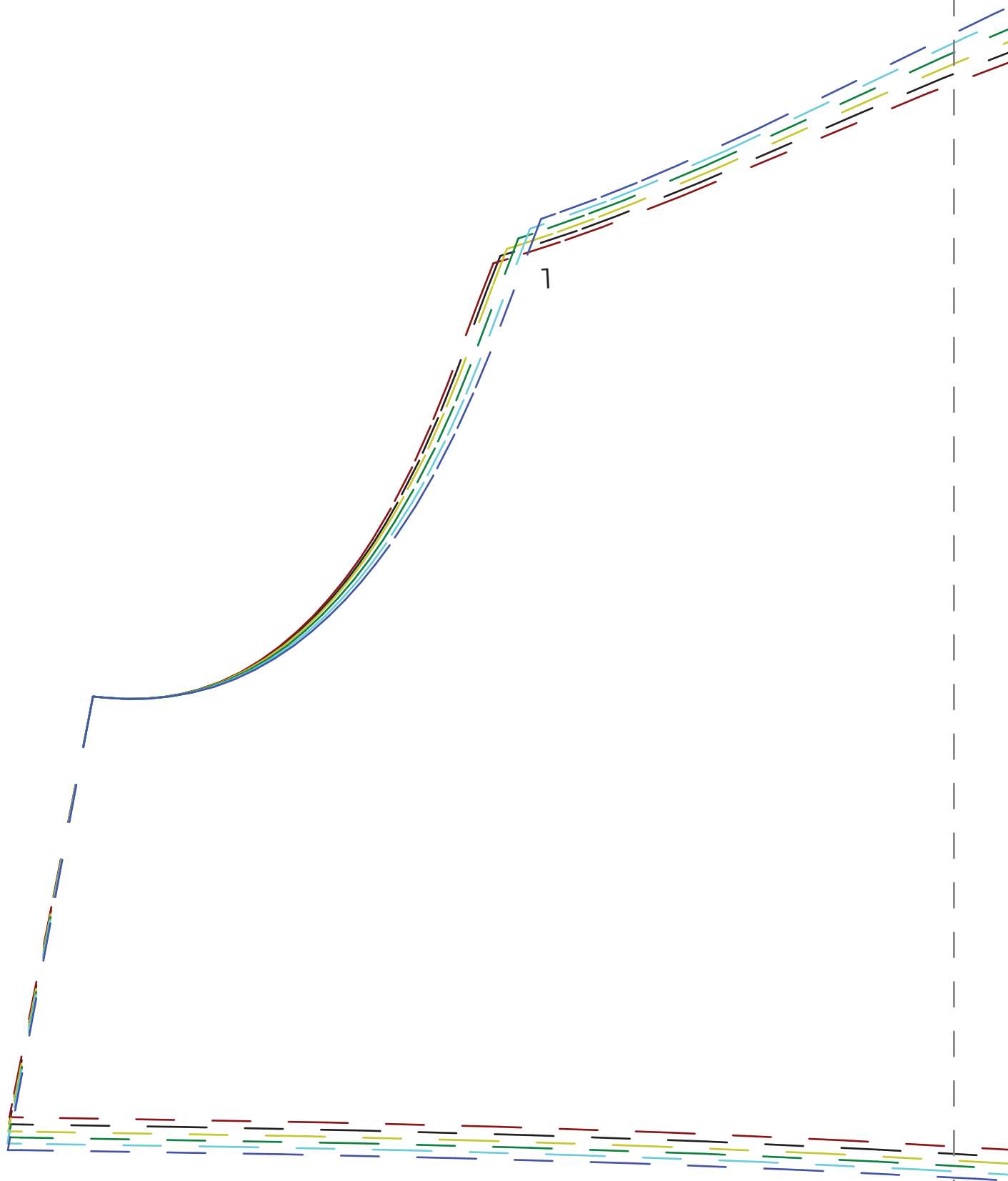
8

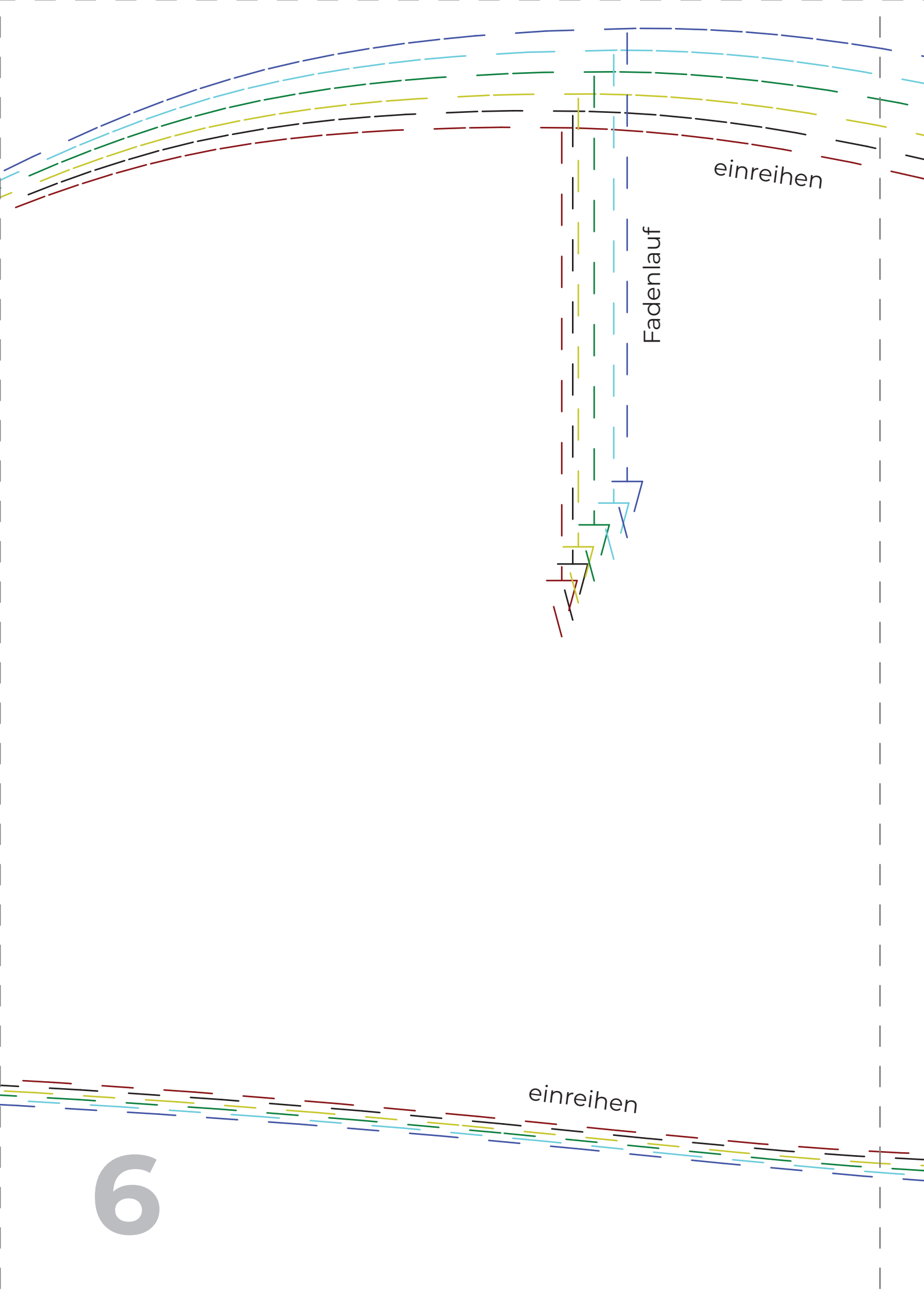




11

3



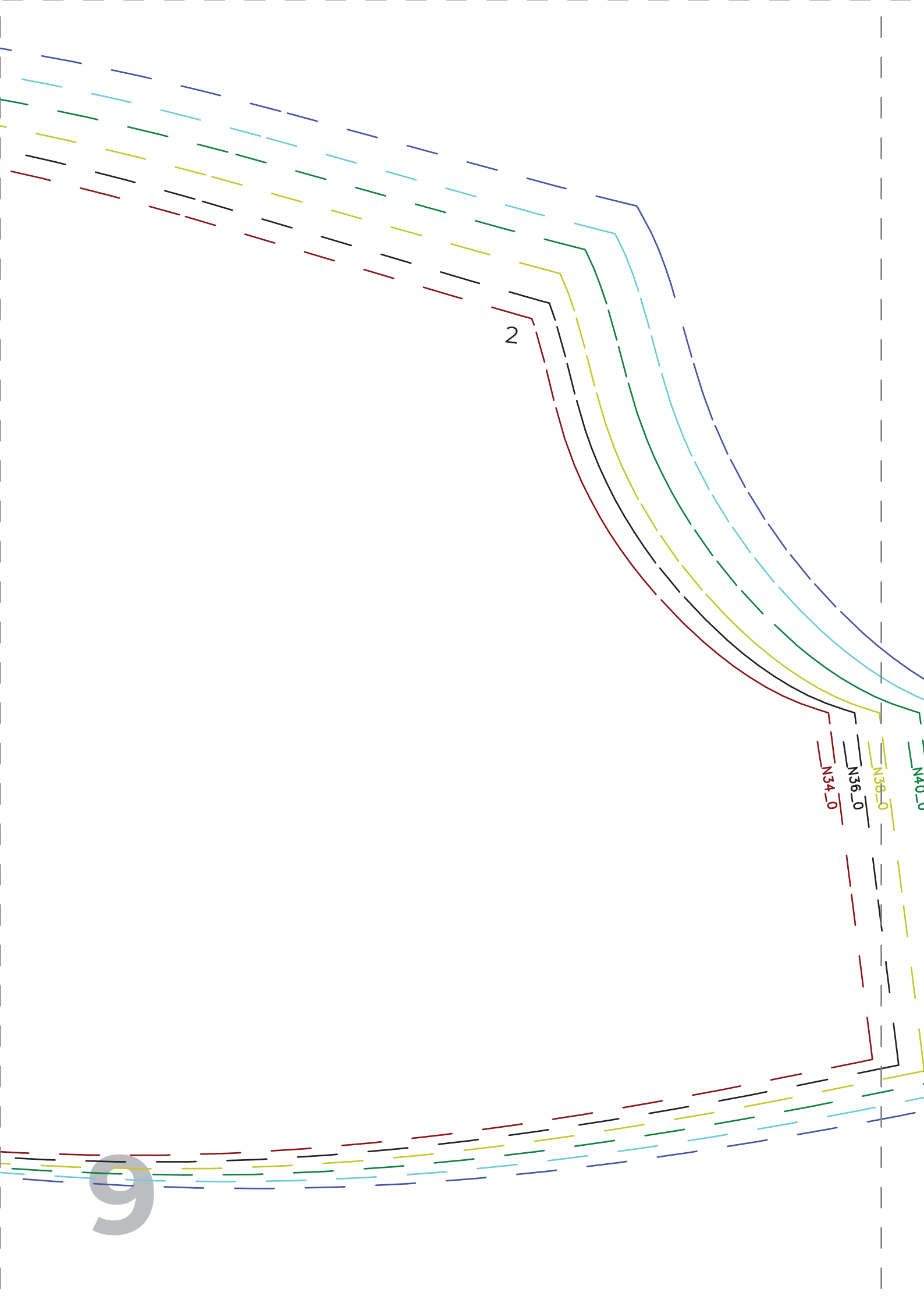


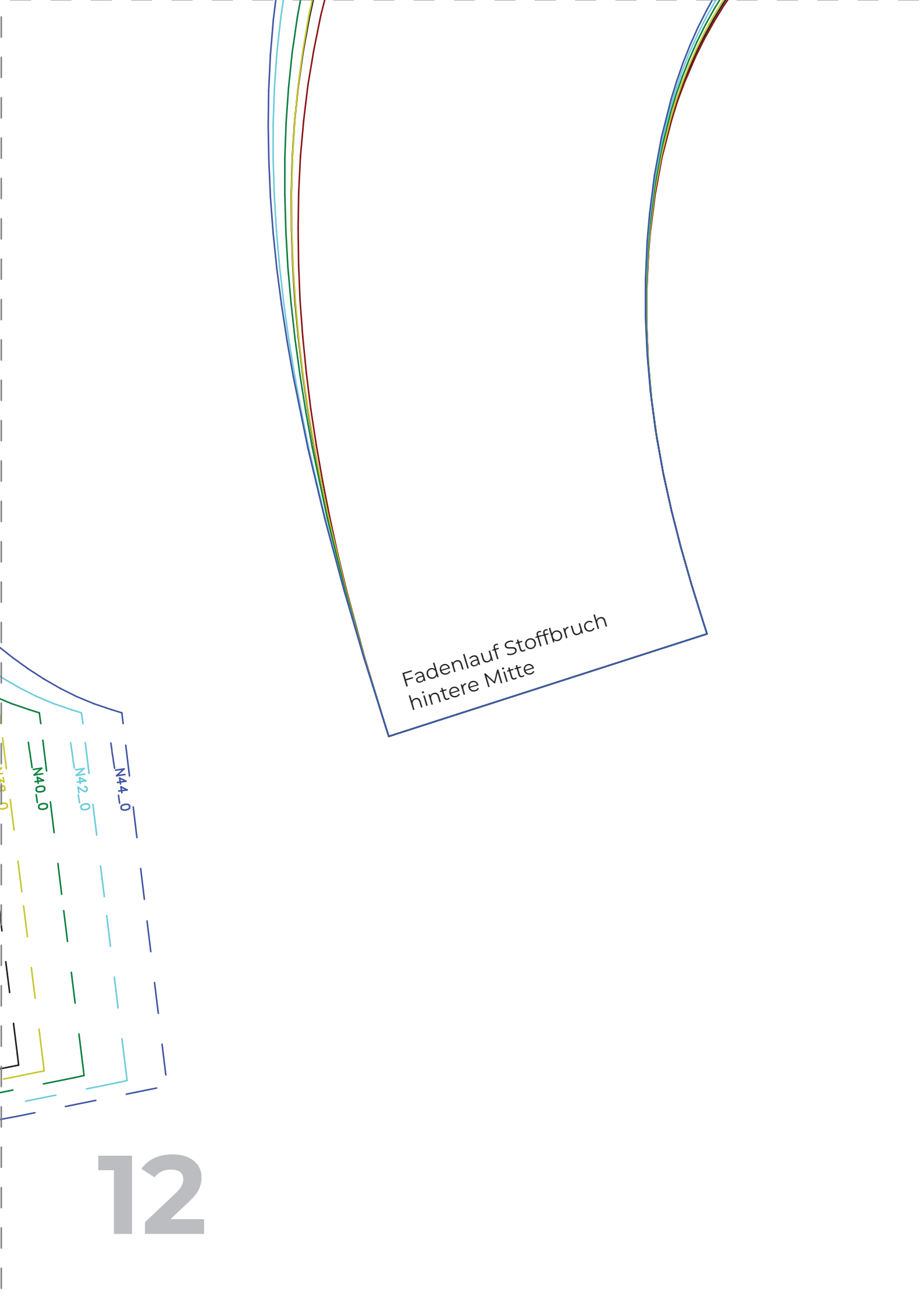
einreihen

Fadenlauf

einreihen

6





Fadenlauf Stoffbruch  
hintere Mitte

