



## TUTORIAL

TITLE **RUST-COLOURED JACKET  
WITH EMBROIDERED POCKET**

FROM THE FEATURE

Light

SISTERMAG

N°23

SIZE 10UK/8US/36EU

### MATERIALS

- » 1.3m/51.2" cotton fabric with spandex as seen at Stoffkonzepte in Dresden
- » 1m/40" lining fabric
- » Shoulder pads
- » Facing
- » Some leftover black fabric
- » Sequins and beads
- » 6 buttons
- » 1 hook

### HOW-TO

1. Cut fabric for the pocket slightly larger than desired
2. Transfer embroidery pattern and finish with sequins and beads
3. Turn over pocket piece with lining
4. Sew darts to front panels
5. Sew side panels to front panels
6. Close middle back seam up to slit
7. Sew side panels to back piece
8. Close shoulder seams
9. Iron lining on collar facing
10. Iron lining onto black fabric under collar, do the same for the yoke
11. Sew under collar and yoke together
12. Sew rust-coloured top collar and yoke together
13. Sew under collar to jacket as indicated by the numbers
14. Sew top collar to collar facing
15. Stitch collar pieces and front edges together making sure to sew on the cook along the way
16. Turn and iron (making sure to cut the edges back very closely)



**CONT.**

- 17.** Sew upper and lower sleeve together
- 18.** Finish sleeve slits
- 19.** Sew on sleeves
- 20.** Sew in shoulder pads
- 21.** Sew on pocket by hand for an invisible seam
- 22.** Sew lining jacket and attach
- 23.** Finish back slit
- 24.** Decide where to put the eye for the hook
- 25.** Stitch an eye by hand

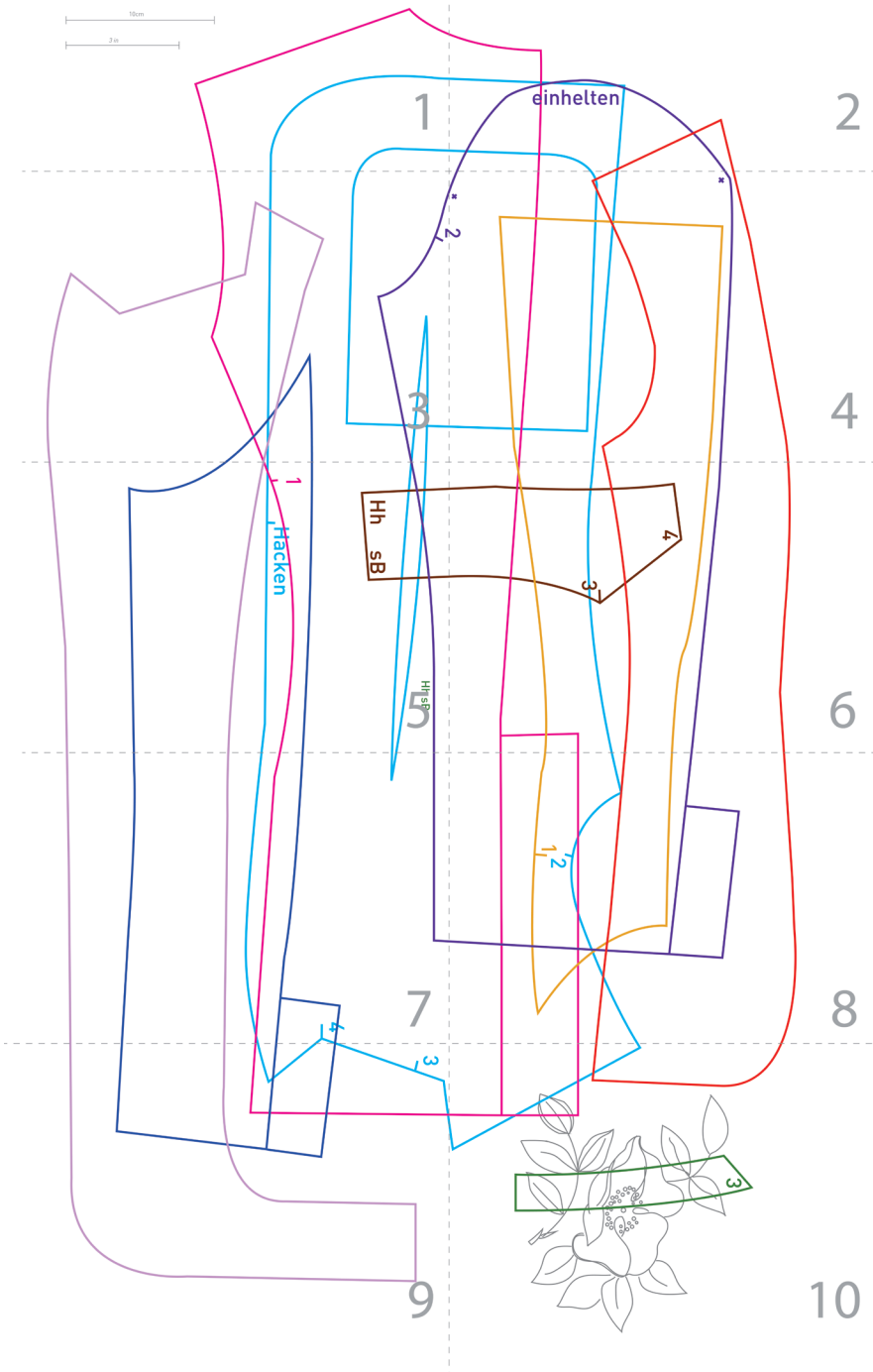


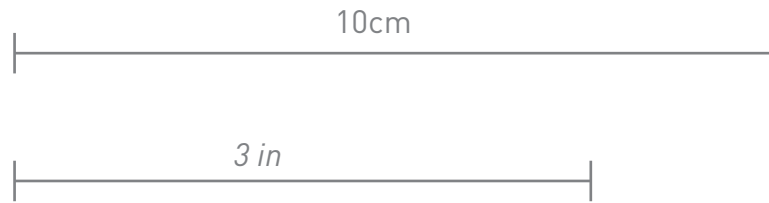
## PATTERN - OVERVIEW










sister  
MAG Rostfarbige Kostümjacke  
Ausgabe 23 // Issue 23 02/2016



- Back panel (2x in fold)
- Front panel (2x in fold)
- Side panel (2x in fold)
- Collar trimming (2x in fold)
- Forearms (2x in fold)
- Upperarms (2x in fold)
- Collar (1x in black, 1x in rust)
- Collar (1x in black, 1x in rust)
- Front panel (2x in lining)



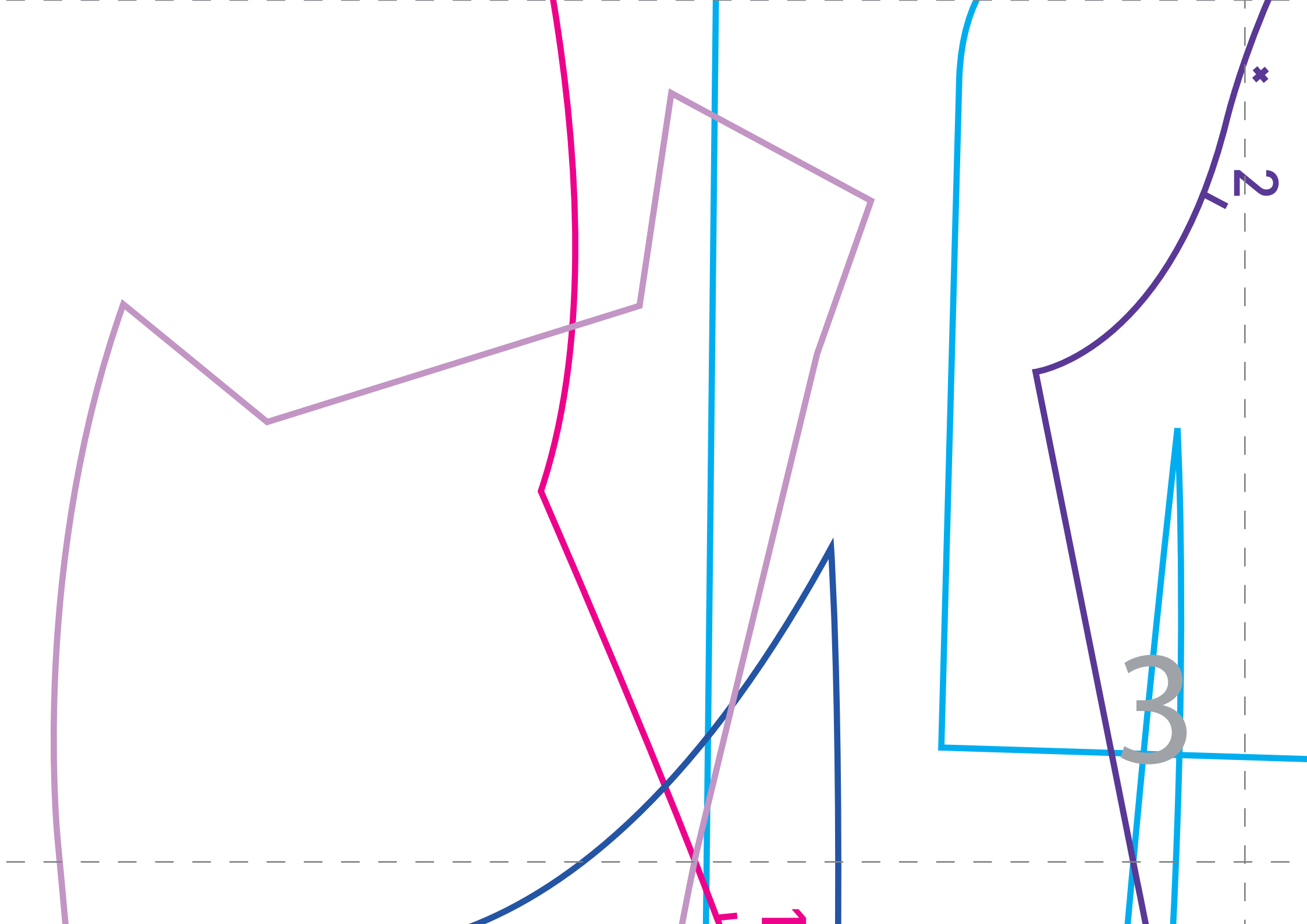


-  Rückenteil (2x im Oberstoff)
-  Vorderteil (2x im Oberstoff)
-  Seitenteil (2x im Oberstoff)
-  Krajenbesatz (2x im Oberstoff)
-  Unterärmel (2x im Oberstoff)
-  Oberer Ärmel (2x im Oberstoff)
-  Kragen (1x schwarz, 1x rost)
-  Kragen (1x schwarz, 1x rost)
-  Vorderteil (2x aus Futter)

einhalten

2





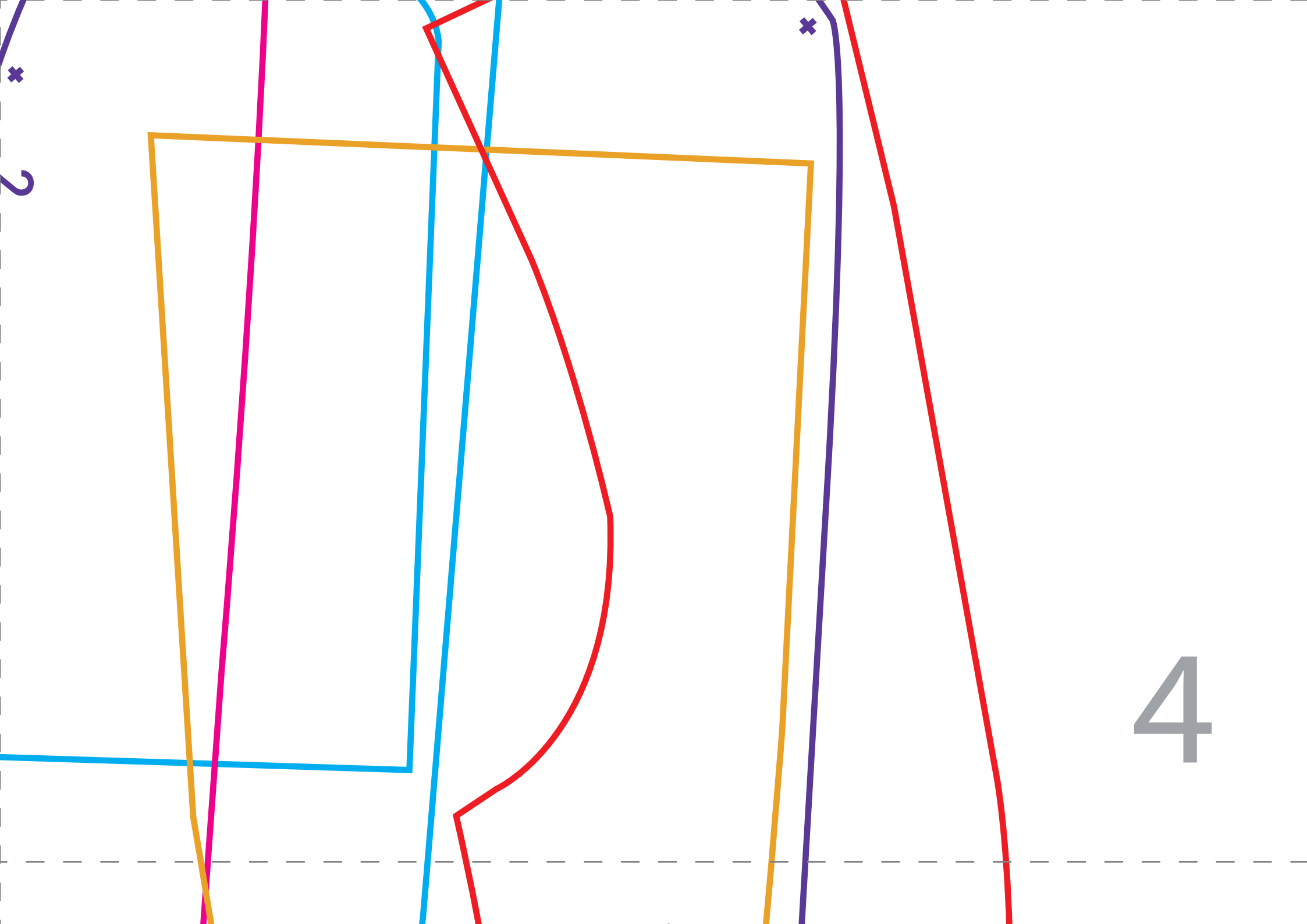
\*

2

1

3

1



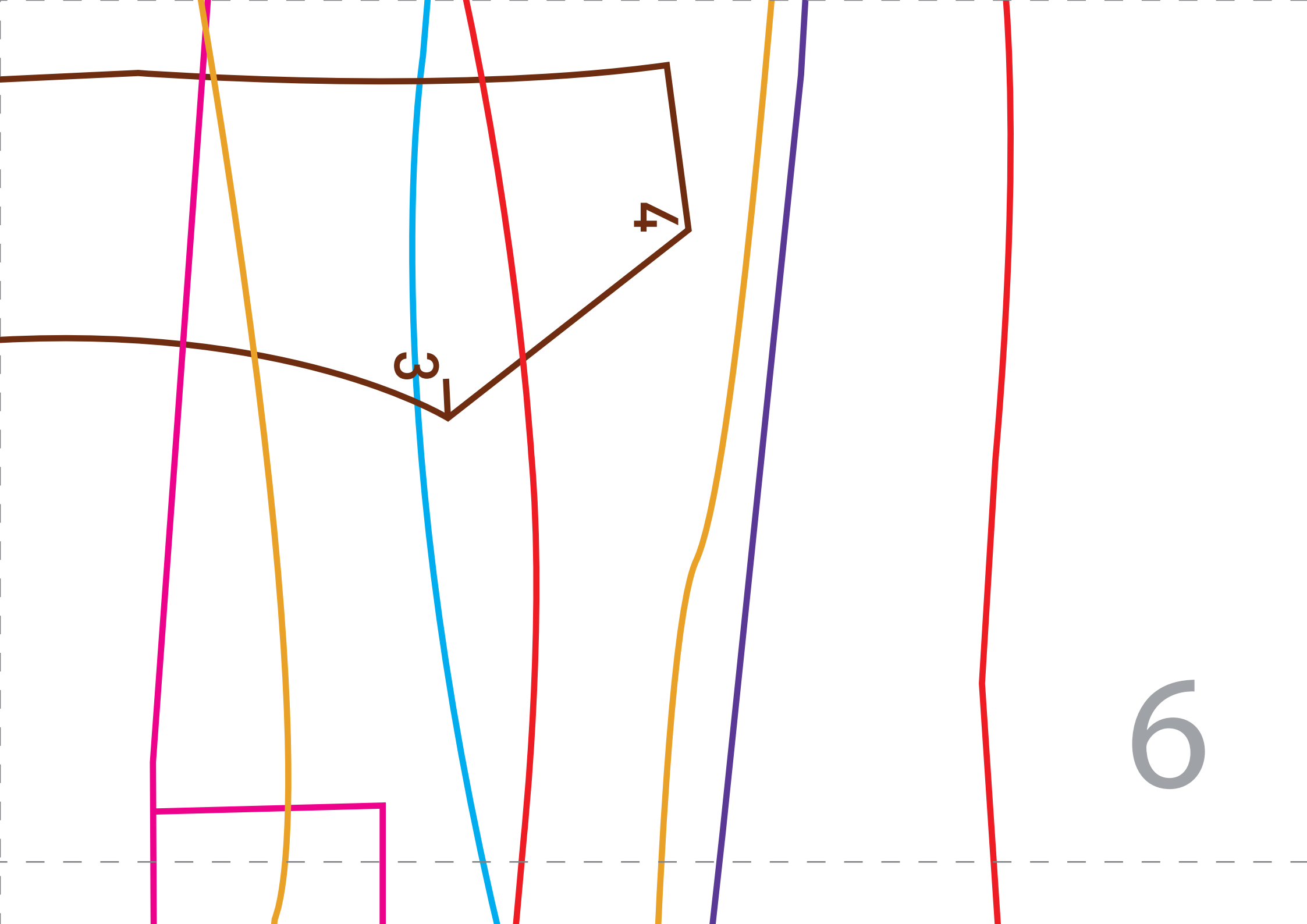
4

Hh SB

Hh SB

1 Hacken

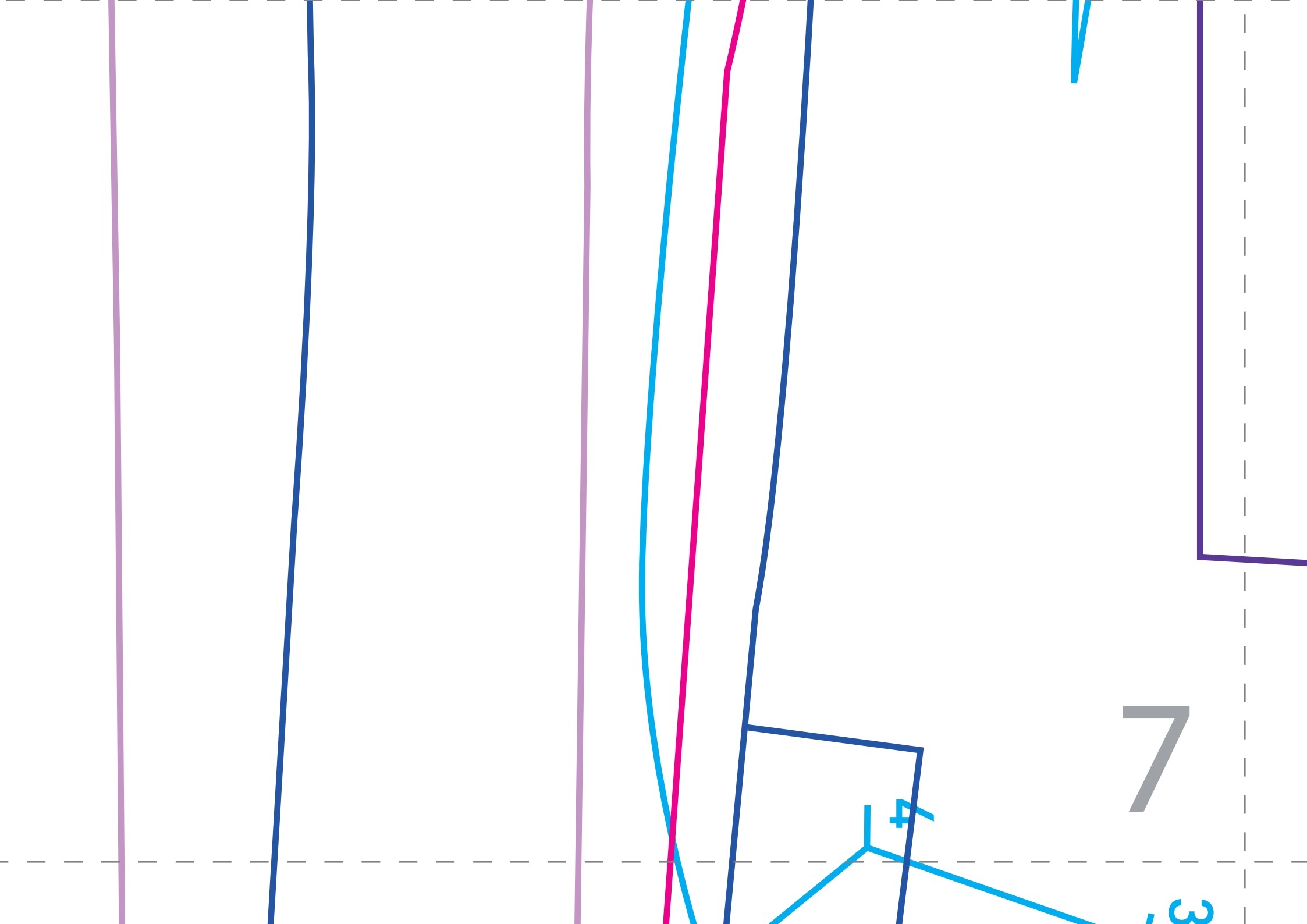




4

3

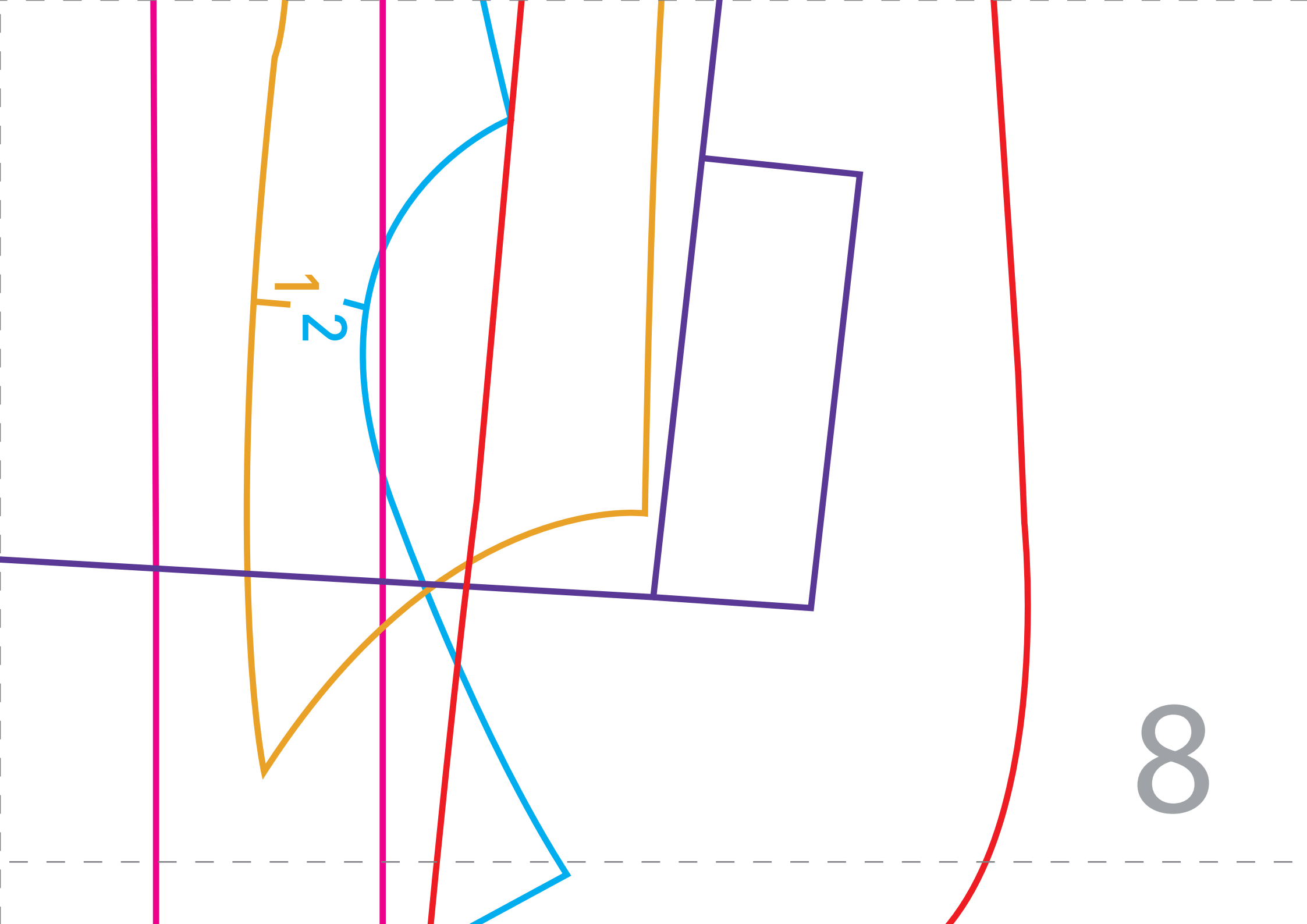
6



7

7

3

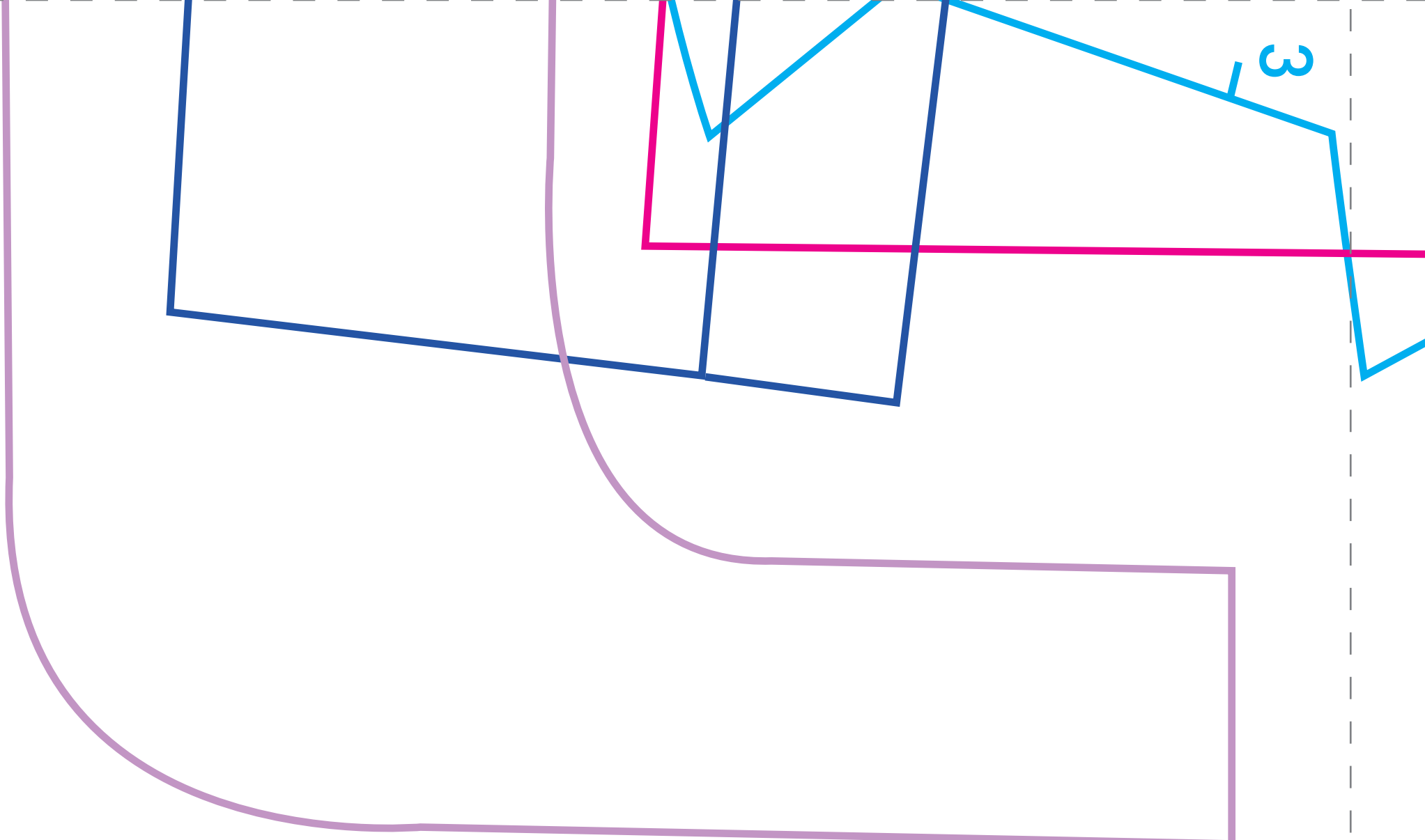


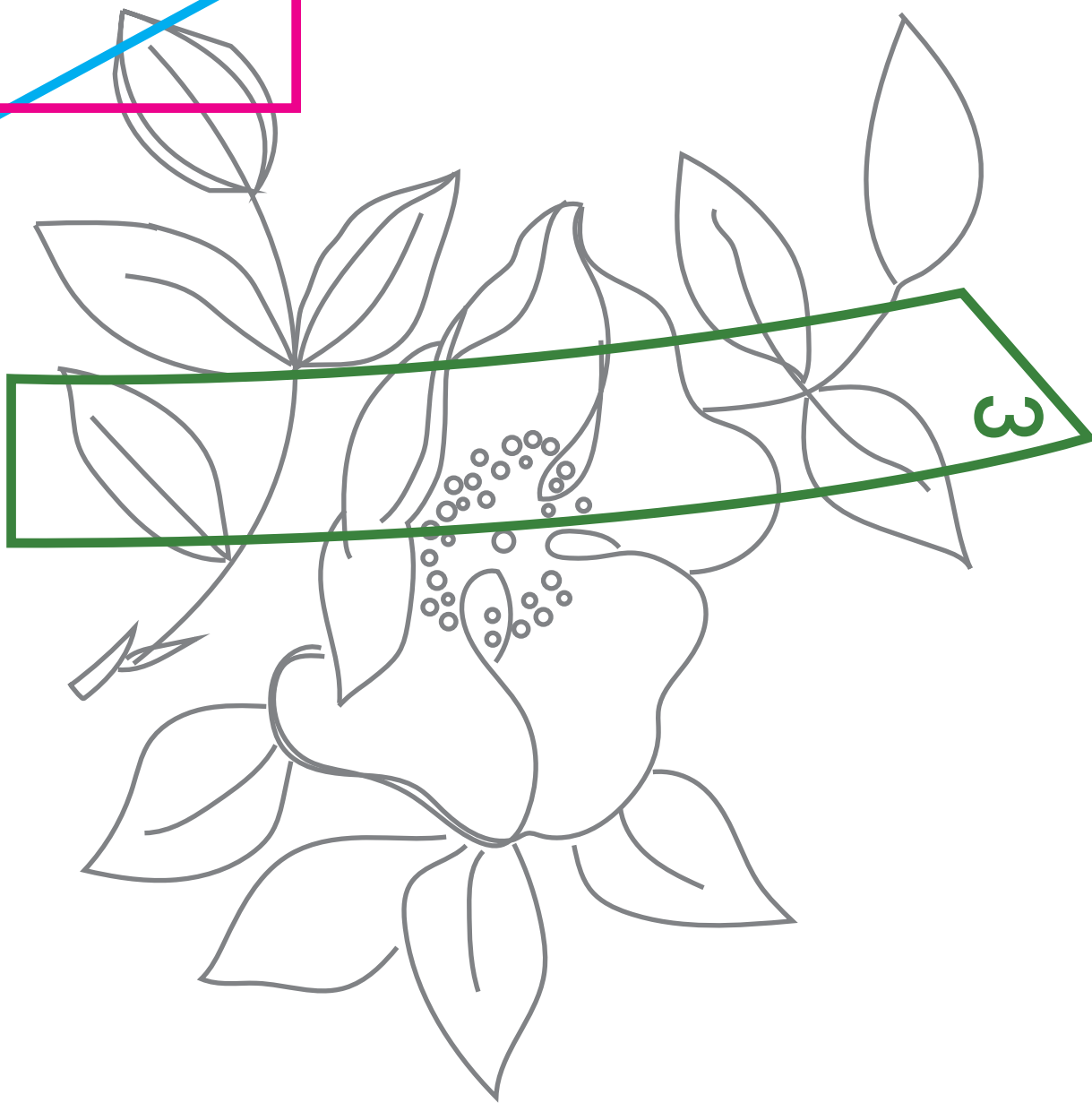
1  
2

8

3

9





10