



INSTRUCTIONS



TITLE

FLOWERY BLOUSE

FEATURE

Tulle in Dublin

SISTERMAG

N°13

MATERIALS

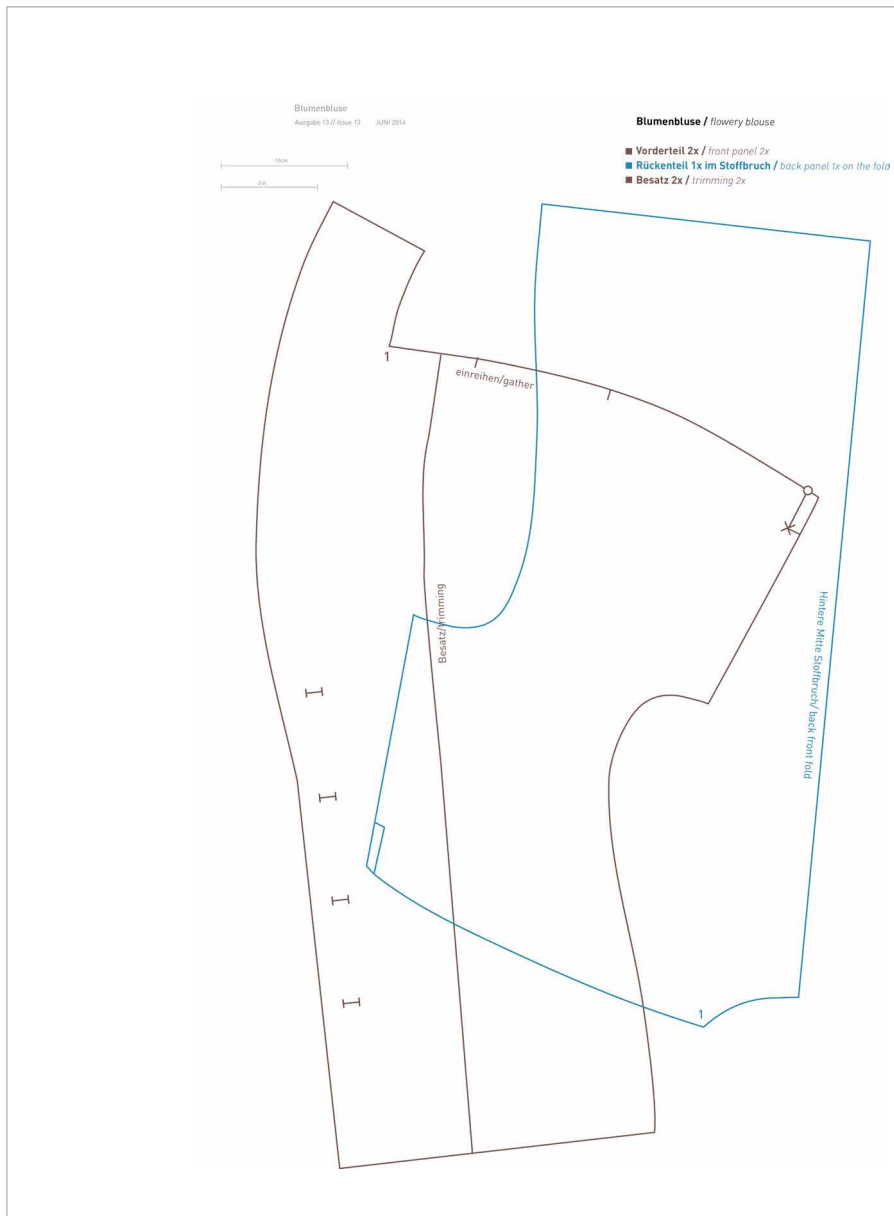
- » 1.5 m softly falling viscose or cotton fabric
- » 4 buttons

STEPS

1. Cut the cuffs in format 35cm x 7cm
2. Gather the front panel for the shoulder as it is shown
3. Close the rear shawl collar seam
4. Sew the shoulder seams and back neck edge and check the numbers in the pattern
5. Close the side seams
6. Close the rear seam at the trimming
7. Fold over the front with right sides facing and sew
8. Turn over and iron
9. Sew the neckline edge of the trimming by hand so it does not show
10. Fold pleats at the sleeve edges and stitch in place
11. Work the cuffs and sew them
12. Stitch on the seam
13. Sew buttonholes and sew on buttons



PATTERN OVERVIEW



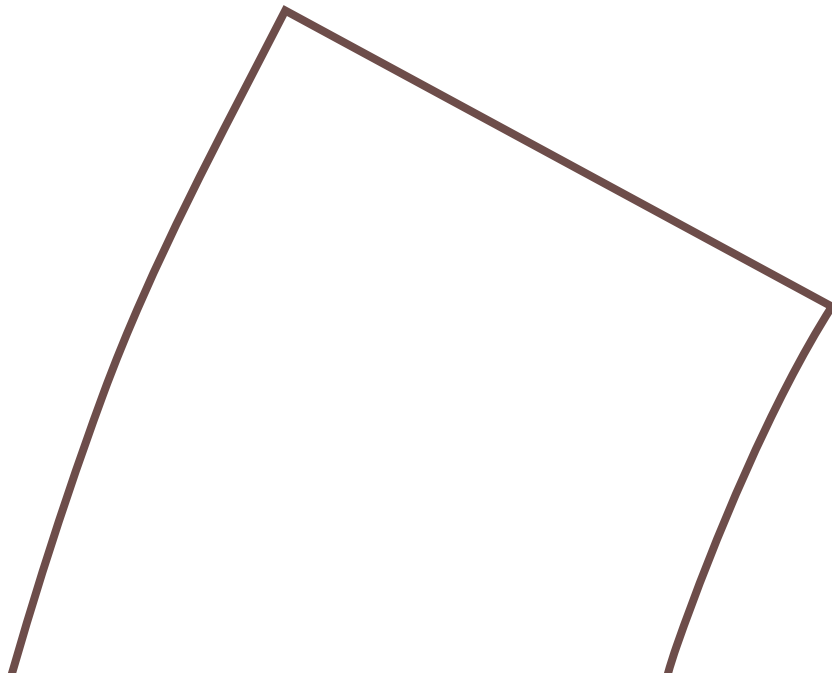
- Vorderteil 2x / front panel
- Rückenteil 1x im Stoffbruch / back panel 1x in fold
- Besatz 2x / trimming 2x

SISTER
MAG

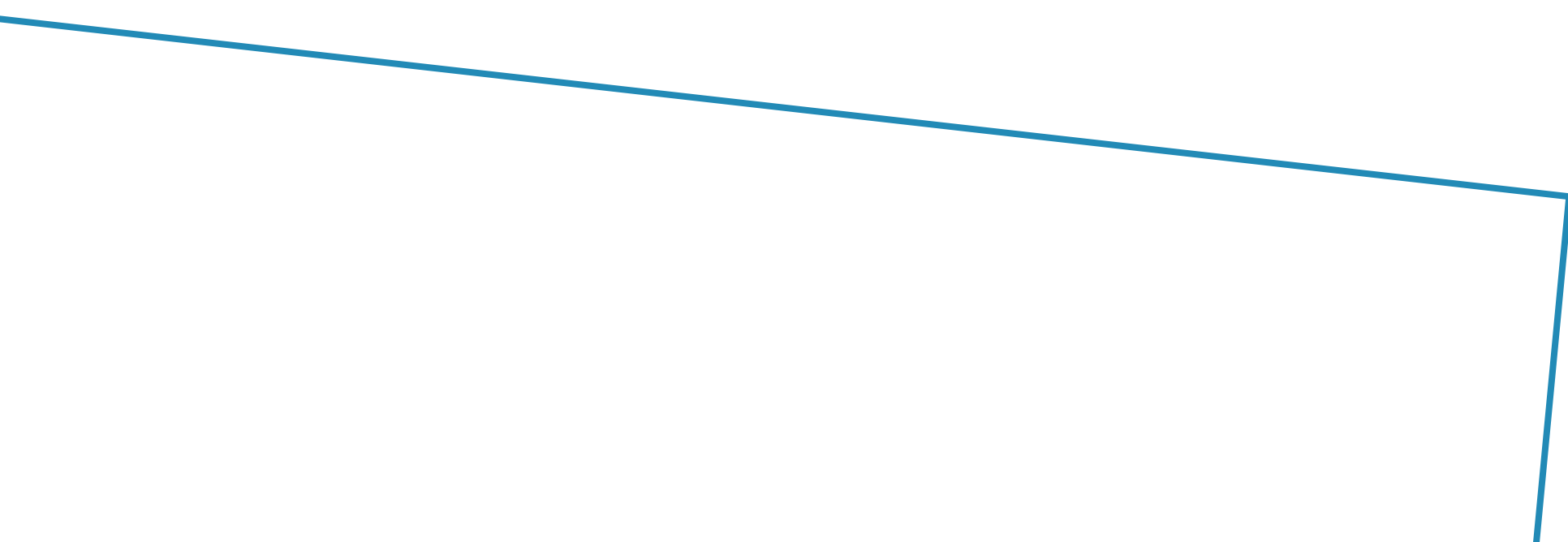
Blumenbluse

Ausgabe 13 // Issue 13

JUNI 2014

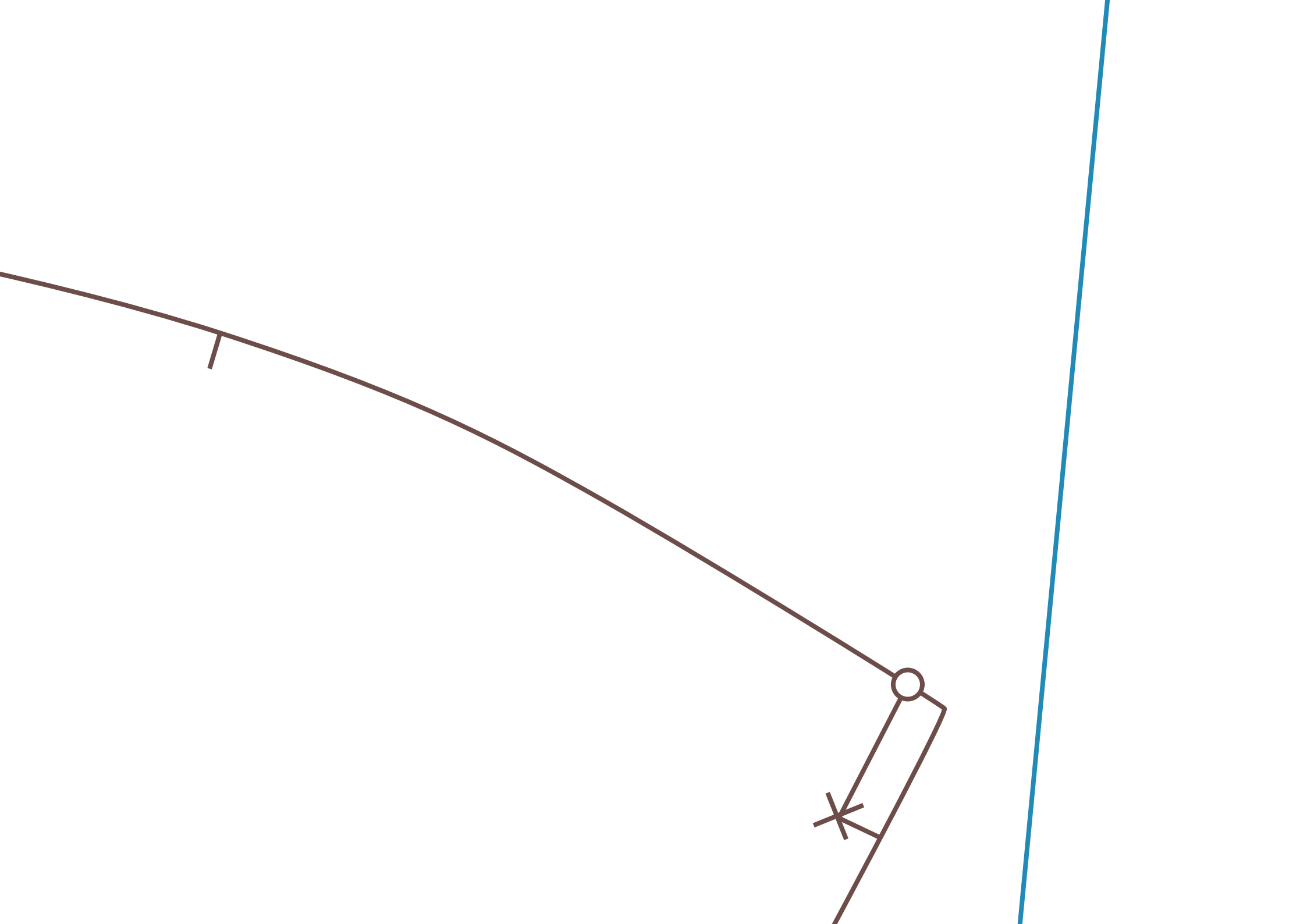


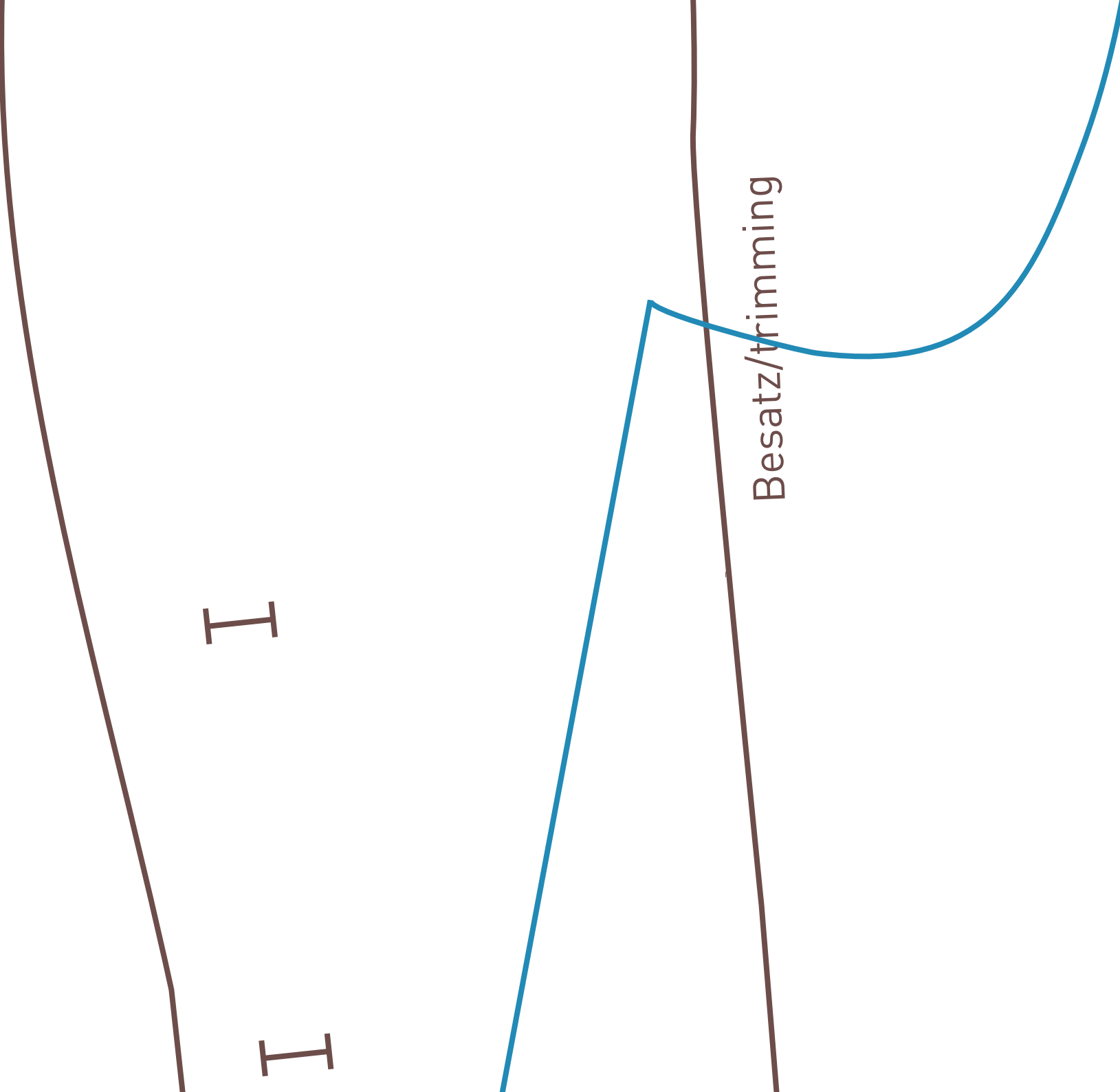
Blumenbluse / *flowery blouse*

- **Vorderteil 2x** / *front panel 2x*
 - **Rückenteil 1x im Stoffbruch** / *back panel 1x on the fold*
 - **Besatz 2x** / *trimming 2x*
- 

1

einreihen/gather



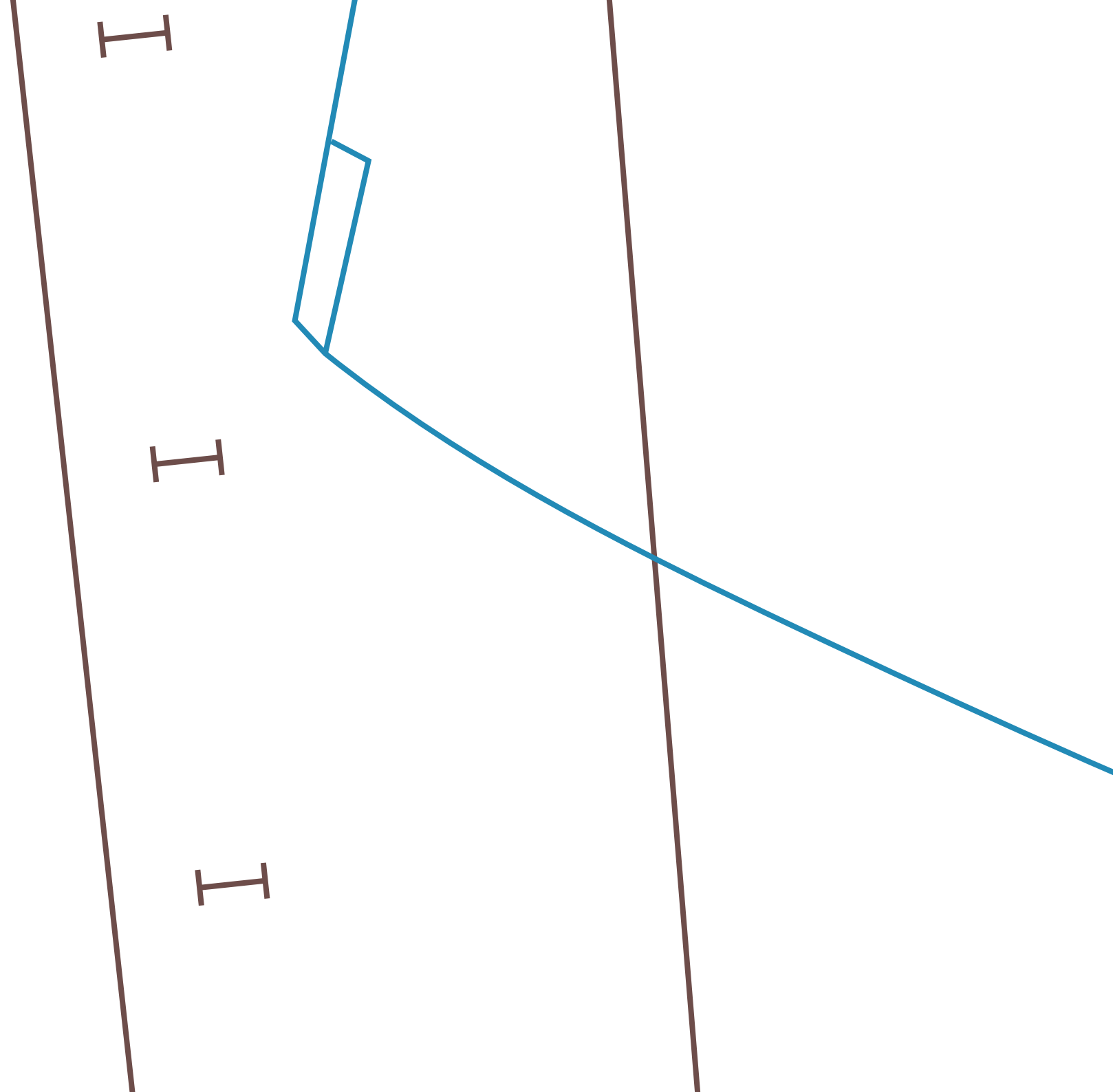


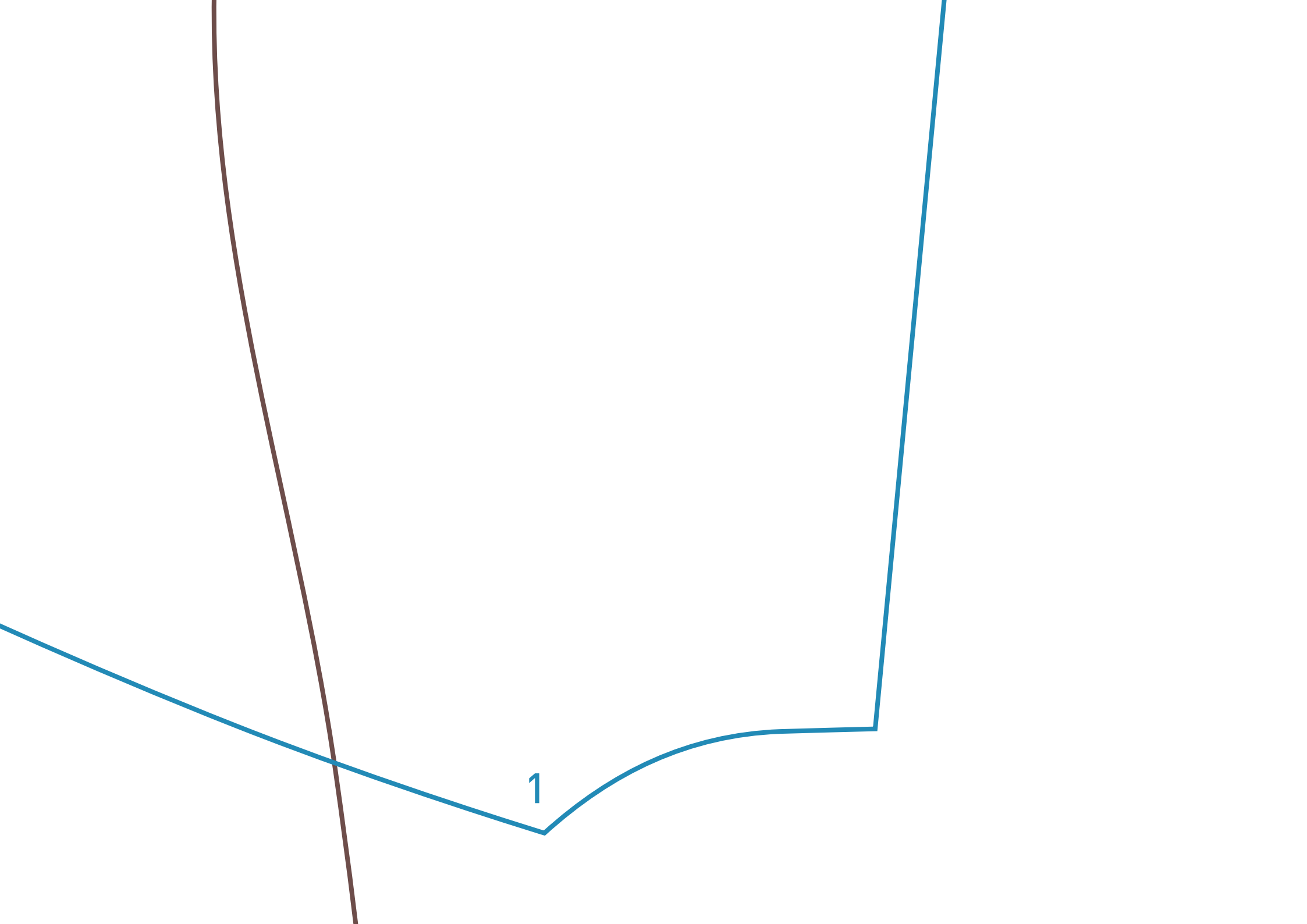
I

I

Besatz/trimming

Hintere Mitte Stoffbruch/ back front fold





1

