

SISTER
N°11 | MAG



TUTORIAL



TITLE

Velvet Mini Dress

FROM THE FEATURE

Encrusted – The Looks

SISTERMAG

N°11

SIZE 36-38 / UK 8-10 /
US 4-6

MATERIALS

- » 1 m softly falling velvet
- » invisible zipper 50 cm
- » scraps of lining
- » rhinestones, pearls

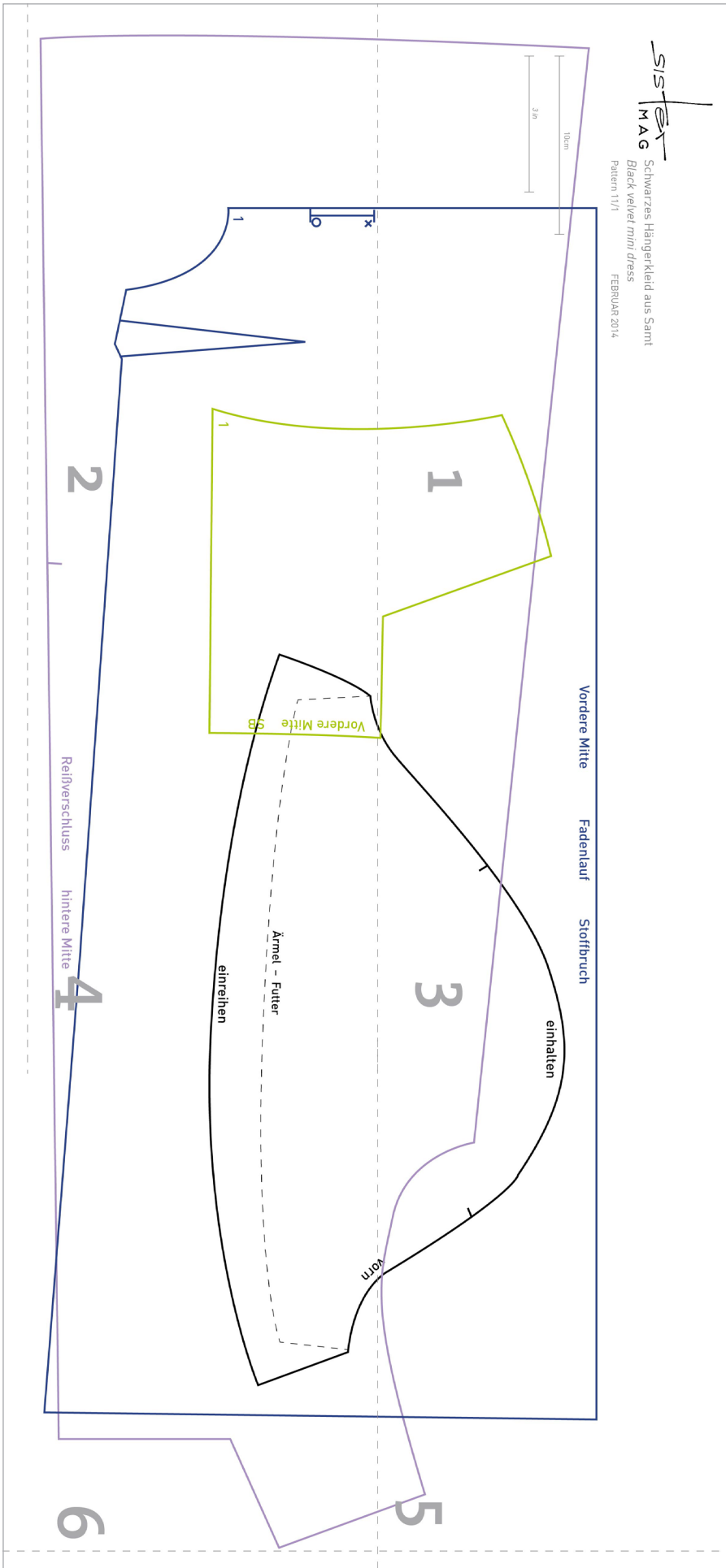
HOW-TO

1. When cutting the pattern pay attention to the direction of the nap, cutting against the nap might cause differences in colour.
2. Take in the darts.
3. Place the pleats in the front x on o and tack them together.
4. Sew the yoke to the front part.
5. Sew the middle seam in the back up to the mark for the zipper. Sew in the zipper.
6. Close the side and shoulder seams.
7. Sew the seams along the sleeves, gather the lower seams of the sleeves.
8. Close the seams of the lining of the sleeves. Place the lower edge of the lining of the sleeves face to face on the gather edge of the sleeves, sew together and turn. This way the sleeves should fluff up a little bit.
9. Add the sleeves to the dress.
10. Cut trimmings from lining material. Turn over the trimmings with the neckline.
11. Sew on rhinestones and pearls according to taste.



PATTERN OVERVIEW

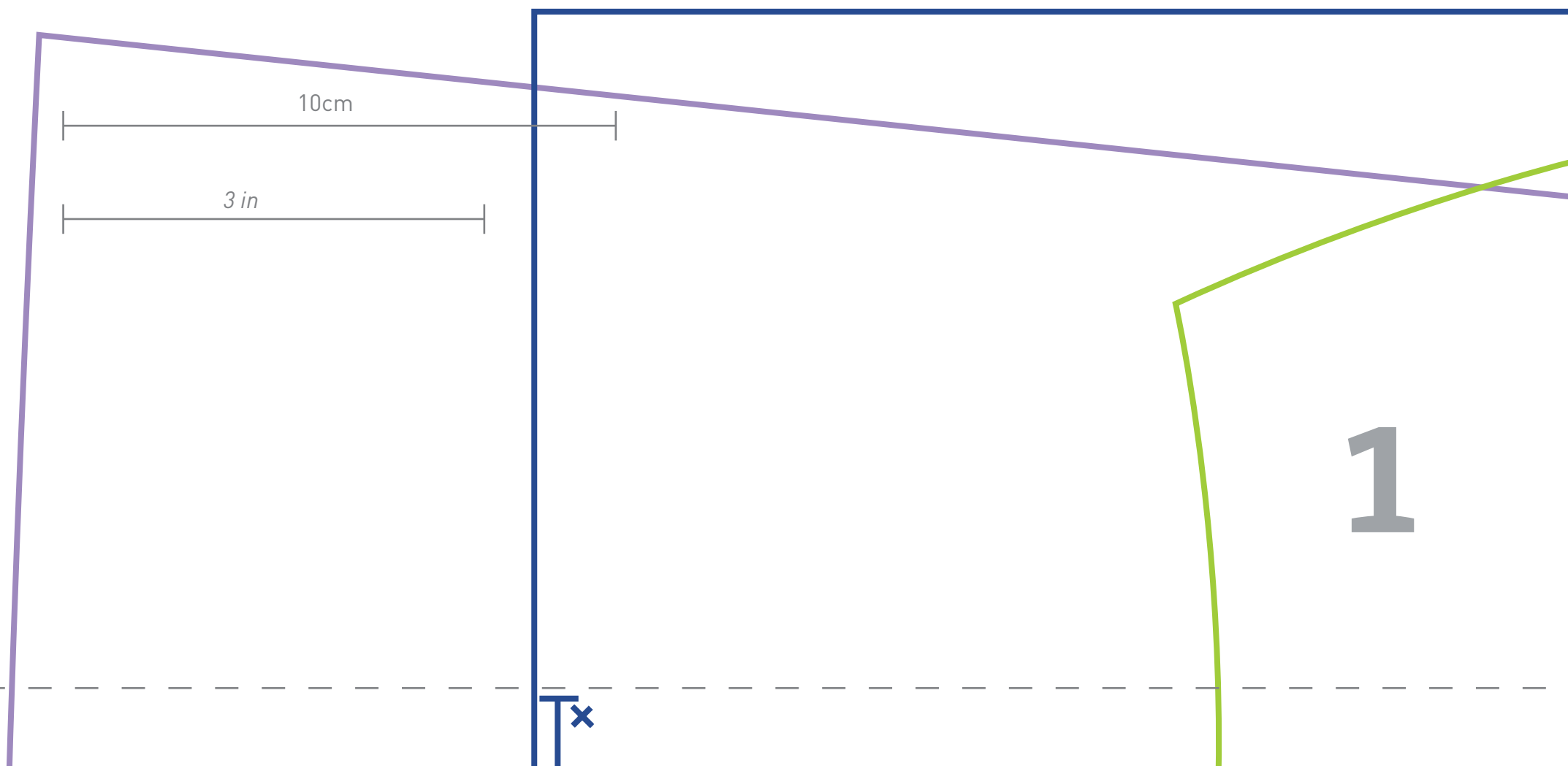
-  back panel (2x)
-  sleeves (2x)
-  yoke (1x to fold)
-  front panel (1x to fold)



Schwarzes Hängerkleid aus Samt
Black velvet mini dress

Pattern 11/1

FEBRUAR 2014



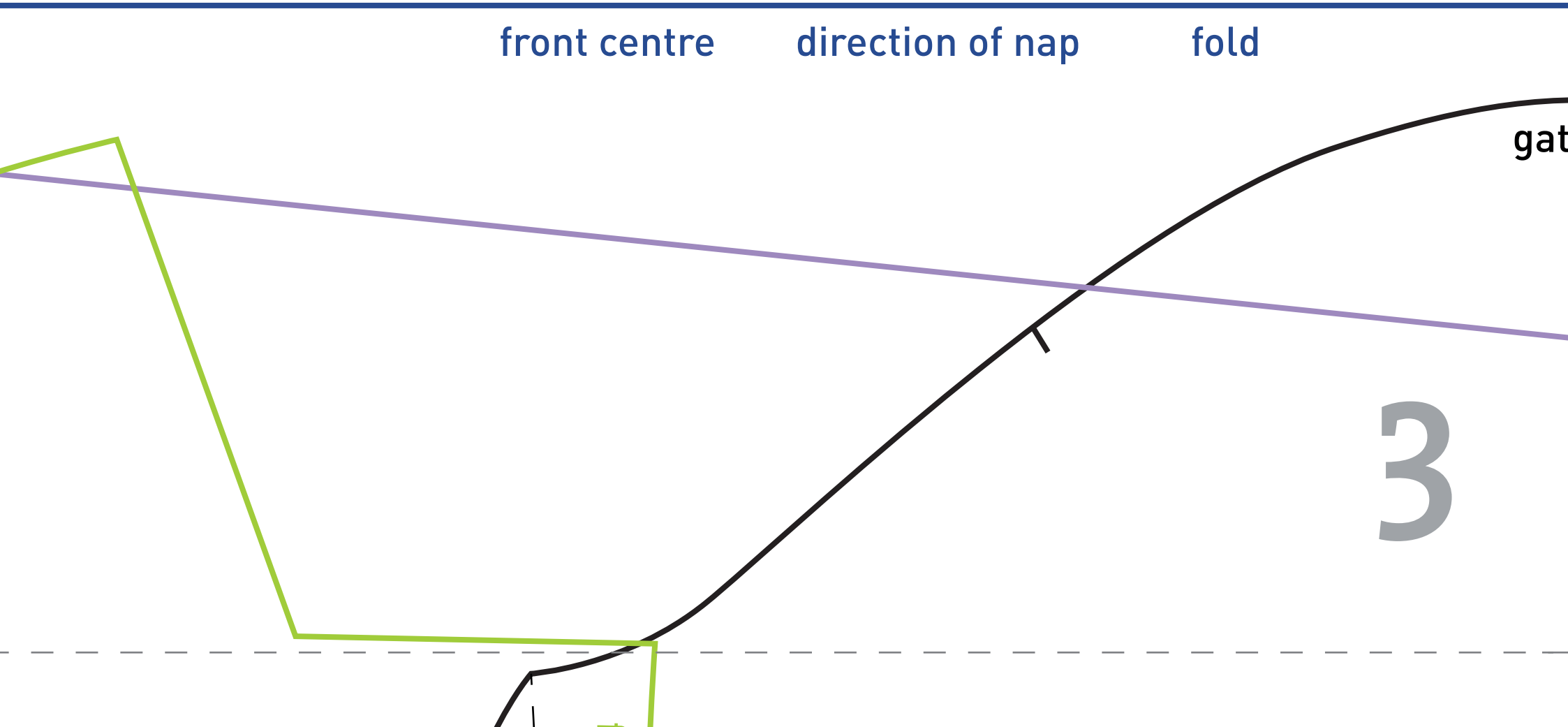
front centre

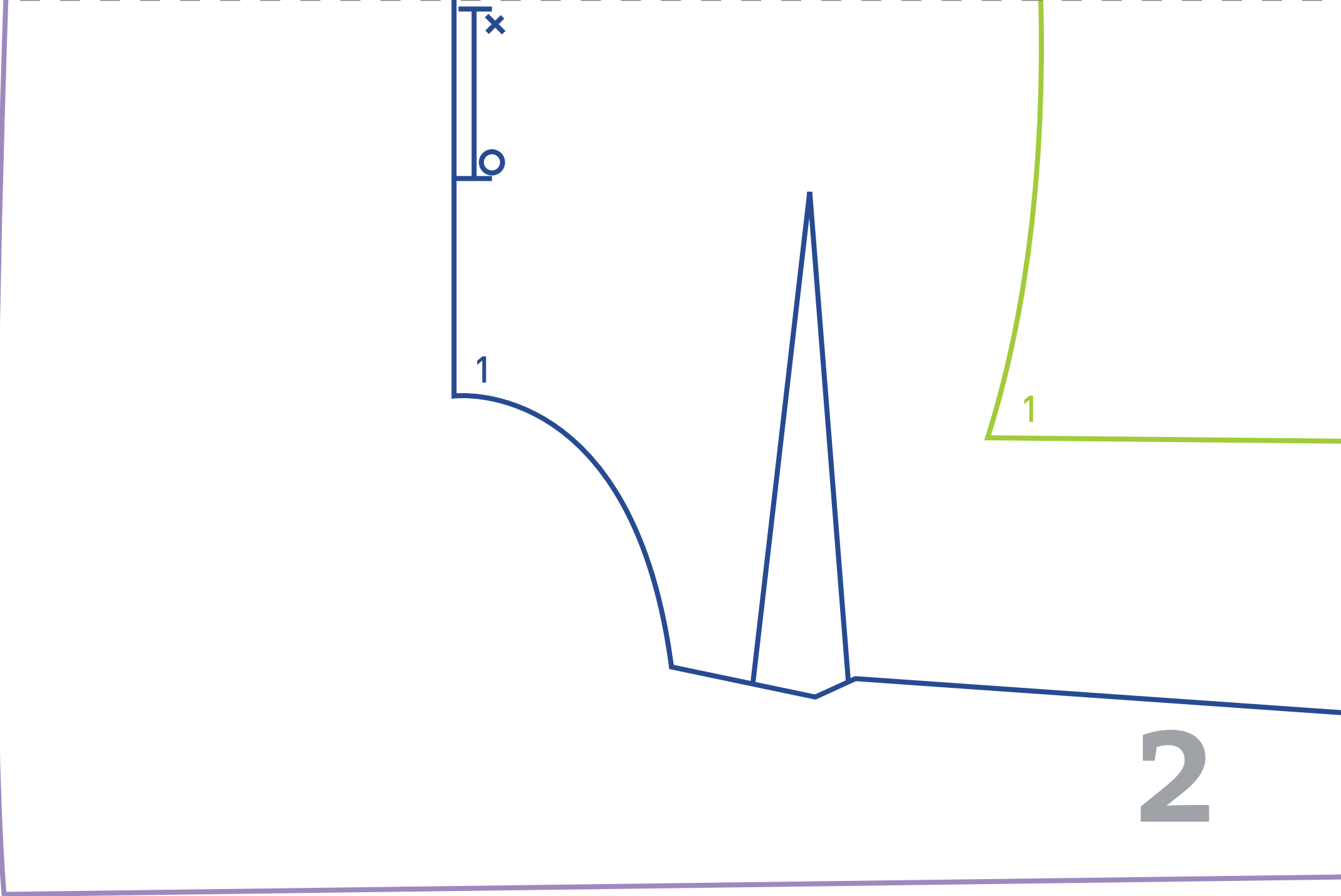
direction of nap

fold

gat

3





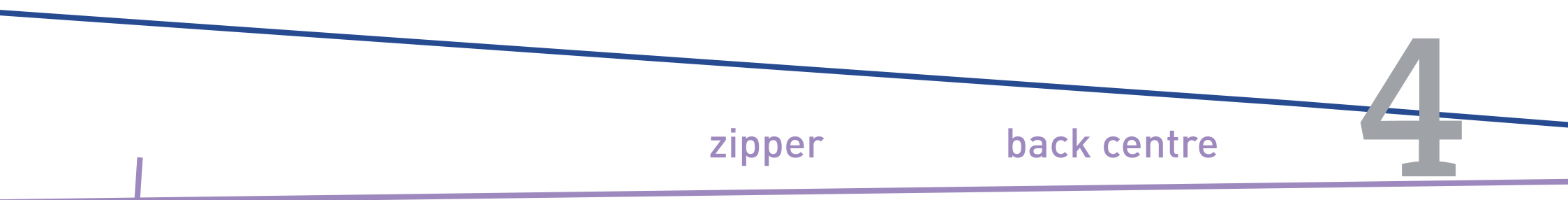
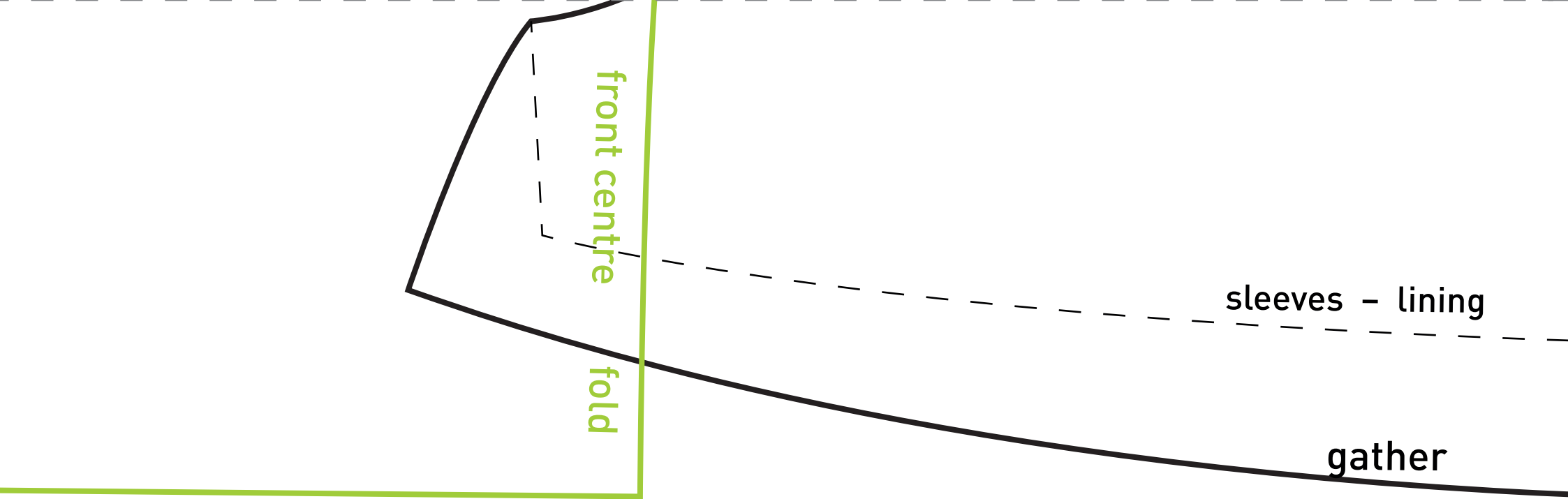
x

o

1

1

2

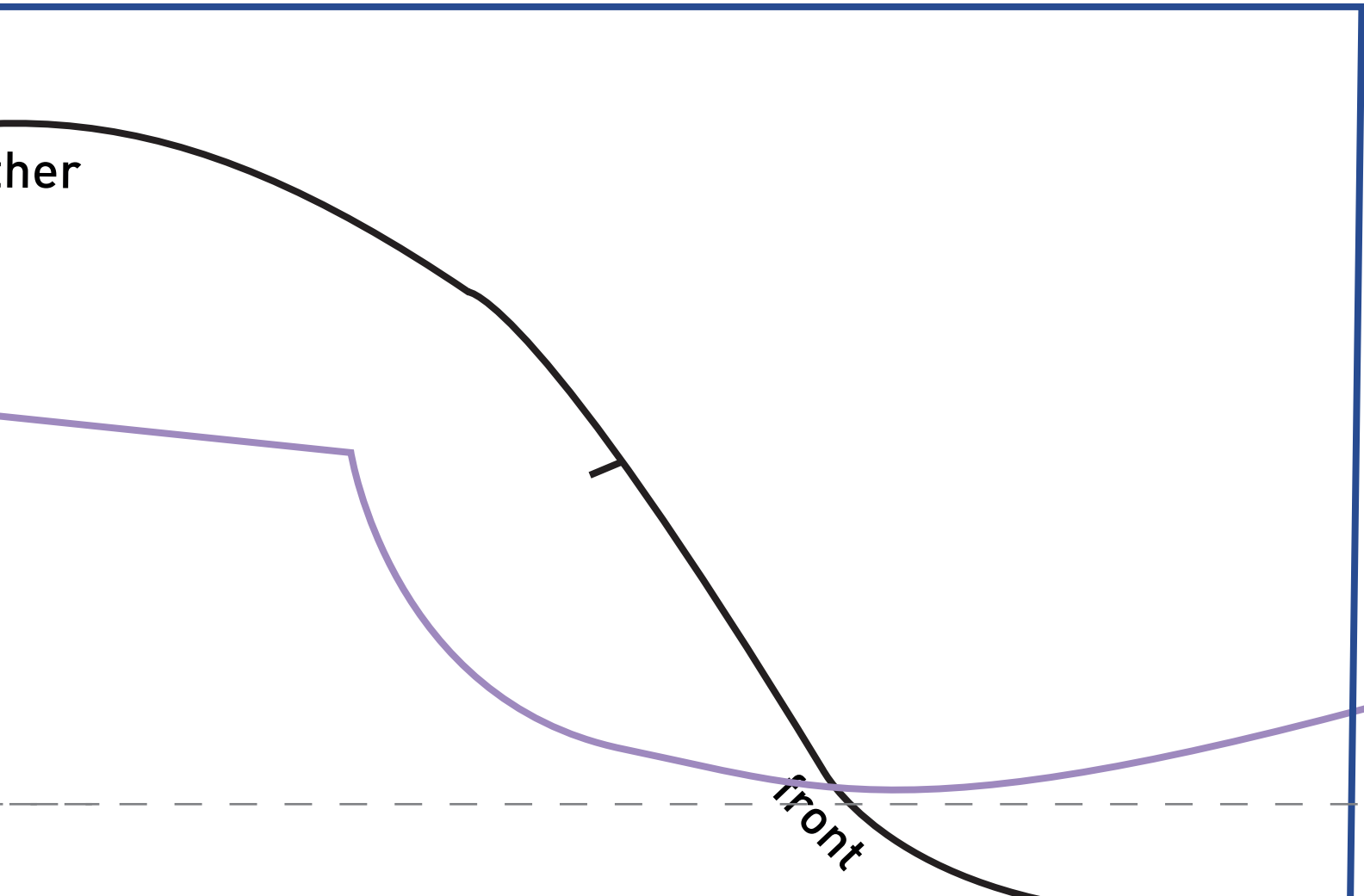


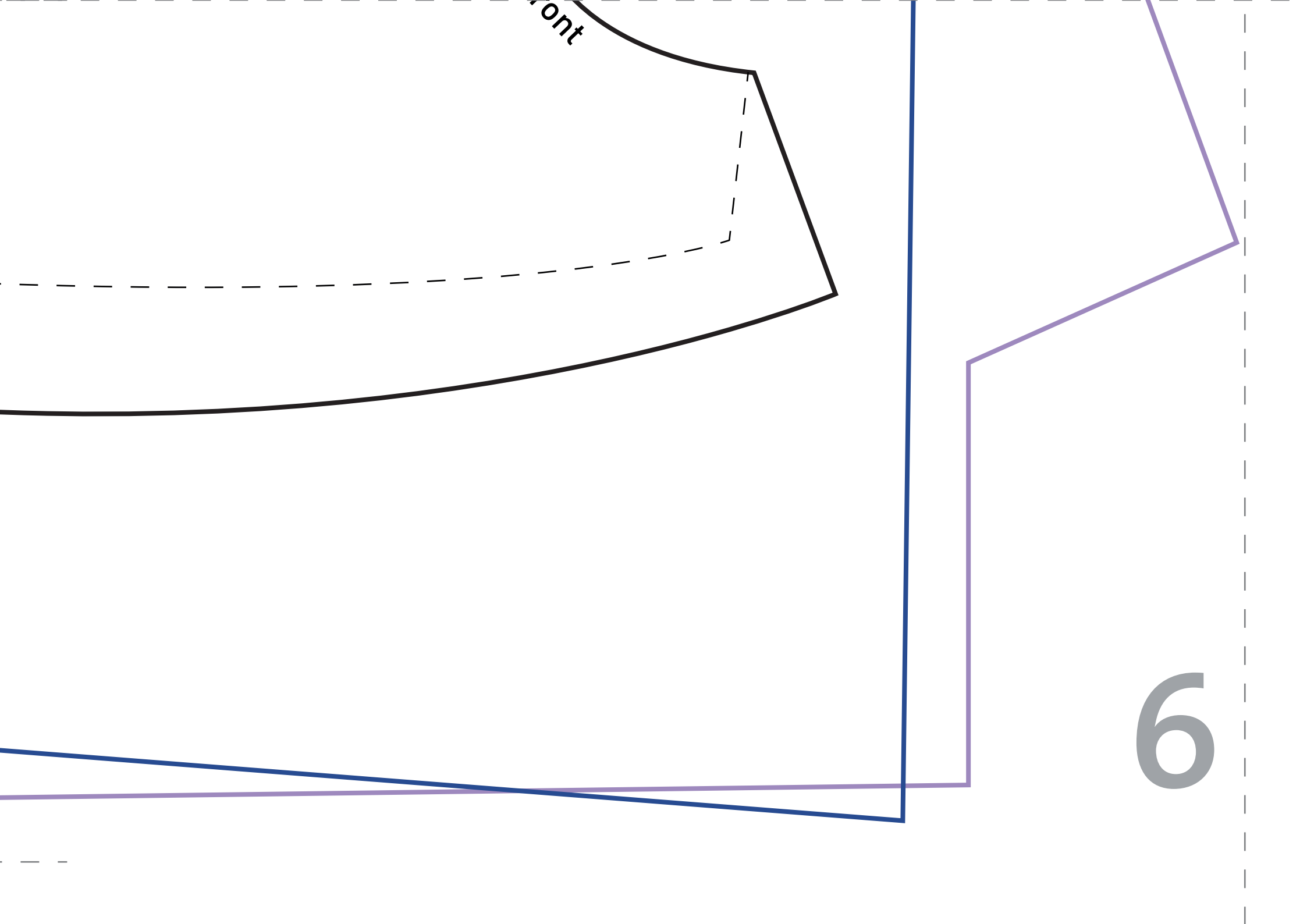
her

1

front

5





front

6