



SISTER
N°11 MAG



emma-blak



TUTORIAL

TITLE

YELLOW CORD COAT

PATTERN N°

12/5



FROM THE FEATURE

Candy& Coffee – Jackets, Coats

SISTERMAG

N°12

SIZE 36/38

MATERIALS

- » 1,8 m yellow coloured cord fabric
- » rest cotton lace
- » 1,5 m interlining
- » 7 buttons

HOW-TO

1. Sew flap pockets into front part (red)
2. Close back seam until the slit
3. Close side and shoulder seams
4. Iron the front trimming, which you should have already cut in
5. Sew cuff-adjusters, topstitch and put in buttonholes
6. Back-stitch the cuff-adjusters onto the sleeves as marked in the pattern, close upper and down sleeve seam. Put in the sleeves into the coat.
7. Lay out lace onto the collar piece and sew on rhinestones (see a detailed view of the collar in sisterMAG N°12, page 63)
8. Turn over collar pieces
9. Sew interlining
10. Iron sleeve and coat hems and work the walking slit of the coat
11. Sew in interlining
12. Put in collar piece, taking care of the marks in the pattern. Sew in buttonholes.
13. Sew on buttons on sleeves and the front part of the coat.

SISTER
MAG 12/5

Gelber Mantel / Yellow Coat

Ausgabe 12 // Issue 12 APRIL 2014

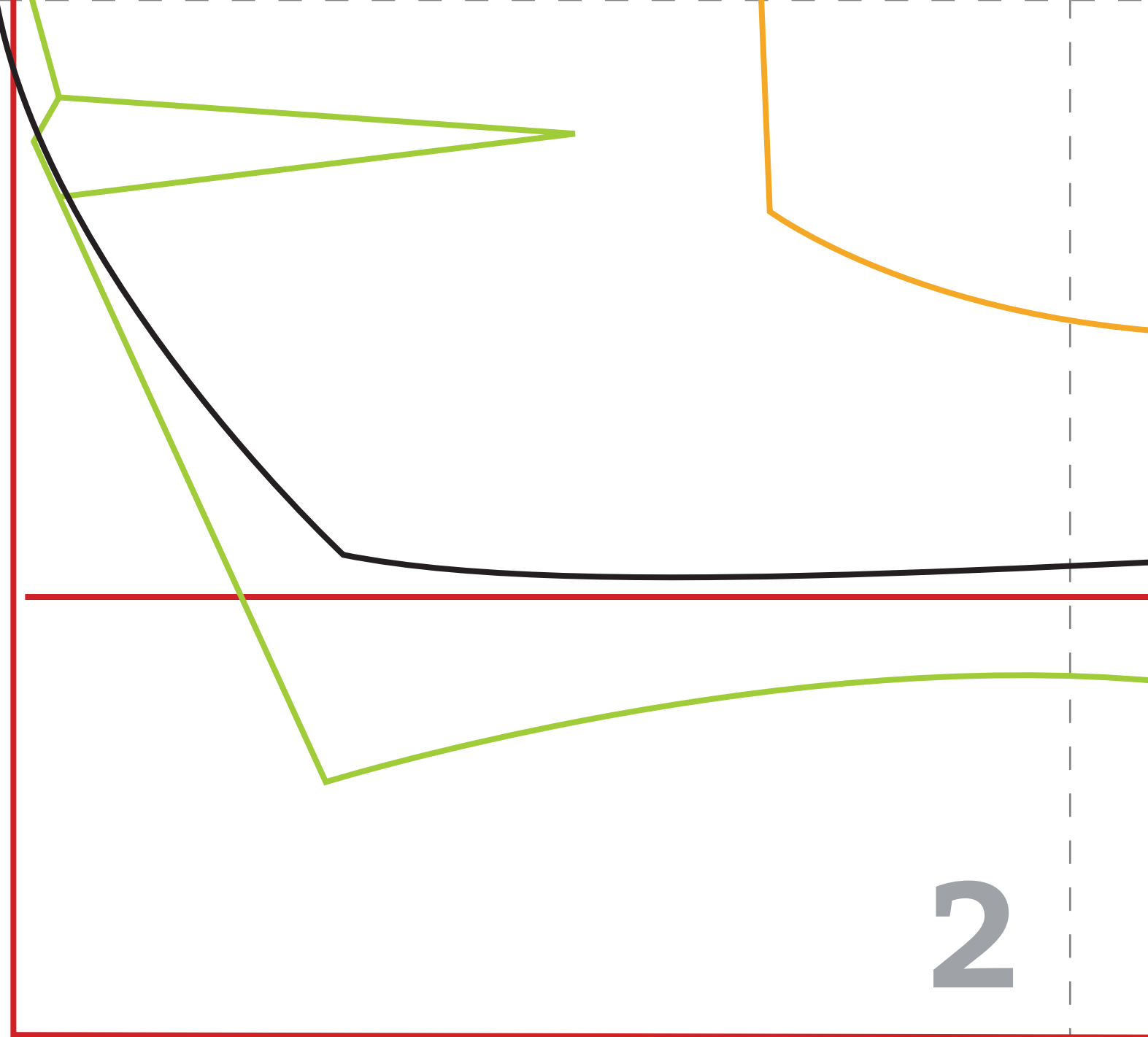
10cm

3 in

-  Vorderteil (2x)
-  Rückenteil (2x)
-  Unterärmel (2x)
-  Oberärmel (2x)
-  Kragen (2x im SB)

1





2

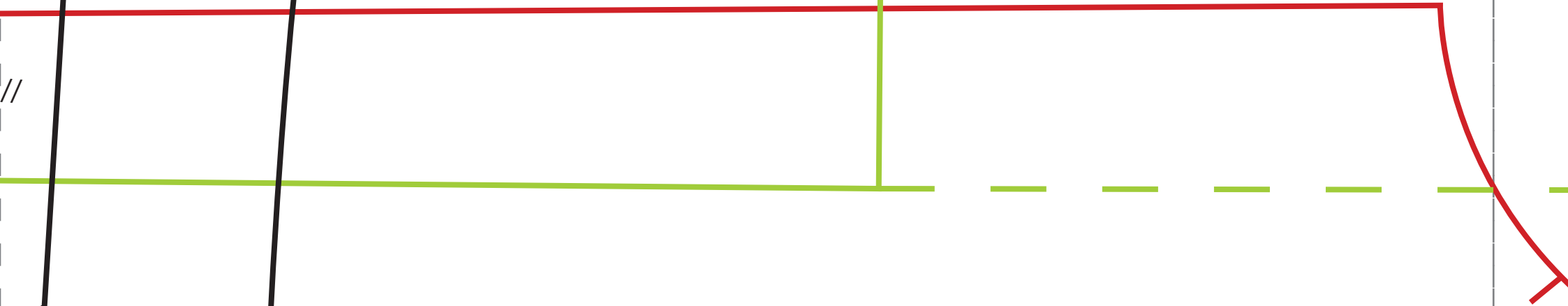
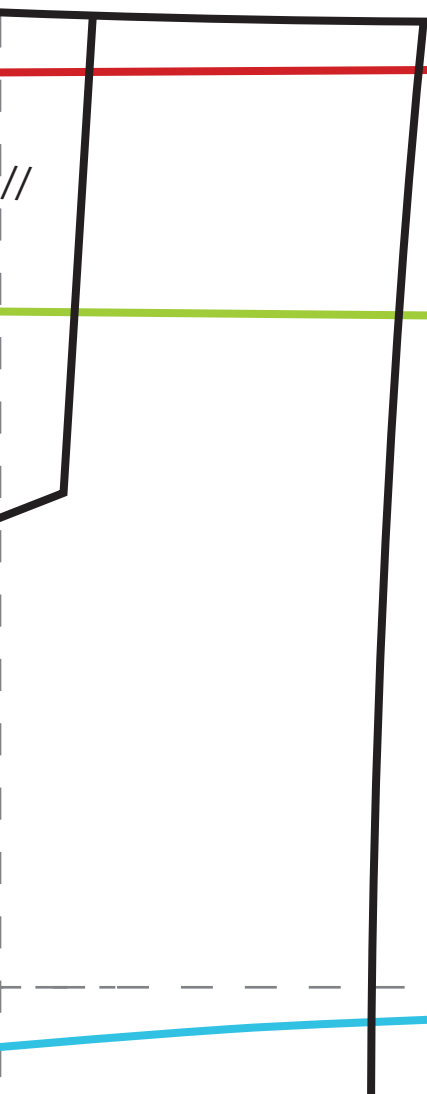
Riegel gelber Mantel //
bar yellow coat

Gelber Mantel // yellow coat

3

// fold





5

